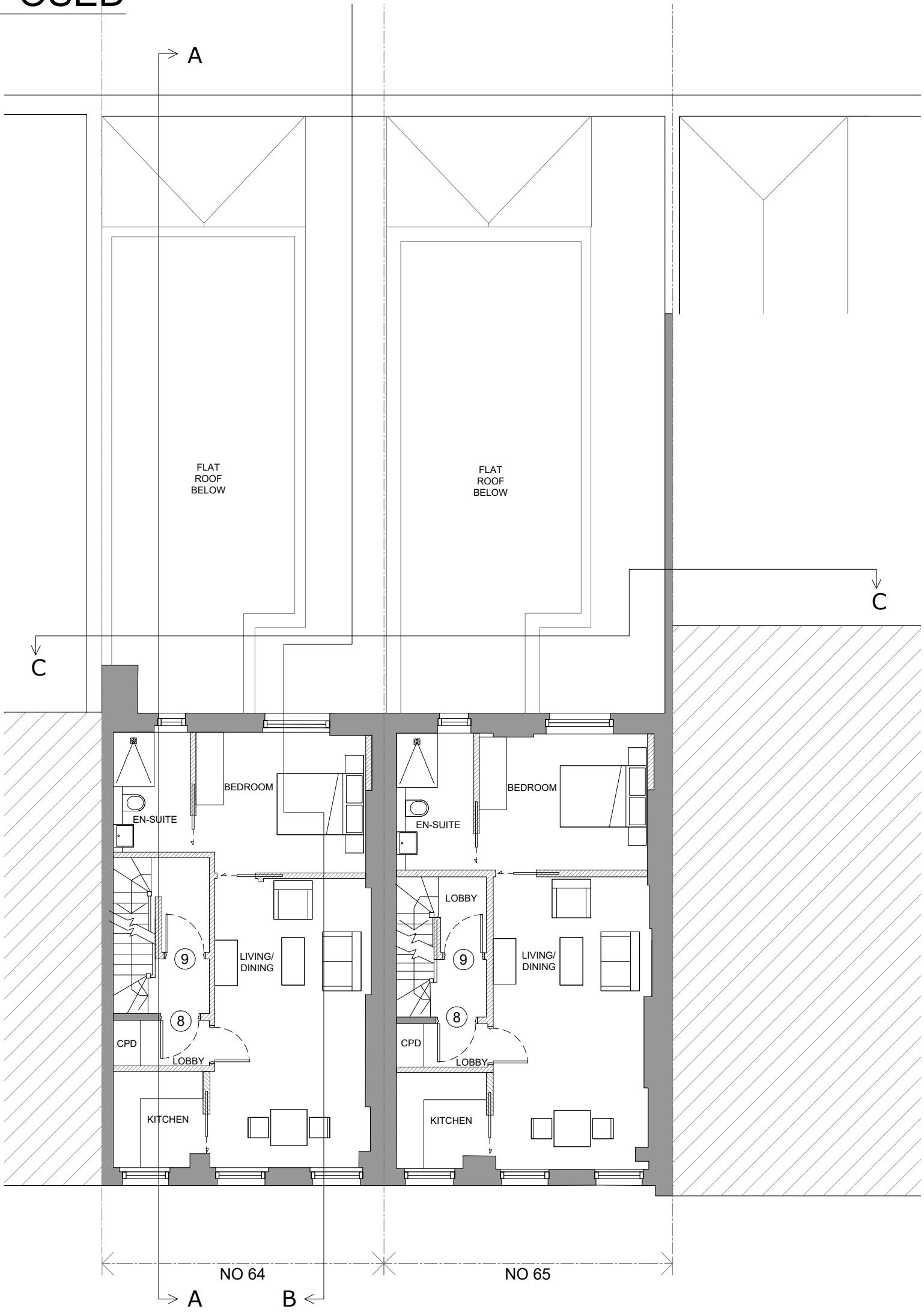
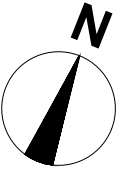


PROPOSED



1 THIRD FLOOR PLAN
Scale: 1:50 @ A1



- 03. 11.08.2018 RMW
Adjust unit layouts and sizes to satisfy
minimum space standards
Revised for planning
- 02. 17.01.2018 RMW
Issue for Planning
- 01. 26.10.2017 RMW
Revised layouts to maintain retention of
original walls and room layouts.
Original walls and room layouts.
Add front calling

00. ISSUED FOR COMMENT 05.07.17 PSZ
rev amendments date by

architects

ipa

55 Kingstown Street
London NW1 8JP
T +44 (0) 20 7436 1133
W ipa-architects.com

Project
64-65 GULLFORD STREET
LONDON
WC1N 1DD

Drawing Title
PROPOSED
THIRD FLOOR PLAN

Drawing Status
PLANNING

Date 06.07.2017 Drawn by PSZ
Scale A1 @ 1:50 A3 @ 1:100
Drawing No 16G4.L.O.1303 Rev
Cod File 16G4.L.O.1303 (3RD)
© PA Architects. All rights reserved.