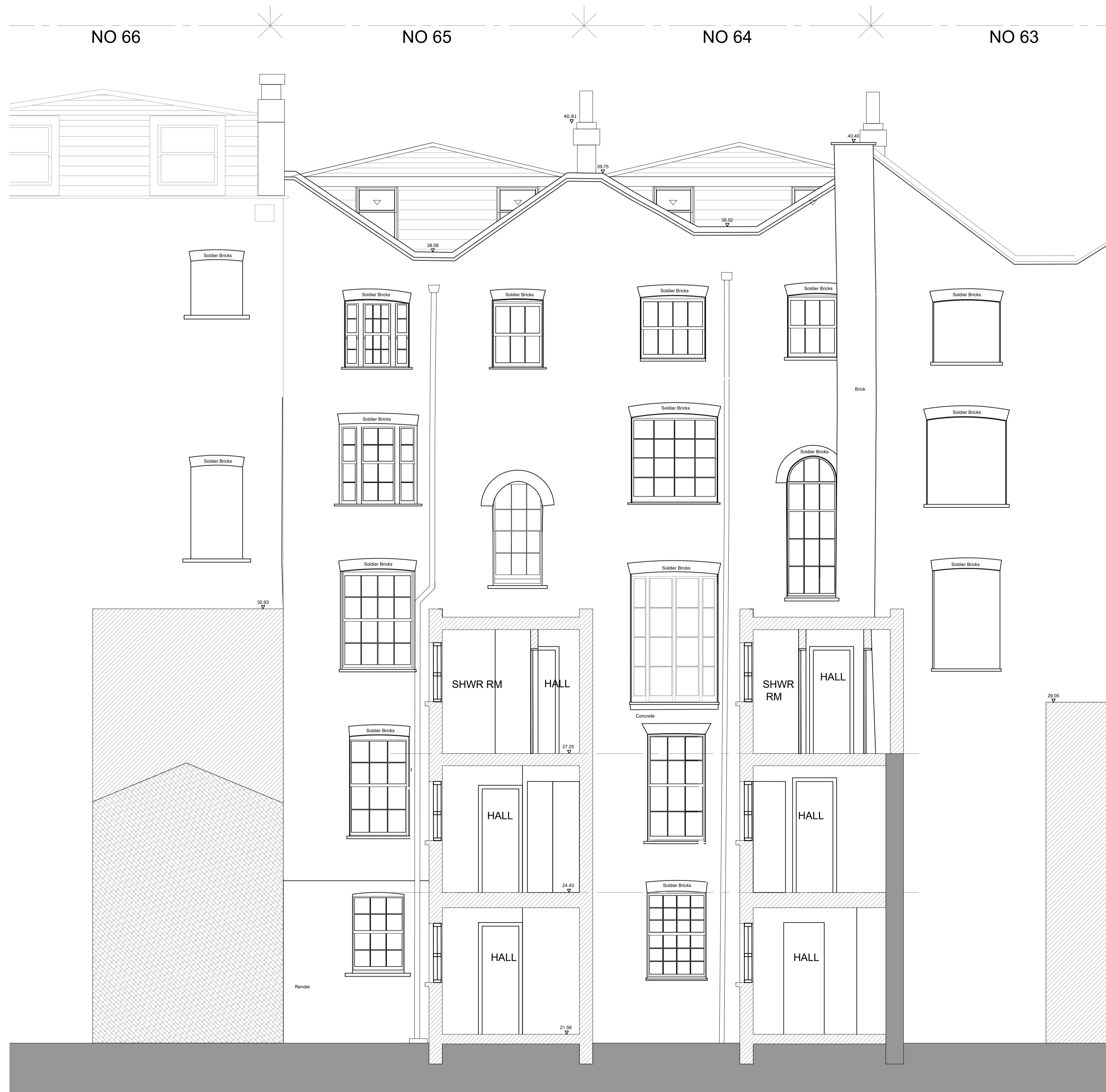


PROPOSED

This drawing must not be reproduced without permission.
Do not scale from drawing.
Contractor to check all dimensions on site.
Report discrepancies to the architect.

GENERAL NOTES

- Text



1 SECTION -CC- REAR ELEVATION
Scale: 1:50 @ A1



03	11.05.2018RvW	Adjust unit layouts and sizes to satisfy minimum space standards Re-issue for planning
02	17.01.2018 RvW	Issue for Planning
01	25.10.2017 RvW	Revise layouts to maximise retention of original walls and room layouts. Omit demolition lines Add front railing
00	05.07.17 PSZ	ISSUED FOR COMMENT
rev	amendments	date by

architects
ipa
55 Kingstown Street
London NW1 8JP
T + 44 (0) 20 7436 1133
W ipa-architects.com

Project
64-65 GUILDFORD STREET
LONDON
WC1N 1DD

Drawing Title
SECTION -CC-
REAR ELEVATION

Drawing Status	
PLANNING	
Date	Drawn by
07.07.2017	PSZ
Scale	
A1 @ 1:50	A3 @ 1:100
Drawing No.	Rev
16G4.LO.1308	03
Cad File	
16G4.LO.1306_00	
© IPA Architects: All rights reserved.	