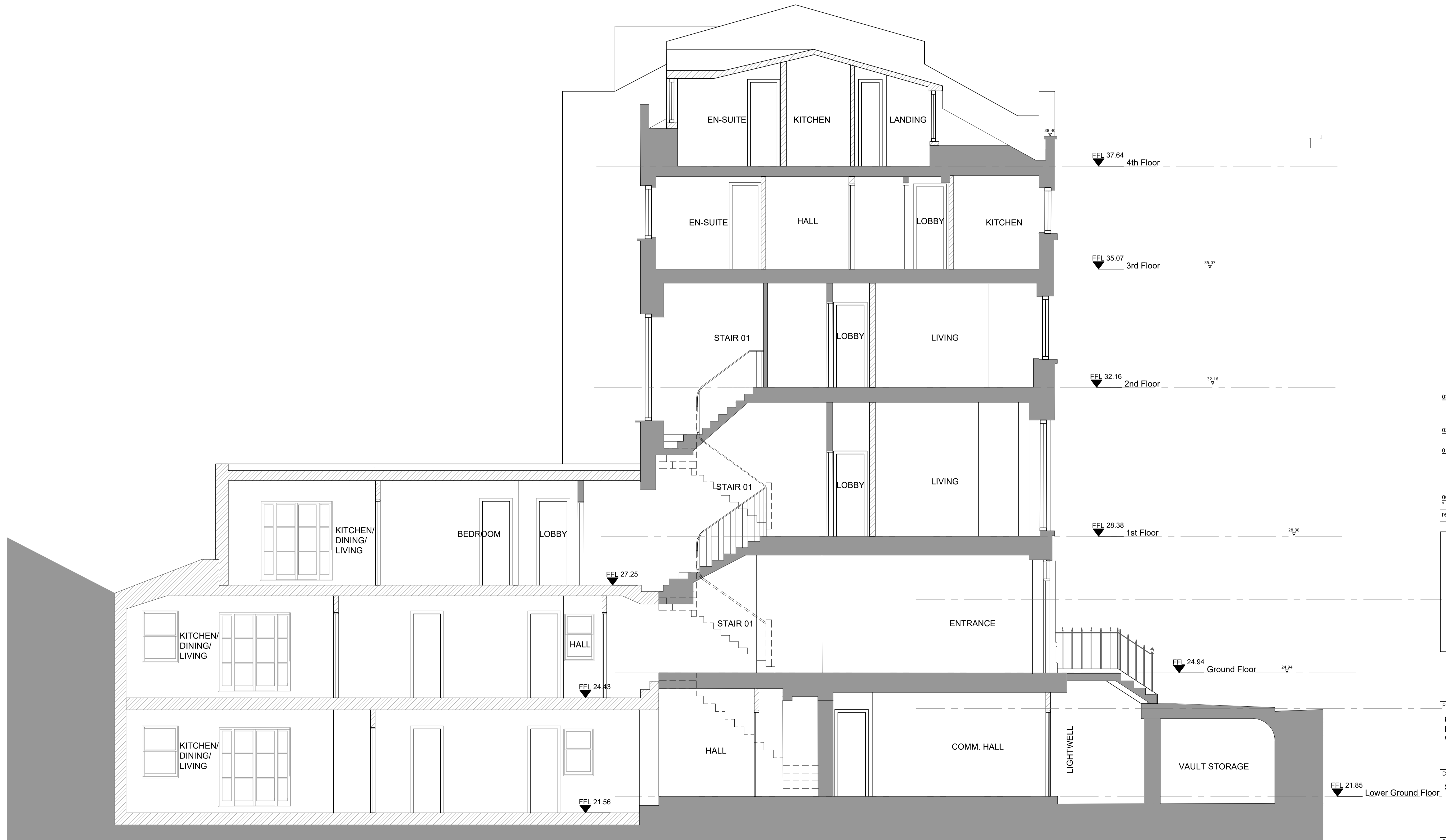


PROPOSED

This drawing must not be reproduced without permission.
Do not scale from drawing.
Contractor to check all dimensions on site.
Report discrepancies to the architect.

GENERAL NOTES

- Text



03	11.05.2018	RvW	Adjust unit layouts and sizes to satisfy minimum space standards Re-issue for planning
02	17.01.2018	RvW	Issue for Planning
01	25.10.2017	RvW	Revise layouts to maximise retention of original walls and room layouts. Omit demolition lines Add front railing
00	05.07.17	PSZ	ISSUED FOR COMMENT
rev	amendments	date	by

architects

ipa

55 Kingstown Street
London NW1 8JP
T + 44 (0) 20 7436 1133
W ipa-architects.com

Project
64-65 GUILDFORD STREET
LONDON
WC1N 1DD

Drawing Title
SECTION -AA-

Drawing Status

PLANNING

Date	07.07.2017	Drawn by	PSZ
Scale	A1 @ 1:50	A3 @ 1:100	
Drawing No.	16G4.LO.1306	Rev	03
Cad File	16G4.LO.1306_00		
© IPA Architects: All rights reserved.			

1 SECTION -AA-
Scale: 1:50 @ A1

