

This is the windows specification of the property in 82 Compayne Gardens, NW6 3RU for the discharge the condition 4a of the 2017/4519/P planning permission for the above property and the associated 2018/2651/P Non-Material Amendment Application.

The existing windows of the application are timber framed with single glazing. All windows were identified to be beyond repair and are proposed to be replaced with like-for like timber windows but with 18mm double glazing. The new windows will follow the design of the existing ones, again with 18mm double glazing.

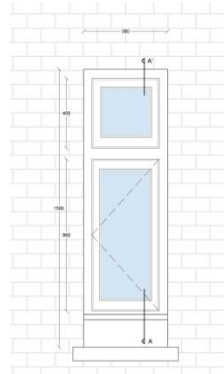
The proposal for the addition of 18mm double glazing is made in order to deliver a fully efficient unit in terms of energy consumption as stated in the Design and Access Statement of the main planning application (2017/4519/P), effectively following what has been recently approved for the neighbouring building in No28 Compayne Gardens, a building of similar character, age and with same type of windows (ref. No 2017/6593/P).

Specification for windows:

- Hardwood
- Frame colour to match the existing windows
- 14 mm double glazed argon sealed units
- Soft coat low E glass to comply with regulations
- Toughened safety glass where required by building regulations
- Glazing bars where specified
- All windows to have restrictors
- No head lining, jamb lining and trim

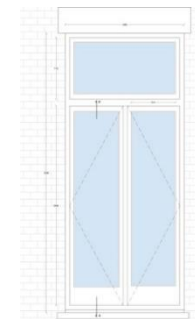
The appended window schedule relates to the following types of windows and numbering.

WINDOW TYPES



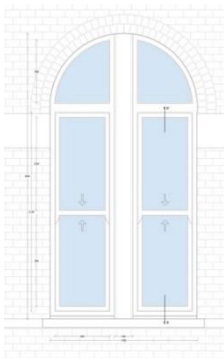
Type A: Casement Window with top light.

- Variation 1: Double casement with top lights.
- Variation 2: Casement window no top light.
- Variation 3: Double casement window no top light.
- Variation 4: Casement window with top glazing bars

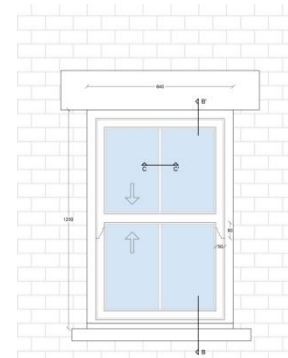


Type B: Double doors with top light

- Variation 1: Double doors no top light

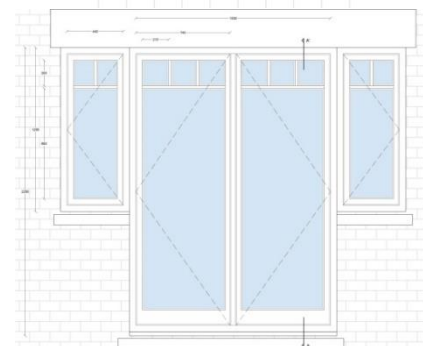


Type C: Double sash window with arched top light



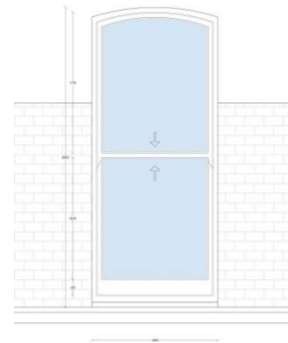
Type D: Sash window and glazing bar.

- Variation 1: Sash window no glazing bar.
- Variation 2: Sash window with vertical and horizontal glazing bar.



Type E: Double doors and side lights with glazing bars.

- Variation 1: Double doors with glazing bars no side lights.



Type F: Sash with arched top light

Please note the below drawings are not in scale



Figure 1. Front Elevation



Figure 2. East Elevation



Figure 3. Rear Elevation



Figure 4. West Elevation