

11 FORTRESS GROVE, NW5 2HD
 PROPOSED RAILINGS & DOUBLE-GLAZED TIMBER-FRAMED SASH WINDOWS

Revision 4: 25 June 2018

New timber-framed sash windows to front elevation to match existing
 All windows share the same section

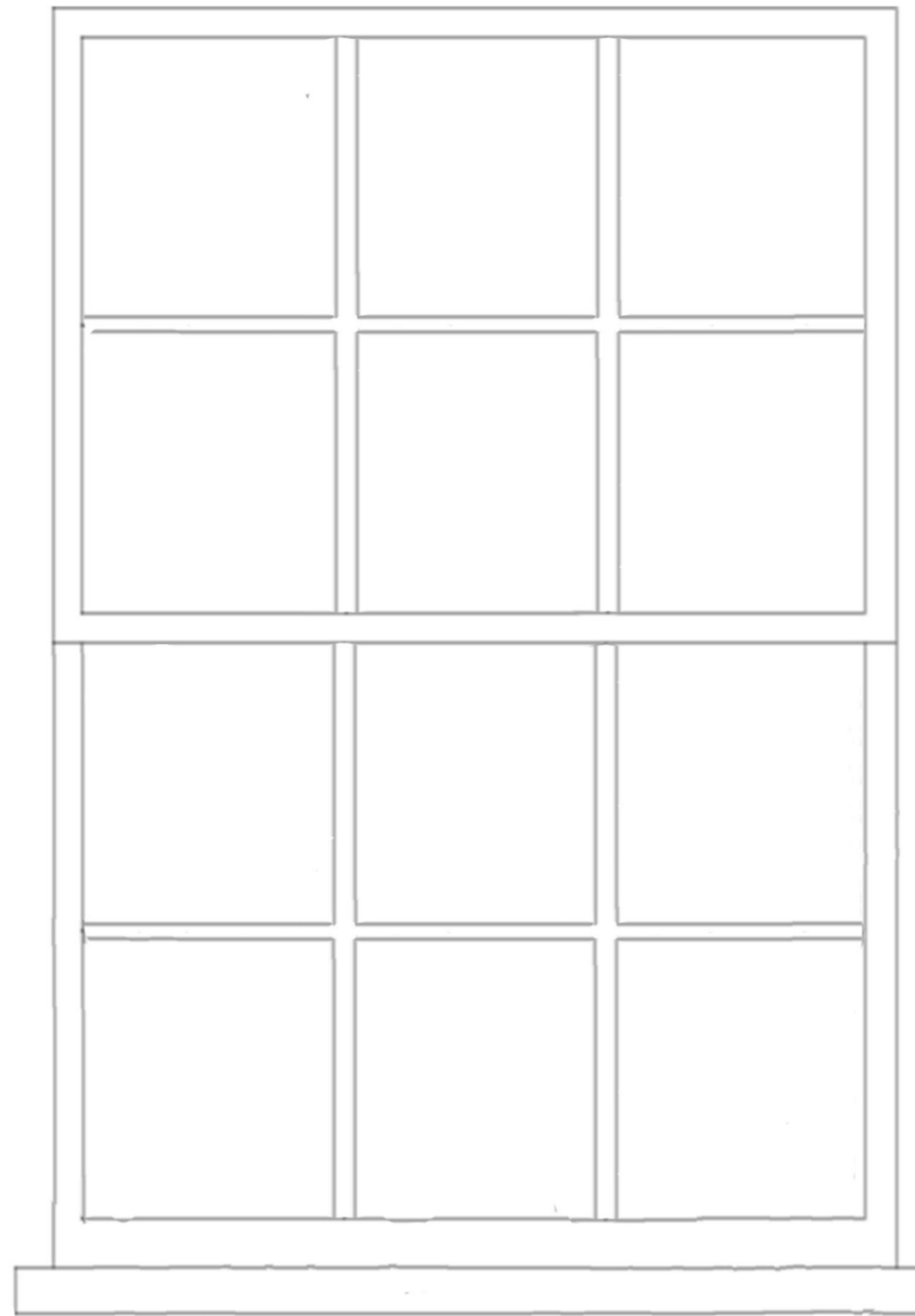
Height including sill 170cm (approx scale 1:9)

Proposed black-painted metal gate and railings to match design and height of existing railings of Nos 16, 15, 14

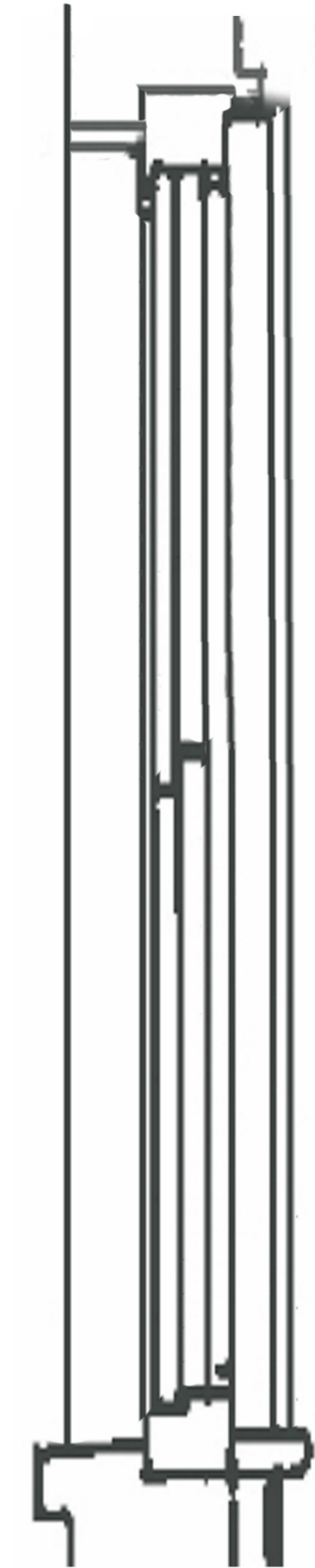
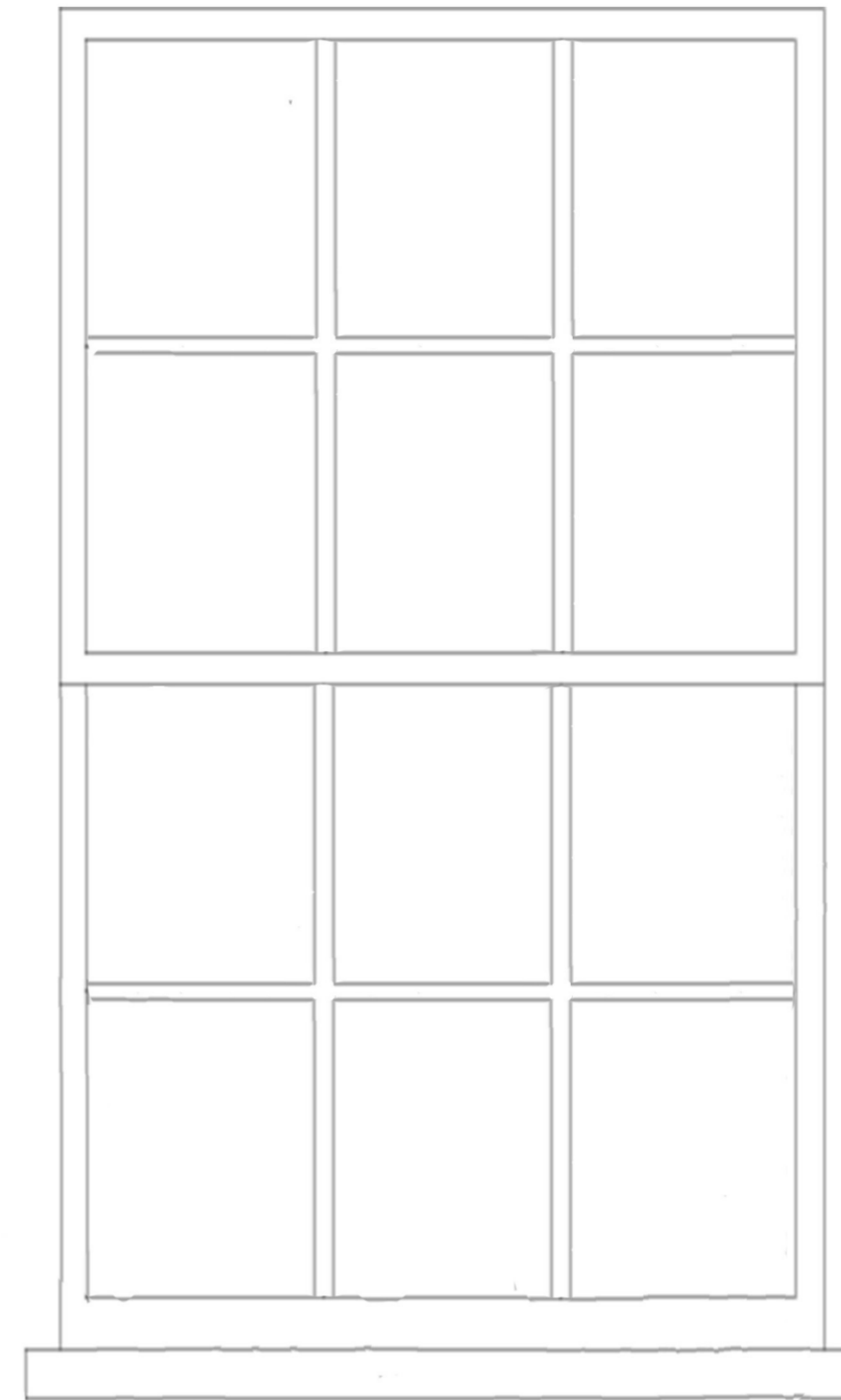
House nos 12 and 13 have permission to build the same railings

Height 146cm (approx scale 1:10)

Front elevation: Windows 1 (ground floor)



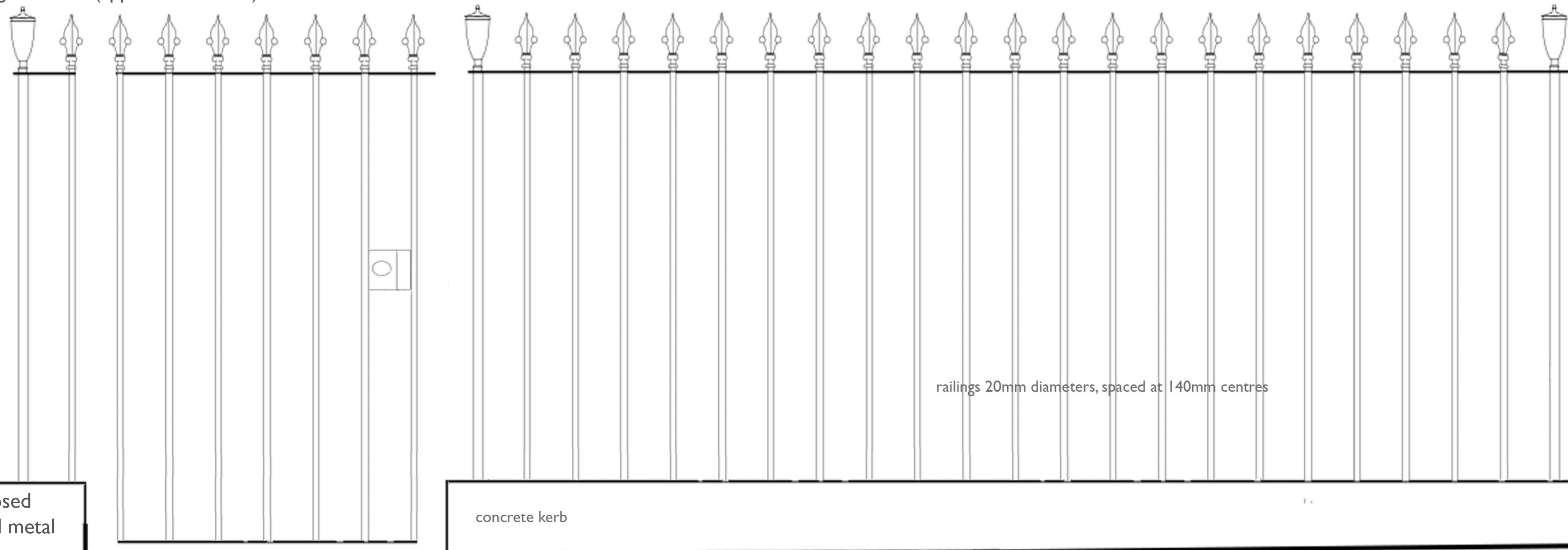
Front elevation: Windows 2 and 3 (first floor)



DETAIL SECTION

Front elevation windows

section
 new double-glazed sash window
 timber-framed to match existing fenestration and profile



railings 20mm diameters, spaced at 140mm centres

concrete kerb

existing wall

No 12 proposed black-painted metal railings

for which planning permission has been granted