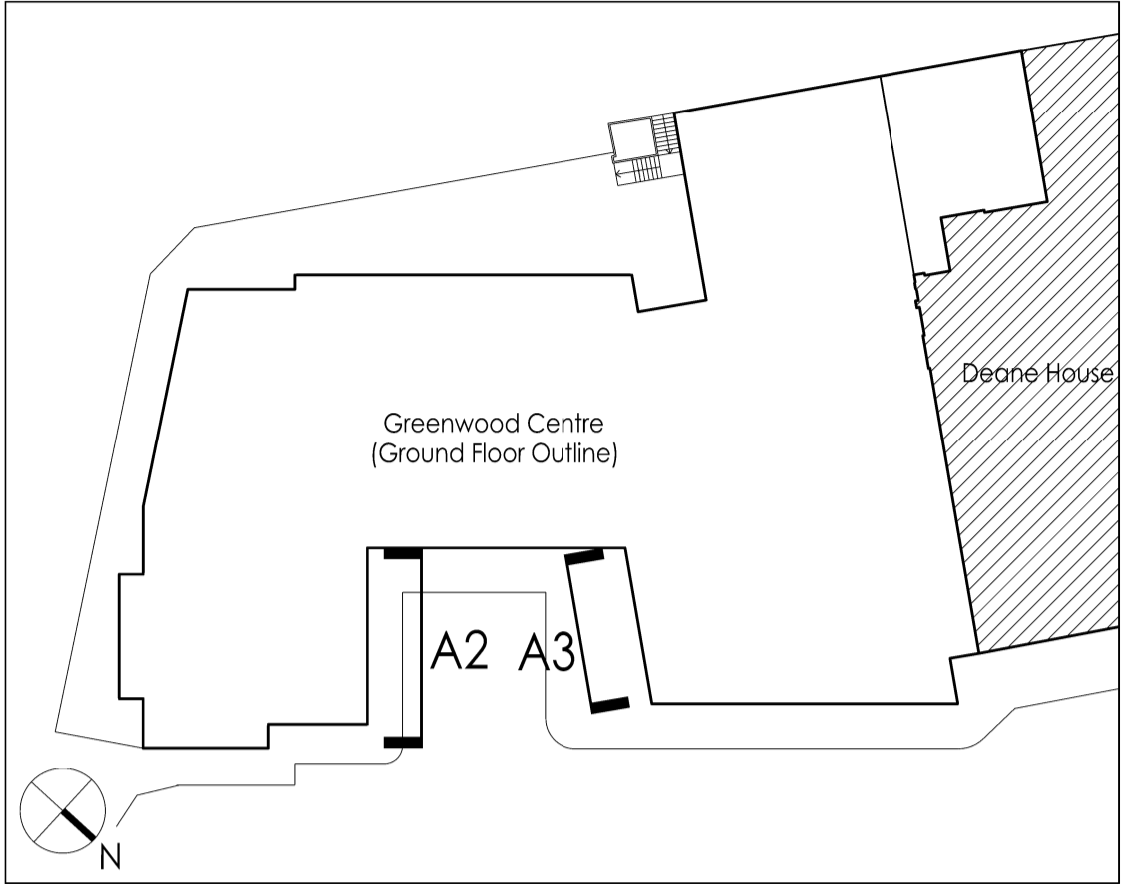


GENERAL NOTES
 DO NOT SCALE FROM THIS DRAWING.
 DIMENSIONS ARE GIVEN TO STRUCTURE UNLESS INDICATED OTHERWISE.
 DIMENSIONS TO BE CHECKED ON SITE PRIOR TO COMMENCEMENT OF WORK.
 DRAWINGS TO BE READ IN CONJUNCTION WITH ALL OTHER ARCHITECTURAL DRAWINGS, CONDITIONS AND SPECIALIST DRAWINGS, CONSTRUCTION NOTES, SPECIFICATIONS AND EMPLOYER'S REQUIREMENTS WHERE APPLICABLE.
 ANY DISCREPANCY MUST BE BROUGHT TO THE ATTENTION OF PKCO, IF IN DOUBT, ASK.
 ANY MODIFICATION TO THIS DRAWING MUST BE CARRIED OUT BY PKCO.
 THIS DRAWING REMAINS UNDER THE COPYRIGHT OF PKCO ARCHITECTS LIMITED. PLEASE OBTAIN PERMISSION BEFORE COPYING.
 THESE DETAILS OF CONSTRUCTION REPRESENT THE BEST PRACTICE DESIGN AND ELEMENTS OF FRAMEWORKS, STRUCTURES, SERVICES, UTILITIES, MECHANICAL, ELECTRICAL AND PLUMBING (M&E) ELEMENTS ARE SHOWN FOR INFORMATION ONLY. ALL ELEMENTS OF STRUCTURE REFER TO STRUCTURAL DRAWINGS AND SPECIFICATIONS. ALL MECHANICAL, ELECTRICAL AND PLUMBING (M&E) ELEMENTS ARE SHOWN FOR INFORMATION ONLY. ALL MECHANICAL, ELECTRICAL AND PLUMBING (M&E) ELEMENTS ARE SHOWN FOR INFORMATION ONLY. ALL MECHANICAL, ELECTRICAL AND PLUMBING (M&E) ELEMENTS ARE SHOWN FOR INFORMATION ONLY.



1:500 Plan

NOTES
 MOVEMENT JOINTS SHOWN FOR CO-ORDINATION PURPOSE ONLY. ALL MOVEMENT JOINTS TO S.E. DETAIL DESIGN & SPECIFICATION.
 M+E EXTRACT POSITIONS TBC BY M+E ENGINEER

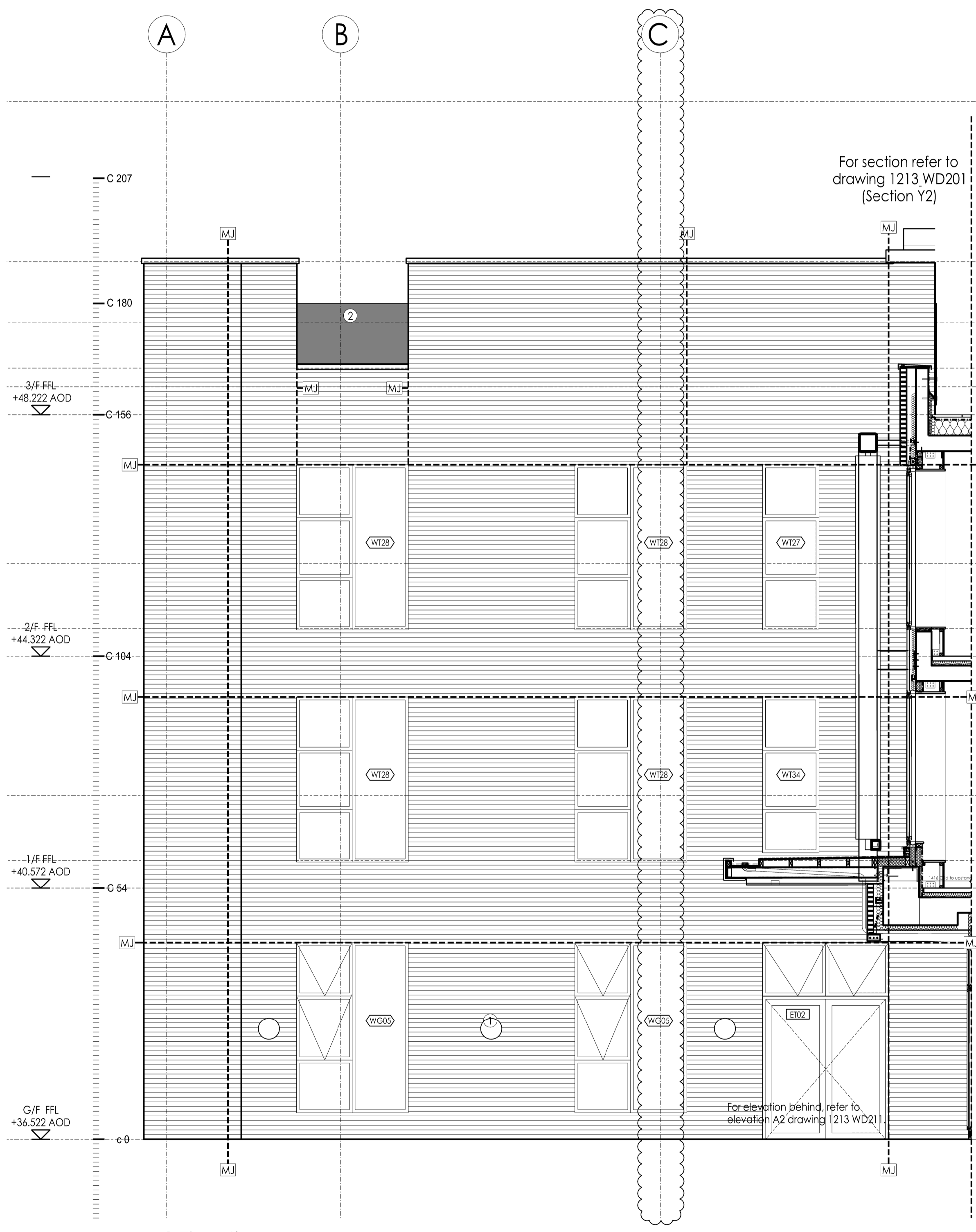
KEY

MATERIALS

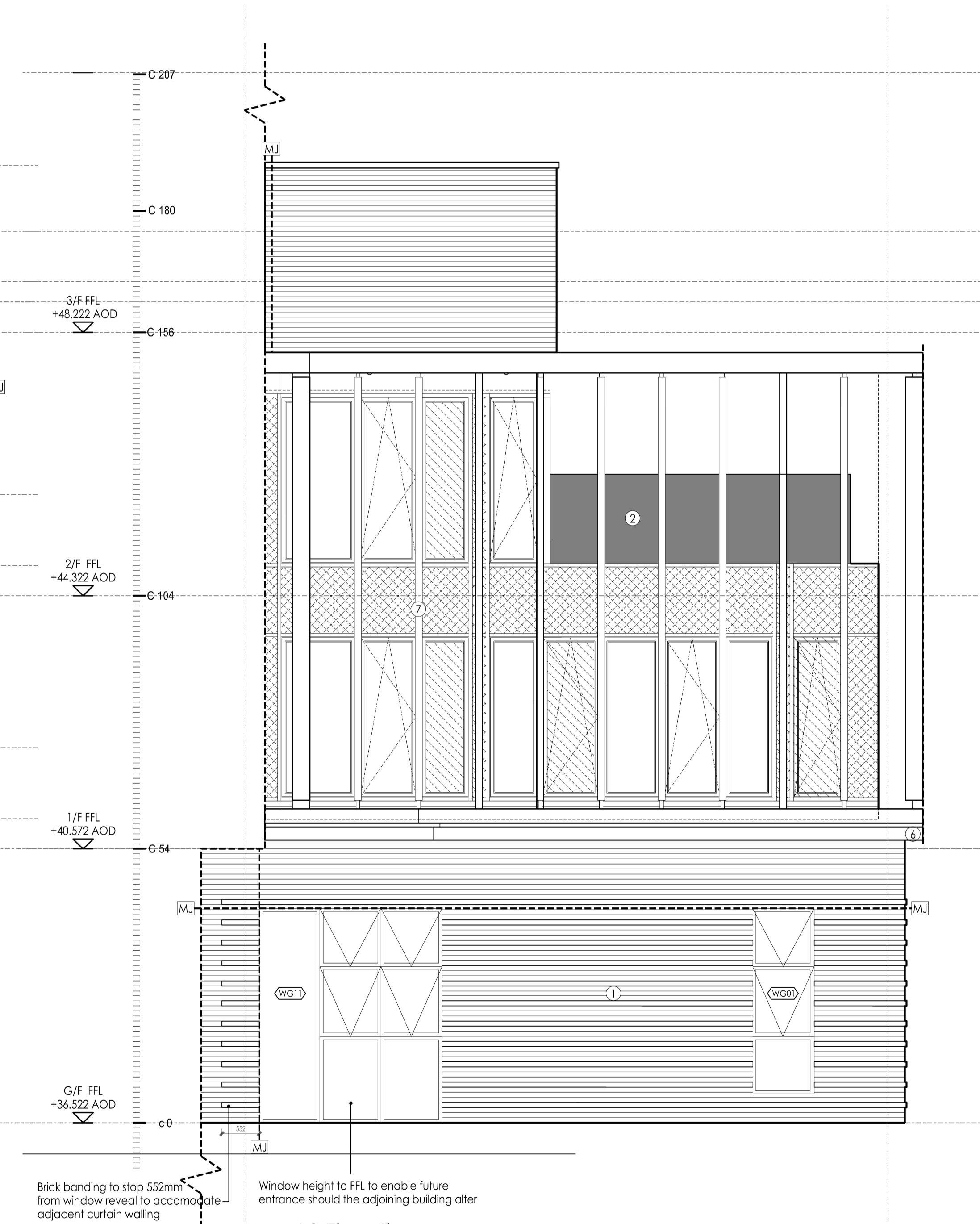
1. Brick
2. Terrace Glazing
3. Timber Pergola
4. Roof Light
5. Metal Trimmed Roof
6. Canopy
7. Metal Fins
8. Recessed Brickwork
9. To Landscape Architects details

ET 01 Door Ref.
WT 01 Window Ref.
MJ Movement joints
 Detail REF.
 Extract/Intake/Ventilation
S8 Sparrow Box: 1SP Schwegler Sparrow Terrace
B8 Bat Box: Ibslock Enclosed Bat Box 'C' 215 x 290 mm Large Cream

For windows pattern type drawing refer to: 1213_WD530
 For curtain wall schedule refer to: 1213_WD533
 For Materials and finishes refer to: 1213_WD 125, 126 + 127



A2 Elevation



A3 Elevation

DATE	REV	DESCRIPTION	BY	CHECKED
10.11.2017	G	C gridline added to elevation A2.	JF	PH
19.10.2017	F	Window positions/movement joint on elevation A2 amended to suit site position.	JF	PH
02.09.2017	E	Brick banding on ground floor elev A3 stopped short of CW to allow for CW detail.	RS	PH
23.03.2017	D	KCL comment addressed as clarified.	AL	PH
10.03.2017	C	Movement joints added. Note revised to detail. Window & door heights revised. Ground floor window & door on A3 elevation raised movement to align with revised part Section A2 updated: section added and full floor window amended.	JF	RS
13.01.2017	B	Value Engineering design amendment: brick above from detail. Window header detail amended, omitting brick on edge. Parapets revised: brick on edge replaced with aluminium parapets. Window openings revised.	JF	RS
19.05.2016	A	Window tapes revised.	JF	PH
01.04.2016	J	First issue for comment.	JF	PH

PKCO
 an HR company
 5 - 8 HARDWICK STREET
 LONDON EC1R 4RG
 TEL: 020 - 7372 - 8918
 www.pkco.co.uk

ARCHITECTS INTERIOR DESIGNERS
 MASTER PLANNERS URBAN DESIGNERS

CLIENT	Kier Group
PROJECT	Greenwood Centre
DRAWING TITLE	Elevation A2 & A3
STATUS	CONSTRUCTION
SCALE	1:50@A1
DATE	2016.03
DRAWING NO.	1213_WD_211
DRAWN BY	JF
CHECKED BY	PH
REVISION	G