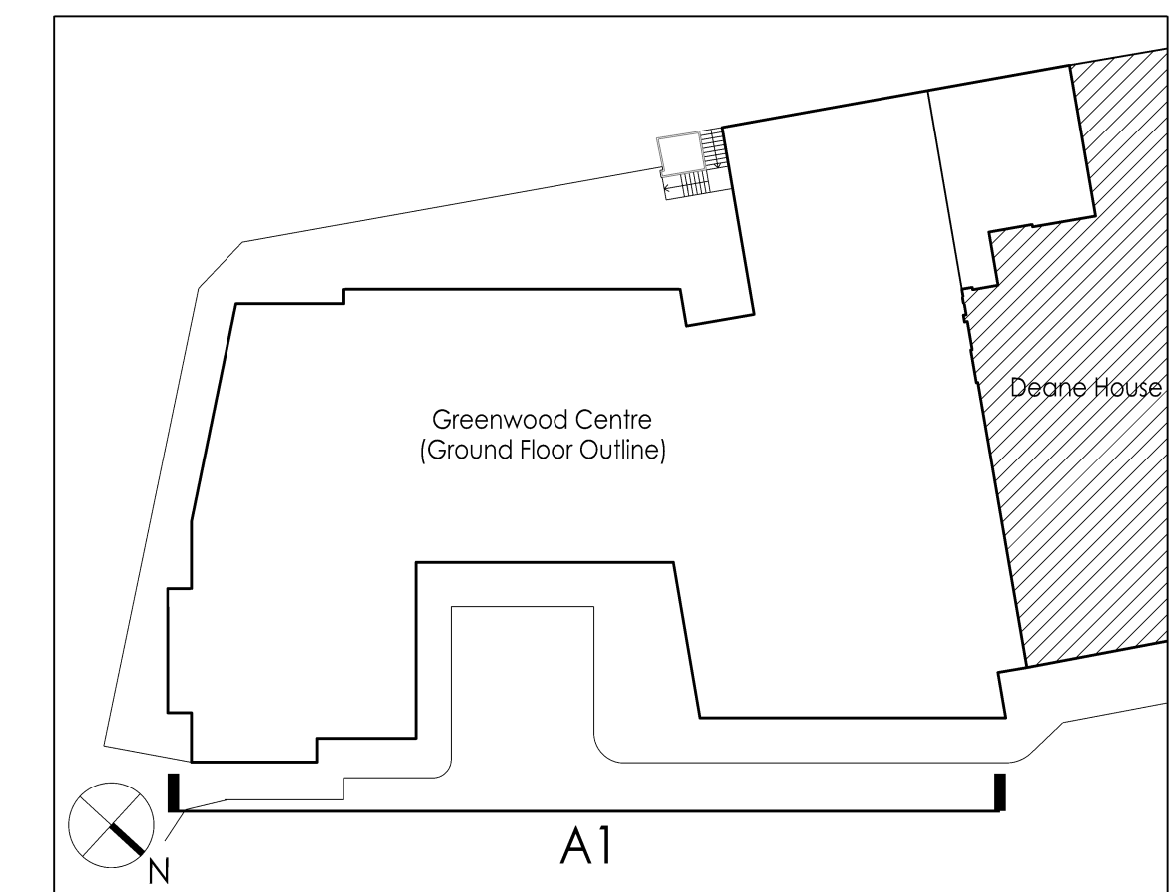


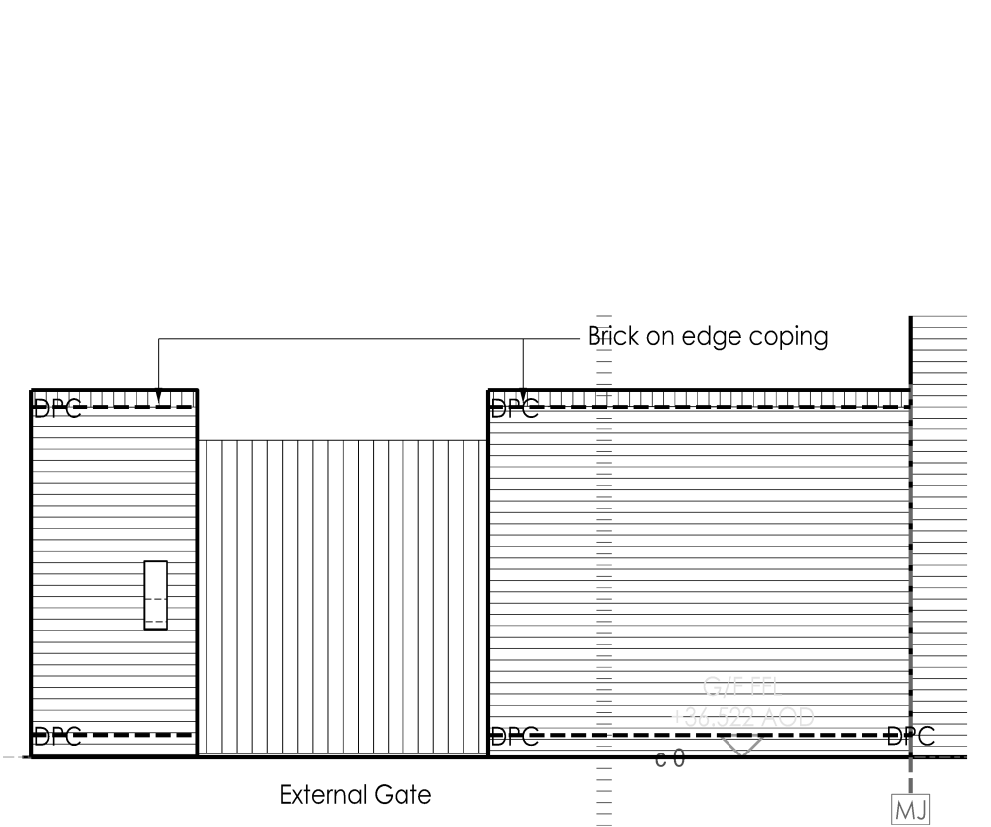
**GENERAL NOTES**  
 1. All work shall be in accordance with the relevant British Standards and specifications.  
 2. The Contractor shall be responsible for obtaining all necessary consents and approvals.  
 3. The Contractor shall be responsible for the safety and security of the site.  
 4. The Contractor shall be responsible for the protection of existing structures and services.  
 5. The Contractor shall be responsible for the disposal of all waste materials.  
 6. The Contractor shall be responsible for the completion of all work within the agreed programme of works.  
 7. The Contractor shall be responsible for the maintenance of all access roads and services.  
 8. The Contractor shall be responsible for the provision of all necessary site facilities.  
 9. The Contractor shall be responsible for the provision of all necessary site security.



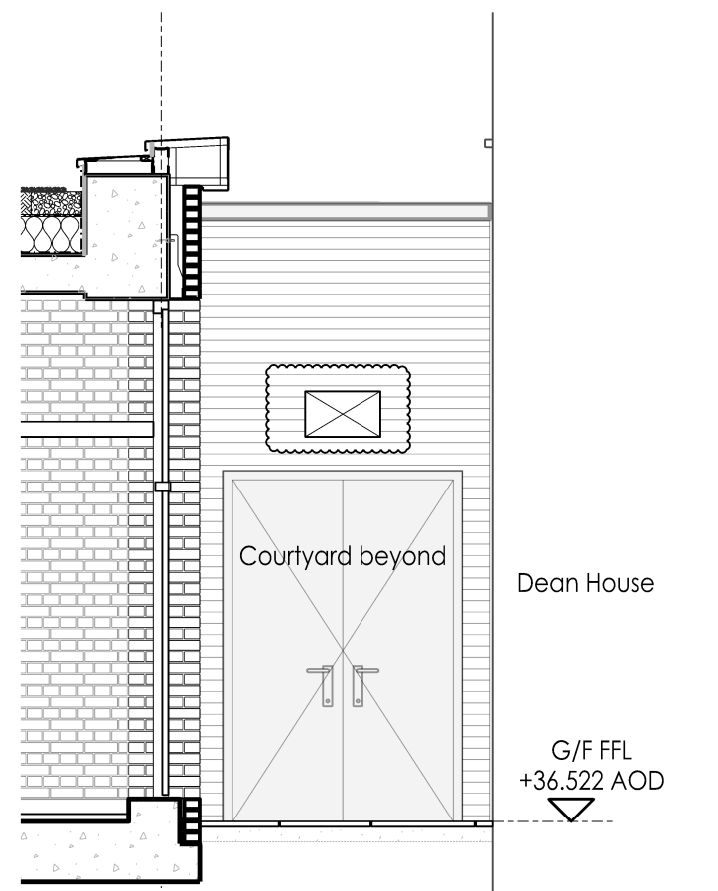
1:500 Plan



A1 Elevation



External Gate Elevation:  
Refer to drawing 1213\_WD 705



Courtyard Gate Elevation:

KEY	
<b>MATERIALS</b>	
1. Brick	See specification of material requirements.
2. Terrace Glazing	See specification of material requirements.
3. Timber Pergola	See specification of material requirements.
4. Roof Light	See specification of material requirements.
5. Metal Trimmed Roof	See specification of material requirements.
6. Canopy	See specification of material requirements.
7. Metal Fire	See specification of material requirements.
8. Recessed Brickwork	To Landscape Architects details.
9. To Landscape Architects details	

NOTES	
MOVEMENT JOINTS SHOWN FOR CO-ORDINATION PURPOSE ONLY. ALL MOVEMENT JOINTS TO S.E. DETAIL, DESIGN & SPECIFICATION.	
MHE EXTRACT POSITIONS TBC BY MHE ENGINEER.	

KEY	
DR	Door Ref.
WR	Window Ref.
MJ	Movement joints
DR	Detail Ref.
EV	Extract/Intake/Ventilation
SB	Sparrow Box: ISP Schwieger Sparrow Terrace
EB	Bat Box: batlock Enclosed Bat Box 'C' 215 x 290 mm Large Cream

MATERIALS		
07.02.001	See specification of material requirements.	PH
07.02.002	See specification of material requirements.	PH
07.02.003	See specification of material requirements.	PH
07.02.004	See specification of material requirements.	PH
07.02.005	See specification of material requirements.	PH
07.02.006	See specification of material requirements.	PH
07.02.007	See specification of material requirements.	PH
07.02.008	See specification of material requirements.	PH
07.02.009	See specification of material requirements.	PH
07.02.010	See specification of material requirements.	PH
07.02.011	See specification of material requirements.	PH
07.02.012	See specification of material requirements.	PH
07.02.013	See specification of material requirements.	PH
07.02.014	See specification of material requirements.	PH
07.02.015	See specification of material requirements.	PH
07.02.016	See specification of material requirements.	PH
07.02.017	See specification of material requirements.	PH
07.02.018	See specification of material requirements.	PH
07.02.019	See specification of material requirements.	PH
07.02.020	See specification of material requirements.	PH

NOTES	
For windows pattern type drawing refer to: 1213_WD530	
For curtain wall schedule refer to: 1213_WD533	
For Materials and finishes refer to: (TO BE CONFIRMED)	

KEY	
DR	Door Ref.
WR	Window Ref.
MJ	Movement joints
DR	Detail Ref.
EV	Extract/Intake/Ventilation
SB	Sparrow Box: ISP Schwieger Sparrow Terrace
EB	Bat Box: batlock Enclosed Bat Box 'C' 215 x 290 mm Large Cream

ARCHITECTS	
PCKO an AR company	
5 - 8 HAYDOCK STREET LONDON EC1R 4RS TEL: 020 7372 8918 www.pcko.co.uk	
ARCHITECTS MASTER PLANNERS INTERIOR DESIGNERS URBAN DESIGNERS	
CLIENT: Kier Group	
PROJECT: Greenwood Centre	
DRAWING TITLE: Elevation A1	
SCALE: 1:500 A0	
DATE: 2016/03	
DRAWING NO: 1213_WD_210	