

revision / date / amendments	
- / 02/02/18 /	- First Issue
A / 02/03/18 /	1. AHU + Attenuator for KOKO stage and auditorium shown indicatively.
	2. Indicative rigging/ space frame shown
	3. Dome levels updated to align with interior design stage 3 layout.
B / 23/03/18 /	1. Tender Addendum (1). Indication of 4 post truss fixed at stage level for integrated automatic retractable acoustic baffles and integrated lighting rig.
	2. Tender Addendum (2). New AHU + Attenuator over stage to be hung to existing relocated secondary beams in Flytower.
C / 01/06/18 /	Listed Building Application
	1. Indication of 4 post truss fixed at stage level for integrated automatic retractable acoustic baffles and integrated lighting rig.
	2. New AHU + Attenuator over stage to be hung to existing relocated secondary beams in Flytower.

Dome roof Level  
46.22

Rooftop Pavilion Level  
41.55

Roof Level  
39.25

Fourth Floor Terrace  
36.15

Third Floor  
32.71

Second Floor  
29.80

First Floor  
26.55

Ground Floor  
22.60

Basement Floor  
19.55

01.06.18

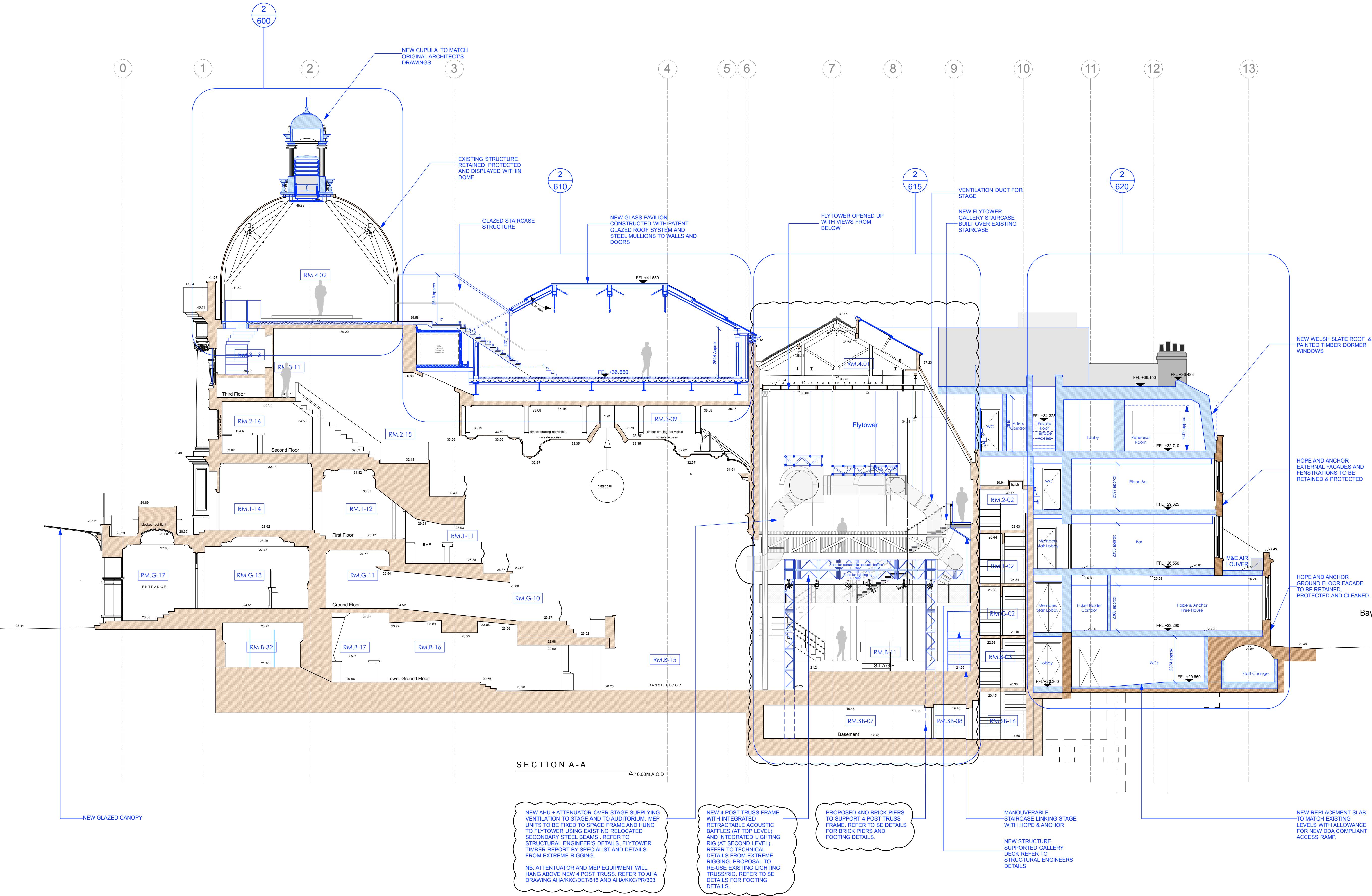
0 1 2 3 4 5 8m

STAGE 4

Archer Humphries Architects

Basement  
Central House  
142 Central Street  
London, United Kingdom  
EC1V 8AR  
T: +44 (0) 20 7251 8555

project title KOKO + Hope & Anchor + Bayham Place Camden, London	
drawing title Proposed Section AA	scale 1:100 @ A1
drawing number AHA/ KKC / PR /300	date 18.05.17
	drawn EH/FR
	checked FR/PC
	revision C



SECTION A-A  
16.00m A.O.D