

© copyright

Copyright of this drawing is retained by Arena Property Services Ltd. Any discrepancies between this drawing and any other information should be reported to Arena Property Services Ltd.

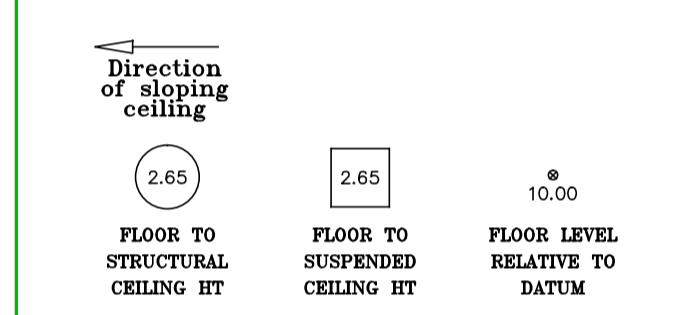
Drawing Naming Convention:

Job No\Code\Dwg Type\Location\Ref
 Code: 13 = Existing 14 = Proposed
 Dwg Type: B = Building E = Elevation
 S = Section T = Topographical
 Location: B = Basement C = Ceiling Plan
 E = External F = Front
 G = Ground S = Side
 1 = First Re = Rear
 R = Roof GA = General Layout
 M = Mezzanine AA = Section A-A
 Ref Ref to individual dwg I.D. (e.g. Revision)

Standard Abbreviations (where applicable):

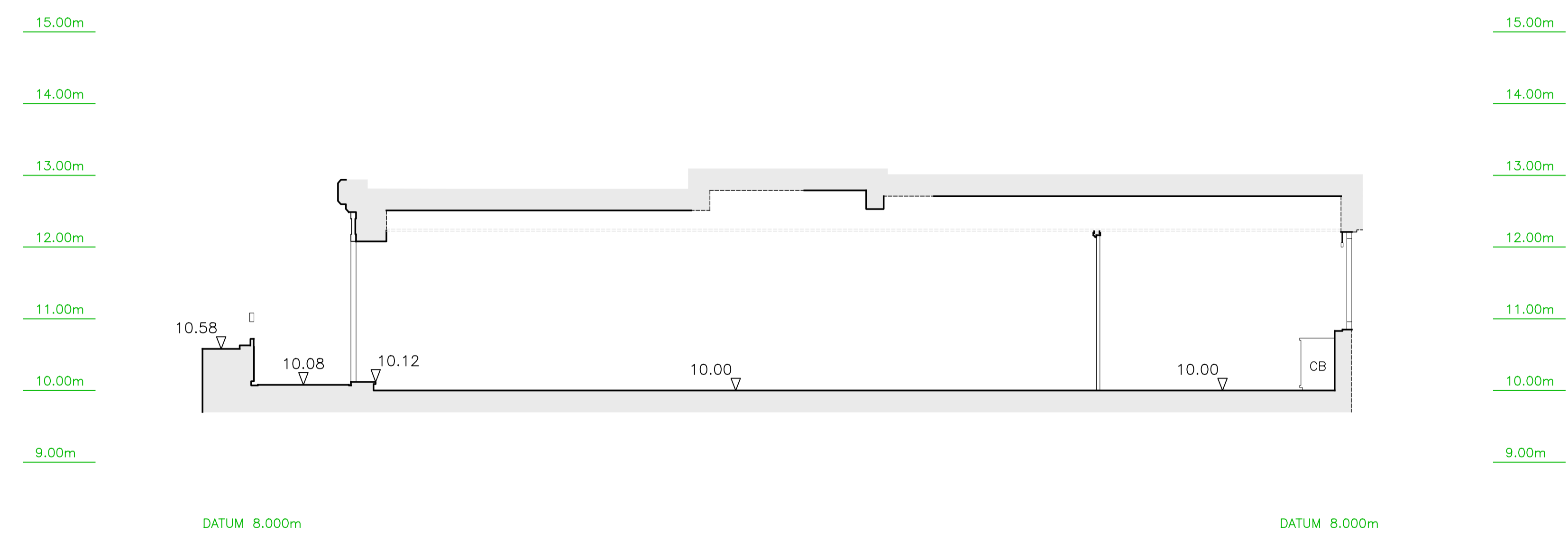
| Building Survey | | Land Survey | |
|-----------------|-----------------------|-------------|---------------------|
| AB | AIR BRICK | B | ROLLARD |
| ACU | AIR CONDITIONING UNIT | BB | BELLSHA BEACON |
| AH | ACCESS HATCH | BS | BUS STOP |
| AP | ACCESS PANEL | BSB | BUS SHELTER |
| AV | AIR VALVE | BT | B.T. COVER |
| BH | BEAM HT | CAM | CAMERA |
| BR | BOILER | CATV | CABLE TV COVER |
| BSL | BEAM SOFFIT LEVEL | CL | COVER LEVEL |
| CB | CUPBOARD | ELEC | ELECTRIC COVER |
| CC | CEILING CHANGE | EP | ELECTRIC POLE |
| CH | CHUBB INTERNAL HT | ER | EARTH ROD |
| C-A | CILL TO APEX HT | FP | FLAG POLE |
| C-H | CILL TO HEAD HT | FW | FOUL WATER |
| C-S | CILL TO SPRING HT | GU | GULLY |
| DB | DOOR BASE HT | GV | GAS VALVE |
| DH | DOOR HEAD HT | HYD | PIPE HYDRANT |
| DR | DRAIN | IB | ILLUMINATED BOLLARD |
| EXP | EXTRACTOR FAN | IC | INSPECTION COVER |
| FA | FIRE ALARM | IL | INVERT LEVEL |
| F-A | FLOOR TO APEX HT | LP | LAMP POST |
| F-C | FLOOR TO CILL HT | MH | MANHOLE |
| F-H | FLOOR TO HEAD HT | MKR | MARKER POST |
| F-S | FLOOR TO SPRING HT | P | POST |
| GEA | GROSS EXTERNAL AREA | PM | PARKING METER |
| GIA | GROSS INTERNAL AREA | PI | PIPE |
| GU | GULLY | PLI | PAVEMENT LIGHT |
| HT | HEATER | RO | RODDING EYE |
| HW | HOT WATER TANK | RS | ROAD SIGN |
| NIA | NET INTERNAL AREA | RWP | RAIN WATER PIPE |
| NTS | NOT TO SCALE | SA | SITE AREA |
| RAD | RADIATOR | SB | SIGN BOARD |
| RE | RECESS HEAD HEIGHT | SI | SIGN |
| RFV | RAISED FLOOR VOID | SL | SOFFIT LEVEL |
| RL | ROOF LIGHT | SV | STOP VALVE |
| RSH | ROLLER SHUTTER | SVP | SOIL VENT PIPE |
| RWP | RAIN WATER PIPE | SW | STORM WATER |
| S | SWITCH | TCB | TELEPHONE CAB BOX |
| SKT | SOCKET | TL | TRAFFIC LIGHT |
| SVP | SOIL VENT PIPE | TP | TELEGRAPH POLE |
| V | VENT | UTL | UNABLE TO LOCATE |
| WA | WARDROBE | UTR | UNABLE TO RAISE |
| | | VP | VENT PIPE |
| | | WM | WATER METER |
| | | WT | WATER TAP |

Symbols (where applicable):



Notes:

The Survey has been computed on an arbitrary grid.
 All Levels are in metres and relate to an arbitrary site datum.
 Station X1. Value 10.00m
 All direction arrows indicate DOWN unless otherwise stated.
 Drainage pipe sizes (where shown) have been gauged from the surface (for safety reasons) and should be regarded as approximate only.
 Visible features in the vicinity of any boundaries, as shown on this survey, may not represent the extent of legally conveyed ownership.
 Whilst every effort has been made to determine wall materials, no guarantee is given. Materials should be regarded as assumed unless verified by a qualified third party.



EXISTING SECTION A-A

| | | | |
|--|--|--|--|
| | | | |
| | | | |
| | | | |
| | | | |
| | | | |

| Rev | Date | By | Description |
|-----|------|----|-------------|
| | | | |
| | | | |
| | | | |
| | | | |

ARENA
 PROPERTY SERVICES
 LIMITED
 CHARTERED SURVEYORS
 LAND & MEASURED BUILDING SURVEYS
 96 Farringdon Road, London EC1R 3EA
 ☎ 020 7837 7721 www.arena-ps.com
 ✉ surveys@arena-ps.com

Client: TRIDENT BC

Project: ARIEL HOUSE
 LONDON W1T 4QJ

Drawing Title: EXISTING SECTION A-A

| | | | | |
|----------|---------|-----------|--------|----------|
| Date: | Scale: | Surveyor: | Drawn: | Checked: |
| 14.05.18 | 1:50@A1 | GT | CT | SEJ |

| | | | |
|---------|---------------|-----------|------|
| Job No: | Drawing No: | Sheet No: | Rev: |
| 18011 | 18011-13-S-AA | 1 OF 1 | |