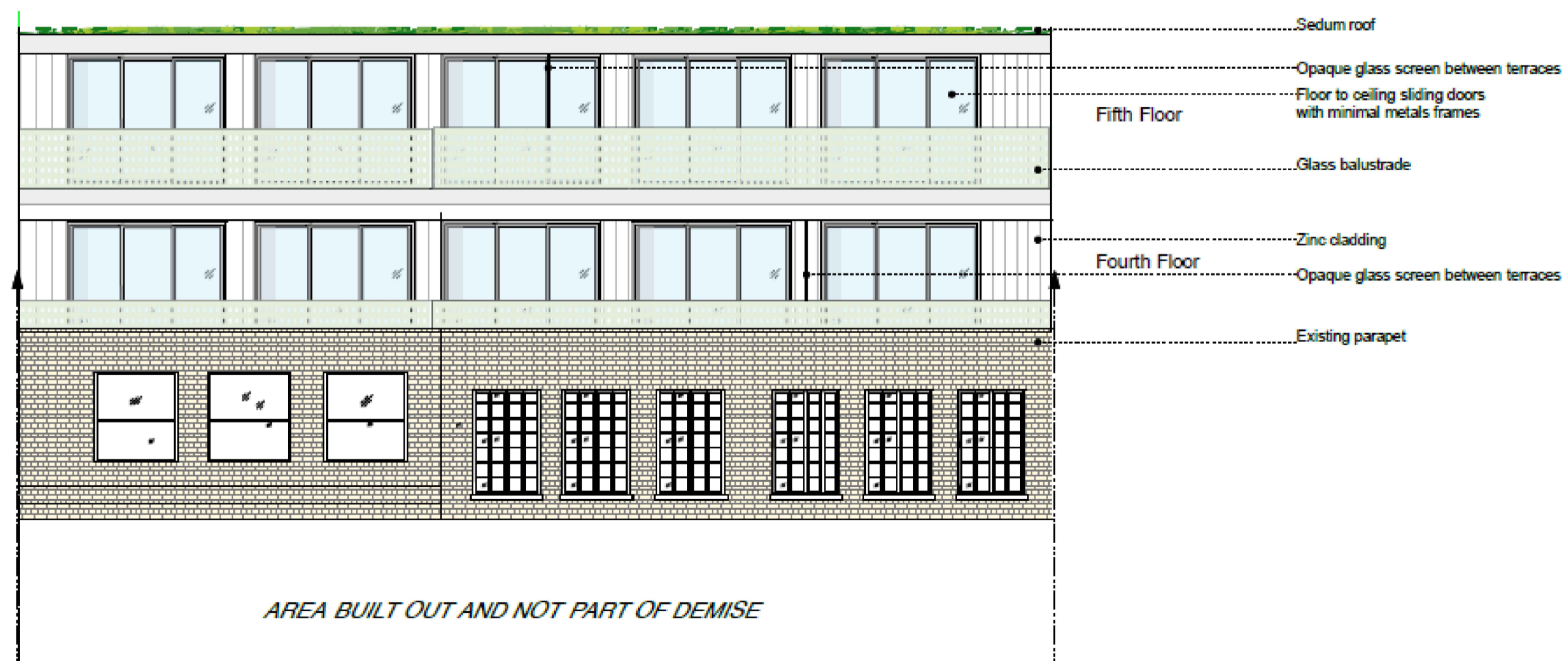


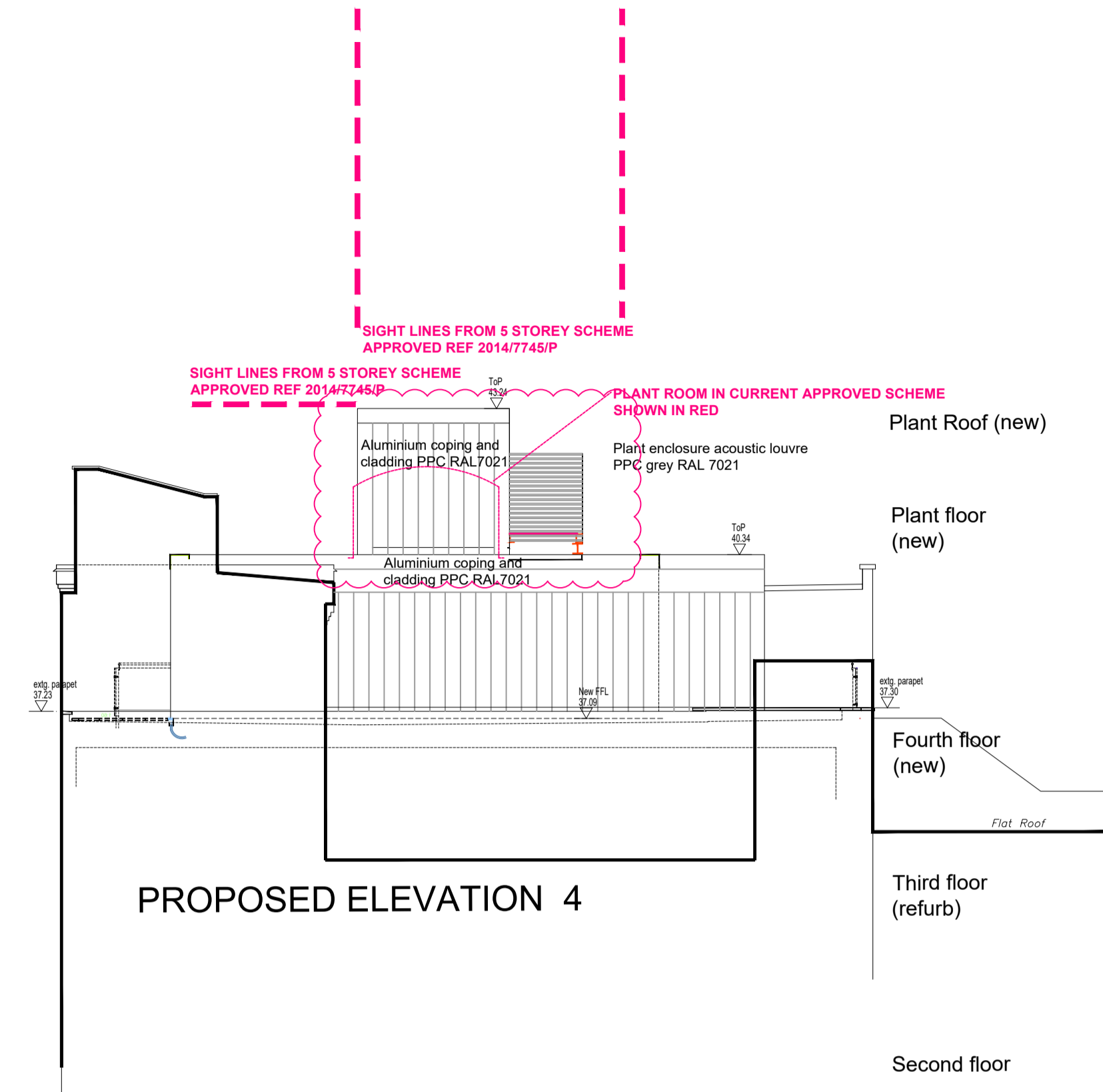
### proposed rear elevation

- plant room enlarged by 4.5sqm, enclosure cladding RAL 7021
- roof mounted plant (condensing units) location rationalised within an acoustic enclosure
- proposed elevation within the previously approved two storey scheme ref 2014/7745/P below

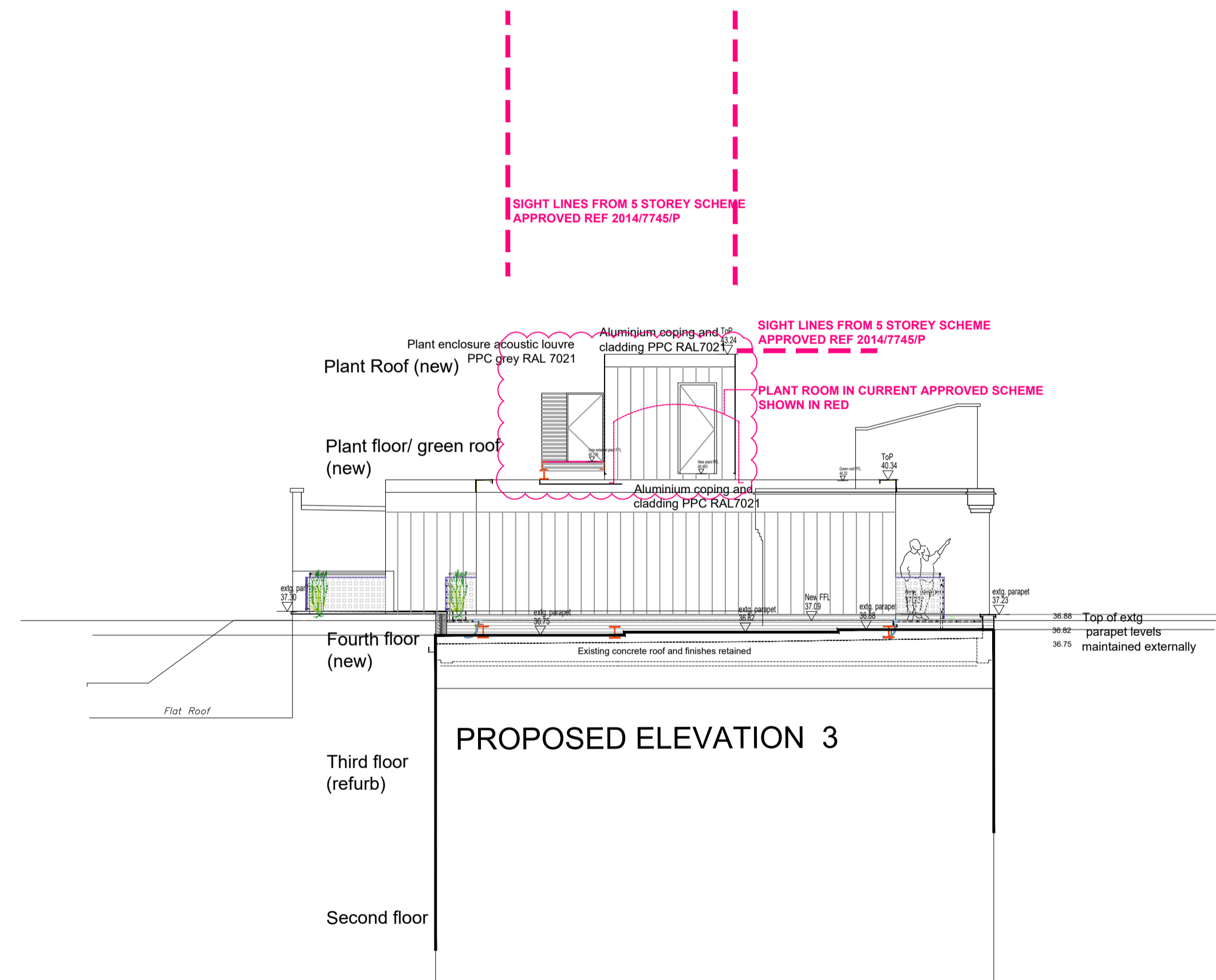


AREA BUILT OUT AND NOT PART OF DEMISE

scope related to 'Planning application to vary a Condition of Parent Application'

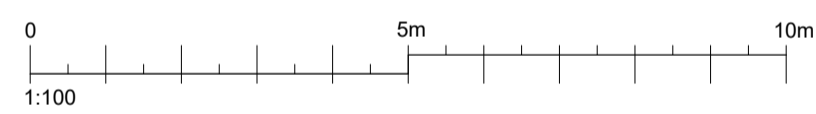


### PROPOSED ELEVATION 4



### PROPOSED ELEVATION 3

NOTES  
'provide anti vibration mounts to roof mounted plants'



Rev	Date	Description	DRN
B	02.07.2018	NOTE ADDED anti vibration mounts	LS
A	09.04.2018	PLANNING ISSUE, PLANT AREA REDUCED	LS
-	12.03.2018	PLANNING ISSUE	LS

Notes:  
All dimensions and levels to be checked by Contractor and verified before work commences; dimensions must not be scaled from this drawing. Copyright reserved.  
EC REGULATIONS - GENERAL NOTE:  
Where reference is made on this drawing to British Standards or to a specific manufacturer's products or trade names, this is intended to indicate a minimum acceptable standard of performance etc. Materials and components conforming to an equivalent European Standard may be used and supporting evidence shall be produced to confirm fitness for purpose.

**GAZELLE LONDON**  
Atlantic House, 351 Oxford Street, London, W1C 2JF  
T: 020 3771 4671  
E: info@gazelle.london  
W: gazelle.london

Client:  
SYDNEY WHARF LLP

Project:  
40-42 PARKER STREET  
LONDON WC 2B 5PQ

Drawing Title:  
ELEVATION REAR AND SIDE ELEVATIONS

Drawn By: LS	Project No: 17-0228
Date: 10.06.2017	Drawing No: P-301
Scale: 1:100@ A1	Rev'n: B