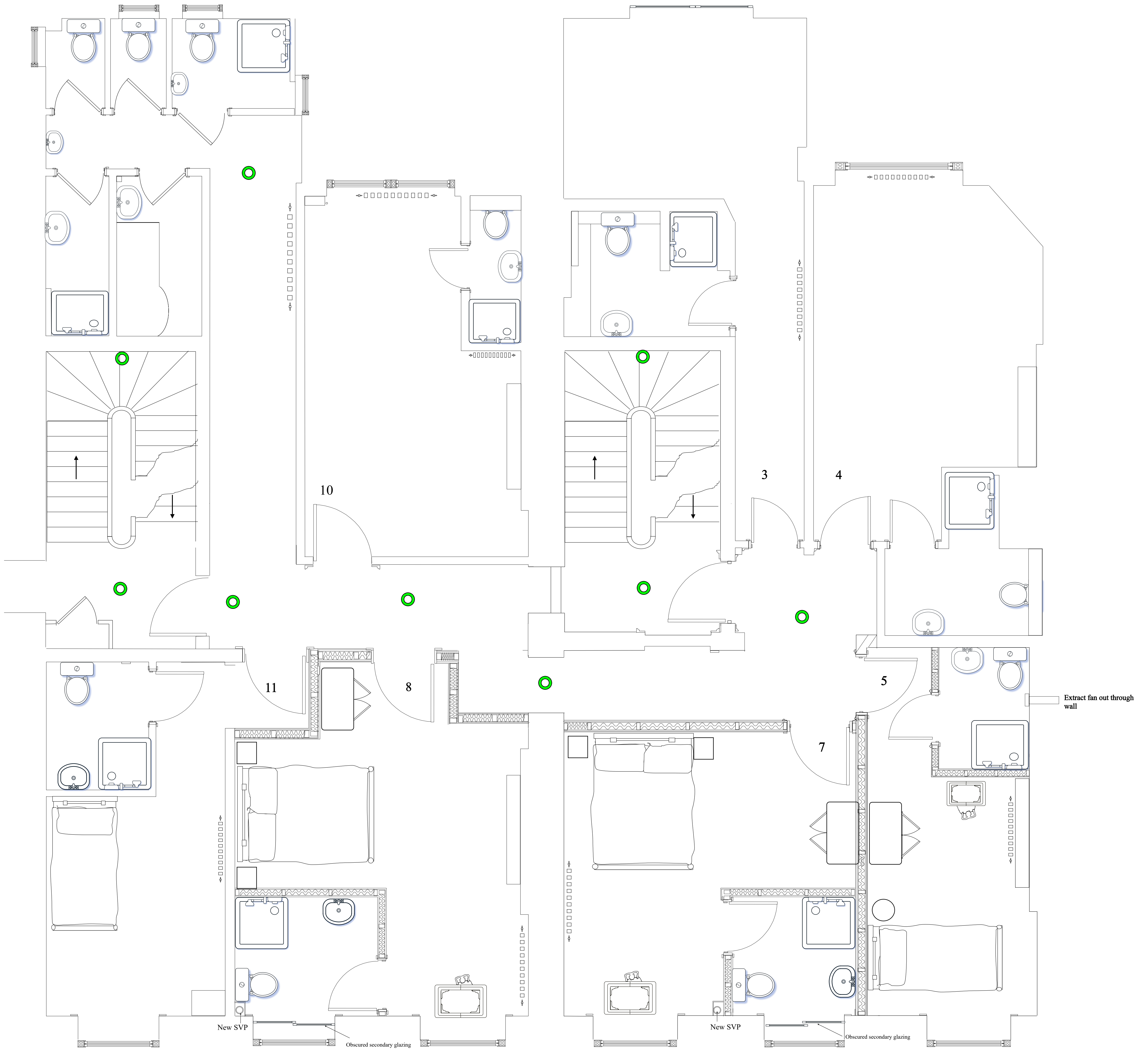
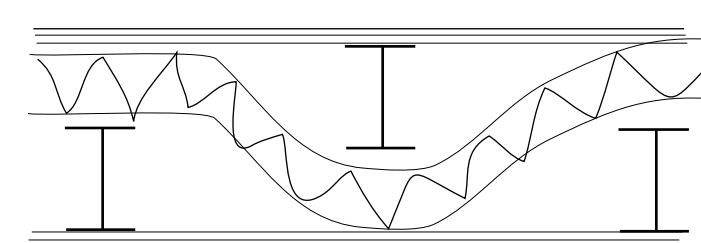


Emergency Light



Separating Partitions Between rooms and corridors

British Gypsum Staggered stud partition 92/148 comprising
 2 rows of 92/1 90 1 studs in 148 DC deep flange floor and ceiling channels
 Alternate studs staggered in channel at 300mm centres and 2 layers of
 15mm soundbloc each side and 50mm Isowool Acoustic quilt, skim finish
 60min fire resistant and RdB of 62



REVISIONS
 A: Corridor layout retained as existing