

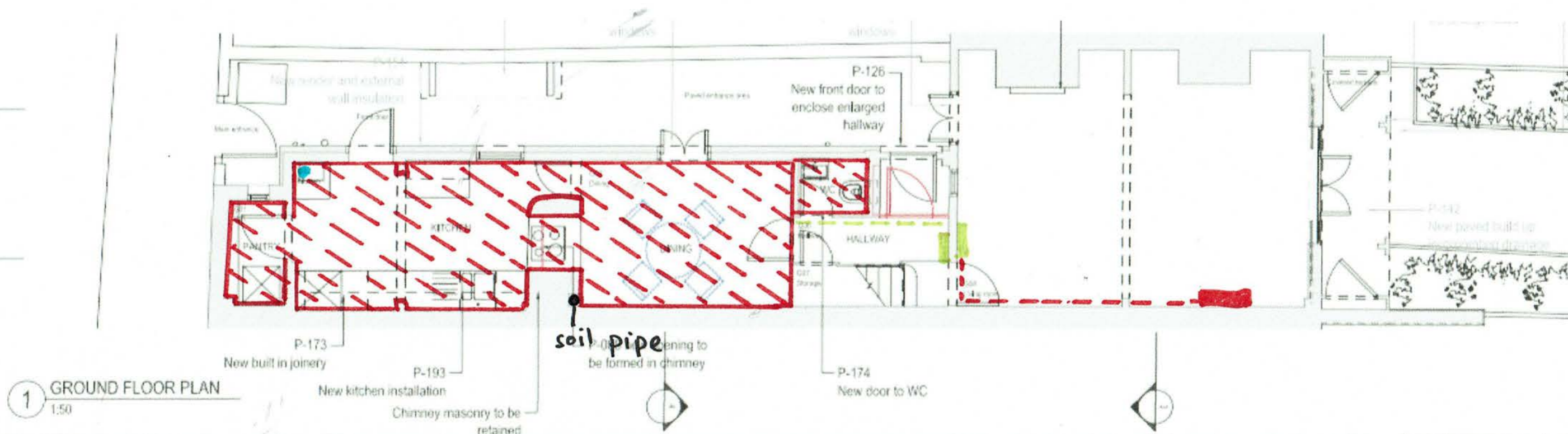
COOKE  
FAWCETT  
ARCHITECTS








**Rose Cottage, Vale of Health, NW3 1AX**  
**Services layouts and floor build-ups**  
**05.06.2018 - revB**

180605\_135\_REP\_FloorBuildups\_RevB

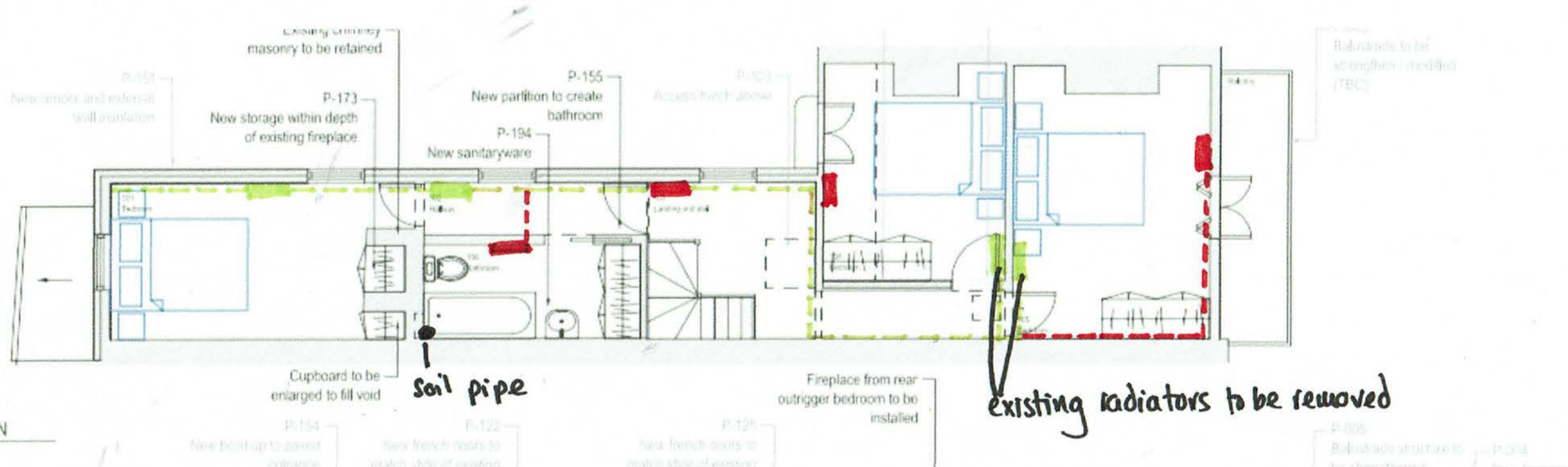
1. Services layouts
2. Floor build-ups

# Rose Cottage - Ground Floor Services Plan



-  wet underfloor heating - zones to be agreed onsite
-  ducting for all services in this area
-  risers to first floor - cabling / hot & cold feeds / radiator pipes
-  existing pipe + cable runs to be retained
-  existing radiator positions to be retained
-  extended pipe run + cable run
-  new radiator position

# Rose Cottage - First Floor Services Plan

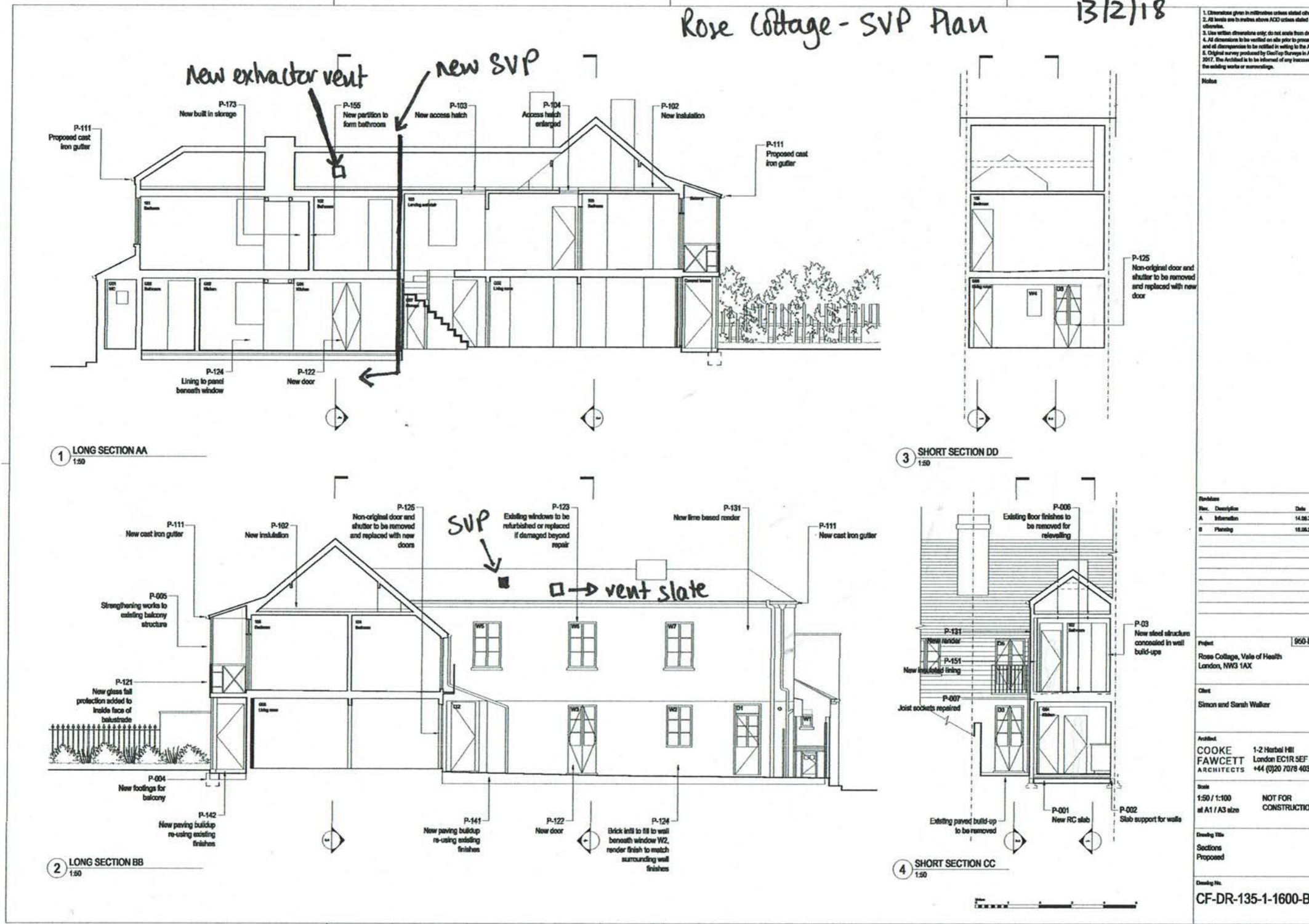


2 FIRST FLOOR PLAN  
1:50

- - - - existing pipe + cable runs to be retained (hot + cold, radiator flow + return + cables)
- - - - extended pipe runs for new radiator positions
- new radiator positions
- existing radiator positions

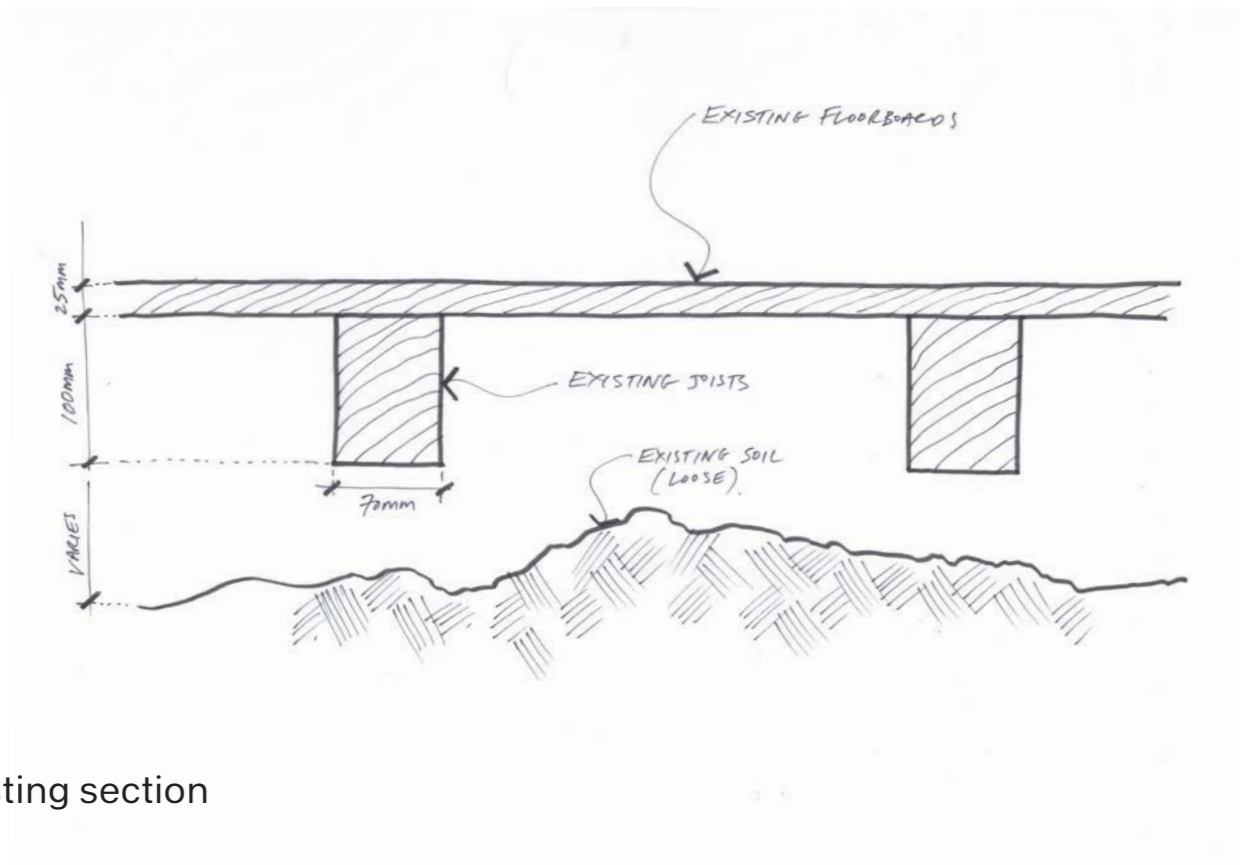
# Rose Cottage - SVP Plan

13/2/18

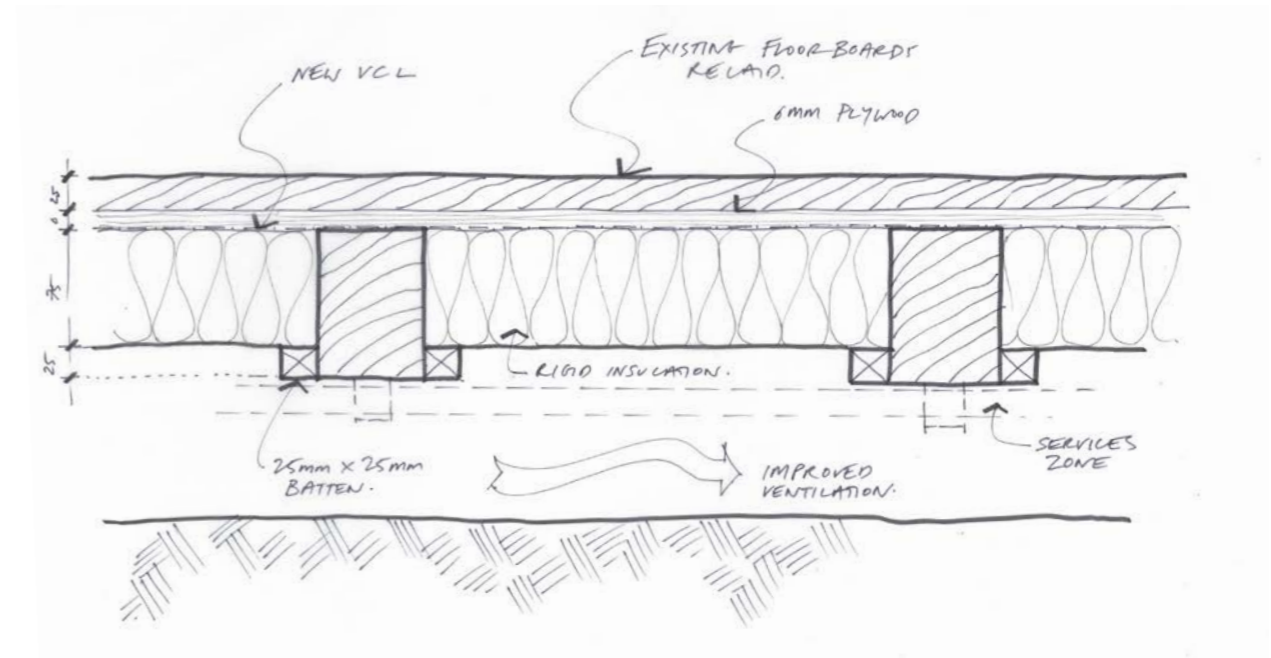


## KEY POINTS

- Existing floor is uninsulated suspended timber floor on joists. Soil beneath joists is loose and restricts airflow
- Proposed detail includes new insulation supported on battens fixed to the side of the existing joists. Soil will be compacted or removed to form an adequate space for ventilation beneath the floor.
- The existing floor boards will be retained and reinstalled on top of a new 6mm plywood deck



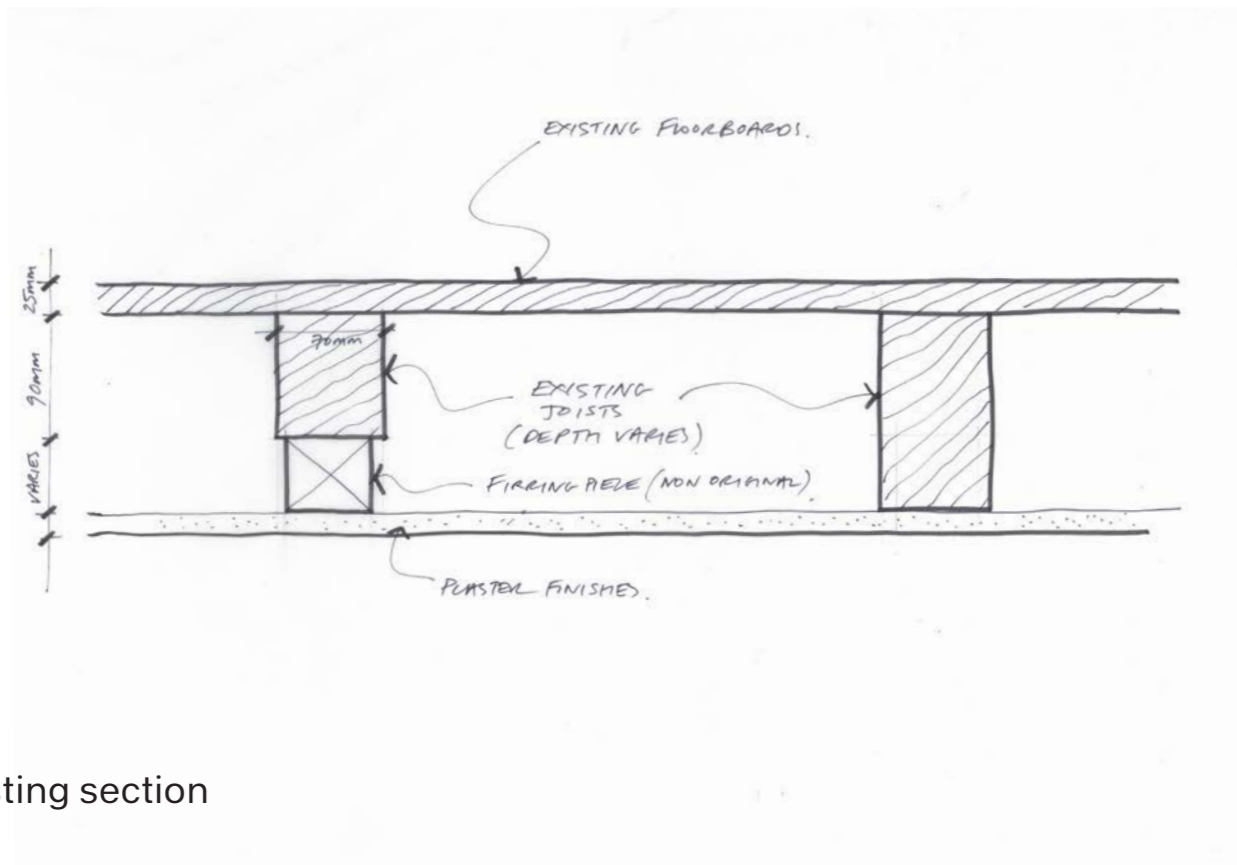
Existing section



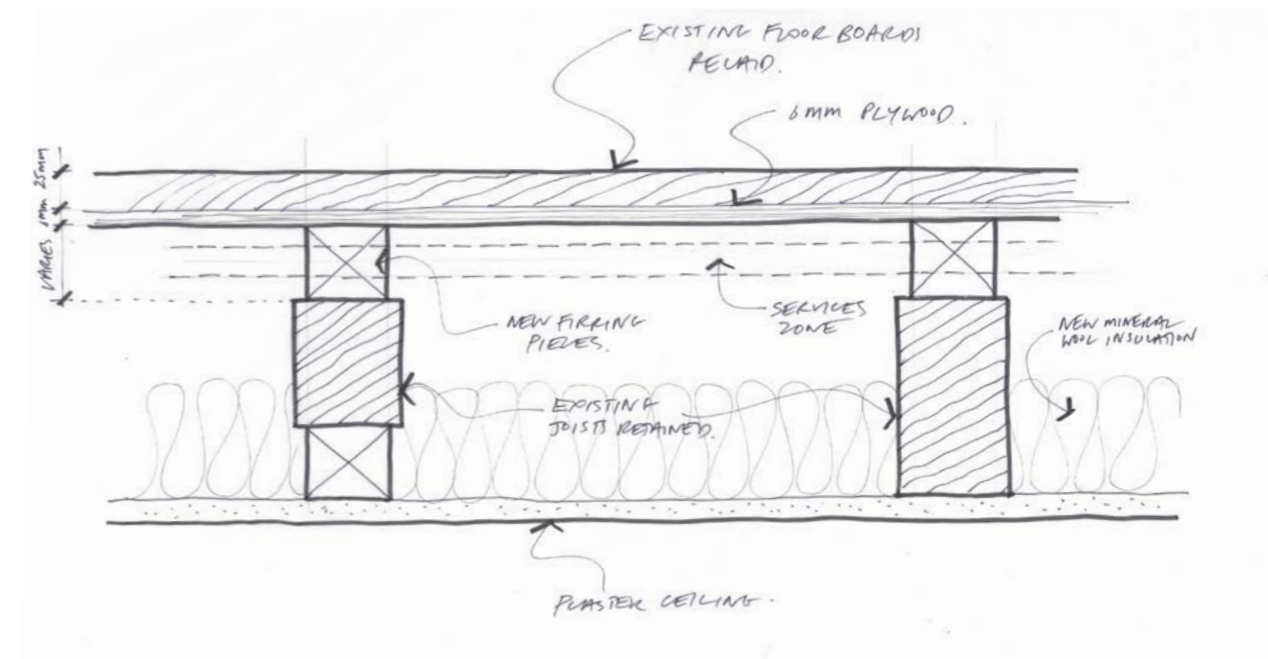
Proposed section

## KEY POINTS

- The existing floor is seriously out of level due to historic settlement. The floor on the south side of the building is up to 75mm lower than the floor on the north side.
- To compensate for this fall, new firing pieces will be fitted on top of the joists. These will be shaped to level the floor.
- A new level floor will be created by installing a 6mm plywood deck on top of the firing pieces and then reinstalling the existing floor boards.
- Insulation will be installed in the floor voids to improve acoustic absorption.
- The zone created by the firing pieces will create a new space for running services, avoiding the need to notch existing joists.



Existing section



Proposed section

© 2018 Cooke Fawcett Ltd.

This document and the ideas incorporated herein, as an instrument of professional service, is the property of Cooke Fawcett Ltd. and is not to be used, reproduced or transmitted, in whole or in part, in any form or by any means without the prior written authorisation of Cooke Fawcett Ltd.

Unless indicated otherwise, all proprietary material in this document is the property of Cooke Fawcett Ltd. Every reasonable attempt has been made to identify the authors and owners of any proprietary material that does not belong to Cooke Fawcett Ltd. We apologise for any errors or omissions that may have occurred. We will endeavour to correct them in subsequent uses.