

COOKE
FAWCETT
ARCHITECTS

Rose Cottage, Vale of Health, NW3 1AX

Balustrade

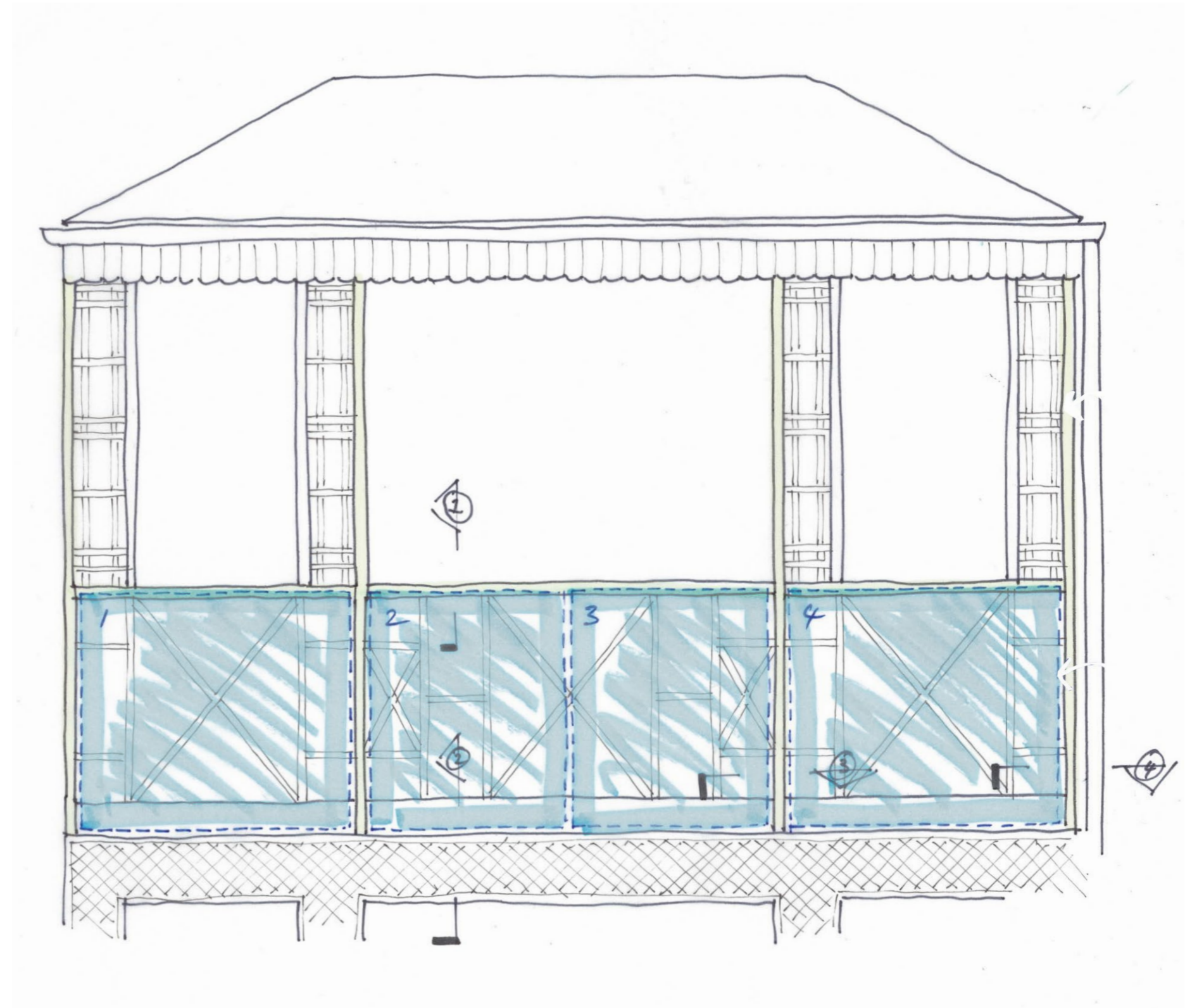
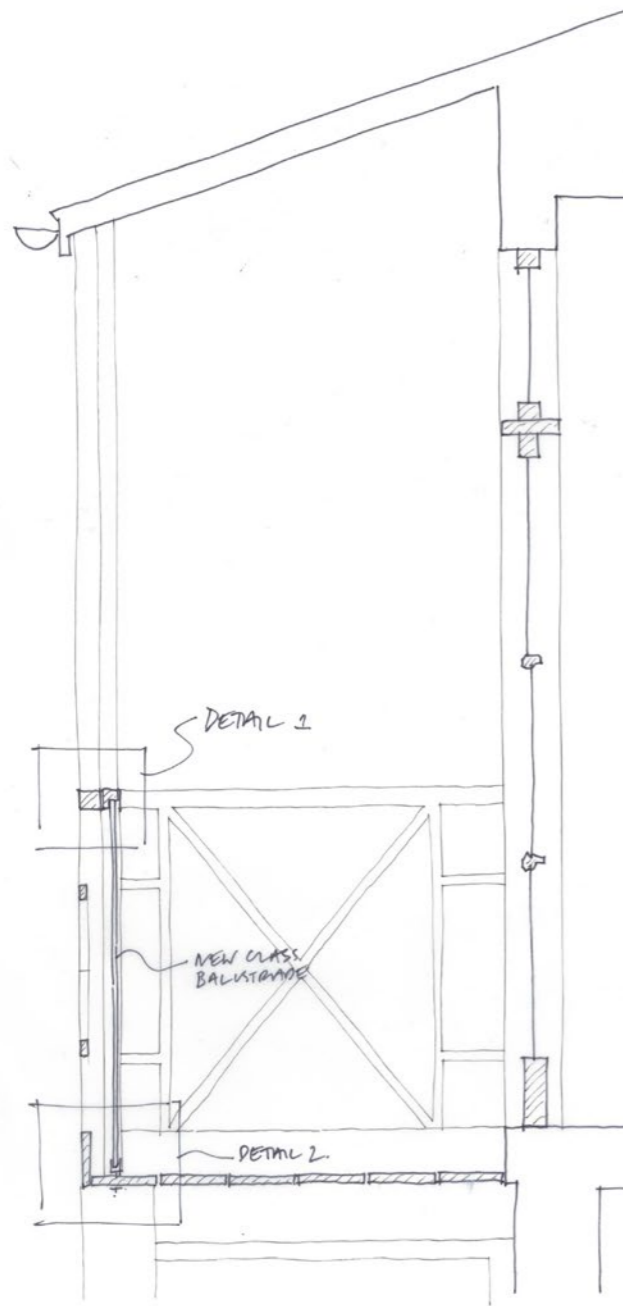
16.03.2018

180316_135_REP_Balustrade

1. Overview (Section and Elevation)
2. Details

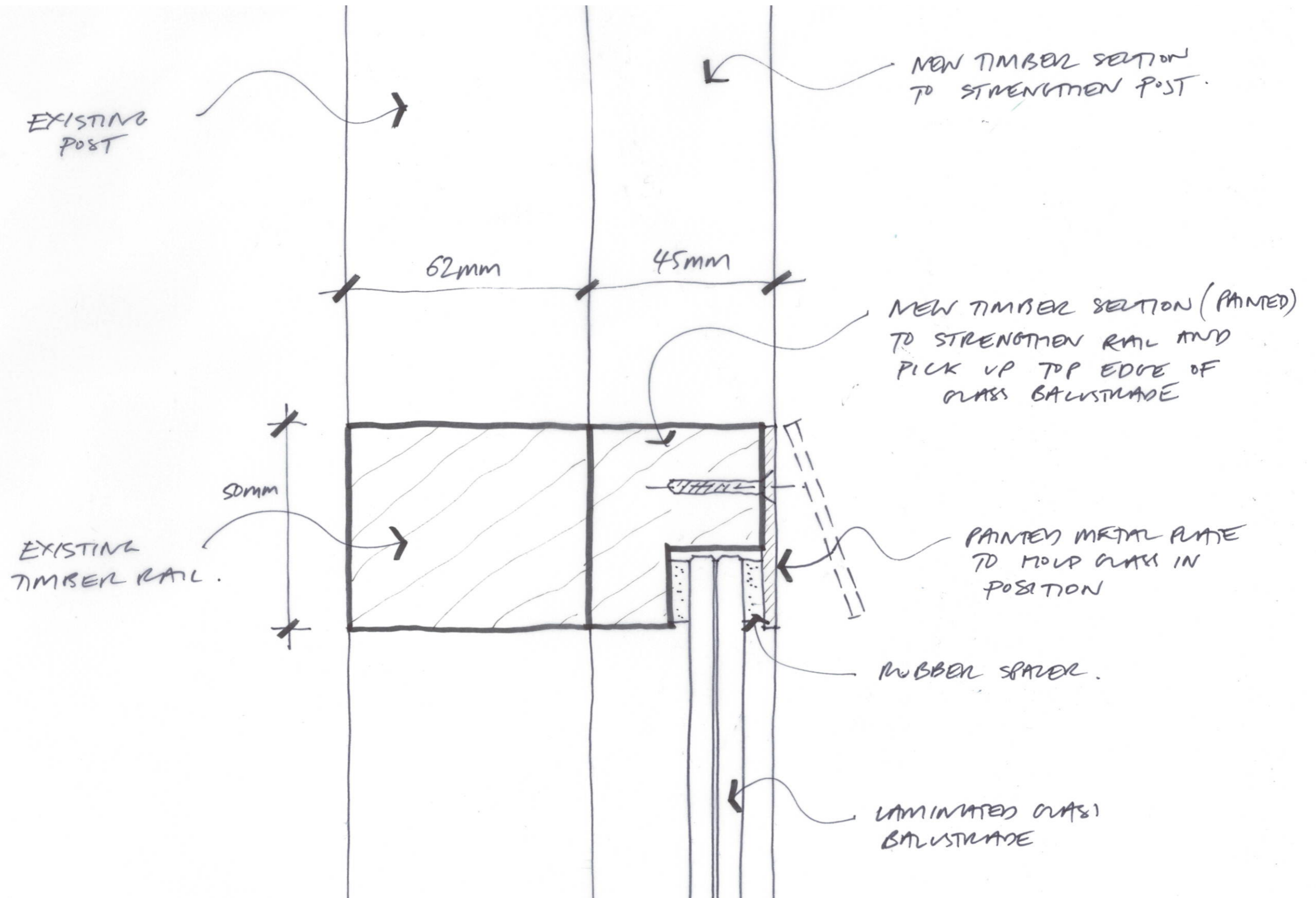
KEY POINTS

- Blue highlight indicates extent of glass
- Balustrade proposed in sections to respect arrangement of verticals and keep weight of glass elements within manual handling restrictions.
- Final design subject to review by structural engineer, building control and glass subcontractor



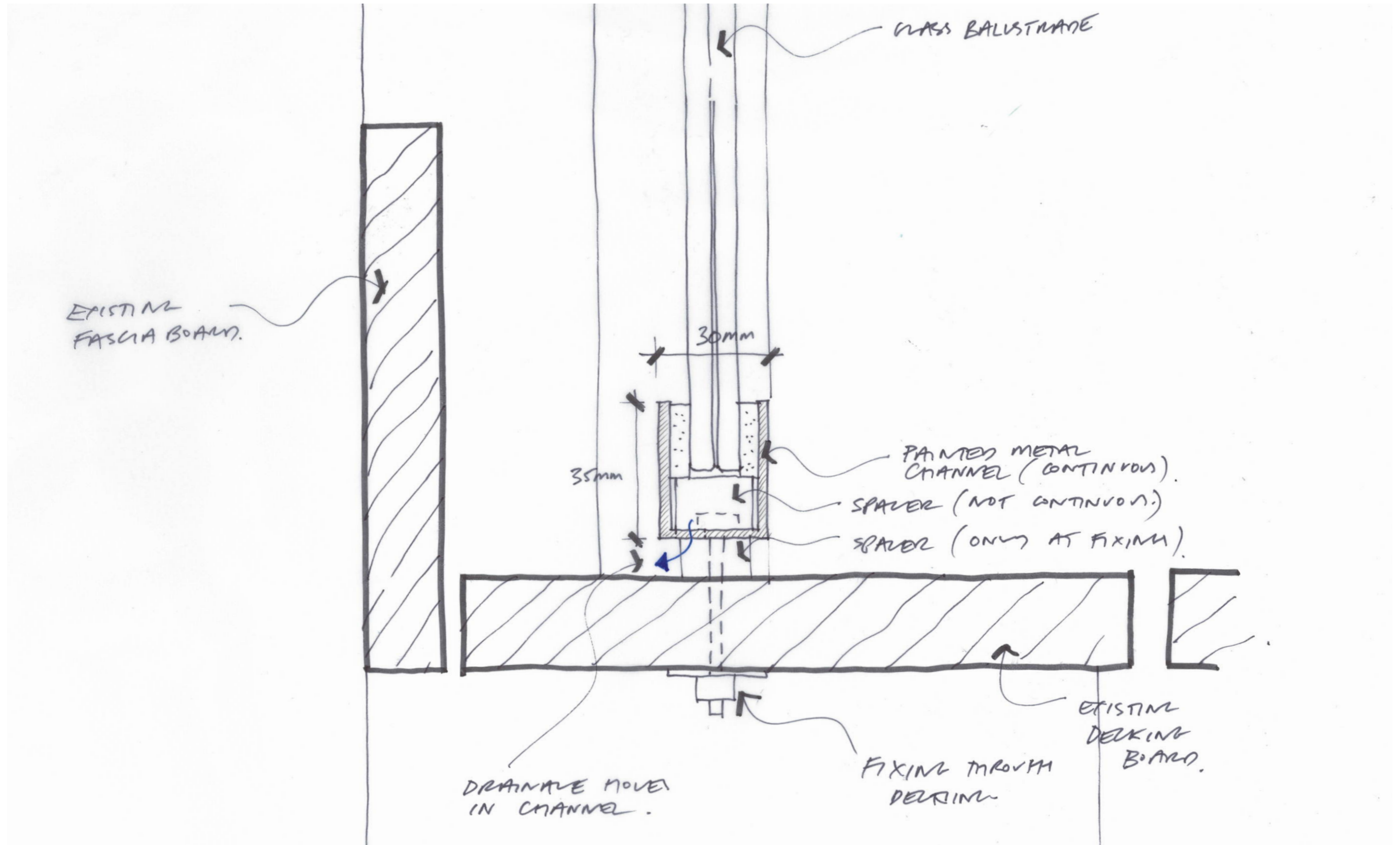
KEY POINTS

- New timber section added to strengthen handrail (as proposed by structural engineer - information included in previous consented application)
- Removable metal plate screwed into rail restrains glass at top of balustrade



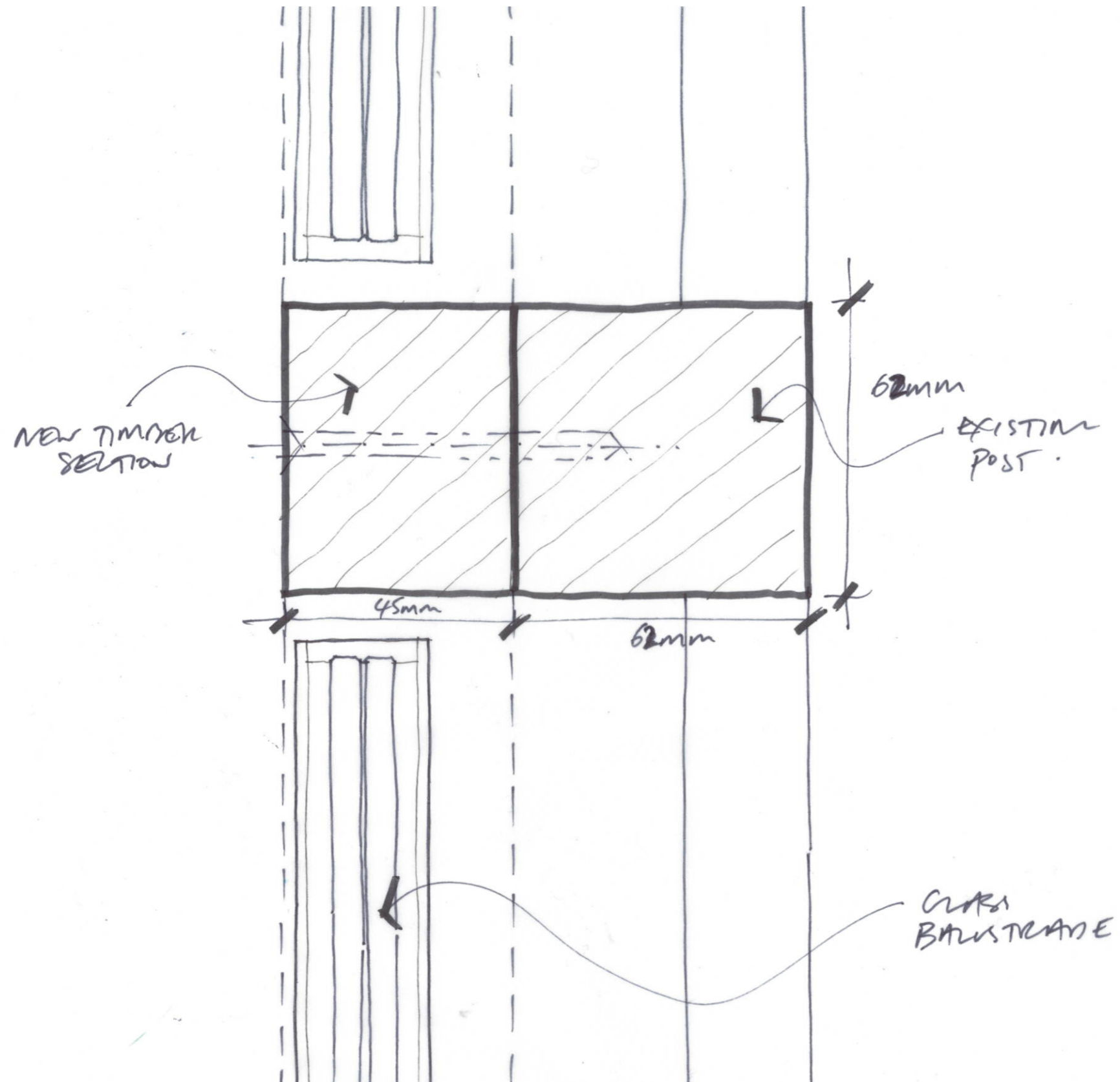
KEY POINTS

- Continuous metal profile holds glass at base
- Fixing through decking board either fixed onto deck or joists below



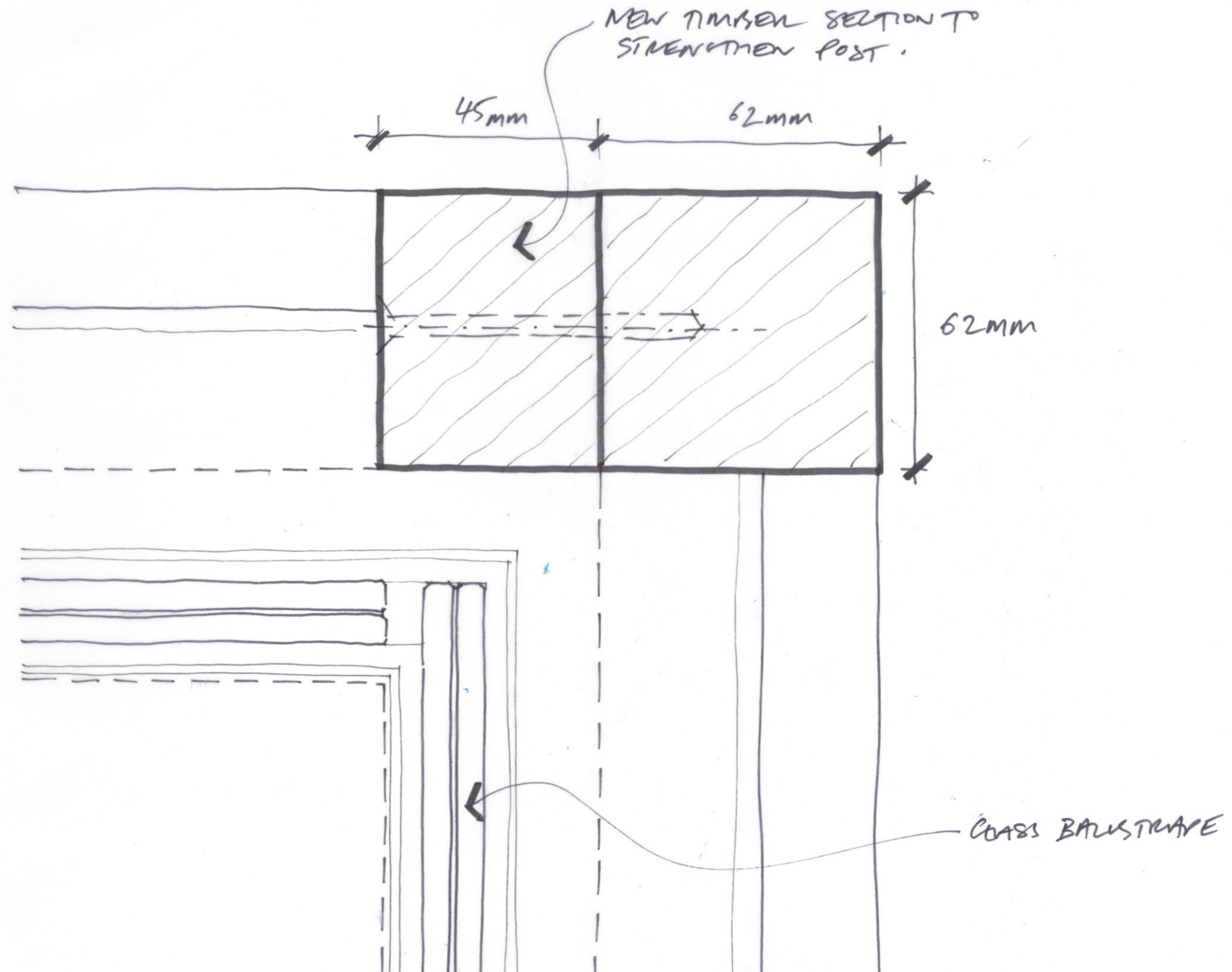
KEY POINTS

- New timber section added to strengthen post
- Glass balustrade split into sections either side of post



KEY POINTS

- New timber section added to strengthen post
- Glass balustrade split into sections at corner



© 2018 Cooke Fawcett Ltd.

This document and the ideas incorporated herein, as an instrument of professional service, is the property of Cooke Fawcett Ltd. and is not to be used, reproduced or transmitted, in whole or in part, in any form or by any means without the prior written authorisation of Cooke Fawcett Ltd.

Unless indicated otherwise, all proprietary material in this document is the property of Cooke Fawcett Ltd. Every reasonable attempt has been made to identify the authors and owners of any proprietary material that does not belong to Cooke Fawcett Ltd. We apologise for any errors or omissions that may have occurred. We will endeavour to correct them in subsequent uses.