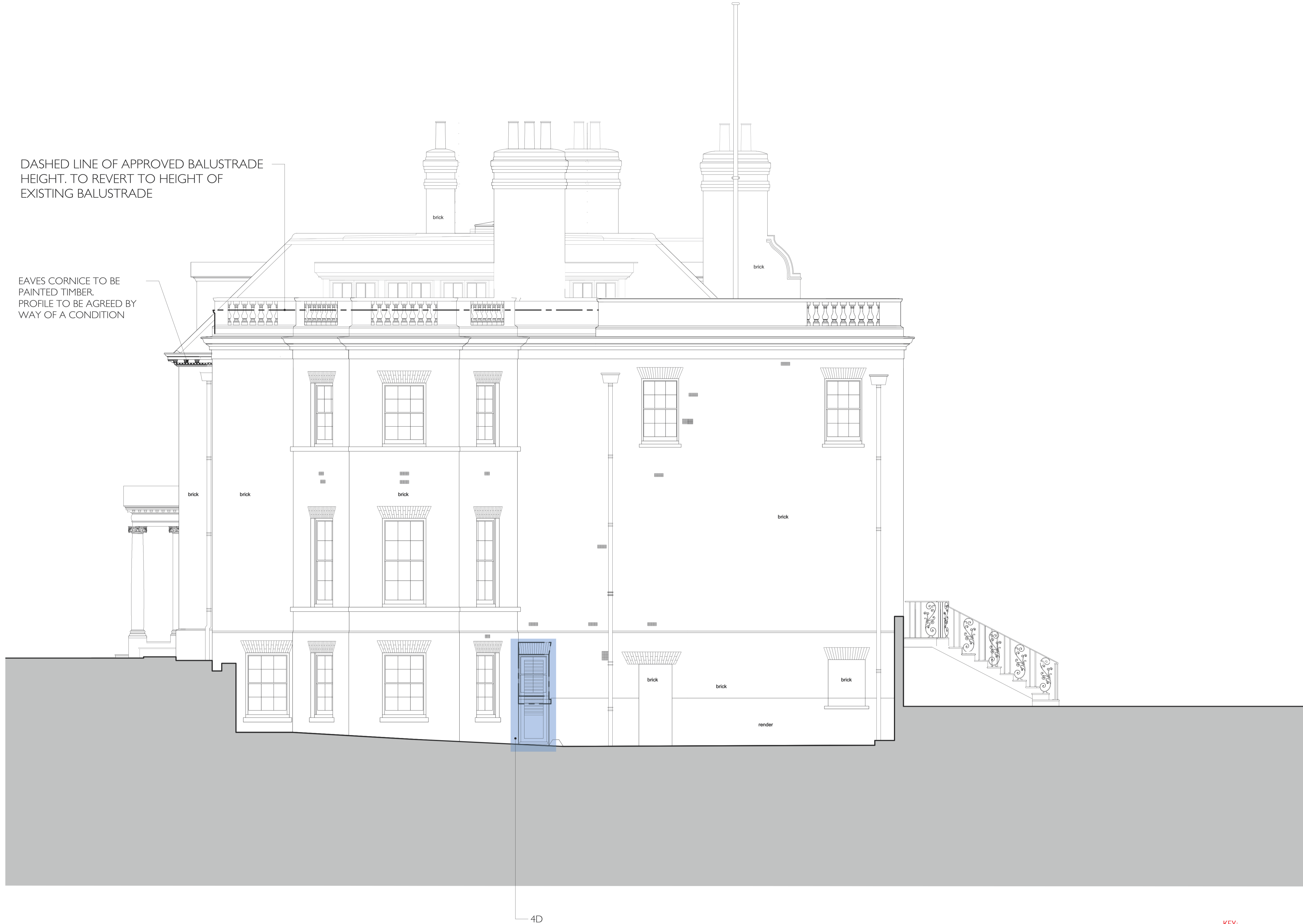


DASHED LINE OF APPROVED BALUSTRADE HEIGHT. TO REVERT TO HEIGHT OF EXISTING BALUSTRADE

EAVES CORNICE TO BE PAINTED TIMBER. PROFILE TO BE AGREED BY WAY OF A CONDITION



- KEY:**
- Existing to be removed
 - 1 Proposed opening within new-build building fabric, not previously approved
 - 2 Proposed opening within Listed building fabric, not previously approved
 - 3 Previously approved windows within new-build building fabric, to be converted to doors
 - 4 Proposed doors to be placed in extended window openings within existing building fabric
 - 5 Proposed or amended rooflights or roof features to new-build building fabric
 - 6 Proposed internal alterations to Listed building fabric, not previously approved

PLANNING

Revisions:
 Rev A: 05/12/12 refer to Internal and External Schedule of Minor Material Scheme Amendments
 Rev B: 11/05/17 Drawings revised to show proposed amendments to previously approved and implemented scheme (ref: 2008/0661/P and 2008/0662/L, renewed ref: 2011-4908/L).

Rev C: 14/07/17 Existing lower ground window converted to door to provide external access to pool plant
 Rev D: 26/06/18 Amendments following meeting with Conservation Officer. Also refer to submitted, revised, Design & Energy Statement
 Rev E: 02/07/18 Note added re: eaves cornice

Project HEATH HOUSE, HAMPSTEAD, NW3 7ET		
Drawing PROPOSED EAST ELEVATION		
Drawing No. HH-1017/AP 04E	Scale 1:50 @ A1 / 1:100 @ A3	Date 11.05.2017

CLIVE CHAPMAN ARCHITECTS
 SUSTAINABILITY CONSULTANTS
 4 EEL PIE ISLAND
 TWICKENHAM, MIDDLESEX TW1 3DY
 TELEPHONE 020 8891 4837
 FACSIMILE 020 8744 3152
 E MAIL CC@CCAR.CO.UK