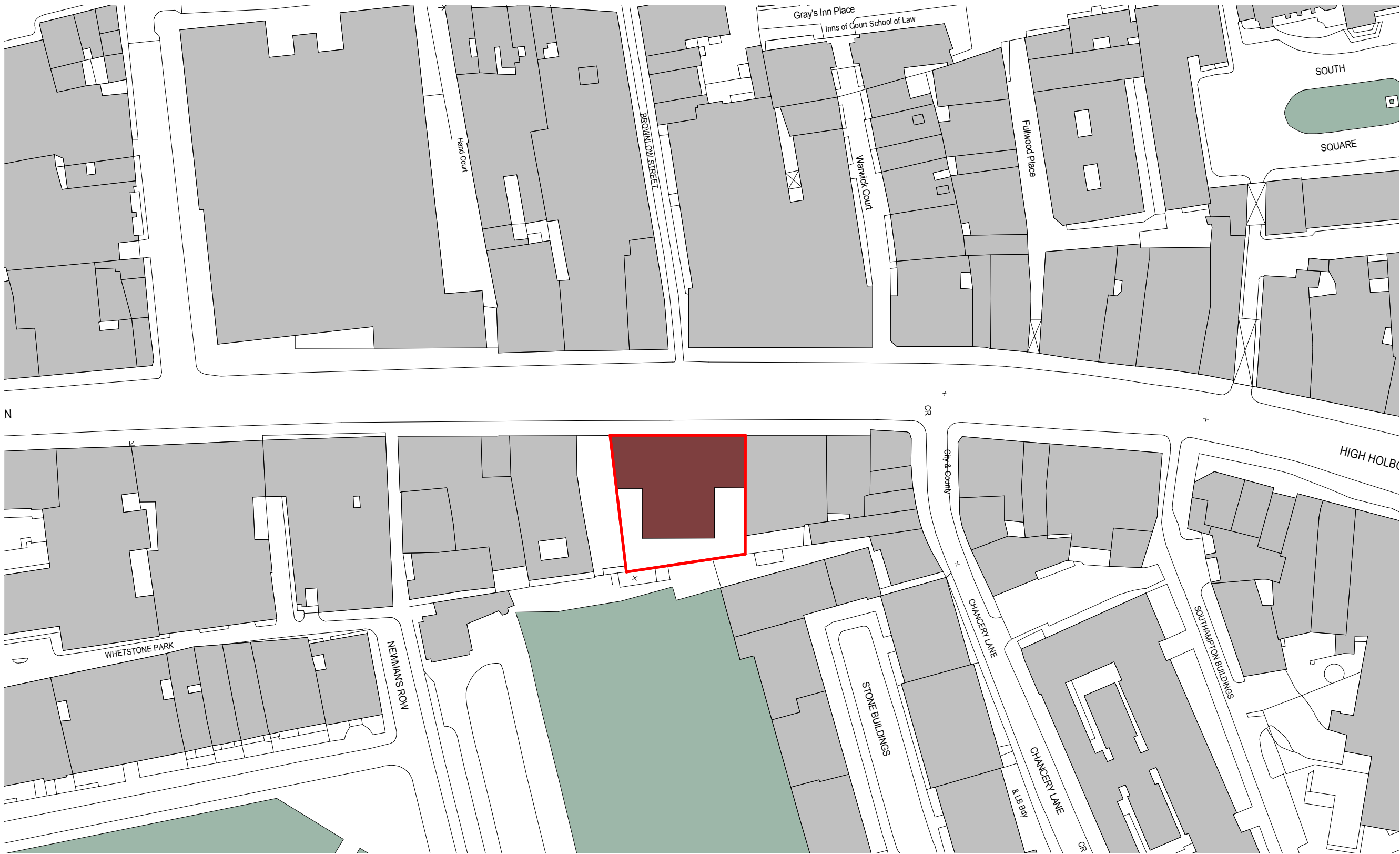


Lincoln House, High Holborn

---

# 8.0 PLANS, SECTIONS & ELEVATIONS

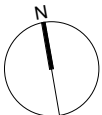


1 GF-SitePlan  
0420 1:500

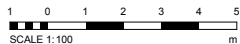
PLANNING

Keyplan

North



Lincoln House Building  
Site Boundary Line



| No. | Revision        | Date     | Initial | Chk'd |
|-----|-----------------|----------|---------|-------|
| 2   | PLANNING ISSUE  | 28.02.18 | BH      | BH    |
| 1   | PRE-APP 2 Issue | 17.02.17 | BH      | BH    |

20/03/2018 12:18:01

- Notes:
1. Do not scale.
  2. Contractor to Check all dimensions and report omissions and errors to the Architect.
  3. EPR Architects accepts no liability for use of this drawing by parties other than the party for whom it was prepared or for purposes other than those for which it was prepared.
  4. This drawing is issued in design format as an uncontrolled version to enable the recipient to prepare their own documents/drawings/models for which they are solely responsible. This drawing is based on project information current at the time of issue. EPR Architects Limited accepts no liability for any alterations or additions to or discrepancies arising out of any change to such project information that occurs to the information after it is issued by EPR Architects Limited.
  5. This drawing does not contain shared coordinates and is not issued for coordination purposes.

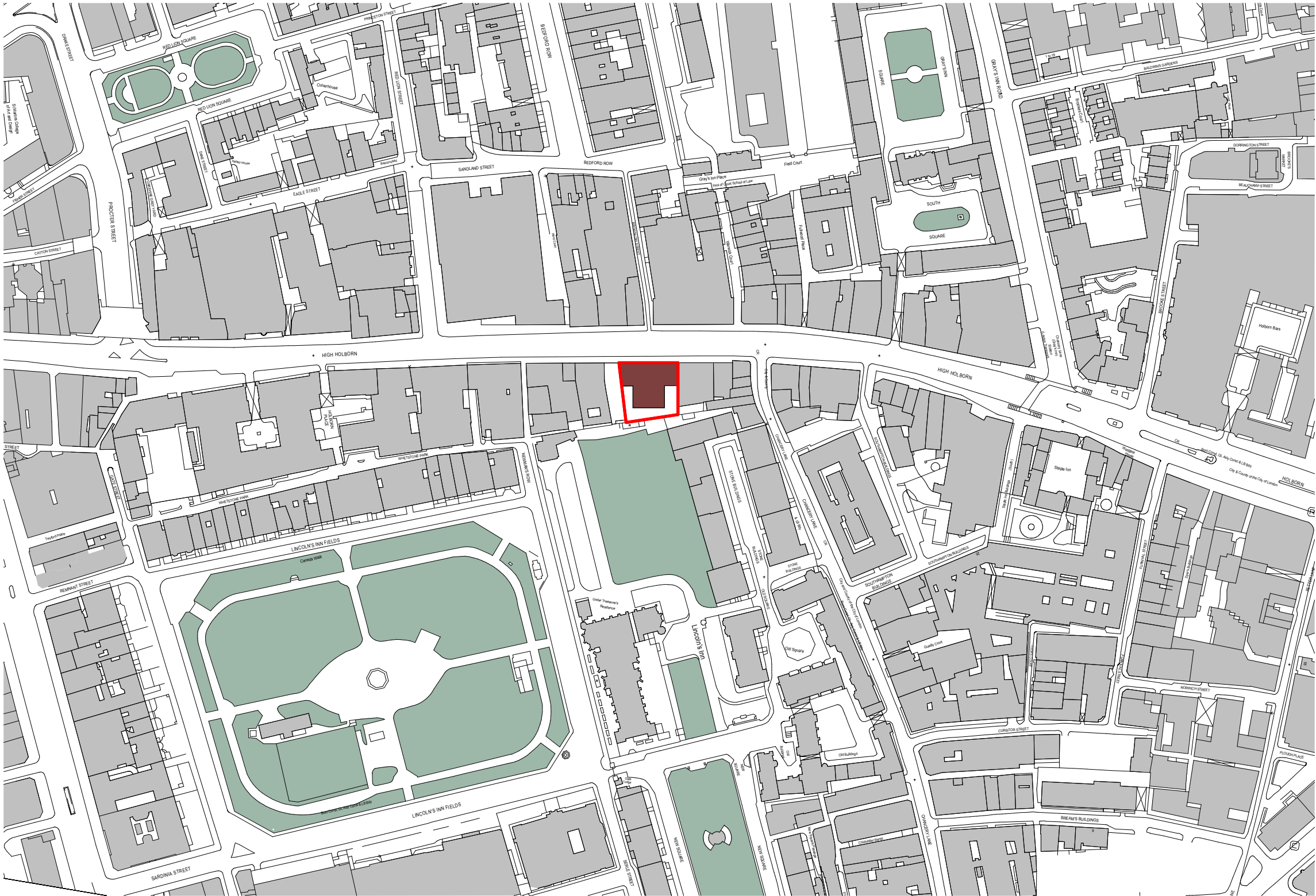
**EPR**  
architects

30 Millbank  
London SW1P 4DU  
+44 (0) 20 7932 7600  
www.epr.co.uk

Lincoln House  
296-302 High Holborn  
WC1V 7JH London

Site Location Plan

| Project No.               | Originator | Zone | Level | Type | Role | Number | Rev |
|---------------------------|------------|------|-------|------|------|--------|-----|
| 10323-EPR-00-XX-DR-A-0101 |            |      |       |      |      |        | 2   |

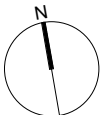


1  
0420 GF-SitePlan Copy 2  
1:1250

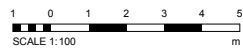
PLANNING

Keyplan

North



Lincoln House Building  
Site Boundary Line



| No.                 | Revision        | Date     | Initial | Chk'd |
|---------------------|-----------------|----------|---------|-------|
| 2                   | PLANNING ISSUE  | 28.02.18 | BH      | BH    |
| 1                   | PRE-APP 2 Issue | 17.02.17 | BH      | BH    |
| 20/03/2018 12:18:03 |                 |          |         |       |

- Notes:
1. Do not scale.
  2. Contractor to Check all dimensions and report omissions and errors to the Architect.
  3. EPR Architects accepts no liability for use of this drawing by parties other than the party for whom it was prepared or for purposes other than those for which it was prepared.
  4. This drawing is issued in dwg/dgn format as an uncontrolled version to enable the recipient to prepare their own documents/drawings/models for which they are solely responsible. This drawing is based on project information current at the time of issue. EPR Architects Limited accepts no liability for any alterations or additions to or discrepancies arising out of any changes to such project information that occurs to the information after it is issued by EPR Architects Limited.
  5. This drawing does not contain shared coordinates and is not issued for coordination purposes.

**EPR**  
architects

30 Millbank  
London SW1P 4DU  
+44 (0) 20 7932 7600  
www.epr.co.uk

Lincoln House  
296-302 High Holborn  
WC1V 7JH London

Site Location Plan 1-1250

For Planning 1:1250 @ A1 01/30/17

| Project No.  | Originator | Zone | Level | Type | Role | Number | Rev |
|--------------|------------|------|-------|------|------|--------|-----|
| 10323-EPR-00 | XX         | DR   | A     | 0102 |      | 2      |     |



1  
0421  
0239-Basement  
1:100

KEY

- Office
- WCs
- Plant
- Cycle Store
- Shower / Change
- Bin Store

PLANNING

Notes:  
1. Do not scale.  
2. Contractor to Check all dimensions and report omissions and errors to the Architect.  
3. EPR Architects accepts no liability for use of this drawing by parties other than the party for whom it was prepared or for purposes other than those for which it was prepared.  
4. This drawing is issued in dwg/dgn format as an uncontrolled version to enable the recipient to prepare their own documents/drawings/models for which they are solely responsible. This drawing is based on project information current at the time of issue. EPR Architects Limited accepts no liability for any alterations or additions to or discrepancies arising out of any change to such project information that occurs to the information after it is issued by EPR Architects Limited.  
5. This drawing does not contain shared coordinates and is not issued for coordination purposes.

**EPR**  
architects

30 Millbank  
London SW1P 4DU  
+44 (0) 20 7932 7600  
www.epr.co.uk

Lincoln House  
296-302 High Holborn  
WC1V 7JH London

Proposed Basement Plan

For Planning 1 : 100 @ A1 25.10.16

| Project No   | Originator | Zone | Level | Type | Role | Number | Rev |
|--------------|------------|------|-------|------|------|--------|-----|
| 10323-EPR-00 | B1         | DR   | A     | 0239 |      | 5      |     |

| No. | Revision  | Date     | Initial | Chk'd |
|-----|---|----------|---------|-------|
| 5   | PLANNING ISSUE                                  | 28.02.18 | BH      | BH    |
| 4   | PRE-APP 2 Issue                                 | 17.02.17 | BH      | BH    |
| 3   | Plans updated to reflect MEP and layout changes | 09.01.17 | BH      |       |
| 2   | Rear facade updated to reflect CIC comments     | 05.12.16 | BH      | BH    |
| 1   | Plans Updated following Planners feedback       | 25.11.16 | BH      | BH    |

No.

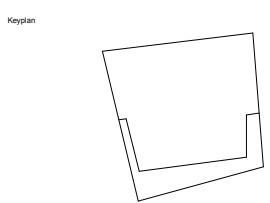
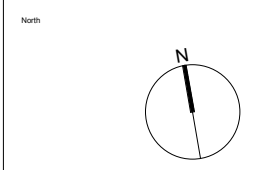
Revision

Date

Initial

Chk'd

19/03/2018 14:30:45





Keyplan

North

1 0 1 2 3 4 5  
SCALE 1:100  
m

6 PLANNING ISSUE 26.02.18 BH BH  
5 PRE-APP 3 issue 21.02.18 BH JB  
4 PRE-APP 2 issue 17.02.17 BH  
3 Plans updated to reflect MEP and layout changes 09.01.17 BH  
2 Floor layouts updated to reflect CSE comments 05.12.16 BH BH  
1 Plans Updated following Planners feedback 25.11.16 BH BH

| No.        | Revision | Date | Initial | Chk'd |
|------------|----------|------|---------|-------|
| 19/03/2018 | 14:30:48 |      |         |       |

Notes:

1. Do not scale.
2. Contractor to Check all dimensions and report omissions and errors to the Architect.
3. EPR Architects accepts no liability for use of this drawing by parties other than the party for whom it was prepared or for purposes other than those for which it was prepared.
4. This drawing is issued in design format as an uncontrolled version to enable the recipient to prepare their own documents/drawings/models for which they are solely responsible. This drawing is based on project information current at the time of issue. EPR Architects Limited accepts no liability for any alterations or additions to or discrepancies arising out of any change to such project information that occurs to the information after it is issued by EPR Architects Limited.
5. This drawing does not contain shared coordinates and is not issued for coordination purposes.

PLANNING

**EPR architects**

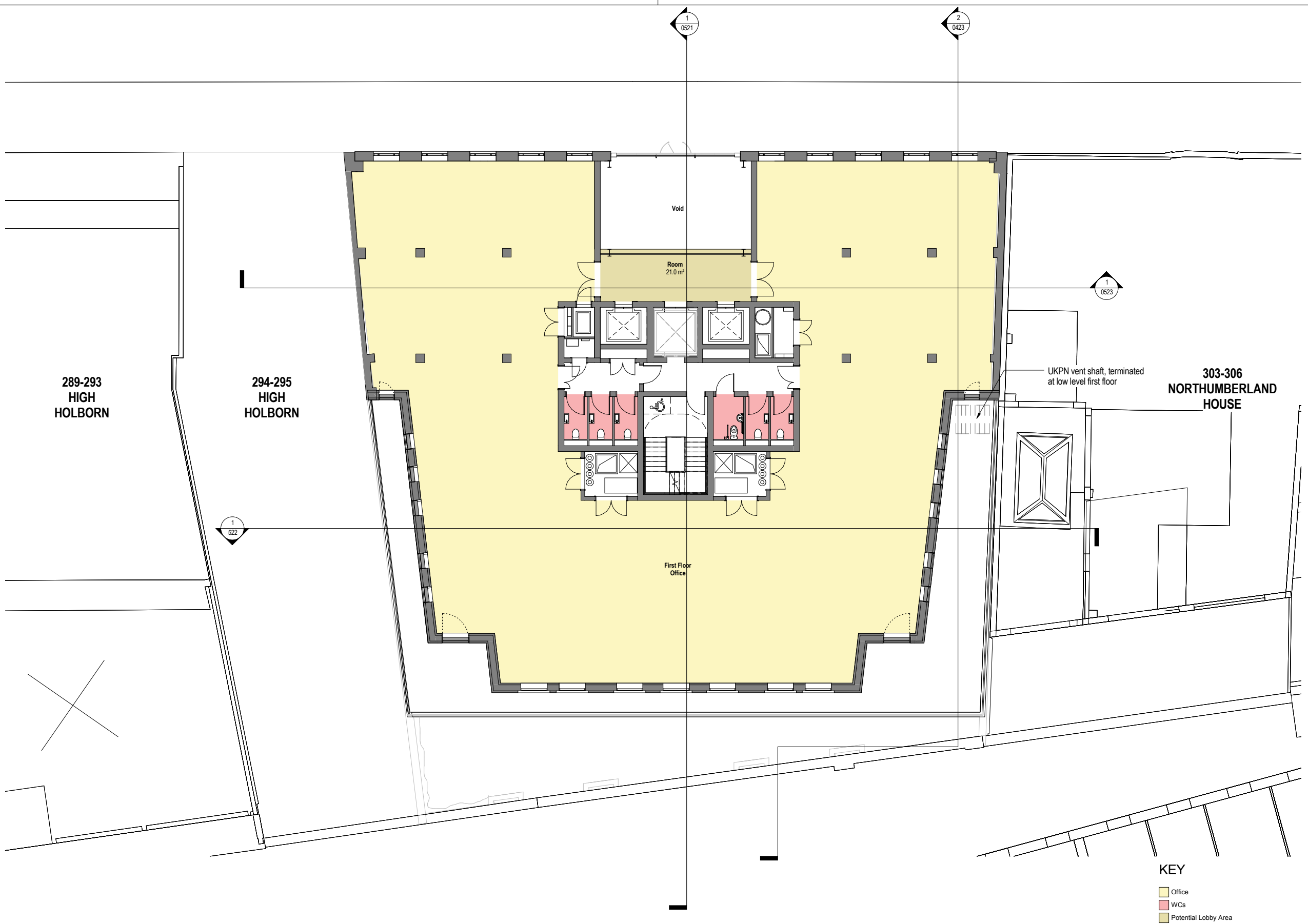
30 Millbank  
London SW1P 4DU  
+44 (0) 20 7932 7600  
www.epr.co.uk

Lincoln House  
296-302 High Holborn  
WC1V 7JH London

Proposed Ground Plan

| Project No   | Originator | Zone | Level | Type | Role | Number | Rev |
|--------------|------------|------|-------|------|------|--------|-----|
| 10323-EPR-00 | GF         | DR   | A     | 0240 |      | 6      |     |



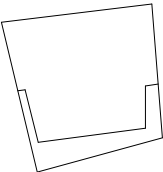


KEY

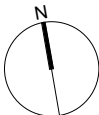
- Office
- WCs
- Potential Lobby Area

PLANNING

Keyplan



North



| No. | Revision  | Date     | Initial | Chk'd |
|-----|---|----------|---------|-------|
| 6   | PLANNING ISSUE                                  | 28.02.18 | BH      | BH    |
| 5   | PRE-APP 3 Issue                                 | 21.02.18 | BH      | JB    |
| 4   | PRE-APP 2 Issue                                 | 17.02.17 | BH      | BH    |
| 3   | Plans updated to reflect MEP and layout changes | 09.01.17 | BH      |       |
| 2   | Rear facade updated to reflect CSE comments     | 05.12.16 | BH      | BH    |
| 1   | Plans Updated following Planners feedback       | 25.11.16 | BH      | BH    |

19/03/2018 14:30:50

- Notes:
1. Do not scale.
  2. Contractor to Check all dimensions and report omissions and errors to the Architect.
  3. EPR Architects accepts no liability for use of this drawing by parties other than the party for whom it was prepared or for purposes other than those for which it was prepared.
  4. This drawing is issued in dwg/dgn format as an uncontrolled version to enable the recipient to prepare their own documents/drawings/models for which they are solely responsible. This drawing is based on project information current at the time of issue. EPR Architects Limited accepts no liability for any alterations or additions to or discrepancies arising out of any change to such project information that occurs to the information after it is issued by EPR Architects Limited.
  5. This drawing does not contain shared coordinates and is not issued for coordination purposes.

**EPR**  
architects

30 Millbank  
London SW1P 4DU  
+44 (0) 20 7932 7600  
www.epr.co.uk

Lincoln House  
296-302 High Holborn  
WC1V 7JH London

Proposed First Floor Plan

| Project No.  | Originator | Zone | Level | Type | Role | Number | Rev |
|--------------|------------|------|-------|------|------|--------|-----|
| 10323-EPR-00 | 00         | 01   | DR    | A    | 0241 | 6      |     |



Keyplan

North

1 0 1 2 3 4 5  
SCALE 1:100  
m

| No. | Revision  | Date     | Initial | Chk'd |
|-----|---|----------|---------|-------|
| 6   | PLANNING ISSUE                                  | 28.02.18 | BH      | BH    |
| 5   | PRE-APP 3 Issue                                 | 21.02.18 | BH      | BH    |
| 4   | PRE-APP 2 Issue                                 | 17.02.17 | BH      | BH    |
| 3   | Plans updated to reflect MEP and layout changes | 09.01.17 | BH      | BH    |
| 2   | Rear facade updated to reflect CSE comments     | 05.12.16 | BH      | BH    |
| 1   | Plans Updated following Planners feedback       | 25.11.16 | BH      | BH    |

Notes:

1. Do not scale.
2. Contractor to Check all dimensions and report omissions and errors to the Architect.
3. EPR Architects accepts no liability for use of this drawing by parties other than the party for whom it was prepared or for purposes other than those for which it was prepared.
4. This drawing is issued in dwg/dgn format as an uncontrolled version to enable the recipient to prepare their own documents/drawings/models for which they are solely responsible. This drawing is based on project information current at the time of issue. EPR Architects Limited accepts no liability for any alterations or additions to or discrepancies arising out of any changes to such project information that occurs to the information after it is issued by EPR Architects Limited.
5. This drawing does not contain shared coordinates and is not issued for coordination purposes.

PLANNING

**EPR**  
architects

30 Millbank  
London SW1P 4DU  
+44 (0) 20 7932 7600  
www.epr.co.uk

Lincoln House  
296-302 High Holborn  
WC1V 7JH London

Proposed Second Floor Plan

|                           |            |          |       |      |      |        |     |
|---------------------------|------------|----------|-------|------|------|--------|-----|
| For Planning              | 1:100 @ A1 | 25.10.16 |       |      |      |        |     |
| Project No.               | Originator | Zone     | Level | Type | Role | Number | Rev |
| 10323-EPR-00-02-DR-A-0242 |            |          |       |      |      |        | 6   |

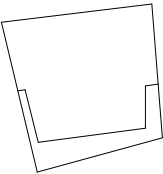


KEY

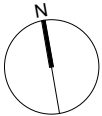
- Office
- WCs
- Potential Lobby Area

PLANNING

Keyplan



North



| No. | Revision  | Date     | Initial | Chk'd |
|-----|---|----------|---------|-------|
| 6   | PLANNING ISSUE                                  | 26.02.18 | BH      | BH    |
| 5   | PRE-APP 3 Issue                                 | 21.02.18 | BH      | JB    |
| 4   | PRE-APP 2 Issue                                 | 17.02.17 | BH      | BH    |
| 3   | Plans updated to reflect MEP and layout changes | 09.01.17 | BH      |       |
| 2   | Rear facade updated to reflect CSE comments     | 05.12.16 | BH      | BH    |
| 1   | Plans Updated following Planners feedback       | 25.11.16 | BH      | BH    |

19/03/2018 14:30:59

- Notes:
1. Do not scale.
  2. Contractor to Check all dimensions and report omissions and errors to the Architect.
  3. EPR Architects accepts no liability for use of this drawing by parties other than the party for whom it was prepared or for purposes other than those for which it was prepared.
  4. This drawing is issued in dwg/dgn format as an uncontrolled version to enable the recipient to prepare their own documents/drawings/models for which they are solely responsible. This drawing is based on project information current at the time of issue. EPR Architects Limited accepts no liability for any alterations or additions to or discrepancies arising out of any change to such project information that occurs to the information after it is issued by EPR Architects Limited.
  5. This drawing does not contain shared coordinates and is not issued for coordination purposes.

**EPR**  
architects

30 Millbank  
London SW1P 4DU  
+44 (0) 20 7932 7600  
www.epr.co.uk

Lincoln House  
296-302 High Holborn  
WC1V 7JH London

Proposed Third Floor Plan

For Planning 25.10.16

| Project No.  | Originator | Zone | Level | Type | Role | Number | Rev |
|--------------|------------|------|-------|------|------|--------|-----|
| 10323-EPR-00 | 03         | DR   | A     | 0243 |      |        | 6   |



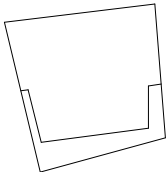


KEY

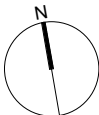
- Office
- WCs
- Potential Lobby Area

PLANNING

Keyplan



North



| No. | Revision  | Date     | Initial | Chk'd |
|-----|---|----------|---------|-------|
| 6   | PLANNING ISSUE                                  | 26.02.18 | BH      | BH    |
| 5   | PRE-APP 3 Issue                                 | 21.02.18 | BH      | JB    |
| 4   | PRE-APP 2 Issue                                 | 17.02.17 | BH      | BH    |
| 3   | Plans updated to reflect MEP and layout changes | 09.01.17 | BH      |       |
| 2   | WIP Model Issue for Information                 | 09.12.16 | JGR     |       |
| 1   | Plans Updated following Planners feedback       | 25.11.16 | BH      | BH    |

|                     |  |  |  |  |
|---------------------|--|--|--|--|
| 19/03/2018 14:31:04 |  |  |  |  |
|---------------------|--|--|--|--|

- Notes:
1. Do not scale.
  2. Contractor to Check all dimensions and report omissions and errors to the Architect.
  3. EPR Architects accepts no liability for use of this drawing by parties other than the party for whom it was prepared or for purposes other than those for which it was prepared.
  4. This drawing is issued in dwg/dgn format as an uncontrolled version to enable the recipient to prepare their own documents/drawings/models for which they are solely responsible. This drawing is based on project information current at the time of issue. EPR Architects Limited accepts no liability for any alterations or additions to or discrepancies arising out of any change to such project information that occurs to the information after it is issued by EPR Architects Limited.
  5. This drawing does not contain shared coordinates and is not issued for coordination purposes.

**EPR**  
architects

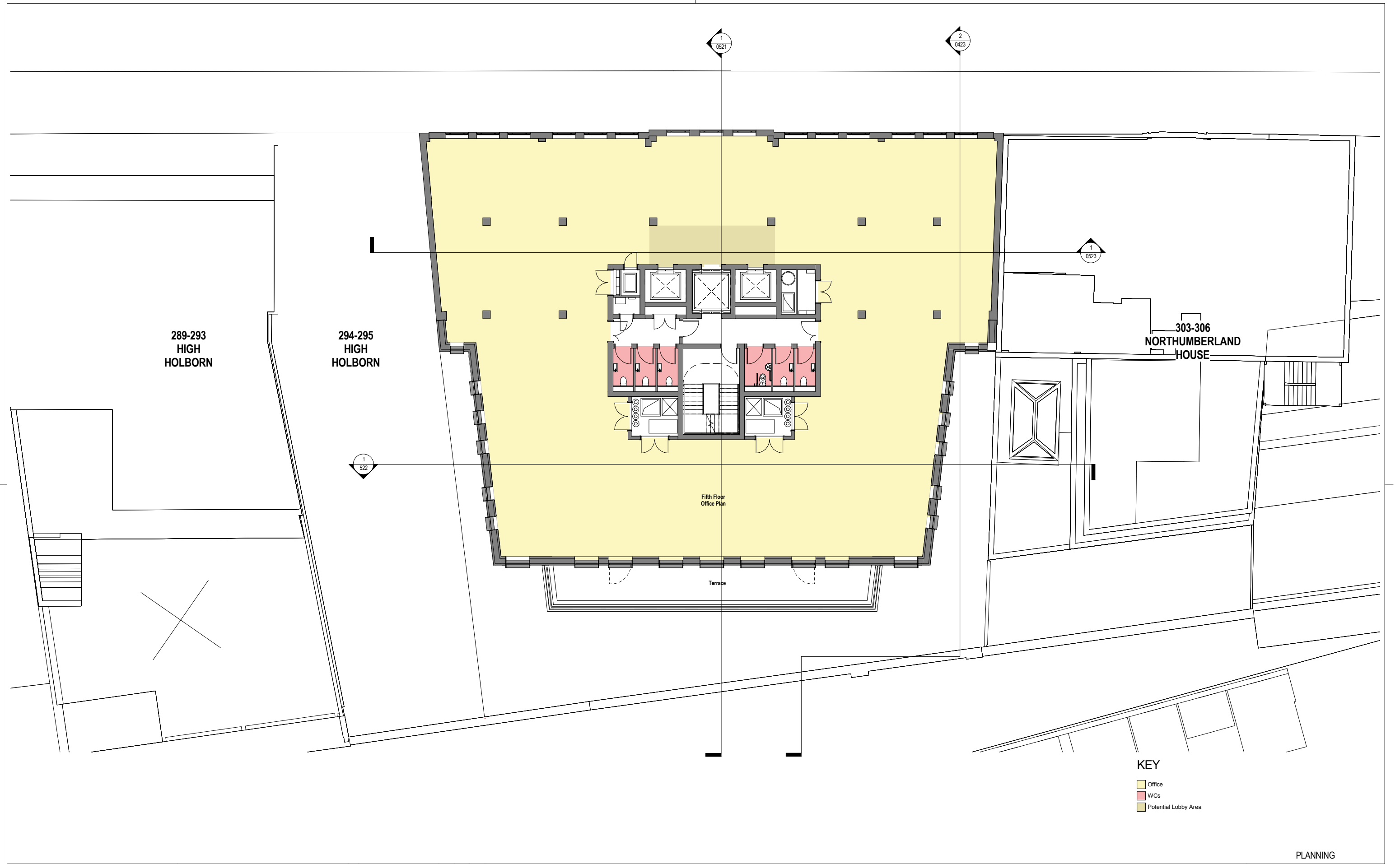
30 Millbank  
London SW1P 4DU  
+44 (0) 20 7932 7600  
www.epr.co.uk

Lincoln House  
296-302 High Holborn  
WC1V 7JH London

Proposed Fourth Floor Plan

For Planning 1 : 100 @ A1 25.10.16

| Project No.  | Originator | Zone | Level | Type | Role | Number | Rev |
|--------------|------------|------|-------|------|------|--------|-----|
| 10323-EPR-00 | 04         | DR   | A     | 0244 |      | 6      |     |

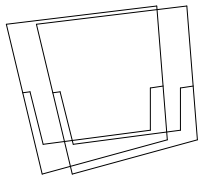


KEY

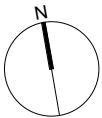
- Office
- WCs
- Potential Lobby Area

PLANNING

Keyplan



North



| No. | Revision  | Date     | Initial | Chk'd |
|-----|---|----------|---------|-------|
| 6   | PLANNING ISSUE                                  | 26.02.18 | BH      | BH    |
| 5   | PRE-APP 3 Issue                                 | 21.02.18 | BH      | BH    |
| 4   | PRE-APP 2 Issue                                 | 17.02.17 | BH      | BH    |
| 3   | Plans updated to reflect MEP and layout changes | 09.01.17 | BH      | BH    |
| 2   | MRP Model Issue for Information                 | 09.12.16 | JGR     | BH    |
| 1   | Plans Updated following Planners feedback       | 25.11.16 | BH      | BH    |

19/03/2018 14:31:09

Notes:  
1. Do not scale.  
2. Contractor to Check all dimensions and report omissions and errors to the Architect.  
3. EPR Architects accepts no liability for use of this drawing by parties other than the party for whom it was prepared or for purposes other than those for which it was prepared.  
4. This drawing is issued in dwg/dgn format as an uncontrolled version to enable the recipient to prepare their own documents/drawings/models for which they are solely responsible. This drawing is based on project information current at the time of issue. EPR Architects Limited accepts no liability for any alterations or additions to or discrepancies arising out of any change to such project information that occurs to the information after it is issued by EPR Architects Limited.  
5. This drawing does not contain shared coordinates and is not issued for coordination purposes.

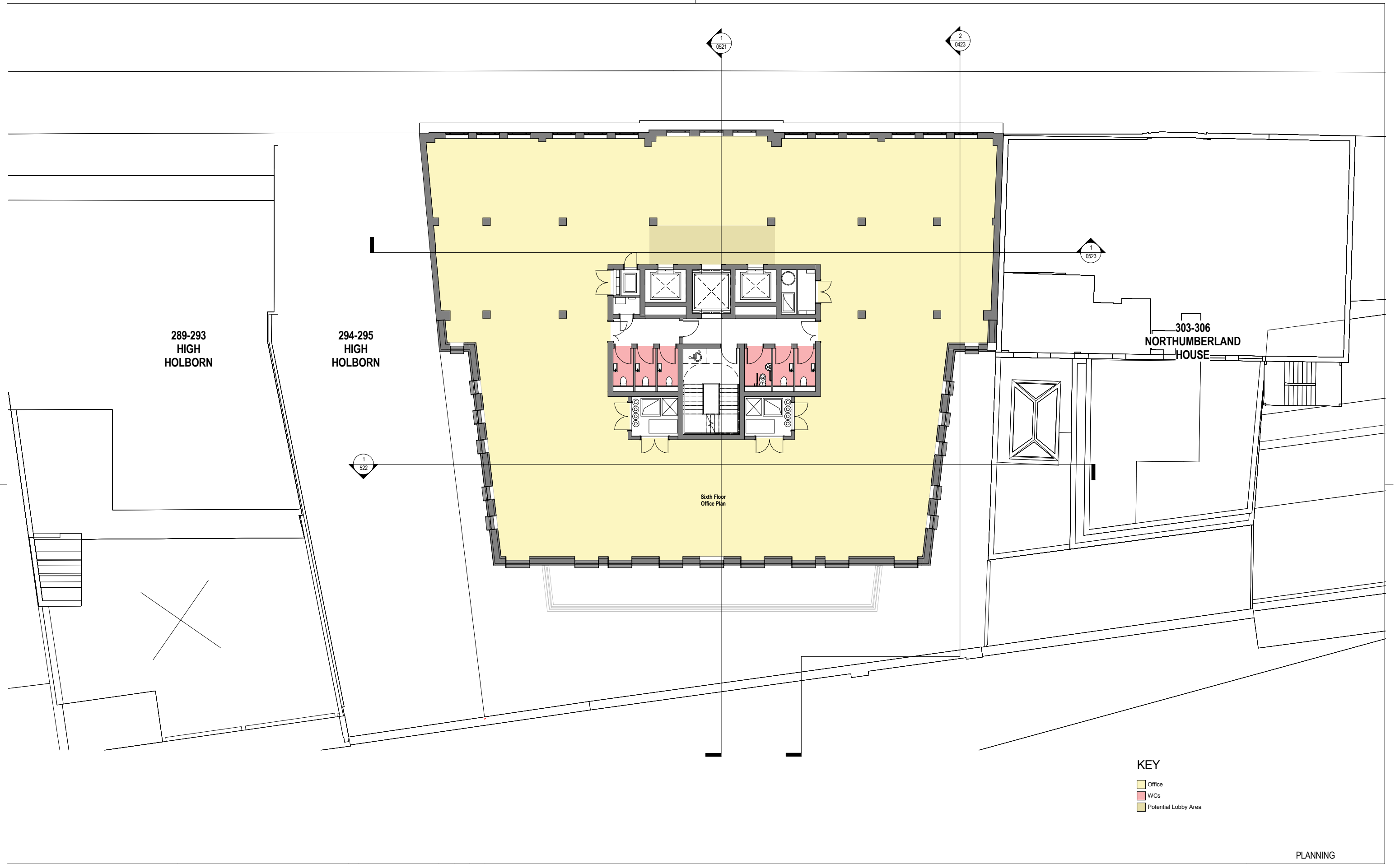
**EPR**  
architects  
30 Millbank  
London SW1P 4DU  
+44 (0) 20 7932 7600  
www.epr.co.uk

Lincoln House  
296-302 High Holborn  
WC1V 7JH London

Proposed Fifth Floor Plan

For Planning 1 : 100 @ A1 25.10.16

| Project No   | Originator | Zone | Level | Type | Role | Number | Rev |
|--------------|------------|------|-------|------|------|--------|-----|
| 10323-EPR-00 | 05         | DR   | A     | 0245 |      | 6      |     |

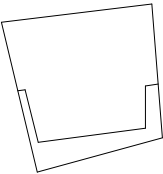


KEY

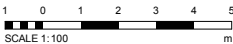
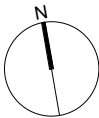
- Office
- WCs
- Potential Lobby Area

PLANNING

Keyplan



North



| No. | Revision  | Date     | Initial | Chk'd |
|-----|---|----------|---------|-------|
| 6   | PLANNING ISSUE                                  | 28.02.18 | BH      | BH    |
| 5   | PRE-APP 3 Issue                                 | 21.02.18 | BH      | JB    |
| 4   | PRE-APP 2 Issue                                 | 17.02.17 | BH      | BH    |
| 3   | Plans updated to reflect MEP and layout changes | 09.01.17 | BH      |       |
| 2   | Rear facade updated to reflect CSE comments     | 05.12.16 | BH      | BH    |
| 1   | Plans Updated following Planners feedback       | 25.11.16 | BH      | BH    |

19/03/2018 14:31:14

- Notes:
1. Do not scale
  2. Contractor to Check all dimensions and report omissions and errors to the Architect
  3. EPR Architects accepts no liability for use of this drawing by parties other than the party for whom it was prepared or for purposes other than those for which it was prepared.
  4. This drawing is issued in dwg/dgn format as an uncontrolled version to enable the recipient to prepare their own documents/drawings/models for which they are solely responsible. This drawing is based on project information current at the time of issue. EPR Architects Limited accepts no liability for any alterations or additions to or discrepancies arising out of any change to such project information that occurs to the information after it is issued by EPR Architects Limited.
  5. This drawing does not contain shared coordinates and is not issued for coordination purposes.

**EPR**  
architects

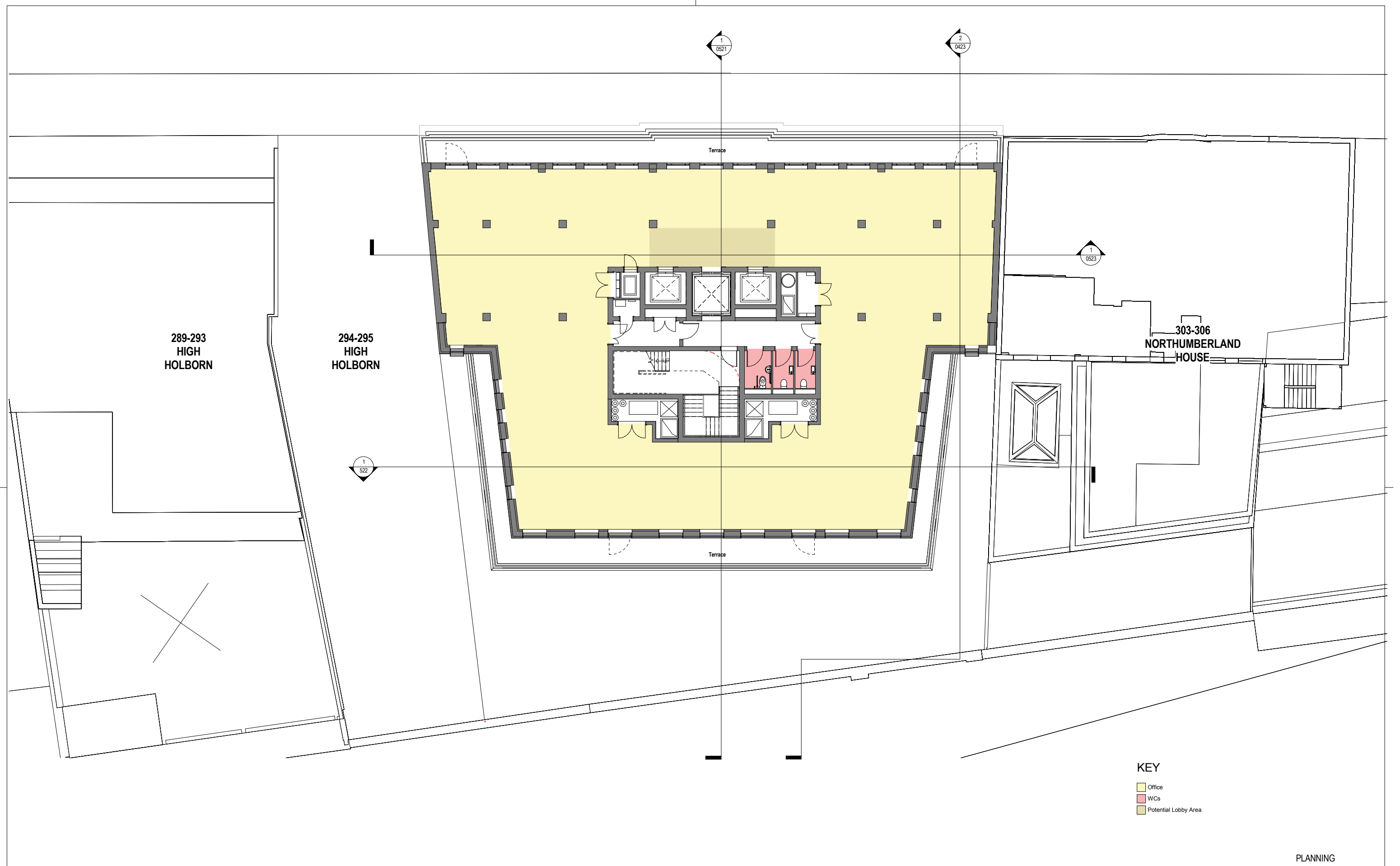
30 Millbank  
London SW1P 4DU  
+44 (0) 20 7932 7600  
www.epr.co.uk

Lincoln House  
296-302 High Holborn  
WC1V 7JH London

Proposed Sixth Floor Plan

For Planning 1 : 100 @ A1 25.10.16

| Project No   | Originator | Zone | Level | Type | Role | Number | Rev |
|--------------|------------|------|-------|------|------|--------|-----|
| 10323-EPR-00 | 06         | DR   | A     | 0246 |      |        | 6   |

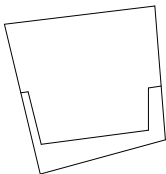


KEY

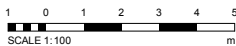
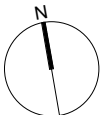
- Office
- WCs
- Potential Lobby Area

PLANNING

Keyplan



North



| No. | Revision  | Date     | Initial | Chk'd |
|-----|---|----------|---------|-------|
| 6   | PLANNING ISSUE                                  | 26.02.18 | BH      | BH    |
| 5   | PRE-APP 3 Issue                                 | 21.02.18 | BH      | JB    |
| 4   | PRE-APP 2 Issue                                 | 17.02.17 | BH      | BH    |
| 3   | Plans updated to reflect MEP and layout changes | 09.01.17 | BH      |       |
| 2   | WIP Model Issue for Information                 | 09.12.16 | JGR     |       |
| 1   | Plans Updated following Planners feedback       | 25.11.16 | BH      | BH    |

19/03/2018 14:31:20

- Notes:
1. Do not scale.
  2. Contractor to Check all dimensions and report omissions and errors to the Architect.
  3. EPR Architects accepts no liability for use of this drawing by parties other than the party for whom it was prepared or for purposes other than those for which it was prepared.
  4. This drawing is issued in dwg/dgn format as an uncontrolled version to enable the recipient to prepare their own documents/drawings/models for which they are solely responsible. This drawing is based on project information current at the time of issue. EPR Architects Limited accepts no liability for any alterations or additions to or discrepancies arising out of any change to such project information that occurs to the information after it is issued by EPR Architects Limited.
  5. This drawing does not contain shared coordinates and is not issued for coordination purposes.

**EPR**  
architects

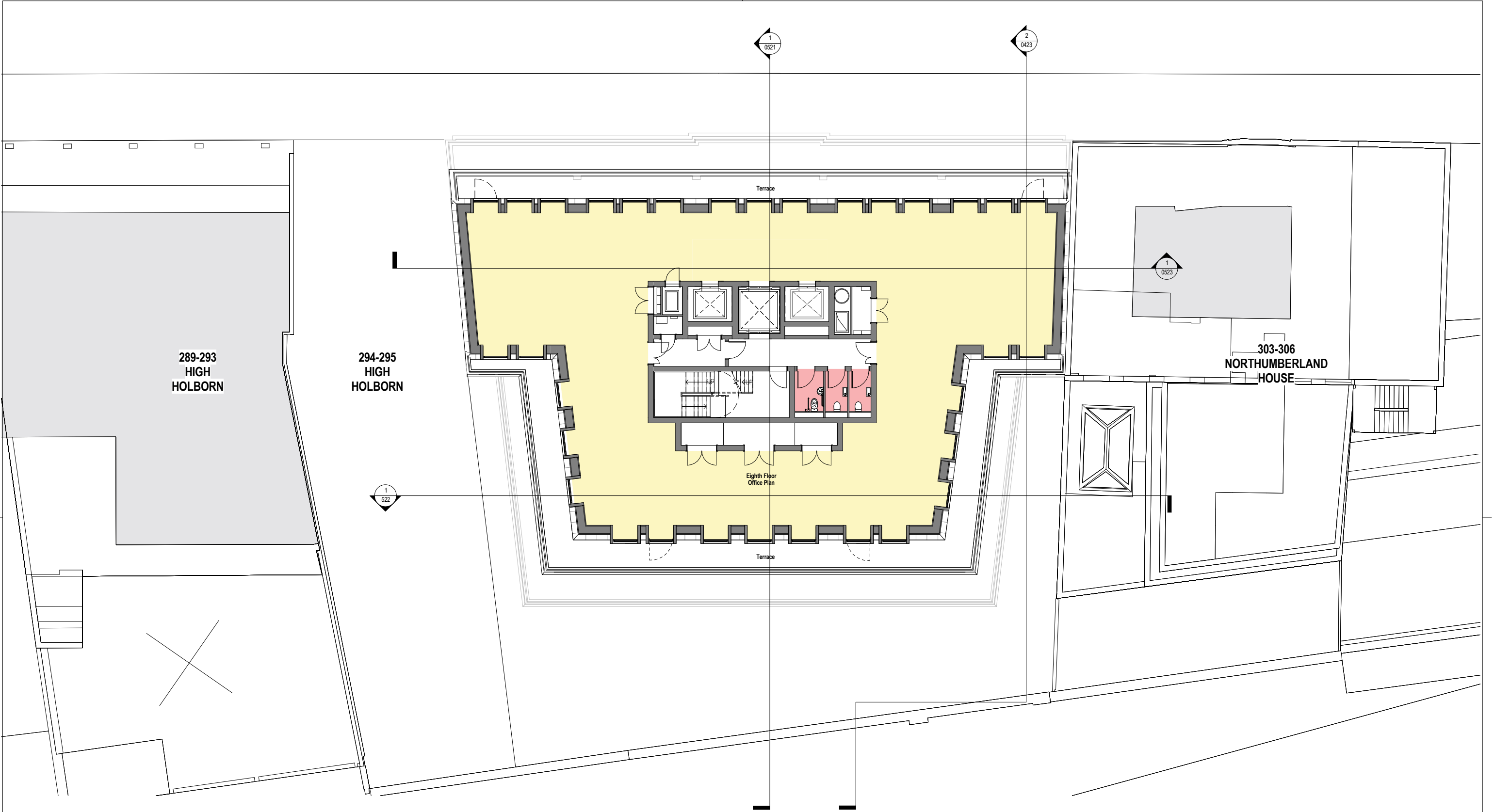
30 Millbank  
London SW1P 4DU  
+44 (0) 20 7932 7600  
www.epr.co.uk

Lincoln House  
296-302 High Holborn  
WC1V 7JH London

Proposed Seventh Floor Plan

For Planning 1 : 100 @ A1 25.10.16

| Project No   | Originator | Zone | Level | Type | Role | Number | Rev |
|--------------|------------|------|-------|------|------|--------|-----|
| 10323-EPR-00 | 07         | DR   | A     | 0247 |      |        | 6   |

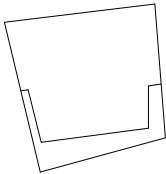


KEY

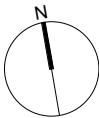
- Office
- WCs

PRELIMINARY

Keyplan



North



| No. | Revision  | Date     | Initial | Chk'd |
|-----|---|----------|---------|-------|
| 7   | PLANNING ISSUE                                  | 28.02.18 | BH      | BH    |
| 6   | PRE-APP 3 Issue                                 | 21.02.18 | BH      | JB    |
| 5   | PRE-APP 2 Issue                                 | 17.02.17 | BH      | BH    |
| 4   | Plans updated to reflect MEP and layout changes | 09.01.17 | BH      |       |
| 3   | WIP Model Issue for Information                 | 09.12.16 | JGR     |       |
| 2   | Revised layout updated to reflect CSE comments  | 05.12.16 | BH      | BH    |
| 1   | Plans Updated following Planners feedback       | 25.11.16 | BH      | BH    |

Notes:  
1. Do not scale.  
2. Contractor to Check all dimensions and report omissions and errors to the Architect.  
3. EPR Architects accepts no liability for use of this drawing by parties other than the party for whom it was prepared or for purposes other than those for which it was prepared.  
4. This drawing is issued in dwg/dgn format as an uncontrolled version to enable the recipient to prepare their own documents/drawings/models for which they are solely responsible. This drawing is based on project information current at the time of issue. EPR Architects Limited accepts no liability for any alterations or additions to or discrepancies arising out of any change to such project information that occurs to the information after it is issued by EPR Architects Limited.  
5. This drawing does not contain shared coordinates and is not issued for coordination purposes.

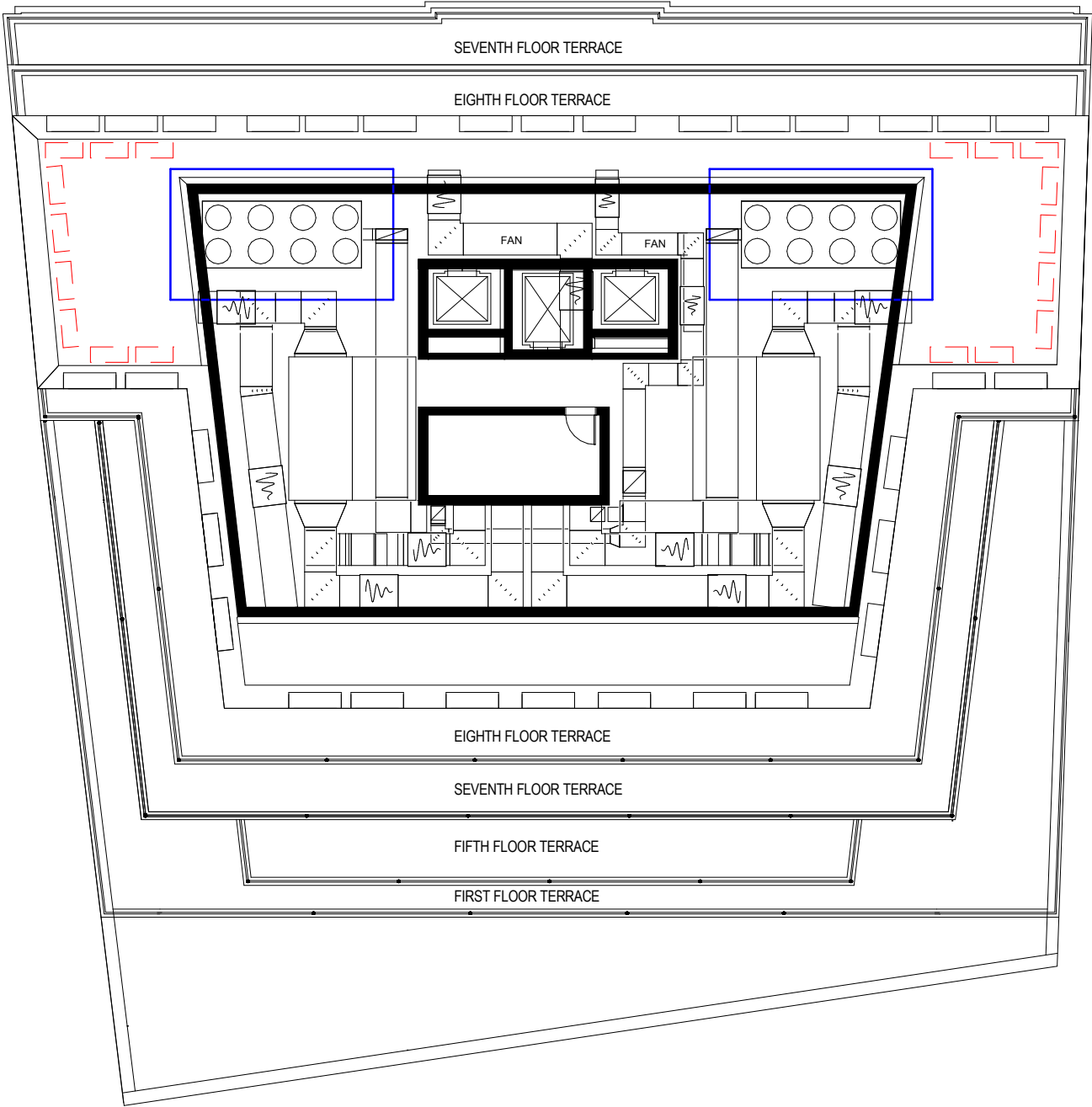
**EPR**  
architects

30 Millbank  
London SW1P 4DU  
+44 (0) 20 7932 7600  
www.epr.co.uk

**Lincoln House**  
296-302 High Holborn  
WC1V 7JH London

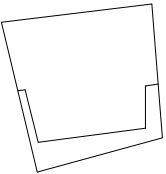
Proposed Eighth Floor Plan

|              |            |              |       |          |      |        |     |
|--------------|------------|--------------|-------|----------|------|--------|-----|
| For Planning |            | 1 : 100 @ A1 |       | 25.10.16 |      |        |     |
| Project No.  | Originator | Zone         | Level | Type     | Role | Number | Rev |
| 10323-EPR-00 | 08         | DR           | A     | 0248     |      | 7      |     |

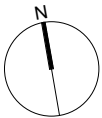


PLANNING

Keyplan



North



| No. | Revision                                   | Date     | Initial | Chk'd |
|-----|--|----------|---------|-------|
| 6   | PLANNING ISSUE                             | 26.02.18 | BH      | BH    |
| 5   | PRE-APP 3 Issue                            | 21.02.18 | BH      | JB    |
| 4   | PRE-APP 2 Issue                            | 17.02.17 | BH      | BH    |
| 3   | WIP Model Issue for Information            | 23.01.17 | JGR     | BH    |
| 2   | Rear facade updated to reflect GE comments | 05.12.16 | BH      | BH    |
| 1   | Plans Updated following Planners feedback  | 25.11.16 | BH      | BH    |

08/03/2018 13:57:15

- Notes:
1. Do not scale
  2. Contractor to Check all dimensions and report omissions and errors to the Architect
  3. EPR Architects accepts no liability for use of this drawing by parties other than the party for whom it was prepared or for purposes other than those for which it was prepared.
  4. This drawing is issued in dwg/dgn format as an uncontrolled version to enable the recipient to prepare their own documents/drawings/models for which they are solely responsible. This drawing is based on project information current at the time of issue. EPR Architects Limited accepts no liability for any alterations or additions to or discrepancies arising out of any change to such project information that occurs to the information after it is issued by EPR Architects Limited.
  5. This drawing does not contain shared coordinates and is not issued for coordination purposes.

**EPR**  
architects

30 Millbank  
London SW1P 4DU  
+44 (0) 20 7932 7600  
www.epr.co.uk

Lincoln House  
296-302 High Holborn  
WC1V-7JH London

Roof Top Plan

For Planning 1 : 100 @ A1 10/25/16

| Project No   | Originator | Zone | Level | Type | Role | Number | Rev |
|--------------|------------|------|-------|------|------|--------|-----|
| 10323-EPR-00 | 00         | 09   | DR    | A    | 0249 | 6      |     |





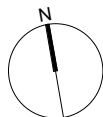


1 North Elevation  
1 : 100

PLANNING

Keyplan

North



1 0 1 2 3 4 5  
SCALE 1 : 100 m

| No. | Revision  | Date     | Initial | Chk'd |
|-----|---|----------|---------|-------|
| 5   | PLANNING ISSUE                                  | 28.02.18 | BH      | BH    |
| 4   | PRE-APP 2 Issue                                 | 17.02.17 | BH      | BH    |
| 3   | Plans updated to reflect MEP and layout changes | 09.01.17 | BH      | BH    |
| 2   | WIP Model Issue for Information                 | 09.12.16 | JGD     | BH    |
| 1   | Plans Updated following Planners feedback       | 25.11.16 | BH      | BH    |

19/03/2018 14:31:37

- 1 - Slatted louvered plant screen wall with grey finish to match mansard roof.
- 2 - Grey zinc standing seam mansard roof.
- 3 - Bronze metal cladding to dormer surround.
- 4 - Low iron glass with bronze railing.
- 5 - Bronze crittal frame with low iron glass infill panels.
- 6 - Portland stone.
- 7 - Decorative feature bronze anodized infill panels.
- 8 - Bronze anodized curtain walling with low iron glass infills.

- 9 - Bronze louver to match curtain walling finish.
- 10 - Full height, low iron glass doors.
- 11 - Multi stock brick.
- 12 - Bronze anodised window with projecting profile frame.
- 13 - Precast stone.
- 14 - Profiled section in stone.
- 15 - Bronze doors

Notes:  
1. Do not scale.  
2. Contractor to check all dimensions and report omissions and errors to the Architect.  
3. EPR Architects accepts no liability for use of this drawing by parties other than the party for whom it was prepared or for purposes other than those for which it was prepared.  
4. This drawing is issued in dwg/dgn format as an uncontrolled version to enable the recipient to prepare their own documents/drawings/models for which they are solely responsible. This drawing is based on project information current at the time of issue. EPR Architects Limited accepts no liability for any alterations or additions to or discrepancies arising out of any change to such project information that occurs to the information after it is issued by EPR Architects Limited.  
5. This drawing does not contain shared coordinates and is not issued for coordination purposes.

**EPR**  
architects  
30 Millbank  
London SW1P 4DU  
+44 (0) 20 7932 7600  
www.epr.co.uk

Lincoln House  
296-302 High Holborn  
WC1V 7JH London

Proposed North Elevation

For Planning 1 : 100 @ A1 11/22/16

| Project No   | Originator | Zone | Level | Type | Role | Number | Rev |
|--------------|------------|------|-------|------|------|--------|-----|
| 10323-EPR-00 | NO         | DR   | A     | 0420 |      |        | 5   |

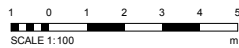
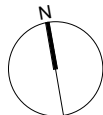


1 Elevation 0421-SO- Elevation  
1:100

PLANNING

Keyplan

North



| No. | Revision  | Date     | Initial | Chk'd |
|-----|---|----------|---------|-------|
| 6   | PLANNING ISSUE                                  | 28.02.18 | BH      | BH    |
| 5   | PRE-APP 3 Issue                                 | 21.02.18 | BH      | JB    |
| 4   | PRE-APP 2 Issue                                 | 17.02.17 | BH      | BH    |
| 3   | Plans updated to reflect MEP and layout changes | 09.01.17 | BH      |       |
| 2   | MRP Model Issue for Information                 | 09.12.16 | JGR     | BH    |
| 1   | Plans Updated following Planners feedback       | 25.11.16 | BH      | BH    |

19/03/2018 14:31:42

- 1 - Slatted louvered plant screen wall with grey finish to match mansard roof.
- 2 - Grey zinc standing seam mansard roof.
- 3 - Bronze metal cladding to dormer surround.
- 4 - Low iron glass with bronze railing.
- 5 - Bronze crital frame with low iron glass infill panels.
- 6 - Portland stone.
- 7 - Decorative feature bronze anodized infill panels.
- 8 - Bronze anodized curtain walling with low iron glass infills.

- 9 - Bronze louver to match curtain walling finish.
- 10 - Full height, low iron glass doors.
- 11 - Multi stock brick.
- 12 - Bronze anodised window with projecting profile frame.
- 13 - Precast stone.
- 14 - Profiled section in stone.
- 15 - Bronze doors

Notes:  
1. Do not scale.  
2. Contractor to Check all dimensions and report omissions and errors to the Architect.  
3. EPR Architects accepts no liability for use of this drawing by parties other than the party for whom it was prepared or for purposes other than those for which it was prepared.  
4. This drawing is issued in design format as an uncontrolled version to enable the recipient to prepare their own documents/drawings/models for which they are solely responsible. This drawing is based on project information current at the time of issue. EPR Architects Limited accepts no liability for any alterations or additions to or discrepancies arising out of any change to such project information that occurs to the information after it is issued by EPR Architects Limited.  
5. This drawing does not contain shared coordinates and is not issued for coordination purposes.

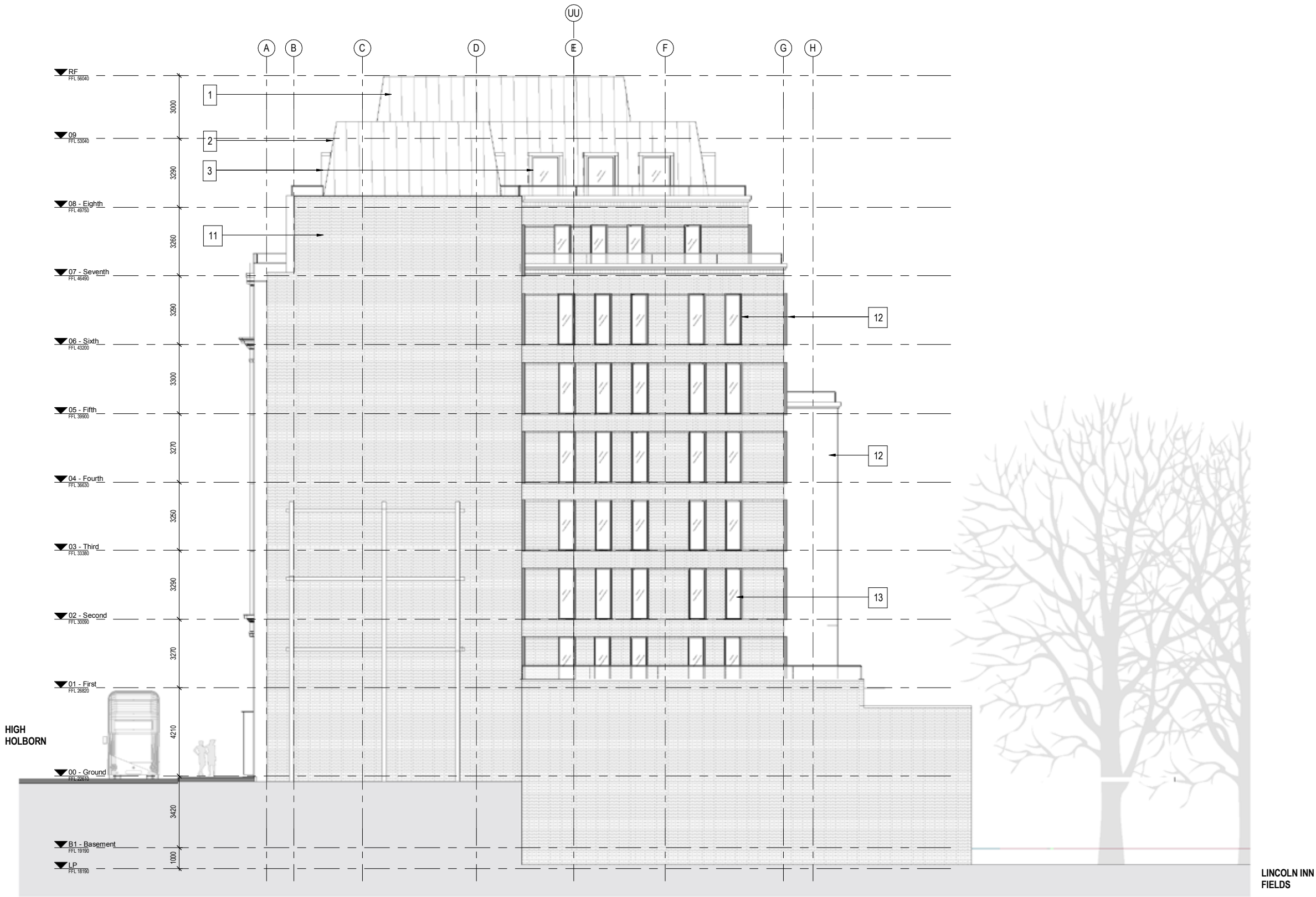
**EPR**  
architects  
30 Millbank  
London SW1P 4DU  
+44 (0) 20 7932 7600  
www.epr.co.uk

Lincoln House  
296-302 High Holborn  
WC1V-7JH London

Proposed South Elevation

For Planning 1:100 @ A1 11/22/16

| Project No   | Originator | Zone | Level | Type | Role | Number | Rev |
|--------------|------------|------|-------|------|------|--------|-----|
| 10323-EPR-00 | SO         | DR   | A     | 0421 |      |        | 6   |

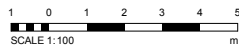
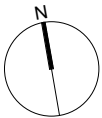


1 0422-WE-Elevation  
1 : 100

PLANNING

Keyplan

North



| No. | Revision  | Date     | Initial | Chk'd |
|-----|---|----------|---------|-------|
| 5   | PLANNING ISSUE                                  | 28.02.18 | BH      | BH    |
| 4   | PRE-APP 2 Issue                                 | 17.02.17 | BH      | BH    |
| 3   | Plans updated to reflect MEP and layout changes | 09.01.17 | BH      | BH    |
| 2   | WPP Model Issue for Information                 | 09.12.16 | JGR     | BH    |
| 1   | Plans Updated following Planners feedback       | 25.11.16 | BH      | BH    |

19/03/2018 14:31:48

- 1 - Slatted louvered plant screen wall with grey finish to match mansard roof.
- 2 - Grey zinc standing seam mansard roof.
- 3 - Bronze metal cladding to dormer surround.
- 4 - Low iron glass with bronze railing.
- 5 - Bronze crital frame with low iron glass infill panels.
- 6 - Portland stone.
- 7 - Decorative feature bronze anodized infill panels.
- 8 - Bronze anodized curtain walling with low iron glass infills.

- 9 - Bronze louver to match curtain walling finish.
- 10 - Full height, low iron glass doors.
- 11 - Multi stock brick.
- 12 - Bronze anodised window with projecting profile frame.
- 13 - Precast stone.
- 14 - Profiled section in stone.
- 15 - Bronze doors

Notes:  
1. Do not scale.  
2. Contractor to Check all dimensions and report omissions and errors to the Architect.  
3. EPR Architects accepts no liability for use of this drawing by parties other than the party for whom it was prepared or for purposes other than those for which it was prepared.  
4. This drawing is issued in dwg/dgn format as an uncontrolled version to enable the recipient to prepare their own documents/drawings/models for which they are solely responsible. This drawing is based on project information current at the time of issue. EPR Architects Limited accepts no liability for any alterations or additions to or discrepancies arising out of any change to such project information that occurs to the information after it is issued by EPR Architects Limited.  
5. This drawing does not contain shared coordinates and is not issued for coordination purposes.

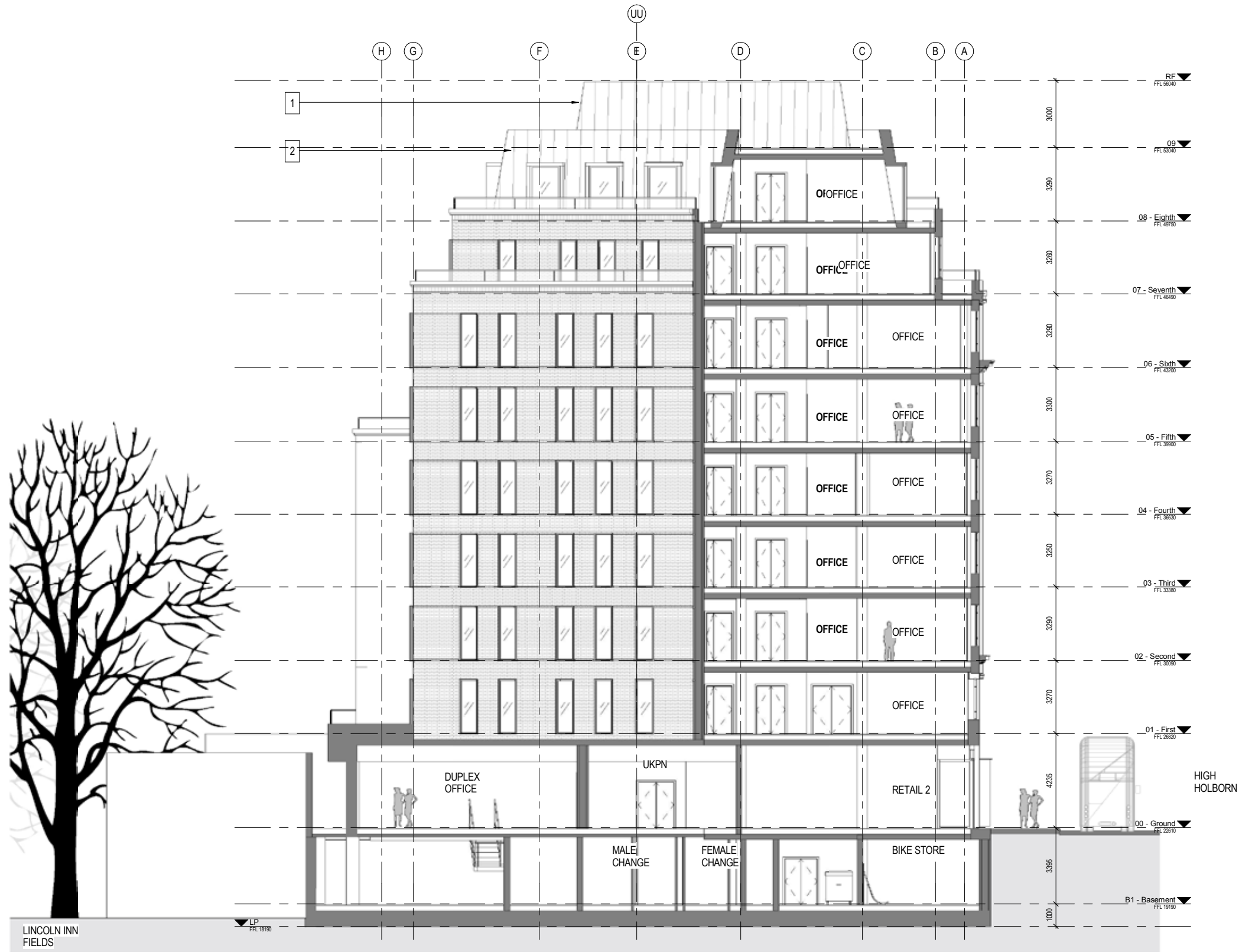
**EPR**  
architects  
30 Millbank  
London SW1P 4DU  
+44 (0) 20 7932 7600  
www.epr.co.uk

Lincoln House  
296-302 High Holborn  
WC1V 7JH London

Proposed West Elevation

| Project No   | Originator | Zone | Level | Type  | Role | Number | Rev |
|--------------|------------|------|-------|-------|------|--------|-----|
| 10323-EPR-00 | -WE        | -DR  | -A    | -0422 |      | 5      |     |



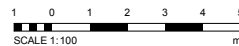
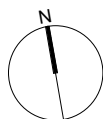


2  
0239  
Section 1  
1:100

PLANNING

Keyplan

North



| No. | Revision  | Date     | Initial | Chk'd |
|-----|---|----------|---------|-------|
| 6   | PLANNING ISSUE                                  | 28.02.18 | BH      | BH    |
| 5   | PRE-APP 3 Issue                                 | 21.02.18 | BH      | BH    |
| 4   | PRE-APP 2 Issue                                 | 17.02.17 | BH      | BH    |
| 3   | Plans updated to reflect MEP and layout changes | 09.01.17 | BH      | BH    |
| 2   | WIP Model Issue for Information                 | 09.12.16 | JGR     | BH    |
| 1   | Plans Updated following Planners feedback       | 25.11.16 | BH      | BH    |

19/03/2018 14:31:50

- 1 - Slatted louvered plant screen wall with grey finish to match mansard roof.
- 2 - Grey zinc standing seam mansard roof.
- 3 - Bronze metal cladding to dormer surround.
- 4 - Low iron glass with bronze railing.
- 5 - Bronze crital frame with low iron glass infill panels.
- 6 - Portland stone.
- 7 - Decorative feature bronze anodized infill panels.
- 8 - Bronze anodized curtain walling with low iron glass infills.

- 9 - Bronze louver to match curtain walling finish.
- 10 - Full height, low iron glass doors.
- 11 - Multi stock brick.
- 12 - Bronze anodised window with projecting profile frame.
- 13 - Precast stone.
- 14 - Profiled section in stone.
- 15 - Bronze doors

Notes:  
1. Do not scale.  
2. Contractor to check all dimensions and report omissions and errors to the Architect.  
3. EPR Architects accepts no liability for use of this drawing by parties other than the party for whom it was prepared or for purposes other than those for which it was prepared.  
4. This drawing is issued in dwg/dgn format as an uncontrolled version to enable the recipient to prepare their own documents/drawings/models for which they are solely responsible. This drawing is based on project information current at the time of issue. EPR Architects Limited accepts no liability for any alterations or additions to or discrepancies arising out of any change to such project information that occurs to the information after it is issued by EPR Architects Limited.  
5. This drawing does not contain shared coordinates and is not issued for coordination purposes.

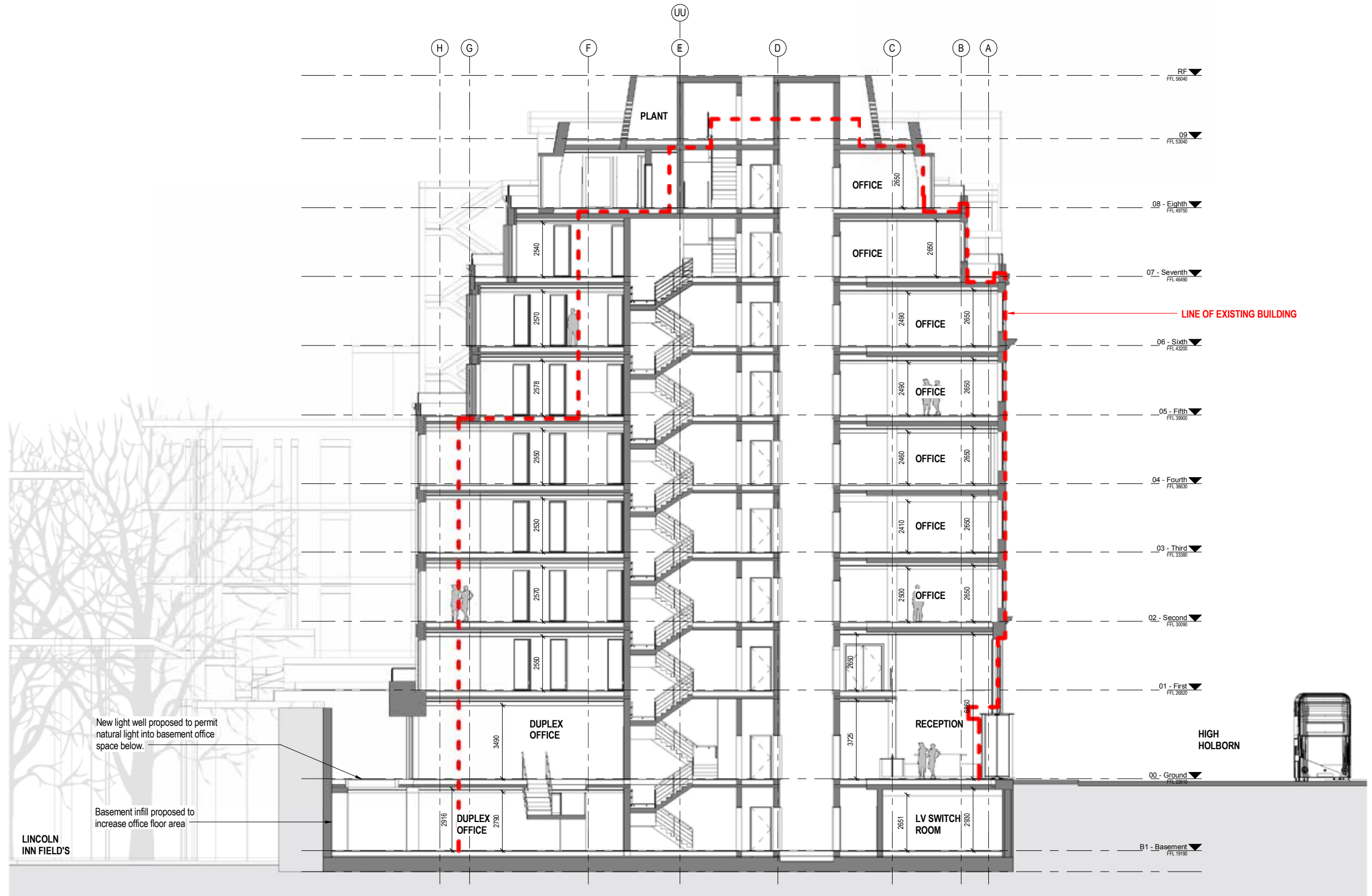
**EPR**  
architects  
30 Millbank  
London SW1P 4DU  
+44 (0) 20 7932 7600  
www.epr.co.uk

Lincoln House  
296-302 High Holborn  
WC1V 7JH London

Proposed East Elevation

For Planning 1:100 @ A1 11/22/16

| Project No.  | Originator | Zone | Level | Type | Role | Number | Rev |
|--------------|------------|------|-------|------|------|--------|-----|
| 10323-EPR-00 | EA         | DR   | A     | 0423 |      | 6      |     |

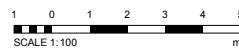
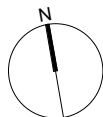


1 521-Section-A-A  
0239 1:100

PLANNING

Keyplan

North



| No.                 | Revision        | Date     | Initial | Chk'd |
|---------------------|-----------------|----------|---------|-------|
| 2                   | PLANNING ISSUE  | 28.02.18 | BH      | BH    |
| 1                   | PRE-APP 2 Issue | 17.02.17 | BH      | BH    |
| 19/03/2018 14:32:01 |                 |          |         |       |

- Notes:
1. Do not scale.
  2. Contractor to Check all dimensions and report omissions and errors to the Architect.
  3. EPR Architects accepts no liability for use of this drawing by parties other than the party for whom it was prepared or for purposes other than those for which it was prepared.
  4. This drawing is issued in dwg/dgn format as an uncontrolled version to enable the recipient to prepare their own documents/drawings/models for which they are solely responsible. This drawing is based on project information current at the time of issue. EPR Architects Limited accepts no liability for any alterations or additions to or discrepancies arising out of any change to such project information that occurs to the information after it is issued by EPR Architects Limited.
  5. This drawing does not contain shared coordinates and is not issued for coordination purposes.

**EPR**  
architects

30 Millbank  
London SW1P 4DU  
+44 (0) 20 7932 7600  
www.epr.co.uk

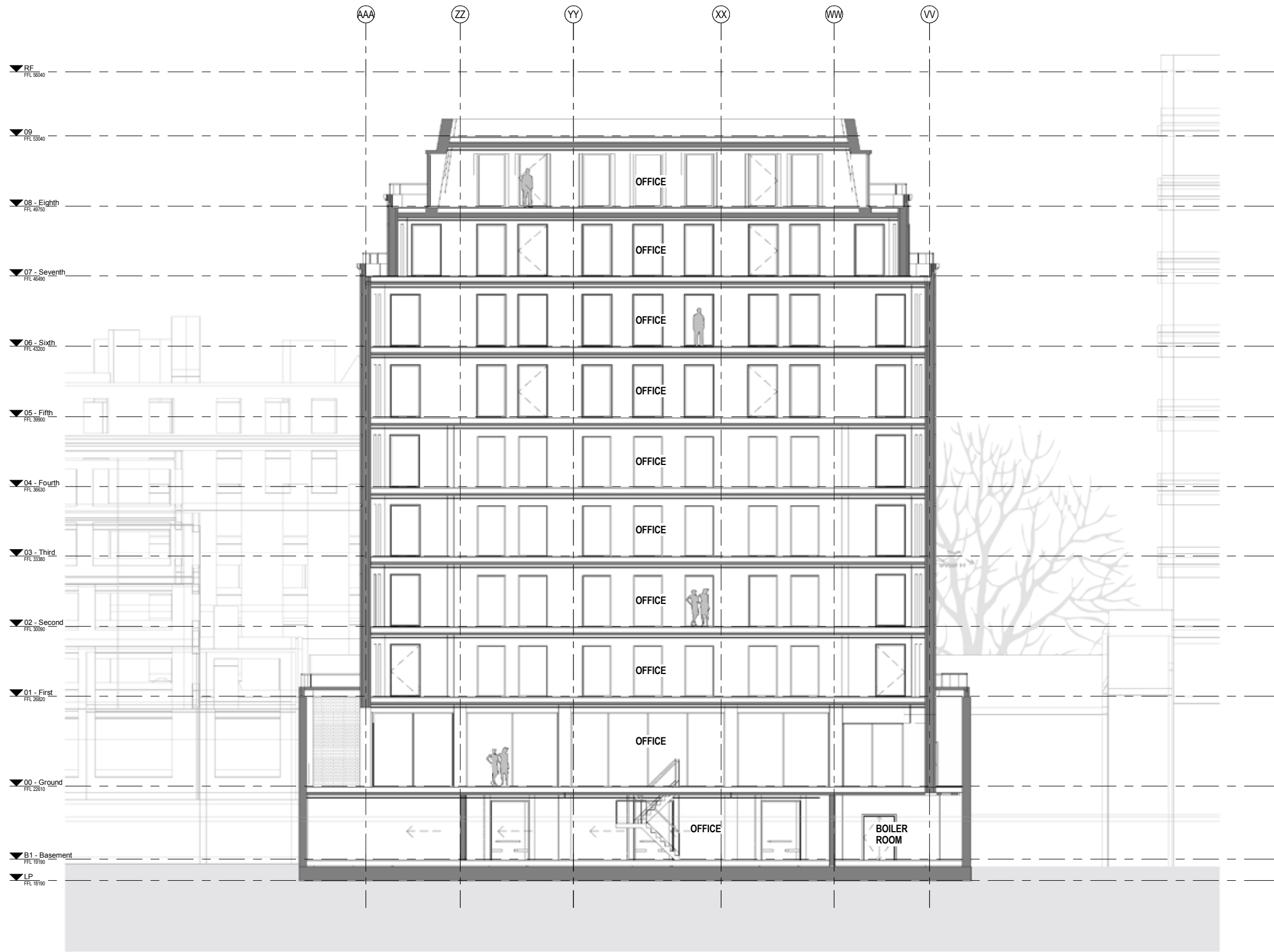
Lincoln House  
296-302 High Holborn  
WC1V 7JH London

Proposed Section A-A

For Planning 1:100 @ A1 24.10.16

| Project No.  | Originator | Zone | Level | Type | Role | Number | Rev |
|--------------|------------|------|-------|------|------|--------|-----|
| 10323-EPR-00 | AA         | DR   | A     | 0521 |      | 2      |     |





1  
0239  
522-Section-B-B  
1 : 100

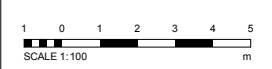
PLANNING

Keyplan

North

|   |                 |          |    |    |
|---|-----------------|----------|----|----|
| 3 | PLANNING ISSUE  | 28.02.18 | BH | BH |
| 2 | PRE-APP 3 Issue | 21.02.18 | BH | AB |
| 1 | PRE-APP 2 Issue | 17.02.17 | BH | BH |

| No.        | Revision | Date | Initial | Chk'd |
|------------|----------|------|---------|-------|
| 19/03/2018 | 14.32.10 |      |         |       |



Notes:  
1. Do not scale.  
2. Contractor to Check all dimensions and report omissions and errors to the Architect.  
3. EPR Architects accepts no liability for use of this drawing by parties other than the party for whom it was prepared or for purposes other than those for which it was prepared.  
4. This drawing is issued in dwg/dgn format as an uncontrolled version to enable the recipient to prepare their own documents/drawings/models for which they are solely responsible. This drawing is based on project information current at the time of issue. EPR Architects Limited accepts no liability for any alterations or additions to or discrepancies arising out of any change to such project information that occurs to the information after it is issued by EPR Architects Limited.  
5. This drawing does not contain shared coordinates and is not issued for coordination purposes.

**EPR**  
architects

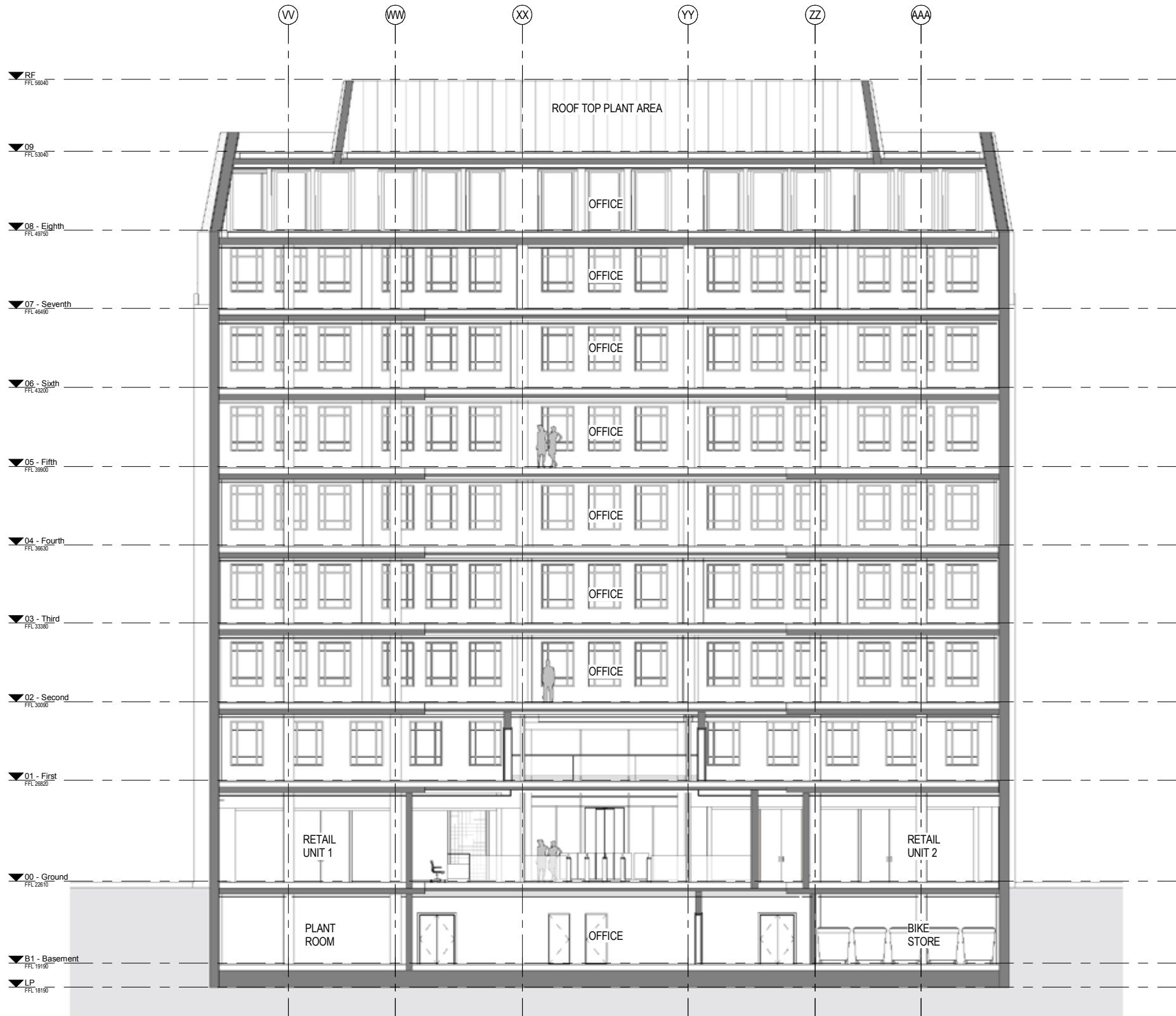
30 Millbank  
London SW1P 4DU  
+44 (0) 20 7932 7600  
www.epr.co.uk

Lincoln House  
296-302 High Holborn  
WC1V-7JH London

Proposed Section B-B

For Planning1 : 100 @ A101/31/17

|              |            |      |       |      |      |        |     |
|--------------|------------|------|-------|------|------|--------|-----|
| Project No   | Originator | Zone | Level | Type | Role | Number | Rev |
| 10323-EPR-00 | BB         | DR   | A     | 522  |      | 3      |     |

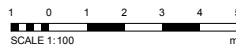
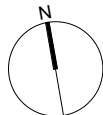


1 523-Section-C-C  
0239 1:100

PLANNING

Keyplan

North



| No. | Revision        | Date     | Initial | Chk'd |
|-----|-----------------|----------|---------|-------|
| 3   | PLANNING ISSUE  | 28.02.18 | BH      | BH    |
| 2   | PRE-APP 3 issue | 21.02.18 | BH      | AB    |
| 1   | PRE-APP 2 issue | 17.02.17 | BH      | BH    |

Notes:  
1. Do not scale.  
2. Contractor to Check all dimensions and report omissions and errors to the Architect.  
3. EPR Architects accepts no liability for use of this drawing by parties other than the party for whom it was prepared or for purposes other than those for which it was prepared.  
4. This drawing is issued in dwg/dgn format as an uncontrolled version to enable the recipient to prepare their own documents/drawings/models for which they are solely responsible. This drawing is based on project information current at the time of issue. EPR Architects Limited accepts no liability for any alterations or additions to or discrepancies arising out of any change to such project information that occurs to the information after it is issued by EPR Architects Limited.  
5. This drawing does not contain shared coordinates and is not issued for coordination purposes.

**EPR**  
architects  
30 Millbank  
London SW1P 4DU  
+44 (0) 20 7932 7600  
www.epr.co.uk

Lincoln House  
296-302 High Holborn  
WC1V-7JH London

Proposed Section C-C

For Planning 1:100 @ A1 02/20/17

| Project No   | Originator | Zone | Level | Type | Role | Number | Rev |
|--------------|------------|------|-------|------|------|--------|-----|
| 10323-EPR-00 | -C-C-      | DR   | -A-   | 0523 |      | 3      |     |

