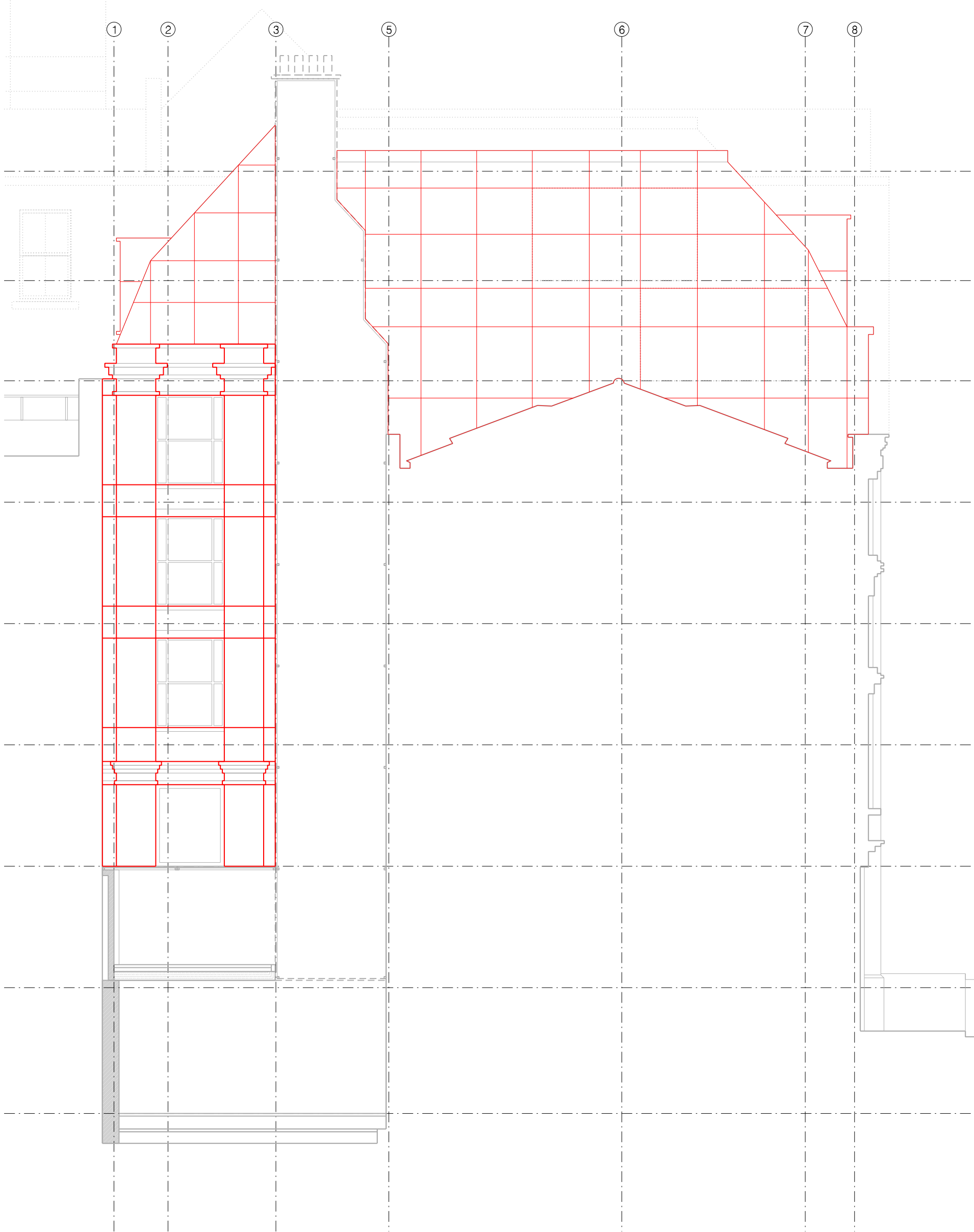


REVISION:	PURPOSE:	DATE:	SCALE:
A	ISSUED FOR PLANNING - SUPPLEMENTARY INFORMATION FOR FULL APPLICATION	25.06.18	As 1:50 @ As 1:100
	<p>1. Comments are not to delete, mark, affect, change. Discrepancies should be referred from the Engineer/Architect to the relevant authority.</p> <p>2. The design and construction must be in accordance with the relevant authority.</p> <p>3. The design and construction must be in accordance with the relevant authority.</p> <p>4. The design and construction must be in accordance with the relevant authority.</p> <p>5. The design and construction must be in accordance with the relevant authority.</p>		
	GROUPWORK	CLIENT:	PROJECT:
	15 CLEMMENWELL CLOSE, LONDON, EC1N 0JA	SEAFORTH LAND HOLDINGS LTD	20 - 23 GREVILLE STREET, LONDON, EC1N 8SS
			DWD TITLE: PROPOSED EAST ELEVATION - PANEL SUBDIVISION DWD No: 248 - 613 REVISION: A DATE: JUNE 2018 PURPOSE OF ISSUE: P DB: AC CB: AT



① PROPOSED EAST ELEVATION – PANEL SUBDIVISION