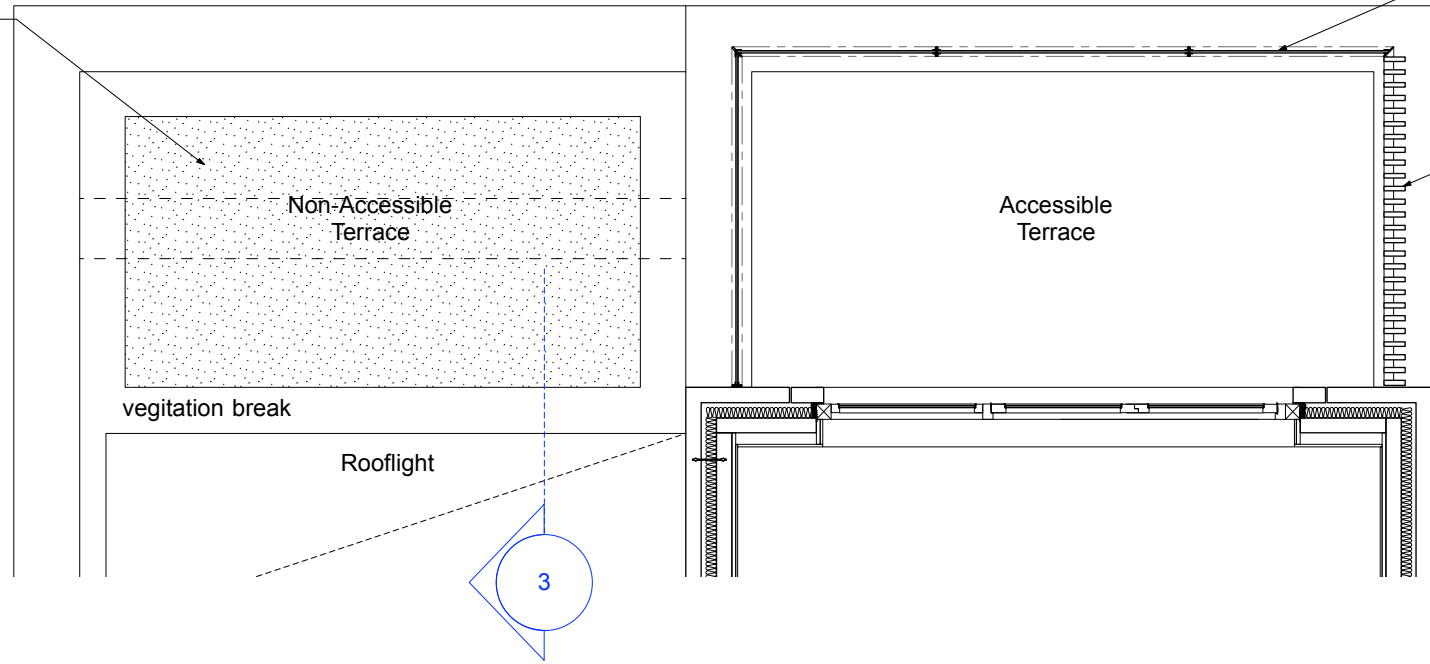


1 Ground Floor Plan
Scale: 1:200

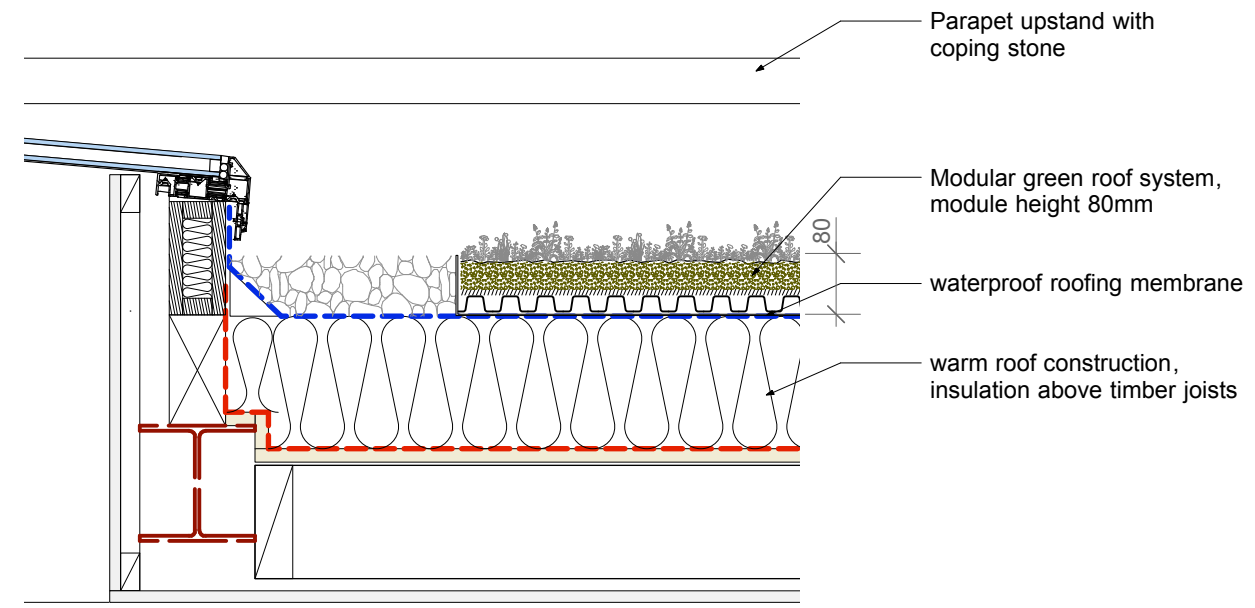
Modular green roof system for Sedum green roof

Sedum Layer: 8-10 species of sedum are employed, grown for nodules to become well rooted. The trays are supplied with 80% minimum coverage, in accordance with the suppliers recommendations.

For further information refer to the supplied specification sheet and sedum species list.



2 GF Terrace Plan
Scale: 1:50



3 GF Terrace Section
Scale: 1:10

MODULAR GREEN ROOF SYSTEM

The module comprises four layers (**Drainage, Filter, Substrate & Sedum**), as stated in the manufacturers specification sheets.

Drainage Layer:
The excess water that cannot be absorbed by the cassette can be easily discharged through the drainage system. The water storage layer contains four drainage holes on the top and bottom of each cavity. Rainwater is buffered through a capillary layer of crushed clay grain. Excess water that cannot be buffered will drain slowly. To create an additional buffer for droughts, the cassette is equipped to store about 1 cm of non-capillary water at the very bottom.

Filter layer:
A nonwoven polyester filter membrane of 150 g / m2 ensures that the fine particles of the substrate cannot be washed away and cannot block the drainage holes.

Substrate layer:
The thickness of the substrate layer has been adapted to the needs of the sedum species and to the climate. This layer, on one hand, provides nutrients and water supply for the vegetation, and on the other hand it provides oxygen and anchorage for the roots. The substrate is light weight, providing nutrition, aeration and a high capacity to store water.

Sedum Layer
8 to 10 species of sedum are employed, grown for nodules to become well root. The trays are supplied with 80% minimum coverage.

REVISIONS	A	19.06.18	client issue
	B	22.06.18	planning application

DRAWING NOT TO BE SCALED.
ALL DIMENSIONS TO BE CHECKED ON SITE.

REFER TO ALL OTHER RELEVANT
DRAWINGS AND SPECIFICATIONS.
IN CASE OF ANY DISCREPANCY OR
AMBIGUITY REFER TO CA

planning	PROJECT	23a Hampstead Hill Gardens	
	DRAWING	Green Roof Details	
	SCALE	1:50@A3 and 1:10@A3	
	DATE	Jun-18	
DRAWING	596/GR	REV	B

**Walker Bushe Architects
Buildings and Interiors**

6 Highbury Corner
Highbury Crescent
London N51RD

020 7697 0707^T
020 7697 0808^F
studio@walkerbushe.co.uk^E