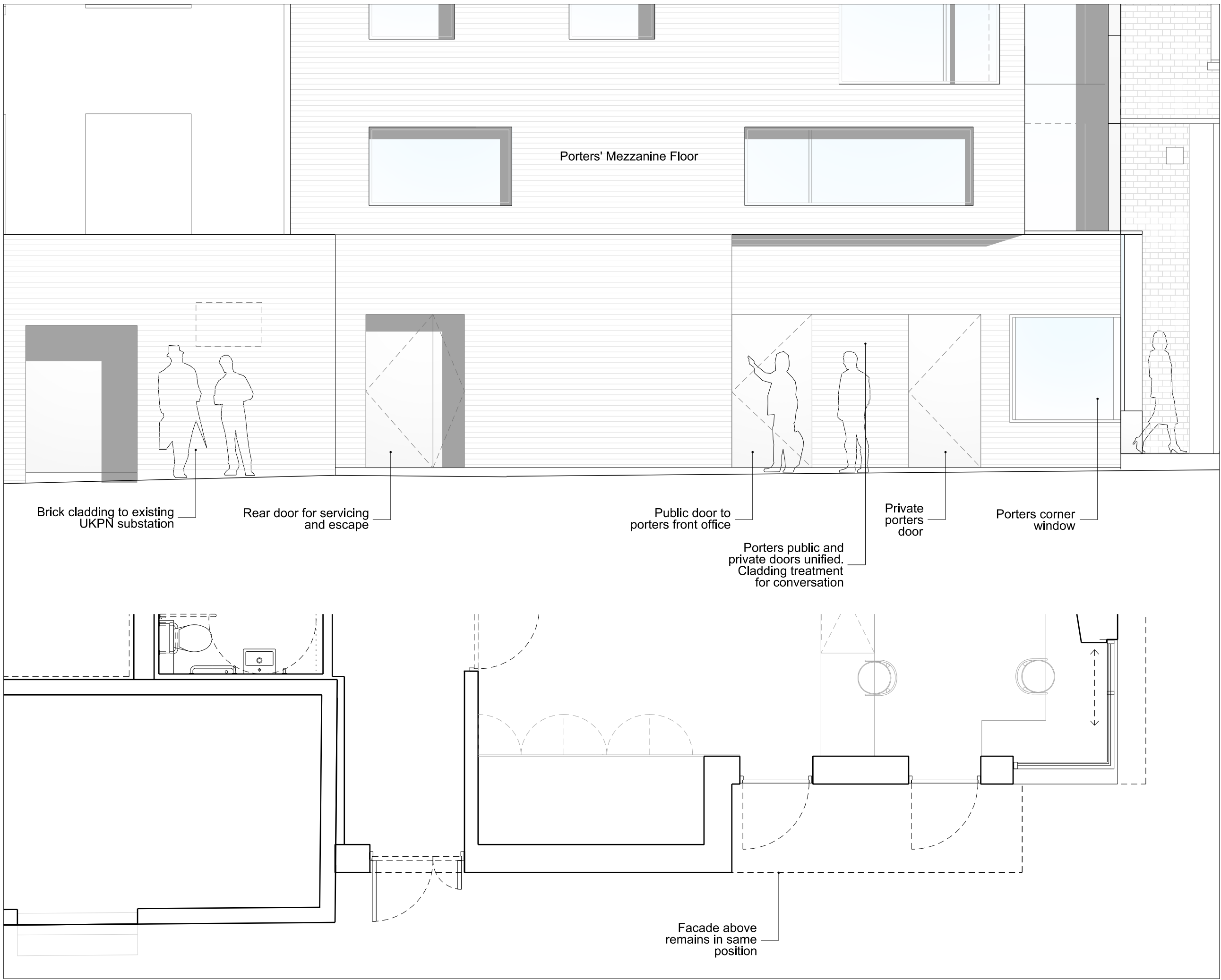


Planning Consent  
01 606-19300



Proposed non-material amendments  
02 606-19300

- PLEASE NOTE: No changes are proposed to any of the Listed No. 21 works. Changes listed below only affect the ground floor rear facade of No. 19 High Holborn which are submitted as non-material amendments.

Summary of the non-material amendments at rear ground floor:

-Some minor adjustments are proposed to significantly improve the operability of the Inn's porter functions while helping to make the rear ground elevation more sympathetic to the facing South Square buildings.

- The public entrance to the porters area has moved slightly, brought alongside the secure entrance and away from the rear servicing/escape door, which makes the building more legible by improving the visibility of the public entrance for visitors

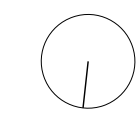
- Moving the door brings porters uses together, and helps to break up the expanse of brick elevation here, making it more sympathetic to the rhythm and order of the facing South Square rear elevations.

- By squaring off the ground floor plan, there is no increase to GEA, but the adjustments improve the internal function of the porters area at ground and mezzanine levels considerably by reducing the area of overhang and its impact on useable floor area. This significantly reduces the amount of compromised space at mezzanine level.

- The overhang/ soffit has been lifted up nominally to safeguard against vehicle impact.

REVISIONS			
REV	DATE	DESCRIPTION	
PL2	22/06/18	ISSUED FOR NON-MATERIAL AMENDMENTS	
P1	11/06/18	ISSUED FOR CAMDEN COMMENT	

KEY PLAN



STATUS

## PLANNING

RICK MATHER ARCHITECTS ©					
123 Camden High Street London NW1 7JR T: 020 7284 1727 F: 020 7267 7826 Info@rickmather.com www.rickmather.com					
THE HONOURABLE SOCIETY OF GRAY'S INN 19-21 HIGH HOLBORN					
PROPOSED REAR GROUND FLOOR - NO.19 NON-MATERIAL AMENDMENTS					
DRAWN MK	JOB # 606	DRG # 19300	REV PL2		
CHECKED ME	SCALE@A1 1:50 1:100	SIZE A1 A3	DATE JUN 18	REV DATE 22.06.18	