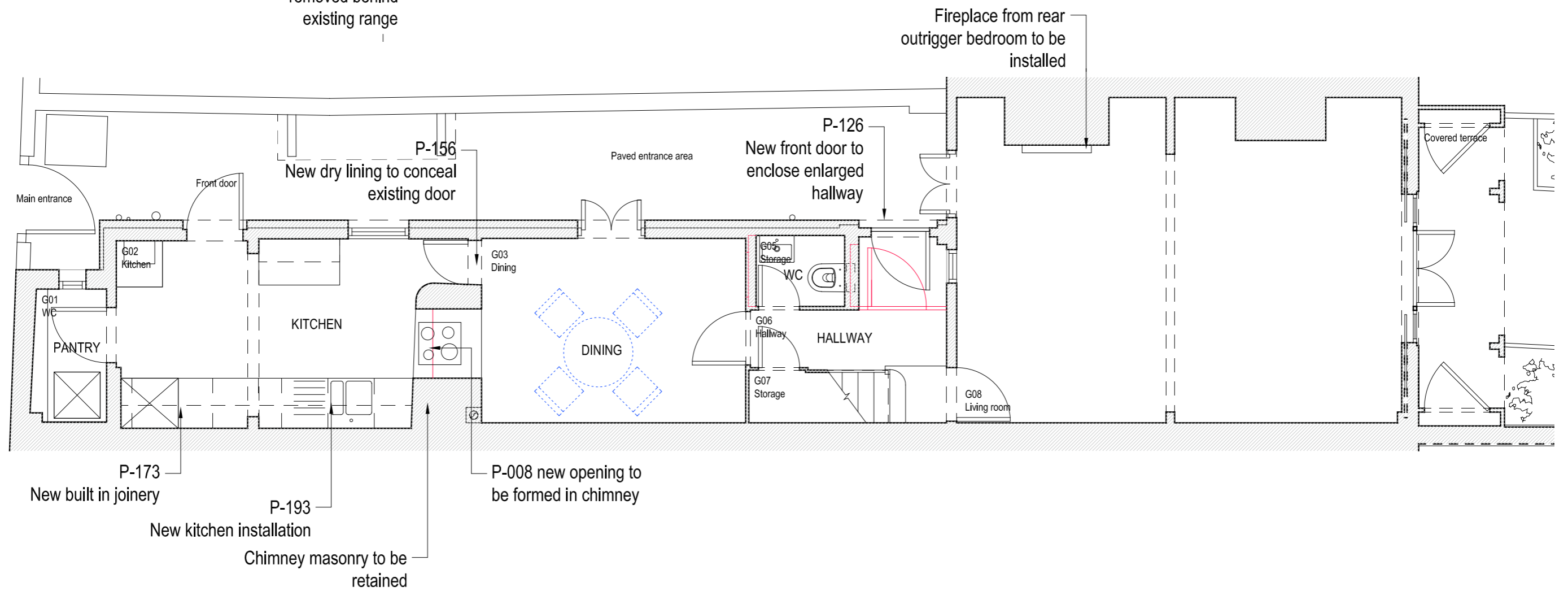
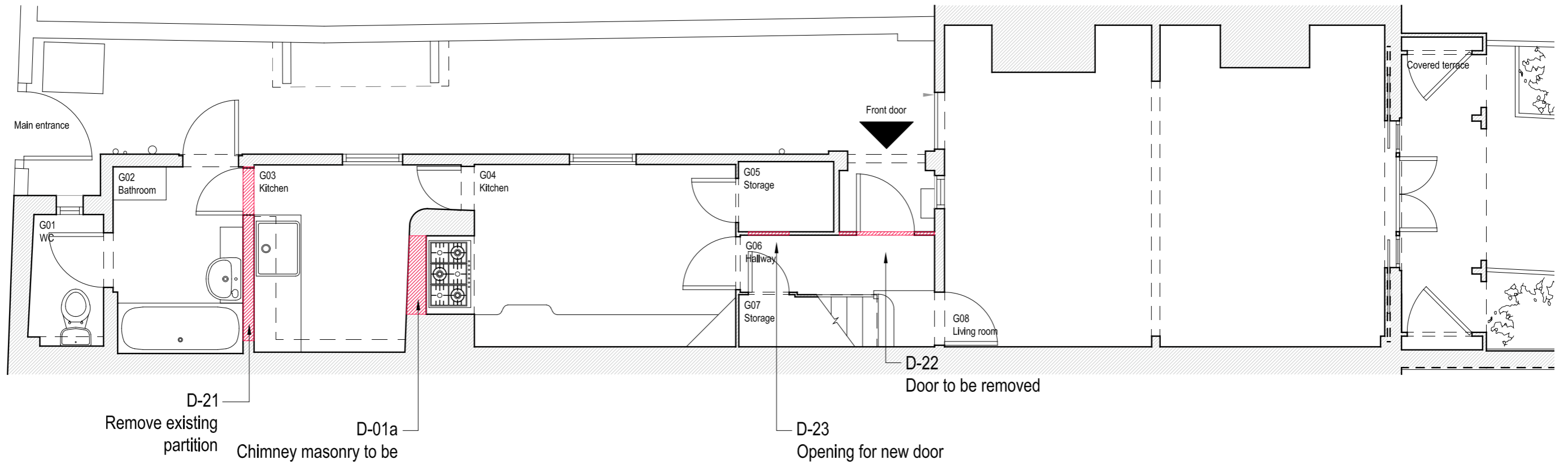


COOKE
FAWCETT
ARCHITECTS

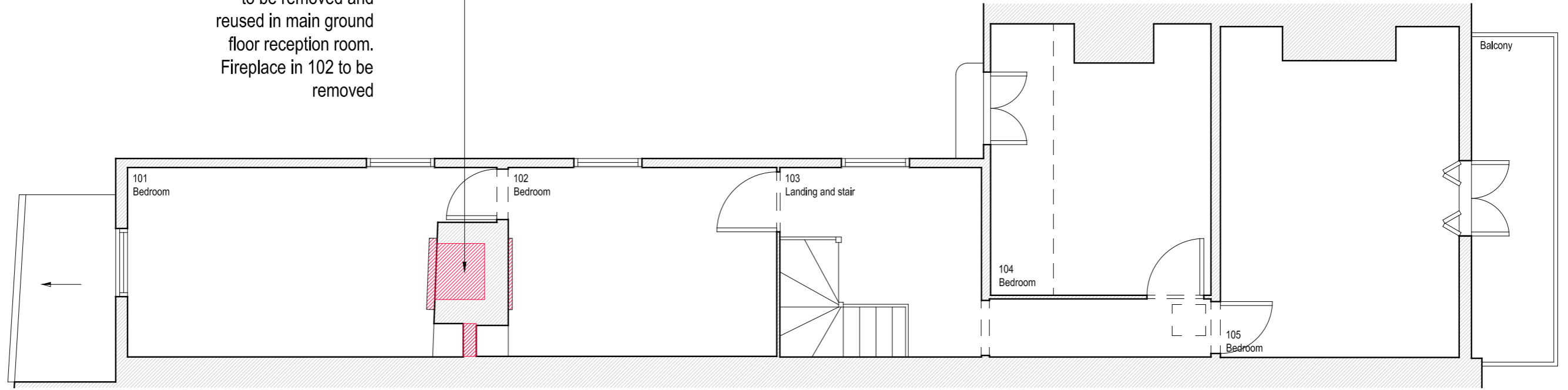
Rose Cottage, Vale of Health, NW3 1AX
Proposed kitchen arrangement and chimney modifications
12.04.2018

180412_135_REP_ProposedKitchen

1. Drawings
2. Visualisations



D01b Fireplace in 101
to be removed and
reused in main ground
floor reception room.
Fireplace in 102 to be
removed

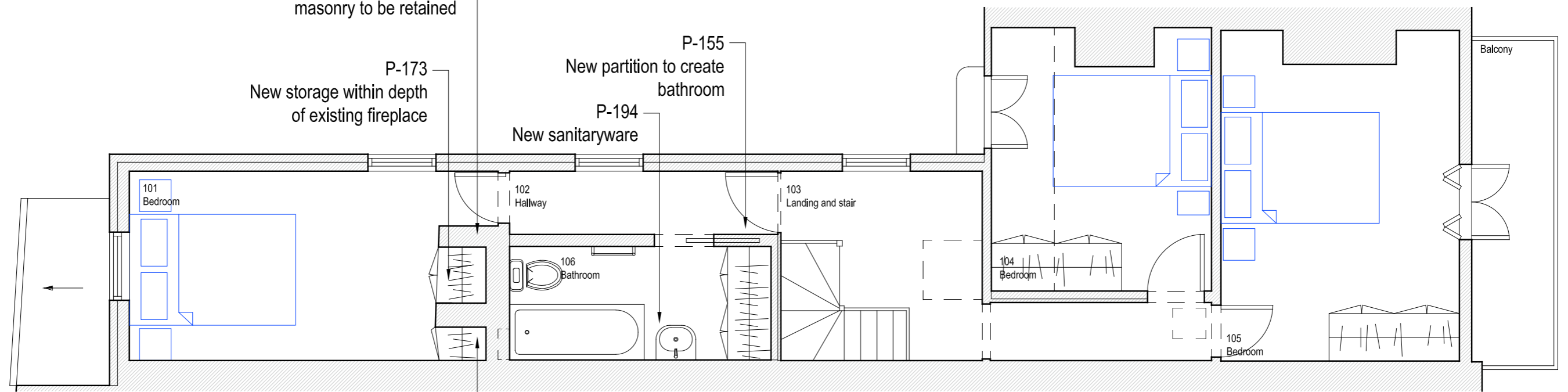


Existing chimney
masonry to be retained

P-173
New storage within depth
of existing fireplace

P-194
New sanitaryware

P-155
New partition to create
bathroom



Cupboard to be
enlarged to fill void



Height of opening
increased

Opening created
above and behind
existing range



Down stand →

Nibs →

Opening in chimney →

Masonry retained →

New kitchen installation →

© 2018 Cooke Fawcett Ltd.

This document and the ideas incorporated herein, as an instrument of professional service, is the property of Cooke Fawcett Ltd. and is not to be used, reproduced or transmitted, in whole or in part, in any form or by any means without the prior written authorisation of Cooke Fawcett Ltd.

Unless indicated otherwise, all proprietary material in this document is the property of Cooke Fawcett Ltd. Every reasonable attempt has been made to identify the authors and owners of any proprietary material that does not belong to Cooke Fawcett Ltd. We apologise for any errors or omissions that may have occurred. We will endeavour to correct them in subsequent uses.