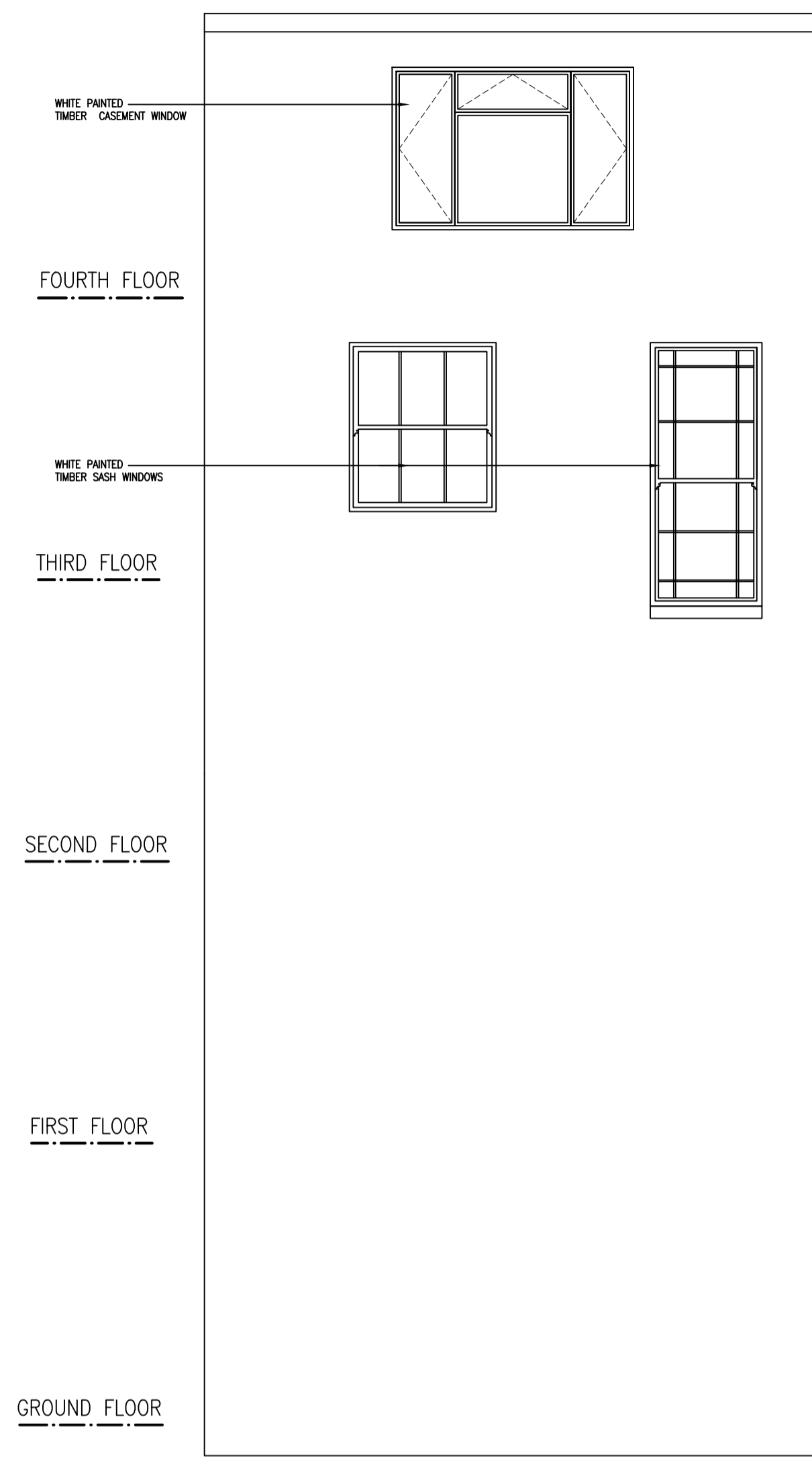
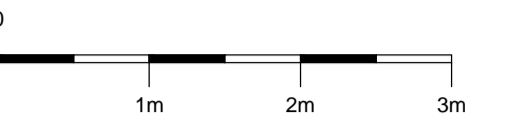
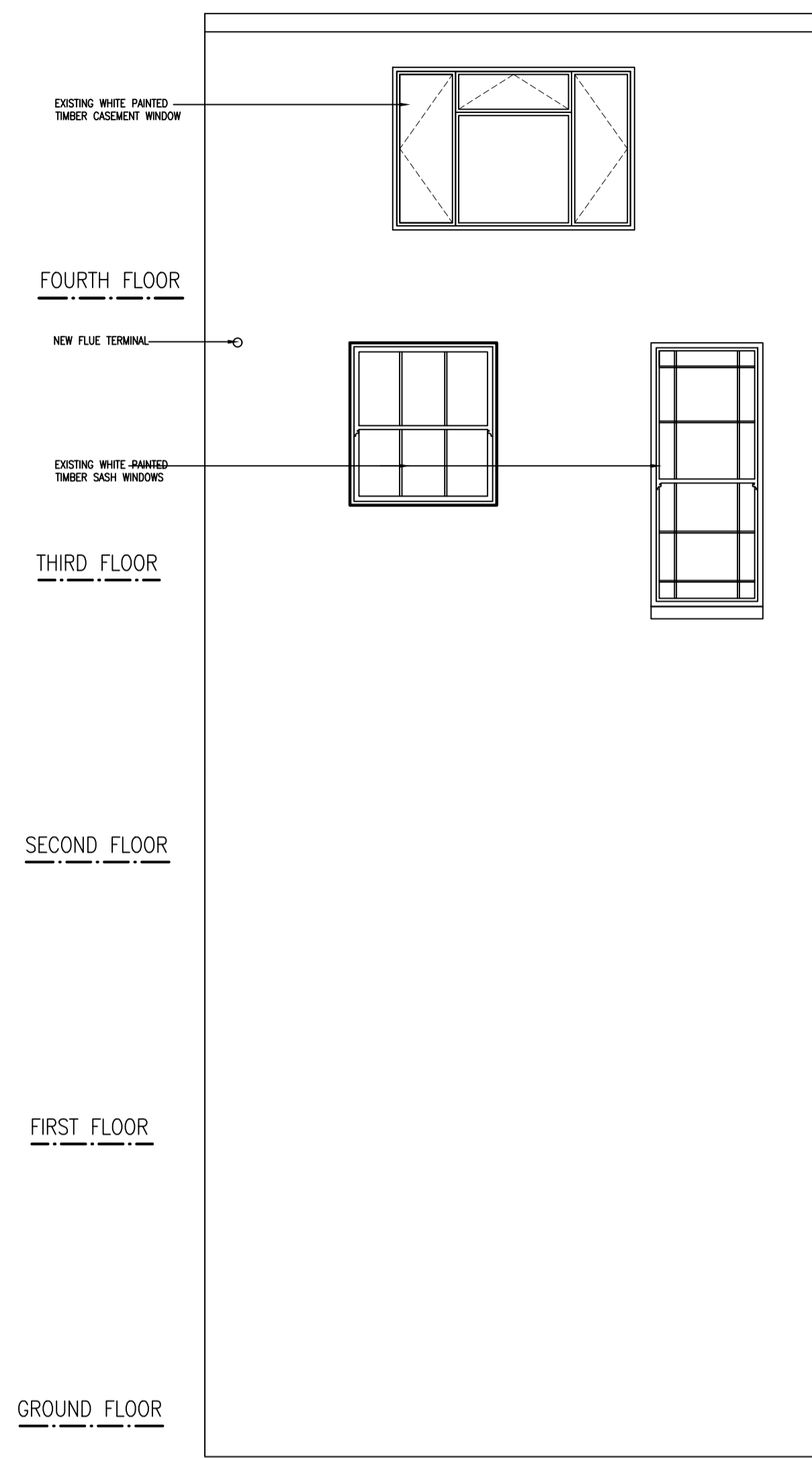


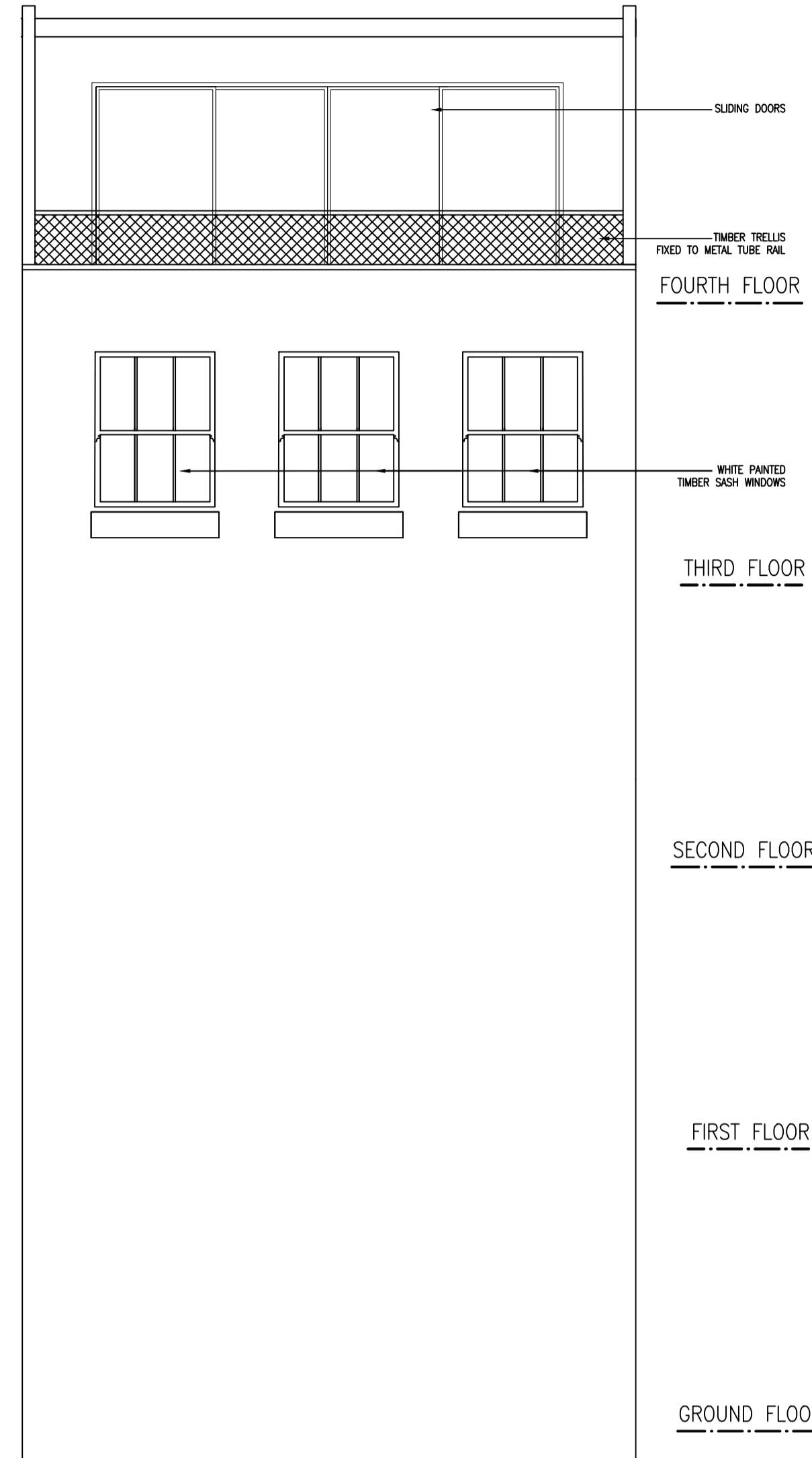
NOTES:



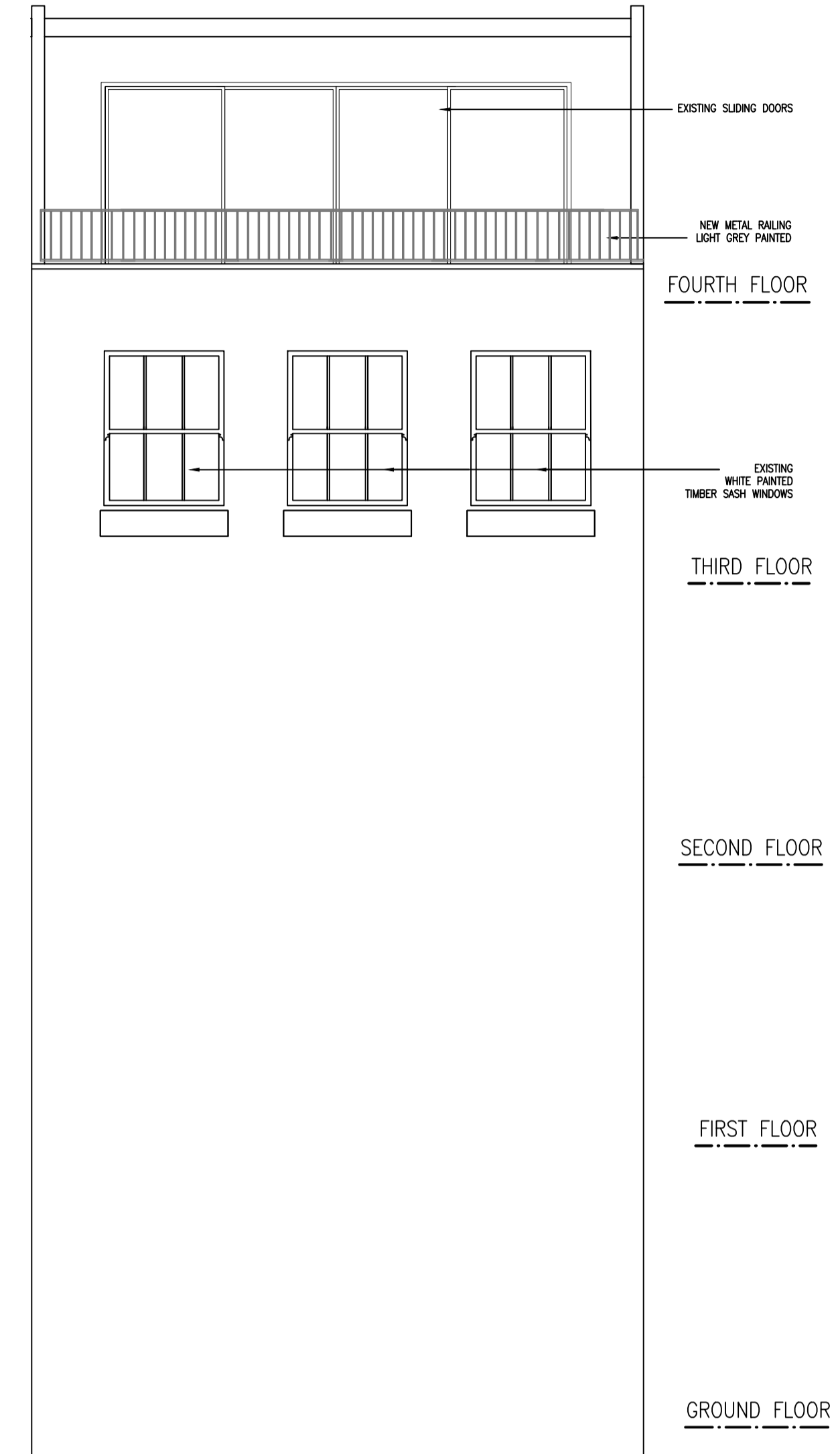
EXISTING REAR ELEVATION  
SHOWING UPPER PARTS (FLAT 3)



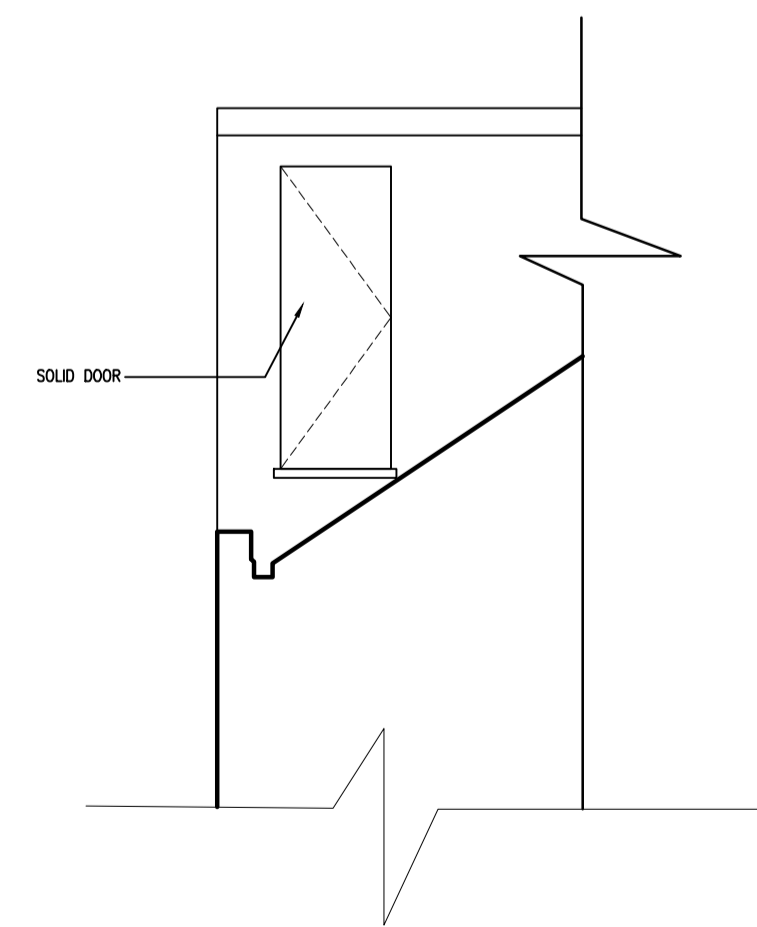
PROPOSED REAR ELEVATION  
SHOWING UPPER PARTS (FLAT 3)  
WITH FLUE TERMINAL



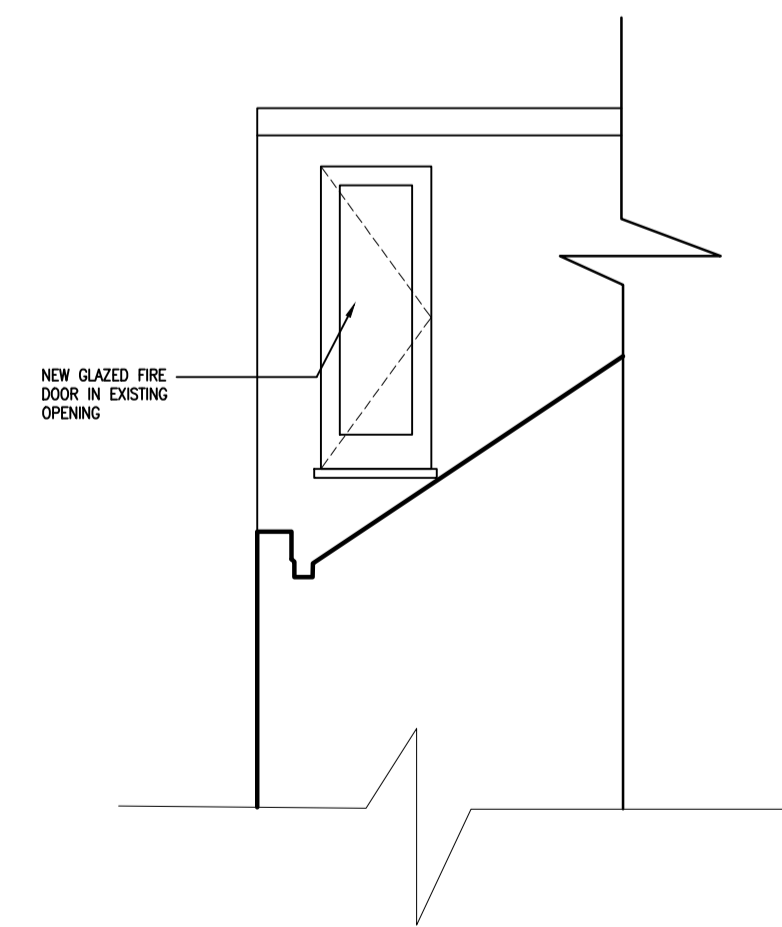
EXISTING FRONT ELEVATION  
SHOWING UPPER PARTS (FLAT 3)



PROPOSED FRONT ELEVATION  
SHOWING UPPER PARTS (FLAT 3)  
WITH NEW BALUSTRADE



PART NORTH ELEVATION SHOWING  
EXISTING EE DOOR



PART NORTH ELEVATION SHOWING  
PROPOSED EE DOOR

27/07/18	PROPOSED BALUSTRADE AMENDED TO SUIT PLANNERS REQUIREMENT	B
14/06/18	EXISTING AND PROPOSED NORTH ELEVATION ADDED	A
DATE	REVISIONS	REV

THIS DRAWING IS THE COPYRIGHT OF THE ARCHITECT AND SHOULD NOT BE REPRODUCED WITHOUT WRITTEN CONSENT.

PROJECT  
**22 CHALCOT SQUARE  
LONDON  
NW1 8YA**

DRAWING  
**EXISTING AND PROPOSED  
FRONT AND REAR  
ELEVATIONS**

DATE NOV'17	<b>transformation</b> 45 LANCASTER GROVE LONDON NW3 4HB TEL: 020 7424 0122 e-mail: info@transformation-architects.co.uk
DELT. EC	
COMPUTER 2044-02	
SCALE 1:50	
DWG. No. 2044-002	REV. No. B