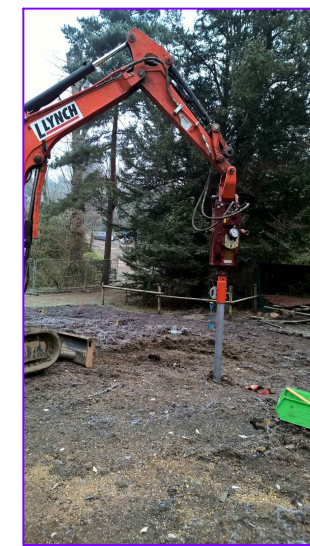
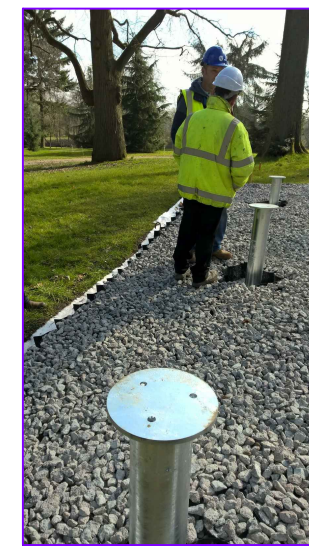
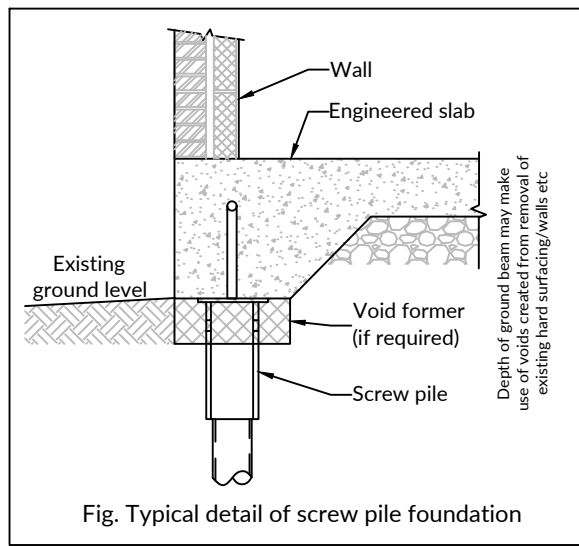
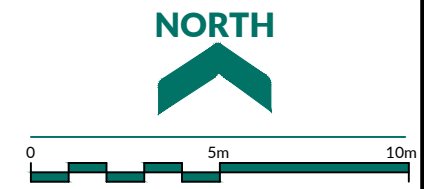


Trees at 5 Oval Road, London, NW1 7EA

| Tree No. | Species            | Ht (m) | Branch Spread (m) |   |      |   |             | Stem diameters (cm) |        |        |        |                   | Height of crown clearance (m) | Height of first branch (m) and direction (compass point) | Age class | Category grading | Estimated remaining contribution (yrs) | Condition Physiological / Structural  | Tree Works to BS 3998 | Root protection radius (m) | Root protection area sq.m |
|----------|--------------------|--------|-------------------|---|------|---|-------------|---------------------|--------|--------|--------|-------------------|-------------------------------|--|-----------|------------------|--|---|-----------------------|----------------------------|---------------------------|
|          |                    |        | N                 | E | S    | W | Single stem | 2-5 stems           |        |        |        | More than 5 stems |                               |  |           |                  |  |   |                       |                            |                           |
|          |                    |        |                   |   |      |   |             | Stem 1              | Stem 2 | Stem 3 | Stem 4 |                   |                               |  |           |                  |  |   |                       |                            |                           |
| 1        | Horse chestnut     | 6      | 2                 | 3 | 3    | 3 | 22          |                     |        |        |        |                   | 2                             | 2S   | S         | C1               | >10                                    | Small street tree.  |                       | 2.64                       | 22                        |
| 2        | Evergreen magnolia | 6      | 3                 | 3 | 3    | 3 | 14          |                     |        |        |        |                   | 1.2                           | 1.2N   | Y         | C1               | >10                                    | Small evergreen.  |                       | 1.68                       | 9                         |
| 3        | Lime               | 9      | 1                 | 2 | 2    | 2 | 16          |                     |        |        |        |                   | 2                             | 2.5N   | Y         | C1               | >10                                    | Small street tree.  |                       | 1.92                       | 12                        |
| 4        | Ash                | 9      | 4                 | 2 | 5    | 3 | 27          |                     |        |        |        |                   | 3                             | 3.5S   | S         | C1               | >10                                    | Growing in confined space between hard surfaces. Disturbing pavement in adjoining garden. |                       | 3.24                       | 33                        |
| 5        | Pair of Cherries   | 6av    | 2av               |   | 10av |   |             |                     |        |        |        |                   | 2                             | 2S   | Y         | C2               | >10                                    | Small trees.  | Remove.               | 1.20                       | 5                         |
| 6        | Sycamore           | 14     | 4                 | 5 | 6    | 7 | 65e         |                     |        |        |        |                   | 7                             | 7E   | E         | B1               | >20                                    | Larger tree growing between properties. Has been crown reduced in the past.               |                       | 7.80                       | 191                       |
| 7        | Lime               | 16     | 7                 | 7 | 4    | 6 | 47          |                     |        |        |        |                   | 2                             | 3N   | E         | B2               | >20                                    | Misshapen but contributes to row along railway line boundary.                             |                       | 5.64                       | 100                       |
| 8        | Lime               | 15     | 5                 | 7 | 3    | 5 | 43          |                     |        |        |        |                   | 6                             | 6N   | E         | B2               | >20                                    | Misshapen but contributes to row along railway line boundary.                             |                       | 5.16                       | 84                        |
| 9        | Beech              | 14     | 0                 | 5 | 6    | 5 | 37          |                     |        |        |        |                   | 2                             | 2S   | E         | C2               | >10                                    | Misshapen but contributes to row along railway line boundary.                             |                       | 4.44                       | 62                        |



Images of screw pile installation

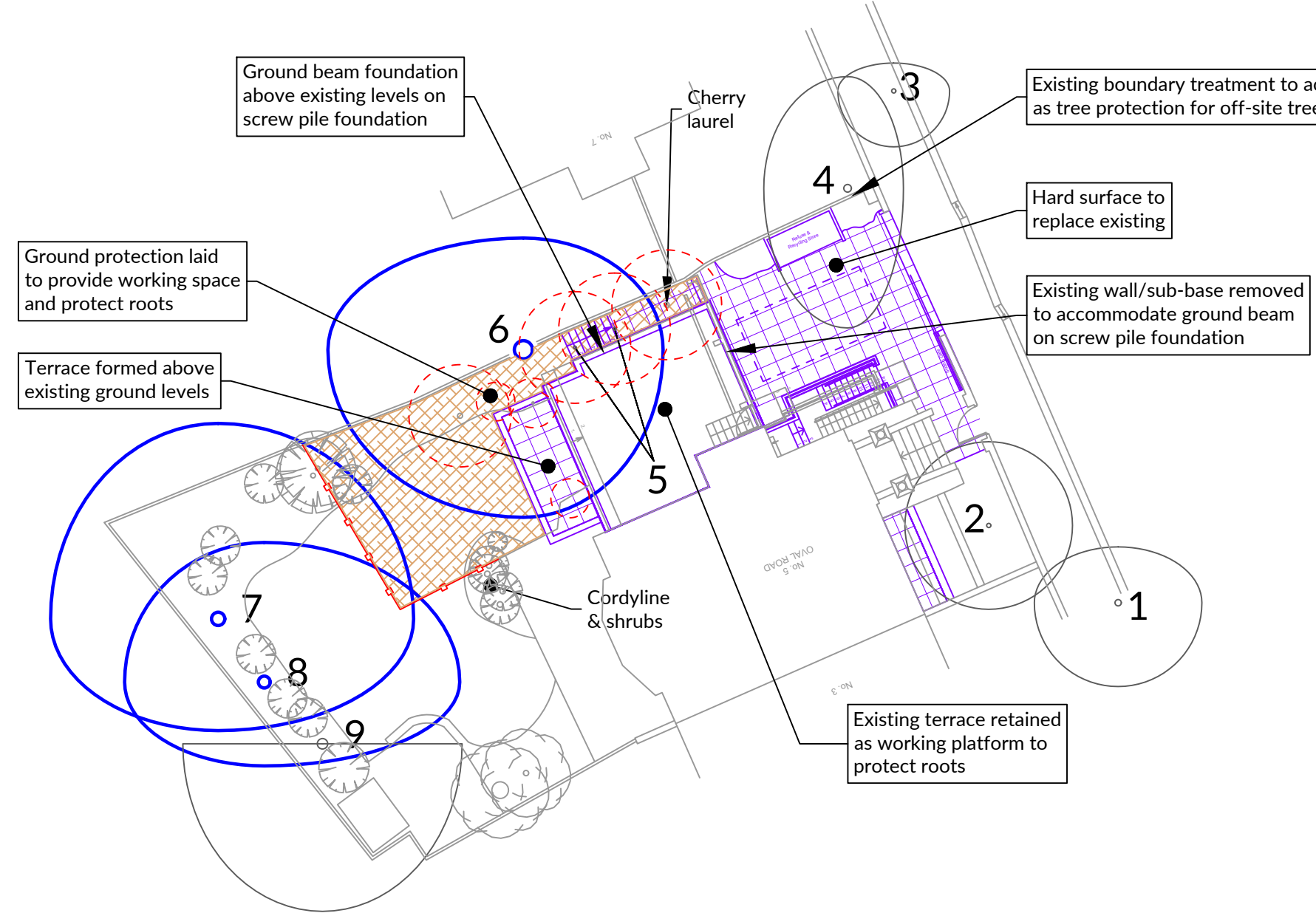
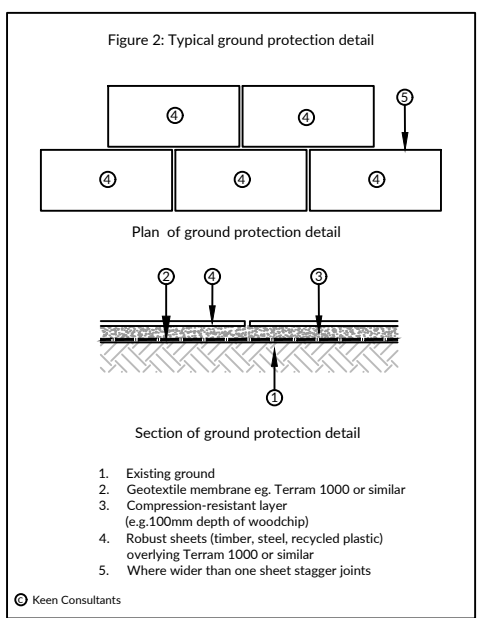
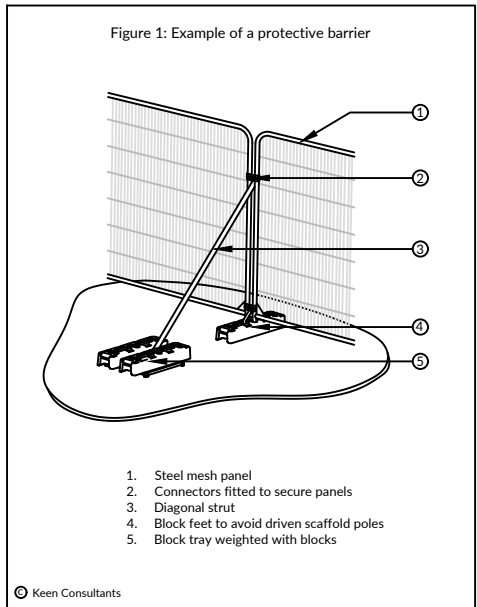


- NOTES**
- The original of this drawing was produced in colour - a monochrome copy should not be relied upon.
  - Scale for planning purposes only.
  - All dimensions to be checked on site.
  - The copyright of this document resides with Keen Consultants unless assigned in writing by the company.
  - Details shown on this drawing are devised with reference to BS5837:2012: Trees in relation to design, demolition and construction - Recommendations.
  - Check if Tree Preservation Order or Conservation Area protection applies to trees before undertaking tree works.
  - Existing Site Plan based on Charles Doe Architects project/drawing number 1435/5-01.
  - Proposed - Site Plan based on Charles Doe Architects project/drawing number 1435/TP-300.

- KEY**
- Existing site features
  - Proposed structures
  - Trees retained
  - Trees for removal
  - 2.0m high barrier as detail in Figure 1
  - Area of ground protection as detail in Figure 2

**KEY TO TREE SCHEDULE**

| Column Heading  | Explanation  |
|---|--|
| Tree No.  | Unique number corresponding with number on plan  |
| Species   | English names  |
| Ht (m)  | Height in metres   |
| Branch Spread   | Crown radius in metres to cardinal points of the compass   |
| Stem Dia  | All measurements conform to Annex C of BS 5837:2012<br>Single stem = Stem diameter in centimetres measured at 1.5m above ground level.<br>Multi-stemmed tree with 2 to 5 stems = Diameter of each stem<br>Multi-stemmed tree with more than 5 stems = Average stem diameter and number of stems  |
| Height of crown clearance                                   | Height in metres between the ground and underside of canopy  |
| Height of first major branch and direction of growth        | Height in metres from ground level to base of first major branch and the approximate direction of growth   |
| Abbreviations as suffix to a dimension                      | Suffix 'e' denotes an estimated dimension  |
| Age Class   | Suffix 'w' denotes an average dimension  |
| Category grading and Estimated remaining Contribution (yrs) | Age Class definitions:<br>Y = Young S = Semi-mature E = Early mature M = Mature O = Over mature<br>Summary of BS 5837:2012 categorisation:<br><br>1. Trees unsuitable for retention:<br>U = those in such a condition that they cannot realistically be retained as living trees in the context of the current land use for longer than 10 years<br>2. Trees to be considered for retention:<br>A1, 2 or 3 = trees of high quality (substantial contribution >40 yrs)<br>B1, 2 or 3 = trees of moderate quality (significant contribution >20 yrs)<br>C1, 2 or 3 = trees of low quality (but adequate, ie >10 yrs or young trees - until new planting can be established)<br>Useful estimated remaining contribution of the tree or tree group |
| Estimated remaining contribution                            | Brief description including physiological and structural defects   |
| Condition   | Works required to be undertaken to the trees to facilitate the construction of remediate a defect encountered during the survey  |
| Tree Works  | Radius of minimum root protection area in metres calculated from section 4.6 and Annex D   |
| Root Protection Radius                                      | Total area of minimum root protection area extrapolated from root protection radius  |
| Root Protection Area  |  |



| Rev | Description       | Date     |
|-----|-------------------|----------|
| 0   | Preliminary issue | 27.03.18 |

**KEEN CONSULTANTS**  
Redlands Farm, Redlands Lane, Ewshot, Farnham, Surrey GU10 5AS  
T 01252 850096  
F 01252 851702  
mail@keenconsultants.co.uk  
keenconsultants.co.uk

Client: **LEVY LLP**

Project: **5 OVAL ROAD, LONDON**

Title: **ARBORICULTURAL PLAN**

Date: **MARCH 2018** Scale: **1:200@A3**

Drawn by: **ML** Checked by: **JTK**

Drawing Number: **9965-KC-SP-YTREE-AP02Rev0**