

General notes:
This drawing is copyright of KSR architects. This drawing must be read in conjunction with the Designer's Risk Assessment, specification and all other relevant documentation and drawings. KSR architects accept no liability for any expense, loss or damage of whatsoever nature and however arising from any variation made to this drawing or in the execution of the work to which it relates which has not been referred to them and their approval obtained.
Do not scale from this drawing or the digital data, only figured dimensions are to be used. For Planning refer to linear scale.
Check all dimensions on site prior to carrying out any work to avoid any discrepancy

P7	Minor Material Amendment Application	20.06.18	DC
P6	Minor Material Amendment Application	09.02.18	DC
P5	Detail Note added for Code for Sustainable Homes compliance	18.10.12	RS
P4	Condenser reference omitted	02.10.12	RS
P3	Revised to comply with Lifetime Homes Standard	06.09.12	RS
P2	Entrance canopy design change (House A)	20.07.12	RS
P1	Planning Application Submission	08.05.12	RS

Rev	Description	Date	Child
© KSR Architects	Stamp		

PLANNING



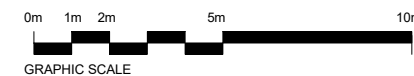
KSRARCHITECTS
KSR Architects LLP
14 Gower Street
London WC1E 6BT
t: +44 (0)20 7882 9500
e: info@ksrarchitects.com
www.ksrarchitects.com

Project:
6 NUTLEY TERRACE

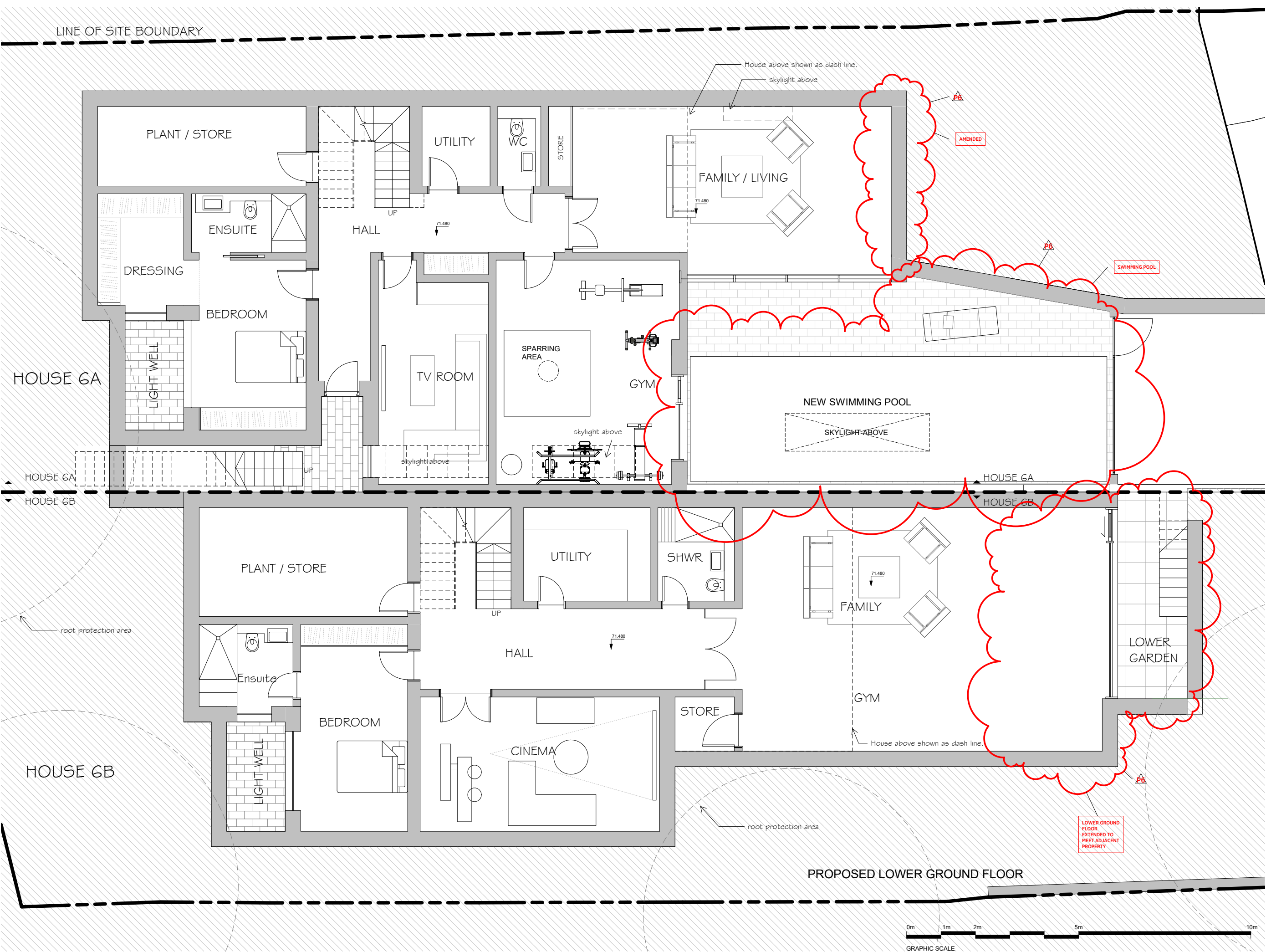
Title:
PROPOSED SITE PLAN

Date:	FEB 2018	Drawn By:	RL	Checked:	DC
Scale:		Status:			

Project Ref:	Drawing No:	Revision:
NUT	000	P7



PROPOSED SITE PLAN



General notes:
This drawing is copyright of KSR architects. This drawing must be read in conjunction with the Designer's Risk Assessment, specification and all other relevant documentation and drawings. KSR architects accept no liability for any expense, loss or damage of whatsoever nature and however arising from any variation made to this drawing or in the execution of the work to which it relates which has not been referred to them and their approval obtained.
Do not scale from this drawing or the digital data, only figured dimensions are to be used. For Planning refer to linear scale.
Check all dimensions on site prior to carrying out any works to avoid any discrepancy
Notes: 1. 2. 3. 4. 5. 6. 7. 8. 9. 10. 11. 12. 13. 14. 15. 16. 17. 18. 19. 20. 21. 22. 23. 24. 25. 26. 27. 28. 29. 30. 31. 32. 33. 34. 35. 36. 37. 38. 39. 40. 41. 42. 43. 44. 45. 46. 47. 48. 49. 50. 51. 52. 53. 54. 55. 56. 57. 58. 59. 60. 61. 62. 63. 64. 65. 66. 67. 68. 69. 70. 71. 72. 73. 74. 75. 76. 77. 78. 79. 80. 81. 82. 83. 84. 85. 86. 87. 88. 89. 90. 91. 92. 93. 94. 95. 96. 97. 98. 99. 100. 101. 102. 103. 104. 105. 106. 107. 108. 109. 110. 111. 112. 113. 114. 115. 116. 117. 118. 119. 120. 121. 122. 123. 124. 125. 126. 127. 128. 129. 130. 131. 132. 133. 134. 135. 136. 137. 138. 139. 140. 141. 142. 143. 144. 145. 146. 147. 148. 149. 150. 151. 152. 153. 154. 155. 156. 157. 158. 159. 160. 161. 162. 163. 164. 165. 166. 167. 168. 169. 170. 171. 172. 173. 174. 175. 176. 177. 178. 179. 180. 181. 182. 183. 184. 185. 186. 187. 188. 189. 190. 191. 192. 193. 194. 195. 196. 197. 198. 199. 200. 201. 202. 203. 204. 205. 206. 207. 208. 209. 210. 211. 212. 213. 214. 215. 216. 217. 218. 219. 220. 221. 222. 223. 224. 225. 226. 227. 228. 229. 230. 231. 232. 233. 234. 235. 236. 237. 238. 239. 240. 241. 242. 243. 244. 245. 246. 247. 248. 249. 250. 251. 252. 253. 254. 255. 256. 257. 258. 259. 260. 261. 262. 263. 264. 265. 266. 267. 268. 269. 270. 271. 272. 273. 274. 275. 276. 277. 278. 279. 280. 281. 282. 283. 284. 285. 286. 287. 288. 289. 290. 291. 292. 293. 294. 295. 296. 297. 298. 299. 300. 301. 302. 303. 304. 305. 306. 307. 308. 309. 310. 311. 312. 313. 314. 315. 316. 317. 318. 319. 320. 321. 322. 323. 324. 325. 326. 327. 328. 329. 330. 331. 332. 333. 334. 335. 336. 337. 338. 339. 340. 341. 342. 343. 344. 345. 346. 347. 348. 349. 350. 351. 352. 353. 354. 355. 356. 357. 358. 359. 360. 361. 362. 363. 364. 365. 366. 367. 368. 369. 370. 371. 372. 373. 374. 375. 376. 377. 378. 379. 380. 381. 382. 383. 384. 385. 386. 387. 388. 389. 390. 391. 392. 393. 394. 395. 396. 397. 398. 399. 400. 401. 402. 403. 404. 405. 406. 407. 408. 409. 410. 411. 412. 413. 414. 415. 416. 417. 418. 419. 420. 421. 422. 423. 424. 425. 426. 427. 428. 429. 430. 431. 432. 433. 434. 435. 436. 437. 438. 439. 440. 441. 442. 443. 444. 445. 446. 447. 448. 449. 450. 451. 452. 453. 454. 455. 456. 457. 458. 459. 460. 461. 462. 463. 464. 465. 466. 467. 468. 469. 470. 471. 472. 473. 474. 475. 476. 477. 478. 479. 480. 481. 482. 483. 484. 485. 486. 487. 488. 489. 490. 491. 492. 493. 494. 495. 496. 497. 498. 499. 500. 501. 502. 503. 504. 505. 506. 507. 508. 509. 510. 511. 512. 513. 514. 515. 516. 517. 518. 519. 520. 521. 522. 523. 524. 525. 526. 527. 528. 529. 530. 531. 532. 533. 534. 535. 536. 537. 538. 539. 540. 541. 542. 543. 544. 545. 546. 547. 548. 549. 550. 551. 552. 553. 554. 555. 556. 557. 558. 559. 560. 561. 562. 563. 564. 565. 566. 567. 568. 569. 570. 571. 572. 573. 574. 575. 576. 577. 578. 579. 580. 581. 582. 583. 584. 585. 586. 587. 588. 589. 590. 591. 592. 593. 594. 595. 596. 597. 598. 599. 600. 601. 602. 603. 604. 605. 606. 607. 608. 609. 610. 611. 612. 613. 614. 615. 616. 617. 618. 619. 620. 621. 622. 623. 624. 625. 626. 627. 628. 629. 630. 631. 632. 633. 634. 635. 636. 637. 638. 639. 640. 641. 642. 643. 644. 645. 646. 647. 648. 649. 650. 651. 652. 653. 654. 655. 656. 657. 658. 659. 660. 661. 662. 663. 664. 665. 666. 667. 668. 669. 670. 671. 672. 673. 674. 675. 676. 677. 678. 679. 680. 681. 682. 683. 684. 685. 686. 687. 688. 689. 690. 691. 692. 693. 694. 695. 696. 697. 698. 699. 700. 701. 702. 703. 704. 705. 706. 707. 708. 709. 710. 711. 712. 713. 714. 715. 716. 717. 718. 719. 720. 721. 722. 723. 724. 725. 726. 727. 728. 729. 730. 731. 732. 733. 734. 735. 736. 737. 738. 739. 740. 741. 742. 743. 744. 745. 746. 747. 748. 749. 750. 751. 752. 753. 754. 755. 756. 757. 758. 759. 760. 761. 762. 763. 764. 765. 766. 767. 768. 769. 770. 771. 772. 773. 774. 775. 776. 777. 778. 779. 780. 781. 782. 783. 784. 785. 786. 787. 788. 789. 790. 791. 792. 793. 794. 795. 796. 797. 798. 799. 800. 801. 802. 803. 804. 805. 806. 807. 808. 809. 810. 811. 812. 813. 814. 815. 816. 817. 818. 819. 820. 821. 822. 823. 824. 825. 826. 827. 828. 829. 830. 831. 832. 833. 834. 835. 836. 837. 838. 839. 840. 841. 842. 843. 844. 845. 846. 847. 848. 849. 850. 851. 852. 853. 854. 855. 856. 857. 858. 859. 860. 861. 862. 863. 864. 865. 866. 867. 868. 869. 870. 871. 872. 873. 874. 875. 876. 877. 878. 879. 880. 881. 882. 883. 884. 885. 886. 887. 888. 889. 890. 891. 892. 893. 894. 895. 896. 897. 898. 899. 900. 901. 902. 903. 904. 905. 906. 907. 908. 909. 910. 911. 912. 913. 914. 915. 916. 917. 918. 919. 920. 921. 922. 923. 924. 925. 926. 927. 928. 929. 930. 931. 932. 933. 934. 935. 936. 937. 938. 939. 940. 941. 942. 943. 944. 945. 946. 947. 948. 949. 950. 951. 952. 953. 954. 955. 956. 957. 958. 959. 960. 961. 962. 963. 964. 965. 966. 967. 968. 969. 970. 971. 972. 973. 974. 975. 976. 977. 978. 979. 980. 981. 982. 983. 984. 985. 986. 987. 988. 989. 990. 991. 992. 993. 994. 995. 996. 997. 998. 999. 1000. 1001. 1002. 1003. 1004. 1005. 1006. 1007. 1008. 1009. 1010. 1011. 1012. 1013. 1014. 1015. 1016. 1017. 1018. 1019. 1020. 1021. 1022. 1023. 1024. 1025. 1026. 1027. 1028. 1029. 1030. 1031. 1032. 1033. 1034. 1035. 1036. 1037. 1038. 1039. 1040. 1041. 1042. 1043. 1044. 1045. 1046. 1047. 1048. 1049. 1050. 1051. 1052. 1053. 1054. 1055. 1056. 1057. 1058. 1059. 1060. 1061. 1062. 1063. 1064. 1065. 1066. 1067. 1068. 1069. 1070. 1071. 1072. 1073. 1074. 1075. 1076. 1077. 1078. 1079. 1080. 1081. 1082. 1083. 1084. 1085. 1086. 1087. 1088. 1089. 1090. 1091. 1092. 1093. 1094. 1095. 1096. 1097. 1098. 1099. 1100. 1101. 1102. 1103. 1104. 1105. 1106. 1107. 1108. 1109. 1110. 1111. 1112. 1113. 1114. 1115. 1116. 1117. 1118. 1119. 1120. 1121. 1122. 1123. 1124. 1125. 1126. 1127. 1128. 1129. 1130. 1131. 1132. 1133. 1134. 1135. 1136. 1137. 1138. 1139. 1140. 1141. 1142. 1143. 1144. 1145. 1146. 1147. 1148. 1149. 1150. 1151. 1152. 1153. 1154. 1155. 1156. 1157. 1158. 1159. 1160. 1161. 1162. 1163. 1164. 1165. 1166. 1167. 1168. 1169. 1170. 1171. 1172. 1173. 1174. 1175. 1176. 1177. 1178. 1179. 1180. 1181. 1182. 1183. 1184. 1185. 1186. 1187. 1188. 1189. 1190. 1191. 1192. 1193. 1194. 1195. 1196. 1197. 1198. 1199. 1200. 1201. 1202. 1203. 1204. 1205. 1206. 1207. 1208. 1209. 1210. 1211. 1212. 1213. 1214. 1215. 1216. 1217. 1218. 1219. 1220. 1221. 1222. 1223. 1224. 1225. 1226. 1227. 1228. 1229. 1230. 1231. 1232. 1233. 1234. 1235. 1236. 1237. 1238. 1239. 1240. 1241. 1242. 1243. 1244. 1245. 1246. 1247. 1248. 1249. 1250. 1251. 1252. 1253. 1254. 1255. 1256. 1257. 1258. 1259. 1260. 1261. 1262. 1263. 1264. 1265. 1266. 1267. 1268. 1269. 1270. 1271. 1272. 1273. 1274. 1275. 1276. 1277. 1278. 1279. 1280. 1281. 1282. 1283. 1284. 1285. 1286. 1287. 1288. 1289. 1290. 1291. 1292. 1293. 1294. 1295. 1296. 1297. 1298. 1299. 1300. 1301. 1302. 1303. 1304. 1305. 1306. 1307. 1308. 1309. 1310. 1311. 1312. 1313. 1314. 1315. 1316. 1317. 1318. 1319. 1320. 1321. 1322. 1323. 1324. 1325. 1326. 1327. 1328. 1329. 1330. 1331. 1332. 1333. 1334. 1335. 1336. 1337. 1338. 1339. 1340. 1341. 1342. 1343. 1344. 1345. 1346. 1347. 1348. 1349. 1350. 1351. 1352. 1353. 1354. 1355. 1356. 1357. 1358. 1359. 1360. 1361. 1362. 1363. 1364. 1365. 1366. 1367. 1368. 1369. 1370. 1371. 1372. 1373. 1374. 1375. 1376. 1377. 1378. 1379. 1380. 1381. 1382. 1383. 1384. 1385. 1386. 1387. 1388. 1389. 1390. 1391. 1392. 1393. 1394. 1395. 1396. 1397. 1398. 1399. 1400. 1401. 1402. 1403. 1404. 1405. 1406. 1407. 1408. 1409. 1410. 1411. 1412. 1413. 1414. 1415. 1416. 1417. 1418. 1419. 1420. 1421. 1422. 1423. 1424. 1425. 1426. 1427. 1428. 1429. 1430. 1431. 1432. 1433. 1434. 1435. 1436. 1437. 1438. 1439. 1440. 1441. 1442. 1443. 1444. 1445. 1446. 1447. 1448. 1449. 1450. 1451. 1452. 1453. 1454. 1455. 1456. 1457. 1458. 1459. 1460. 1461. 1462. 1463. 1464. 1465. 1466. 1467. 1468. 1469. 1470. 1471. 1472. 1473. 1474. 1475. 1476. 1477. 1478. 1479. 1480. 1481. 1482. 1483. 1484. 1485. 1486. 1487. 1488. 1489. 1490. 1491. 1492. 1493. 1494. 1495. 1496. 1497. 1498. 1499. 1500. 1501. 1502. 1503. 1504. 1505. 1506. 1507. 1508. 1509. 1510. 1511. 1512. 1513. 1514. 1515. 1516. 1517. 1518. 1519. 1520. 1521. 1522. 1523. 1524. 1525. 1526. 1527. 1528. 1529. 1530. 1531. 1532. 1533. 1534. 1535. 1536. 1537. 1538. 1539. 1540. 1541. 1542. 1543. 1544. 1545. 1546. 1547. 1548. 1549. 1550. 1551. 1552. 1553. 1554. 1555. 1556. 1557. 1558. 1559. 1560. 1561. 1562. 1563. 1564. 1565. 1566. 1567. 1568. 1569. 1570. 1571. 1572. 1573. 1574. 1575. 1576. 1577. 1578. 1579. 1580. 1581. 1582. 1583. 1584. 1585. 1586. 1587. 1588. 1589. 1590. 1591. 1592. 1593. 1594. 1595. 1596. 1597. 1598. 1599. 1600. 1601. 1602. 1603. 1604. 1605. 1606. 1607. 1608. 1609. 1610. 1611. 1612. 1613. 1614. 1615. 1616. 1617. 1618. 1619. 1620. 1621. 1622. 1623. 1624. 1625. 1626. 1627. 1628. 1629. 1630. 1631. 1632. 1633. 1634. 1635. 1636. 1637. 1638. 1639. 1640. 1641. 1642. 1643. 1644. 1645. 1646. 1647. 1648. 1649. 1650. 1651. 1652. 1653. 1654. 1655. 1656. 1657. 1658. 1659. 1660. 1661. 1662. 1663. 1664. 1665. 1666. 1667. 1668. 1669. 1670. 1671. 1672. 1673. 1674. 1675. 1676. 1677. 1678. 1679. 1680. 1681. 1682. 1683. 1684. 1685. 1686. 1687. 1688. 1689. 1690. 1691. 1692. 1693. 1694. 1695. 1696. 1697. 1698. 1699. 1700. 1701. 1702. 1703. 1704. 1705. 1706. 1707. 1708. 1709. 1710. 1711. 1712. 1713. 1714. 1715. 1716. 1717. 1718. 1719. 1720. 1721. 1722. 1723. 1724. 1725. 1726. 1727. 1728. 1729. 1730. 1731. 1732. 1733. 1734. 1735. 1736. 1737. 1738. 1739. 1740. 1741. 1742. 1743. 1744. 1745. 1746. 1747. 1748. 1749. 1750. 1751. 1752. 1753. 1754. 1755. 1756. 1757. 1758. 1759. 1760. 1761. 1762. 1763. 1764. 1765. 1766. 1767. 1768. 1769. 1770. 1771. 1772. 1773. 1774. 1775. 1776. 1777. 1778. 1779. 1780. 1781. 1782. 1783. 1784. 1785. 1786. 1787. 1788. 1789. 1790. 1791. 1792. 1793. 1794. 1795. 1796. 1797. 1798. 1799. 1800. 1801. 1802. 1803. 1804. 1805. 1806. 1807. 1808. 1809. 1810. 1811. 1812. 1813. 1814. 1815. 1816. 1817. 1818. 1819. 1820. 1821. 1822. 1823. 1824. 1825. 1826. 1827. 1828. 1829. 1830. 1831. 1832. 1833. 1834. 1835. 1836. 1837. 1838. 1839. 1840. 1841. 1842. 1843. 1844. 1845. 1846. 1847. 1848. 1849. 1850. 1851. 1852. 1853. 1854. 1855. 1856. 1857. 1858. 1859. 1860. 1861. 1862. 1863. 1864. 1865. 1866. 1867. 1868. 1869. 1870. 1871. 1872. 1873. 1874. 1875. 1876. 1877. 1878. 1879. 1880. 1881. 1882. 1883. 1884. 1885. 1886. 1887. 1888. 1889. 1890. 1891. 1892. 1893. 1894. 1895. 1896. 1897. 1898. 1899. 1900. 1901. 1902. 1903. 1904. 1905. 1906. 1907. 1908. 1909. 1910. 1911. 1912. 1913. 1914. 1915. 1916. 1917. 1918. 1919. 1920. 1921. 1922. 1923. 1924. 1925. 1926. 1927. 1928. 1929. 1930. 1931. 1932. 1933. 1934. 1935. 1936. 1937. 1938. 1939. 1940. 1941. 1942. 1943. 1944. 1945. 1946. 1947. 1948. 1949. 1950. 1951. 1952. 1953. 1954. 1955. 1956. 1957. 1958. 1959. 1960. 1961. 1962. 1963. 1964. 1965. 1966. 1967. 1968. 1969. 1970. 1971. 1972. 1973. 1974. 1975. 1976. 1977. 1978. 1979. 1980. 1981. 1982. 1983. 1984. 1985. 1986. 1987. 1988. 1989. 1990. 1991. 1992. 1993. 1994. 1995. 1996. 1997. 1998. 1999. 2000. 2001. 2002. 2003. 2004. 2005. 2006. 2007. 2008. 2009. 2010. 2011. 2012. 2013. 2014. 2015. 2016. 2017. 2018. 2019. 2020. 2021. 2022. 2023. 2024. 2025. 2026. 2027. 2028. 2029. 2030. 2031. 2032. 2033. 2034. 2035. 2036. 2037. 2038. 2039. 2040. 2041. 2042. 2043. 2044. 2045. 2046. 2047. 2048. 2049. 2050. 2051. 2052. 2053. 2054. 2055. 2056. 2057. 2058. 2059. 2060. 2061. 2062. 2063. 2064. 2065. 2066. 2067. 2068. 2069. 2070. 2071. 2072. 2073. 2074. 2075. 2076. 2077. 2078. 2079. 2080. 2081. 2082. 2083. 2084. 2085. 2086. 2087. 2088. 2089. 2090. 2091. 2092. 2093. 2094. 2095. 2096. 2097. 2098. 2099. 2100. 2101. 2102. 2103. 2104. 2105. 2106. 2107. 2108. 2109. 2110. 2111. 2112. 2113. 2114. 2115. 2116. 2117. 2118. 2119. 2120. 2121. 2122. 2123. 2124. 2125. 2126. 2127. 2128. 2129. 2130. 2131. 2132. 2133. 2134. 2135. 2136. 2137. 2138. 2139. 2140. 2141. 2142. 2143. 2144. 2145. 2146. 2147. 2148. 2149. 2150. 2151. 2152. 2153. 2154. 2155. 2156. 2157. 2158. 2159. 2160. 2161. 2162. 2163. 2164. 2165. 2166. 2167. 2168. 2169. 2170. 2171. 2172. 2173. 2174. 2175. 2176. 2177. 2178. 2179. 2180. 2181. 2182. 2183. 2184. 2185. 2186. 2187. 2188. 2189. 2190. 2191. 2192. 2193. 2194. 2195. 2196. 2197. 21



General notes:
This drawing is copyright of KSR architects. This drawing must be read in conjunction with the Designer's Risk Assessment, specification and all other relevant documentation and drawings. KSR architects accept no liability for any expense, loss or damage of whatsoever nature and however arising from any variation made to this drawing or in the execution of the work to which it relates which has not been referred to them and their approval obtained.
Do not scale from this drawing or the digital data, only figured dimensions are to be used. For Planning refer to linear scale.
Check all dimensions on site prior to carrying out any works.
Note: There is a discrepancy

Rev	Description	Date	Chkd
P7	Minor Material Amendment Application	20.06.18	DC
P6	Minor Material Amendment Application	09.02.18	DC
P5	Detail Note added for Code for Sustainable Homes compliance	18.10.12	RS
P4	Condenser reference omitted	02.10.12	RS
P3	Revised to comply with Lifetime Homes Standard	06.09.12	RS
P2	Entrance canopy design change (House A)	20.07.12	RS
P1	Planning Application Submission	08.05.12	RS

Rev Description Date Chkd
© KSR Architects
Stamp

PLANNING



LOWER GROUND FLOOR EXTENDED TO MEET ADJACENT PROPERTY

KSRARCHITECTS
KSR Architects LLP
14 Gower Street
London WC1E 6BT
t: +44 (0)20 7857 5000
e: info@ksrarchitects.com
w: www.ksrarchitects.com

Project:
6 NUTLEY TERRACE

Title:
PROPOSED GROUND FLOOR PLAN

Date: FEB 2018 Drawn By: RL Checked: DC

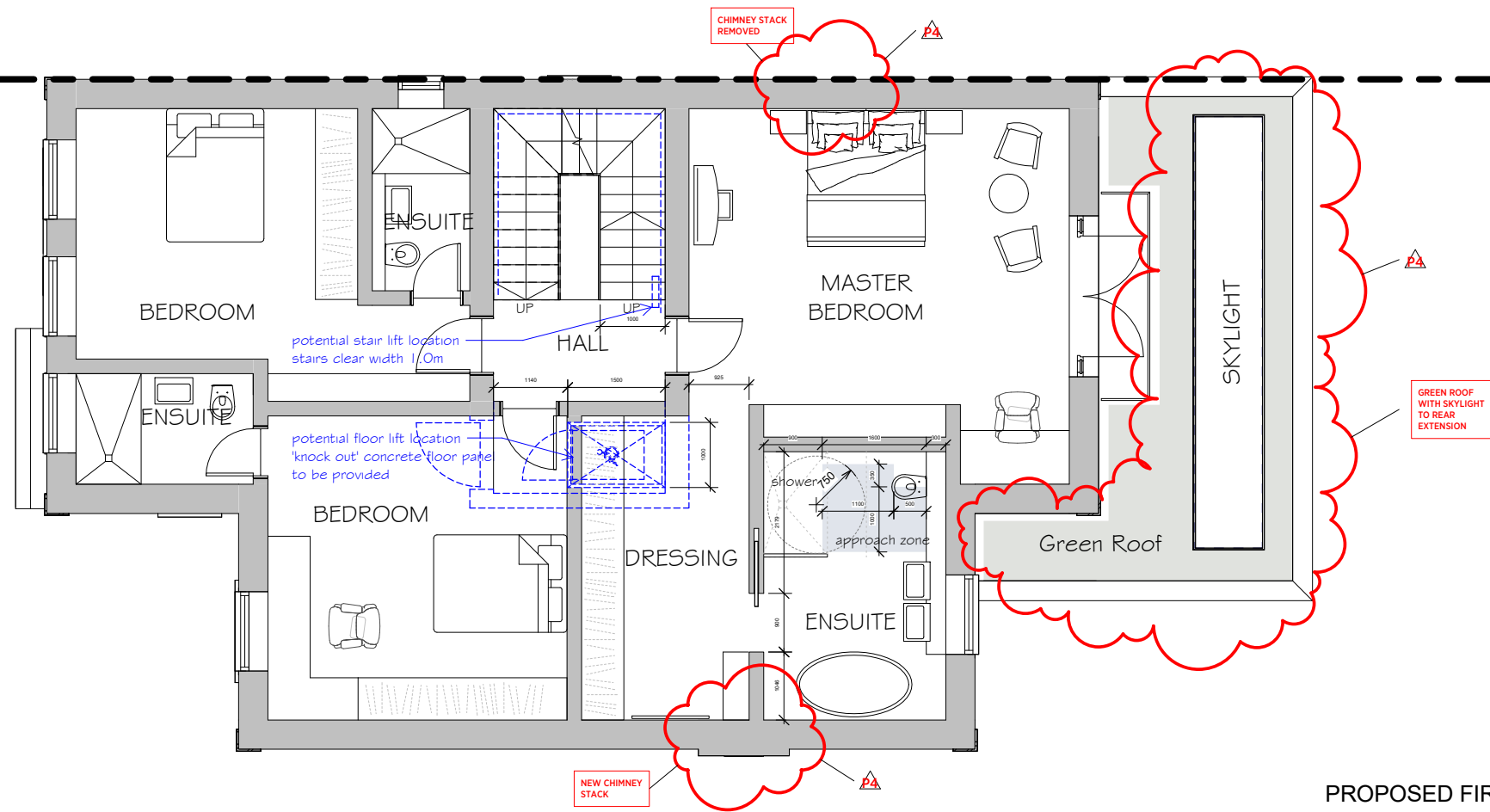
Scale: Status:

Project Ref: NUT Drawing No: 002 Revision: P7

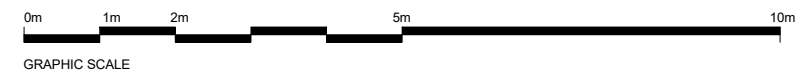
LINE OF SITE BOUNDARY

HOUSE 6A

HOUSE 6B



PROPOSED FIRST FLOOR PLAN



General notes:
This drawing is copyright of KSR architects. This drawing must be read in conjunction with the Designer's Risk Assessment, specification and all other relevant documentation and drawings. KSR architects accept no liability for any expense, loss or damage of whatsoever nature and however arising from any variation made to this drawing or in the execution of the work to which it relates which has not been referred to them and their approval obtained.
Do not scale from this drawing or the digital data, only figured dimensions are to be used. For Planning refer to linear scale.
Check all dimensions on site prior to carrying out any work to avoid any discrepancy

P4	Minor Material Amendment Application	09.02.18	DC
P3	Revised to comply with Lifetime Homes Standard	06.09.12	RS
P2	Entrance canopy design change (House A)	20.07.12	RS
P1	Planning Application Submission	08.05.12	RS

Rev	Description	Date	Chkd
© KSR Architects	Stamp		

PLANNING



KSRARCHITECTS
KSR Architects LLP
14 Gower Street
London WC1E 6BT
t: +44 (0)20 7852 9500
e: info@ksrarchitects.com
w: www.ksrarchitects.com

Project:
6 NUTLEY TERRACE

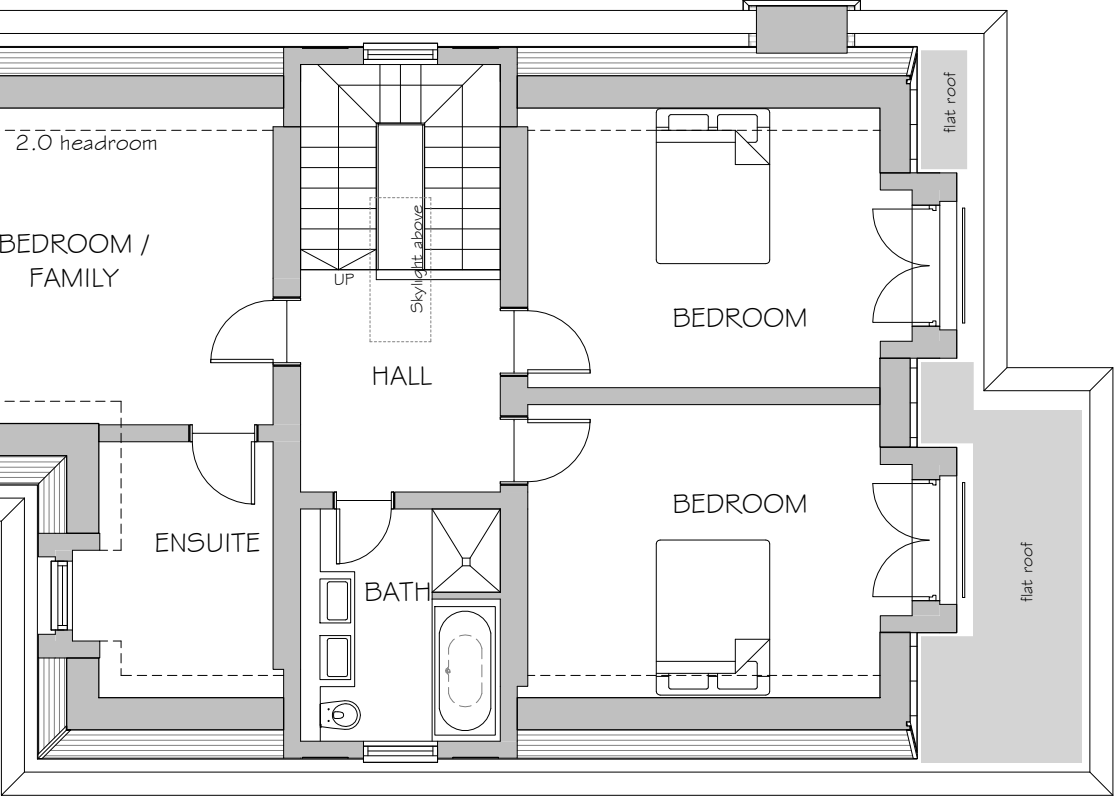
Title:
PROPOSED FIRST FLOOR PLAN

Date:	FEB 2018	Drawn By:	RL	Checked:	DC
Scale:		Status:			

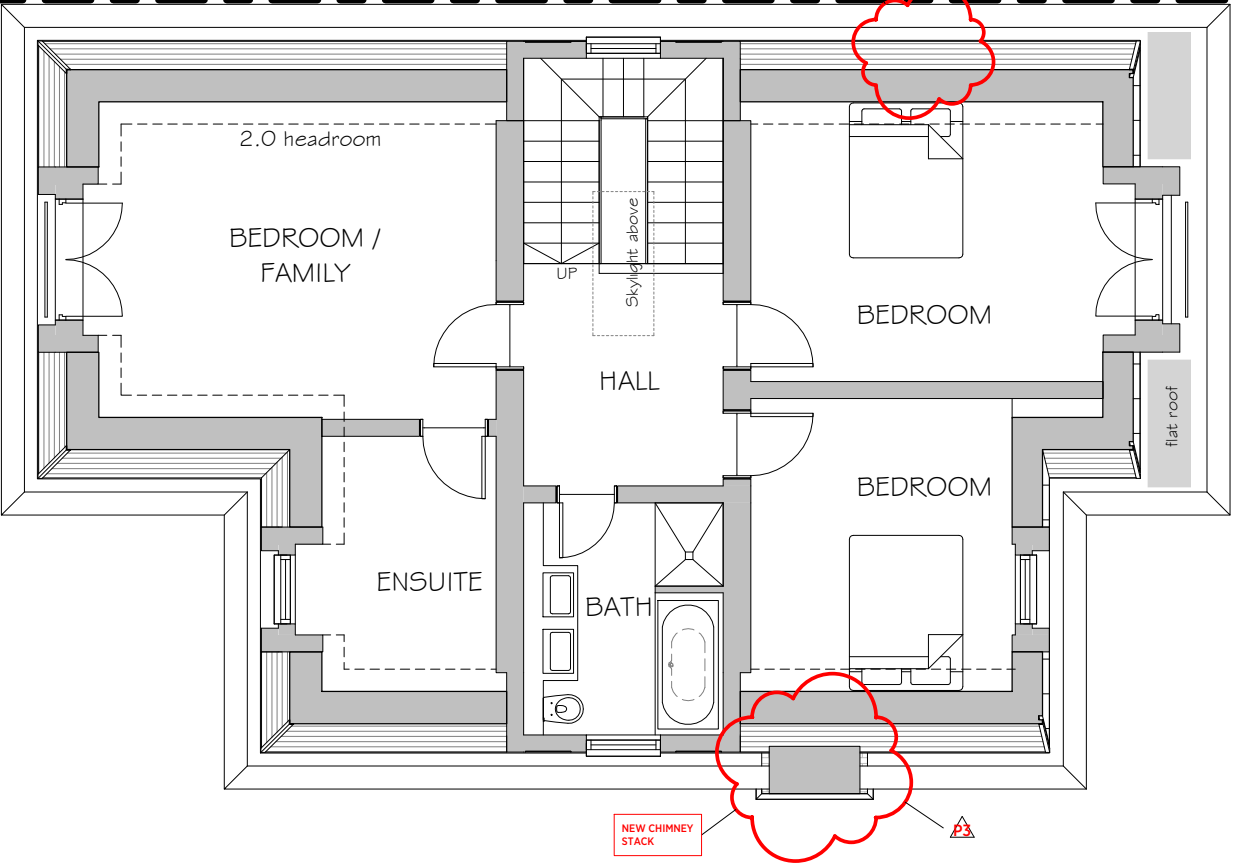
Project Ref:	Drawing No:	Revision:
NUT	003	P4

LINE OF SITE BOUNDARY

HOUSE 6A



HOUSE 6B



PROPOSED SECOND FLOOR PLAN



General notes:
This drawing is copyright of KSR architects. This drawing must be read in conjunction with the Designer's Risk Assessment, specification and all other relevant documentation and drawings. KSR architects accept no liability for any expense, loss or damage of whatsoever nature and however arising from any variation made to this drawing or in the execution of the work to which it relates which has not been referred to them and their approval obtained.
Do not scale from this drawing or the digital data, only figured dimensions are to be used. For Planning refer to linear scale.
Check all dimensions on site prior to carrying out any work.
Note: There is a discrepancy

P1	Minor Material Amendment Application	09.02.18	DC
P2	Entrance canopy design change (House A)	20.07.12	RS
P3	Planning Application Submission	08.05.12	RS

Rev	Description	Date	Chkd
© KSR Architects			
Stamp			

PLANNING

Key Plan



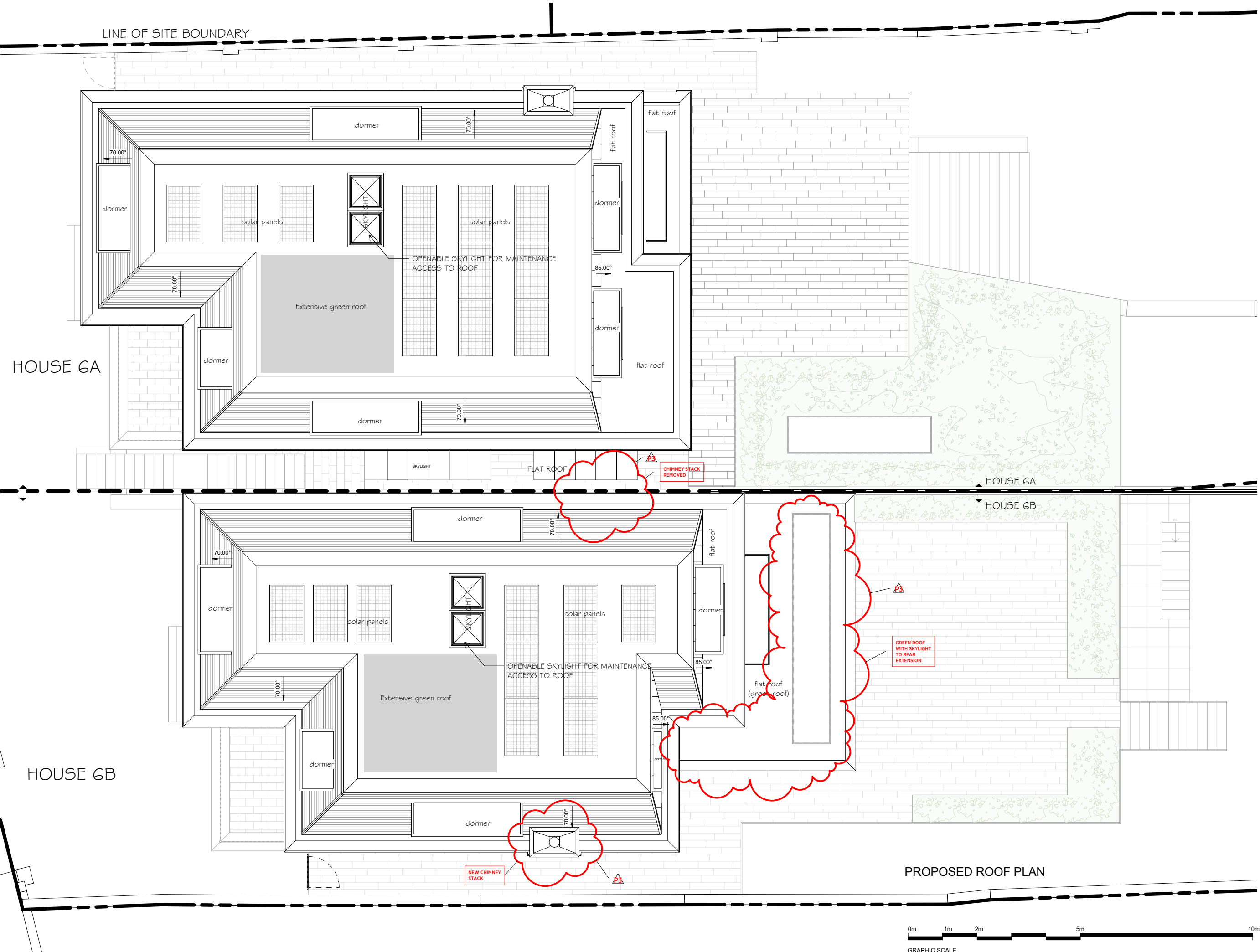
KSRARCHITECTS
KSR Architects LLP
14 Gower Street
London WC1E 6BT
t: +44 (0)20 7882 9500
e: info@ksrarchitects.com
w: www.ksrarchitects.com

Project:
6 NUTLEY TERRACE

Title:
PROPOSED SECOND FLOOR PLAN

Date:	FEB 2018	Drawn By:	RL	Checked:	DC
Scale:		Status:			

Project Ref:	Drawing No:	Revision:
NUT	004	P3



General notes:
This drawing is copyright of KSR architects. This drawing must be read in conjunction with the Designer's Risk Assessment, specification and all other relevant documentation and drawings. KSR architects accept no liability for any expense, loss or damage of whatsoever nature and however arising from any variation made to this drawing or in the execution of the work to which it relates which has not been referred to them and their approval obtained.
Do not scale from this drawing or the digital data, only figured dimensions are to be used. For Planning refer to linear scale.
Check all dimensions on site prior to carrying out any work to avoid any discrepancy

P1	Minor Material Amendment Application	09.02.18	DC
P2	Entrance canopy design change (House A)	20.07.12	RS
P3	Planning Application Submission	08.05.12	RS

Rev	Description	Date	Chkd
-----	-------------	------	------

© KSR Architects
Stamp

PLANNING



KSRARCHITECTS
KSR Architects LLP
14 Gower Street
London WC1E 6BT
t: +44 (0)20 7882 9000
e: info@ksrarchitects.com
w: www.ksrarchitects.com

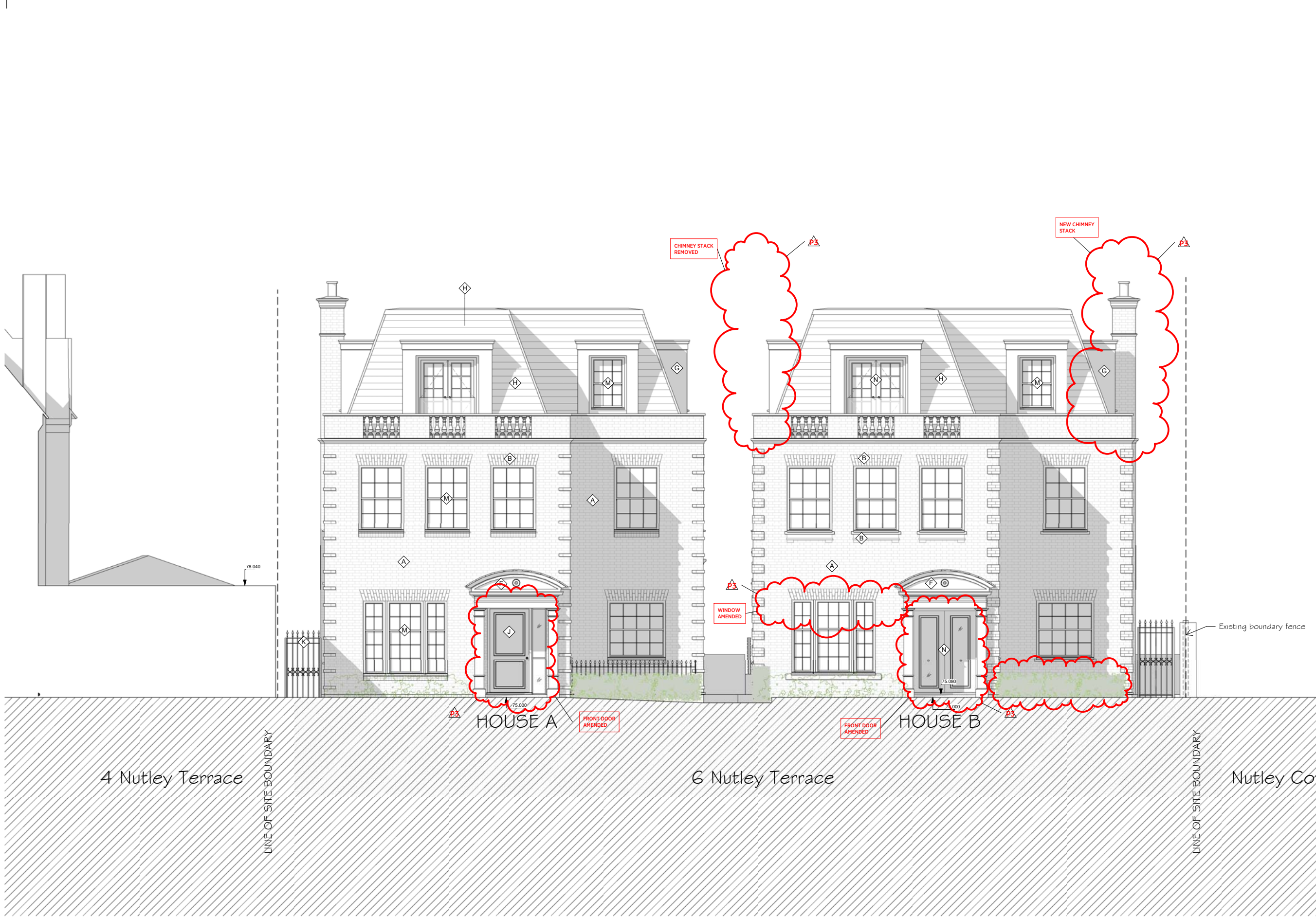
Project:
6 NUTLEY TERRACE

Title:
PROPOSED ROOF PLAN

Date:	FEB 2018	Drawn By:	RL	Checked:	DC
-------	----------	-----------	----	----------	----

Scale:		Status:	
--------	--	---------	--

Project Ref:	Drawing No:	Revision:
NUT	005	P3



General notes:

This drawing is copyright of KSR architects. This drawing must be read in conjunction with the Designer's Risk Assessment, specification and all other relevant documentation and drawings. KSR architects accept no liability for any expense, loss or damage of whatsoever nature and however arising from any variation made to this drawing or in the execution of the work to which it relates which has not been referred to them and their approval obtained.

Do not scale from this drawing or the digital data, only figured dimensions are to be used. For Planning refer to linear scale.

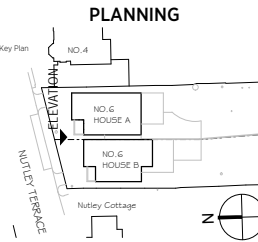
Check all dimensions on site prior to carrying out any works to avoid any discrepancy

KEYNOTE (MATERIAL REFERENCE)

- A FACE MASONRY
- B GLAZED BRICKWORK
- C FAIR FACE BRICKWORK
- D BRICK WALLING
- E CAST STONE COPING
- F CAST STONE DETAILS
- G LEAD LINED DORMER
- H SLATE TILE ROOFING
- J HARDWOOD TIMBER DOOR
- K POWDER COATED METAL RAILING
- L TIMBER GATE/FENCE
- M DOUBLE GLAZED TIMBER SASH WINDOW
- N DOUBLE GLAZED TIMBER DOOR
- P PRIVACY SCREEN

Rev	Description	Date	Chkd
P1	Revised to comply with Lifetime Homes Standard	06.09.12	RS
P2	Entrance canopy design change (House A)	20.07.12	RS
P3	Planning Application Submission	08.05.12	RS

© KSR Architects
Stamp



KSRARCHITECTS
KSR Architects LLP
14 Gower Street
London WC1E 6BT
t +44 (0)20 7882 9500
e mail@ksrarchitects.com
www.ksrarchitects.com

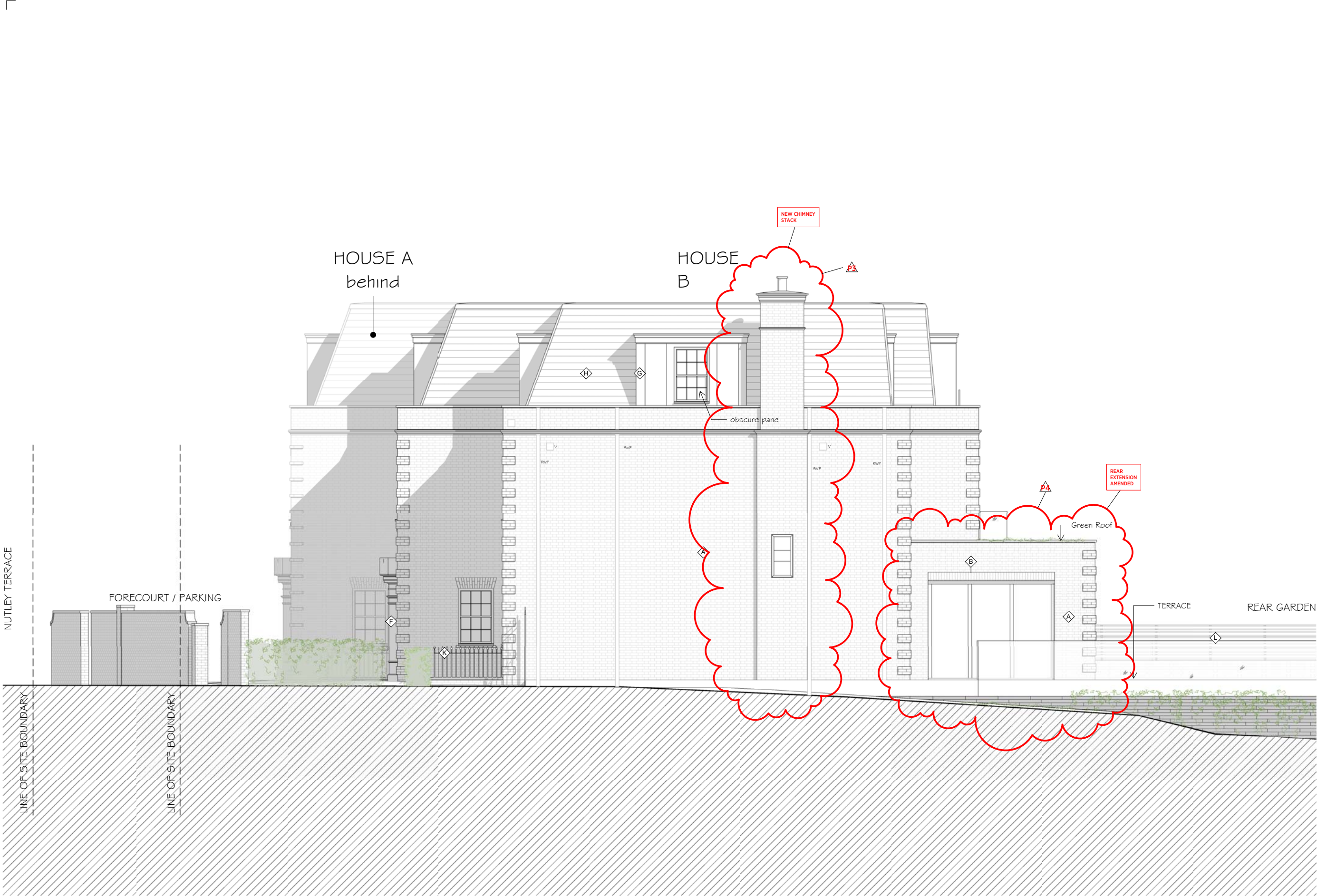
Project:
6 NUTLEY TERRACE

Title:
**PROPOSED FRONT (NORTH)
ELEVATION**

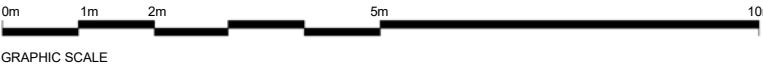
Date: FEB 2018 Drawn By: RL Checked: DC

Scale: Status:

Project Ref: NUT	Drawing No: 011	Revision: P3
----------------------------	---------------------------	------------------------



PROPOSED SIDE (WEST) ELEVATION



General notes:
This drawing is copyright of KSR architects. This drawing must be read in conjunction with the Designer's Risk Assessment, specification and all other relevant documentation and drawings. KSR architects accept no liability for any expense, loss or damage of whatsoever nature and however arising from any variation made to this drawing or in the execution of the work to which it relates which has not been referred to them and their approval obtained.
Do not scale from this drawing or the digital data, only figured dimensions are to be used. For Planning refer to linear scale.
Check all dimensions on site prior to carrying out any works to avoid any discrepancy

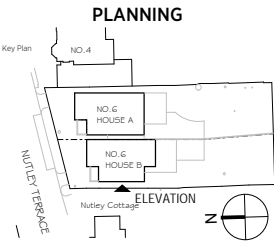
KEYNOTE (MATERIAL REFERENCE)

- A FACE MASONRY
- B GLAZED BRICKWORK
- C FAIR FACE BRICKWORK
- D BRICK WALLING
- E CAST STONE COPING
- F CAST STONE DETAILS
- G LEAD LINED DORMER
- H SLATE TILE ROOFING
- J HARDWOOD TIMBER DOOR
- K POWDER COATED METAL RAILING
- L TIMBER GATE/FENCE
- M DOUBLE GLAZED TIMBER SASH WINDOW
- N DOUBLE GLAZED TIMBER DOOR
- P PRIVACY SCREEN

P4	Minor Material Amendment Application	20.06.18	DC
P3	Minor Material Amendment Application	09.02.18	DC
P2	Entrance canopy design change (House A)	20.07.12	RS
P1	Planning Application Submission	08.05.12	RS

Rev	Description	Date	Child
-----	-------------	------	-------

© KSR Architects
Stamp



KSRARCHITECTS
KSR Architects LLP
14 Gower Street
London WC1E 6BT
t: +44 (0)20 7882 9500
e: info@ksrarchitects.com
w: www.ksrarchitects.com

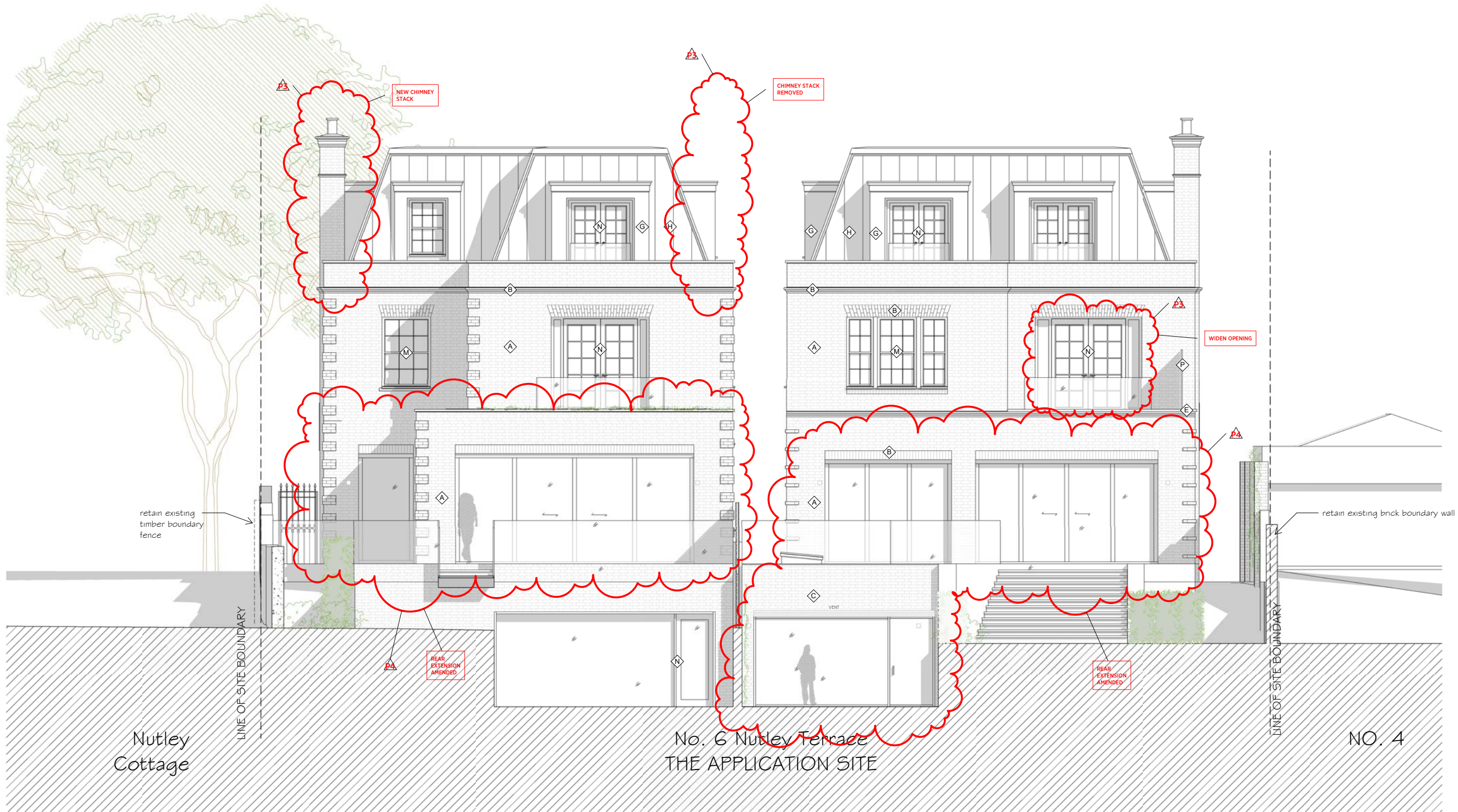
Project:
6 NUTLEY TERRACE

Title:
PROPOSED SIDE (WEST) ELEVATION

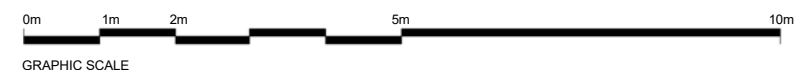
Date: FEB 2018	Drawn By: RL	Checked: DC
----------------	--------------	-------------

Scale:	Status:
--------	---------

Project Ref: NUT	Drawing No: 012	Revision: P4
----------------------------	---------------------------	------------------------



PROPOSED REAR (SOUTH) ELEVATION

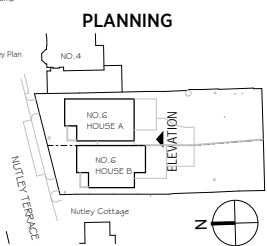


General notes:
This drawing is copyright of KSR architects. This drawing must be read in conjunction with the Designer's Risk Assessment, specification and all other relevant documentation and drawings. KSR architects accept no liability for any expense, loss or damage of whatsoever nature and however arising from any variation made to this drawing or in the execution of the work to which it relates which has not been referred to them and their approval obtained.
Do not scale from this drawing or the digital data, only figured dimensions are to be used. For Planning refer to linear scale.
Check all dimensions on site prior to carrying out any works to avoid any discrepancy

- KEYNOTE (MATERIAL REFERENCE)
- A FACE MASONRY
 - B GLAZED BRICKWORK
 - C FAIR FACE BRICKWORK
 - D BRICK WALLING
 - E CAST STONE COPING
 - F CAST STONE DETAILS
 - G LEAD LINED DORMER
 - H SLATE TILE ROOFING
 - J HARDWOOD TIMBER DOOR
 - K POWDER COATED METAL RAILING
 - L TIMBER GATE/FENCE
 - M DOUBLE GLAZED TIMBER SASH WINDOW
 - N DOUBLE GLAZED TIMBER DOOR
 - P PRIVACY SCREEN

Rev	Description	Date	Child
P4	Minor Material Amendment Application	20.06.18	DC
P3	Minor Material Amendment Application	09.02.18	DC
P2	Entrance canopy design change (House A)	20.07.12	RS
P1	Planning Application Submission	08.05.12	RS

© KSR Architects
Stamp



KSRARCHITECTS
KSR Architects LLP
14 Gower Street
London WC1E 6BT
t: +44 (0)20 7882 8500
e: info@ksrarchitects.com
w: www.ksrarchitects.com

Project:
6 NUTLEY TERRACE

Title:
PROPOSED REAR (SOUTH) ELEVATION

Date: FEB 2018	Drawn By: RL	Checked: DC
Scale:	Status:	

Project Ref: NUT	Drawing No: 013	Revision: P4
----------------------------	---------------------------	------------------------



PROPOSED SIDE (EAST) ELEVATION



General notes:
This drawing is copyright of KSR architects. This drawing must be read in conjunction with the Designer's Risk Assessment, specification and all other relevant documentation and drawings. KSR architects accept no liability for any expense, loss or damage of whatsoever nature and however arising from any variation made to this drawing or in the execution of the work to which it relates which has not been referred to them and their approval obtained.
Do not scale from this drawing or the digital data, only figured dimensions are to be used. For Planning refer to linear scale.
Check all dimensions on site prior to carrying out any works to avoid any discrepancy

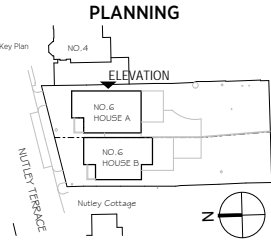
KEYNOTE (MATERIAL REFERENCE)

- A FACE MASONRY
- B GUAGED BRICKWORK
- C FAIR FACE BRICKWORK
- D BRICK WALLING
- E CAST STONE COPING
- F CAST STONE DETAILS
- G LEAD LINED DORMER
- H SLATE TILE ROOFING
- J HARDWOOD TIMBER DOOR
- K POWDER COATED METAL RAILING
- L TIMBER GATE/FENCE
- M DOUBLE GLAZED TIMBER SASH WINDOW
- N DOUBLE GLAZED TIMBER DOOR
- P PRIVACY SCREEN

P2	Entrance canopy design change (House A)	20.07.12	RS
P1	Planning Application Submission	08.05.12	RS

Rev	Description	Date	Chkd
-----	-------------	------	------

© KSR Architects
Stamp



KSRARCHITECTS

KSR Architects LLP
14 Gower Street
London WC1E 6BT
t: +44 (0)20 7882 9000
e: info@ksrarchitects.com
w: www.ksrarchitects.com

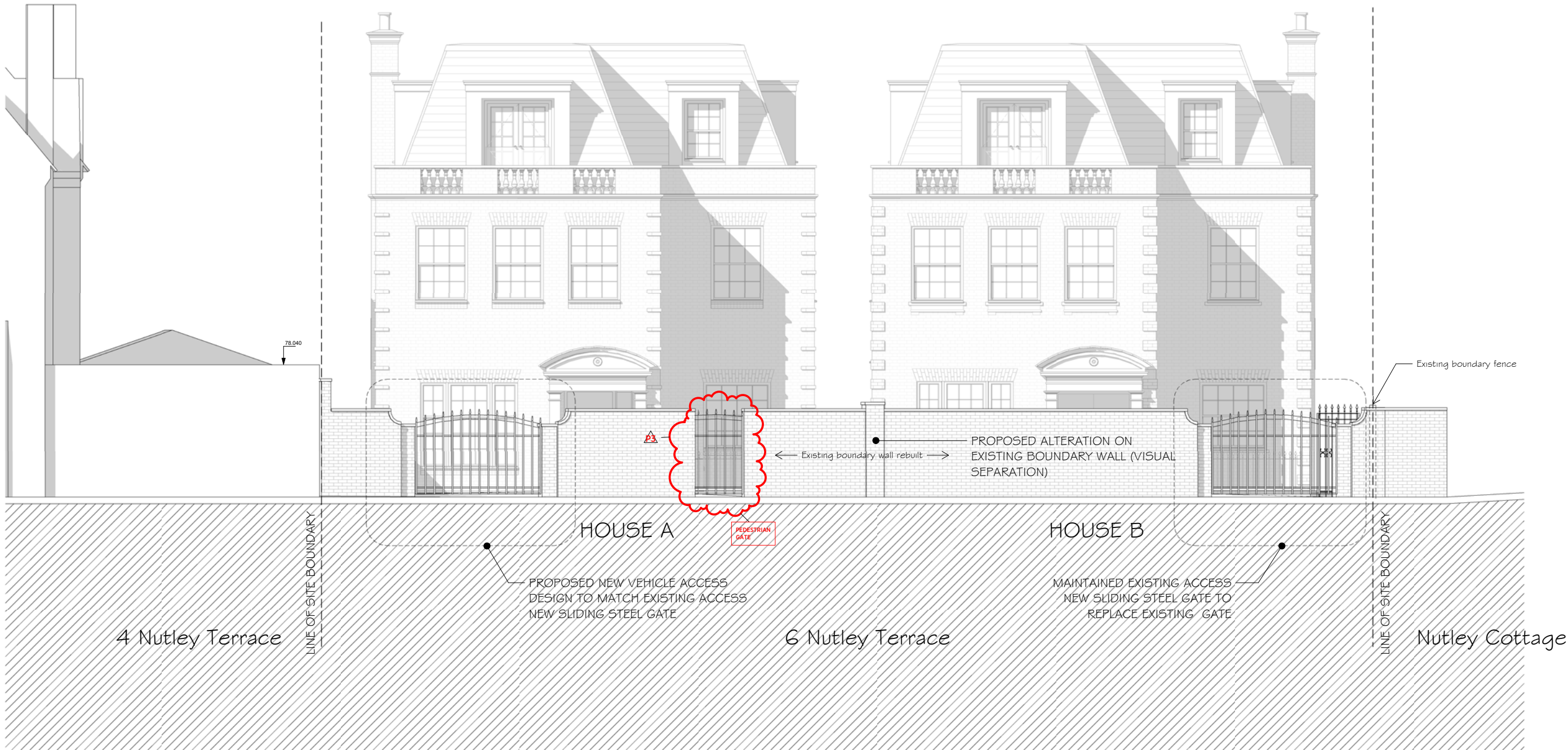
Project:
6 NUTLEY TERRACE

Title:
PROPOSED SIDE (EAST) ELEVATION

Date: FEB 2018	Drawn By: RL	Checked: DC
----------------	--------------	-------------

Scale:	Status:
--------	---------

Project Ref	Drawing No	Revision
NUT	014	P2



PROPOSED FRONT (NORTH) ELEVATION WITH BOUNDARY TREATMENT

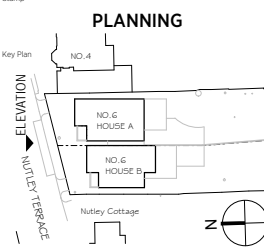


General notes:
This drawing is copyright of KSR architects. This drawing must be read in conjunction with the Designer's Risk Assessment, specification and all other relevant documentation and drawings. KSR architects accept no liability for any expense, loss or damage of whatsoever nature and however arising from any variation made to this drawing or in the execution of the work to which it relates which has not been referred to them and their approval obtained.
Do not scale from this drawing or the digital data, only figured dimensions are to be used. For Planning refer to linear scale.
Check all dimensions on site prior to carrying out any work to avoid any discrepancy

P1	Minor Material Amendment Application	09.02.18	DC
P2	Entrance canopy design change (House A)	20.07.12	RS
P3	Planning Application Submission	08.05.12	RS

Rev	Description	Date	Chkd
-----	-------------	------	------

© KSR Architects
Stamp



KSRARCHITECTS
KSR Architects LLP
14 Gower Street
London WC1E 6BT
t: +44 (0)20 7882 9500
e: mail@ksrarchitects.com
www.ksrarchitects.com

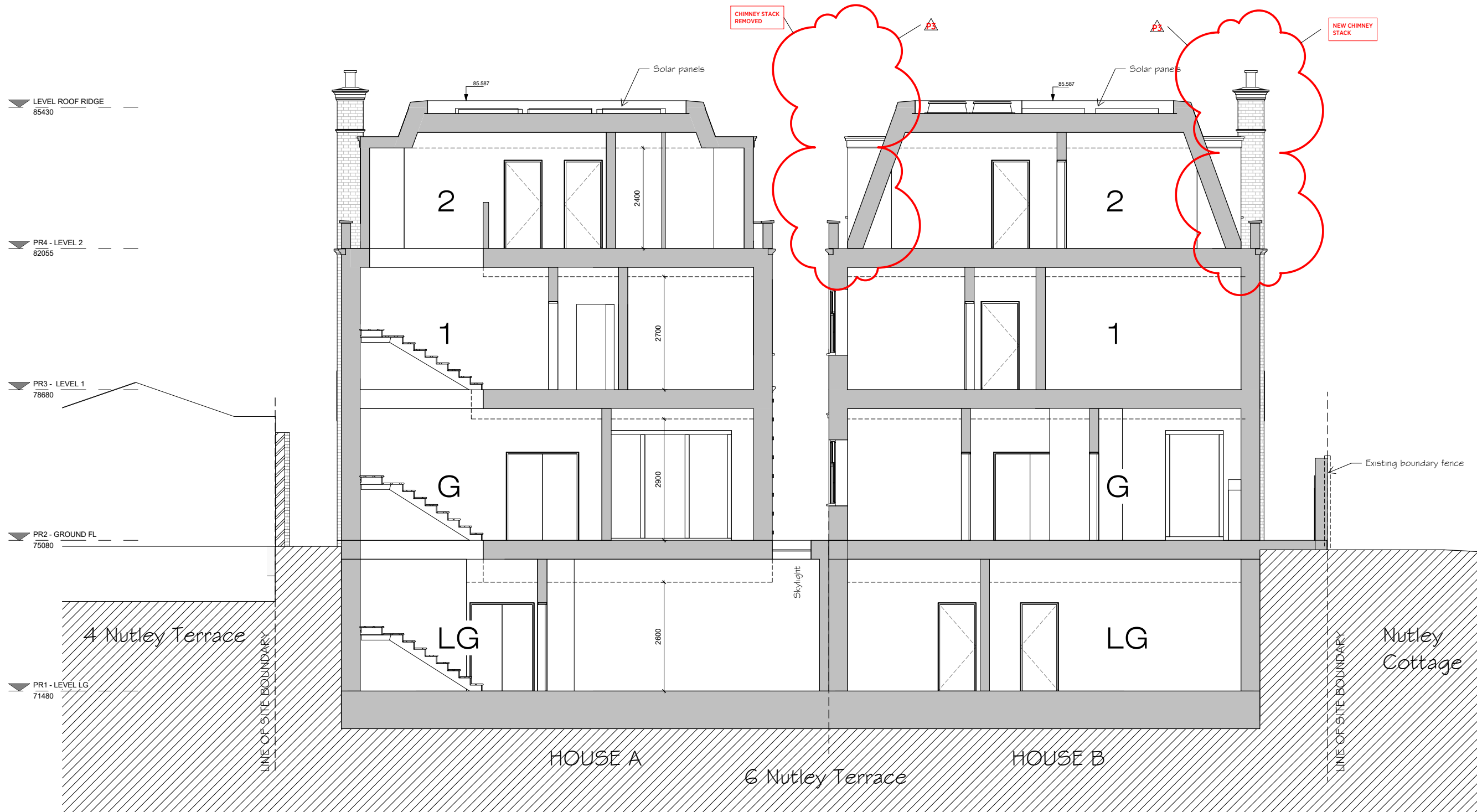
Project:
6 NUTLEY TERRACE

Title:
**PROPOSED FRONT (NORTH)
ELEVATION WITH BOUNDARY
TREATMENT**

Date: 14th May 2022 Drawn By: SHY Checked: RS

Scale: Status:

Project Ref: NUT	Drawing No: 010	Revision: P3
----------------------------	---------------------------	------------------------



PROPOSED SECTION AA (HOUSE A,B)



General notes:

This drawing is copyright of KSR architects. This drawing must be read in conjunction with the Designer's Risk Assessment, specification and all other relevant documentation and drawings. KSR architects accept no liability for any expense, loss or damage of whatsoever nature and however arising from any variation made to this drawing or in the execution of the work to which it relates which has not been referred to them and their approval obtained.

Do not scale from this drawing or the digital data, only figured dimensions are to be used. For Planning refer to linear scale.

Check all dimensions on site prior to carrying out any works to avoid any discrepancy

PLANNING

Key Plan

NO.4

NO.6 HOUSE A

NO.6 HOUSE B

Nutley Cottage

NUTLEY TERRACE

KSRARCHITECTS

KSR Architects LLP
14 Gower Street
London WC1E 6BT

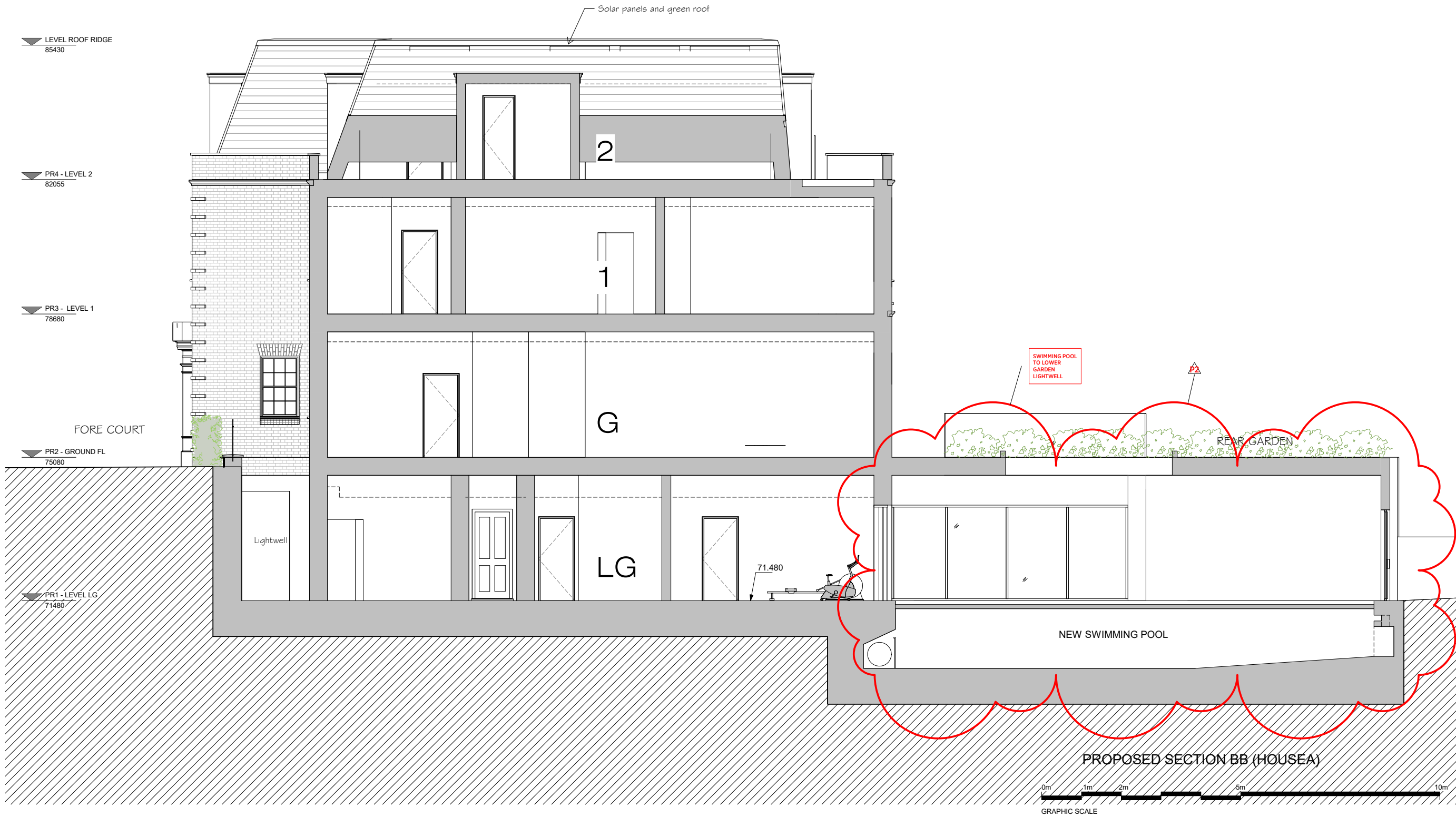
mail@ksrarchitects.com
t: +44 (0)20 7882 9500
www.ksrarchitects.com

Project:
6 NUTLEY TERRACE

Title:
PROPOSED SECTION AA

Date: FEB 2018	Drawn By: RL	Checked: DC
Scale:	Status:	

Project Ref: NUT	Drawing No: 006	Revision: P3
----------------------------	---------------------------	------------------------



General notes:

This drawing is copyright of KSR architects. This drawing must be read in conjunction with the Designer's Risk Assessment, specification and all other relevant documentation and drawings. KSR architects accept no liability for any expense, loss or damage of whatsoever nature and however arising from any variation made to this drawing or in the execution of the work to which it relates which has not been referred to them and their approval obtained.

Do not scale from this drawing or the digital data, only figured dimensions are to be used. For Planning refer to linear scale.

Check all dimensions on site prior to carrying out any work to avoid any discrepancy

NO. 6 HOUSE A

NO. 6 HOUSE B

NUTLEY TERRACE

Nutley Cottage

PLANNING

Key Plan

NO. 4

NO. 6 HOUSE A

NO. 6 HOUSE B

Nutley Cottage

z

KSRARCHITECTS

KSR Architects LLP
14 Gower Street
London WC1E 6BT

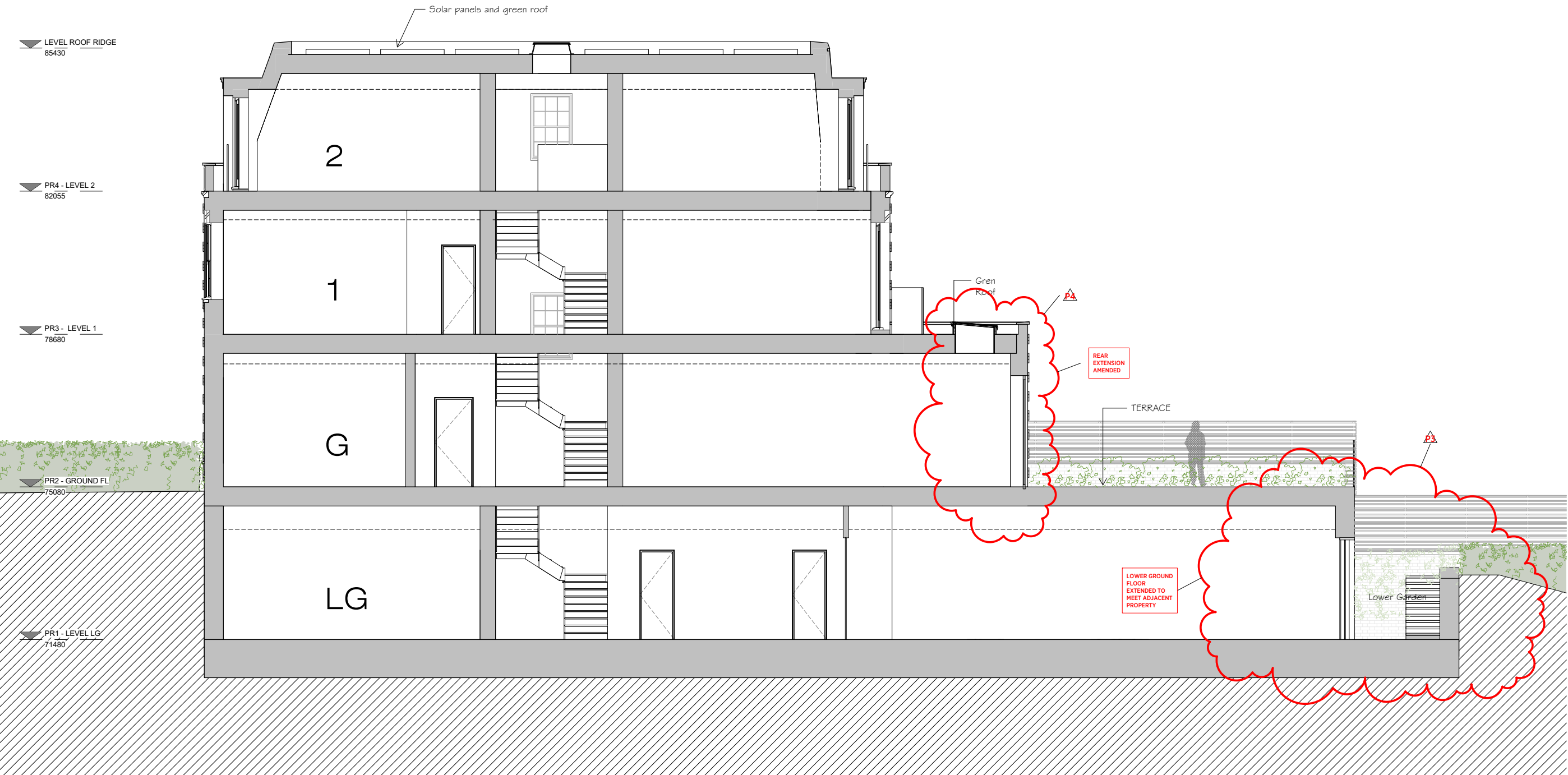
mail@ksrarchitects.com
t: +44 (0)20 7882 9500
www.ksrarchitects.com

Project:
6 NUTLEY TERRACE

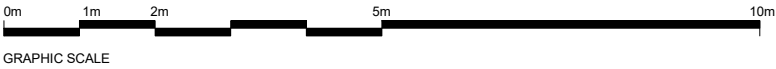
Title:
PROPOSED SECTION BB

Rev	Description	Date	Chkd
P1	Minor Material Amendment Application	09/02/18	DC
P1	Planning Application Submission	08/05/17	RS

Project Ref	Drawing No	Revision
NUT	007	P2



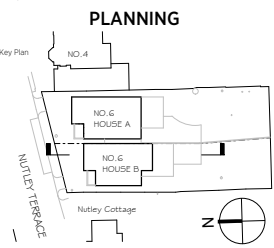
PROPOSED SECTION CC (HOUSE B)



General notes:
This drawing is copyright of KSR architects. This drawing must be read in conjunction with the Designer's Risk Assessment, specification and all other relevant documentation and drawings. KSR architects accept no liability for any expense, loss or damage of whatsoever nature and however arising from any variation made to this drawing or in the execution of the work to which it relates which has not been referred to them and their approval obtained.
Do not scale from this drawing or the digital data, only figured dimensions are to be used. For Planning refer to linear scale.
Check all dimensions on site prior to carrying out any work to avoid any discrepancy

Rev	Description	Date	Chkd
P4	Minor Material Amendment Application	20.06.18	DC
P3	Minor Material Amendment Application	09.02.18	DC
P2	Entrance canopy design change (House A)	20.07.12	RS
P1	Planning Application Submission	08.05.12	RS

© KSR Architects
Stamp



KSRARCHITECTS
KSR Architects LLP
14 Gower Street
London WC1E 6BT
t: +44 (0)20 7882 9500
e: info@ksrarchitects.com
w: www.ksrarchitects.com

Project:
6 NUTLEY TERRACE

Title:
**PROPOSED SECTION CC
HOUSE B**

Date:	MAY 2012	Drawn By:	SHY	Checked:	RS
Scale:		Status:			

Project Ref:	Drawing No:	Revision:
NUT	008	P4