

A1

A

B

C

D

E

F

G

H

I

J

K

L

M

N

1

2

3

4

5

6

7

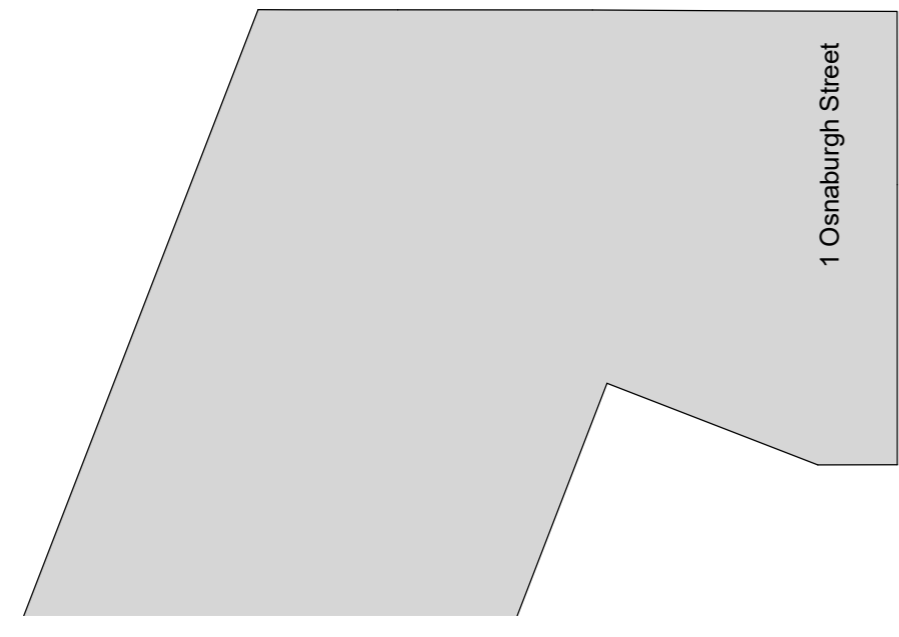
8

9

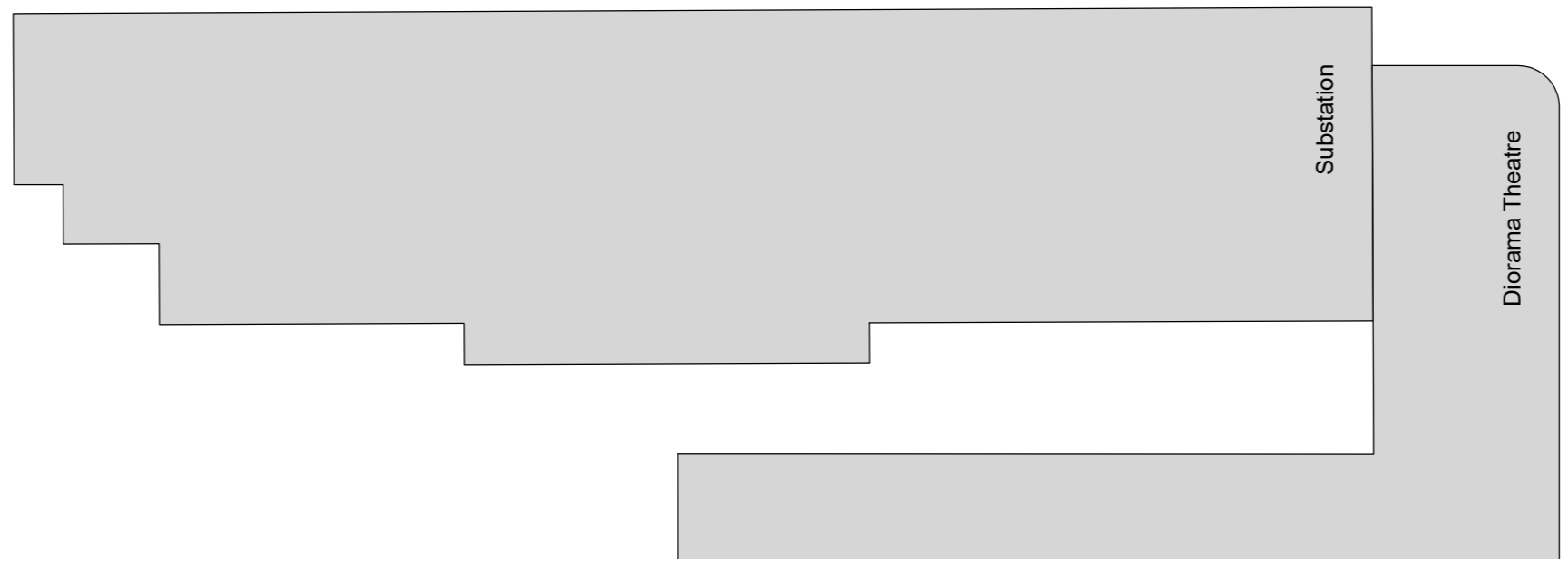
10

11

St. Anne's
(See MLA drawings)

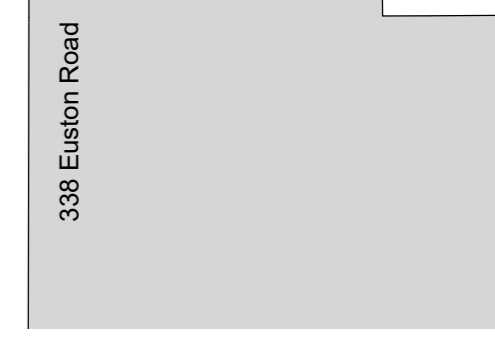


1 Osnaburgh Street



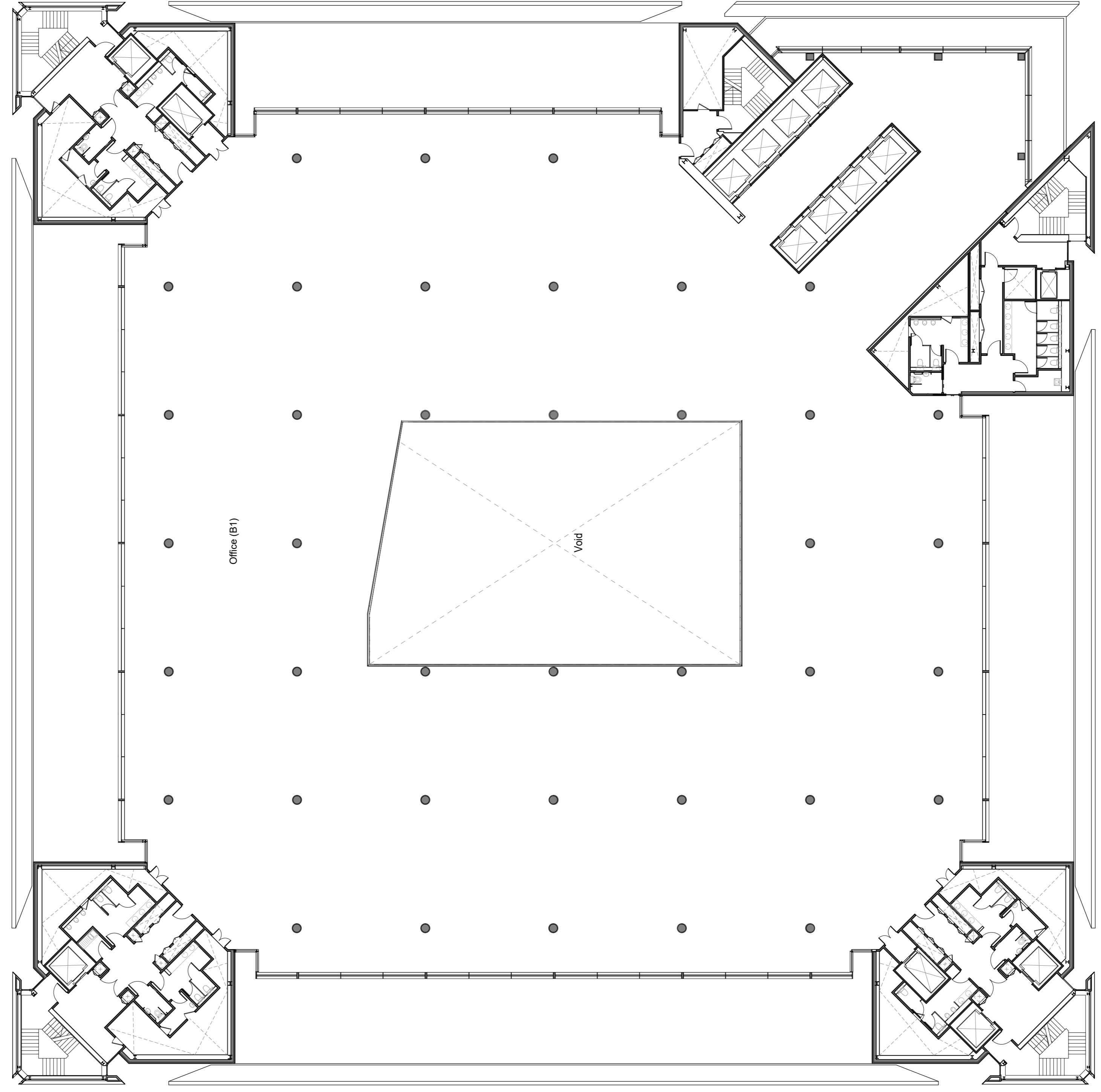
Substation

Diorama Theatre



338 Euston Road

2 Triton Square



Office (B1)

Void

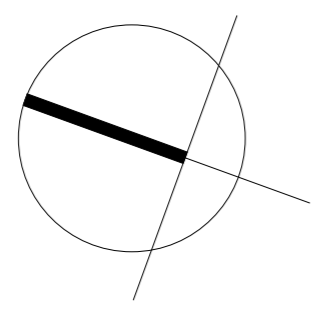
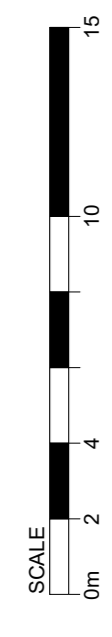
10 Brock Street

FIGURED DIMENSIONS ONLY TO BE USED

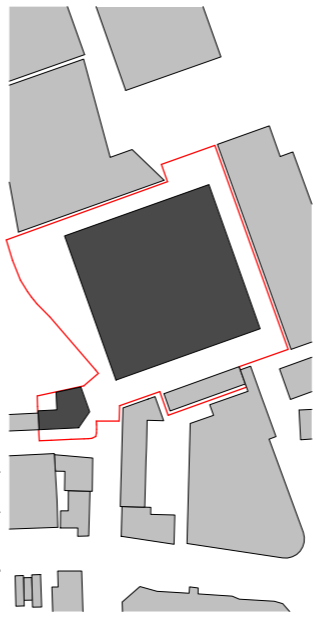
Safety, Health and Environmental Information

In addition to the hazards/risks normally associated with the types of work detailed on this drawing and noted in the designer risk assessments and health and safety plan, note the following:

- It is assumed that all works on this drawing will be carried out by a competent contractor working, where appropriate, to an approved method statement.
- Where applicable, significant residual risks are highlighted in the body of the drawing.



Issue	Date	Issued for Planning
P01	10/04/18	Issued for Planning



ARUP ASSOCIATES

8 Fitzroy Street
London
W1T 4BJ
tel: 020 7765 2525
fax: 020 7755 2561
email: info@arupassociates.com

Client
British Land Property Management Limited

Job Title
1 Triton Square and St. Anne's

Drawing Title
**1 Triton Square
General Arrangement Plan
Eighth Floor
Proposed**

Scale: as A1	1:200
Discipline	Architecture
Job No	Drawing Status
246868	Planning
Drawing No	Issue
246868_A-XX-08-DR-AX-31008	P01