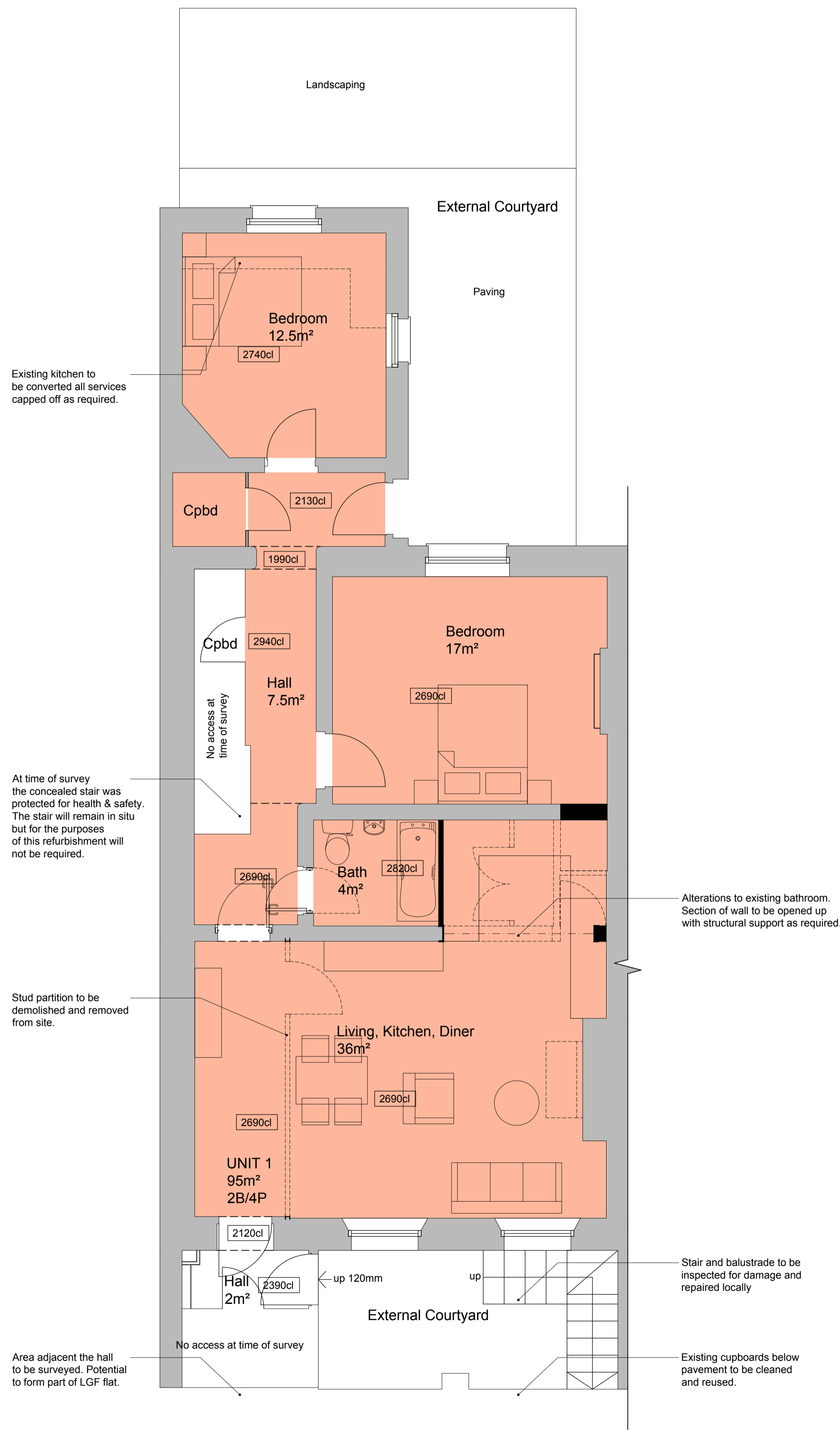
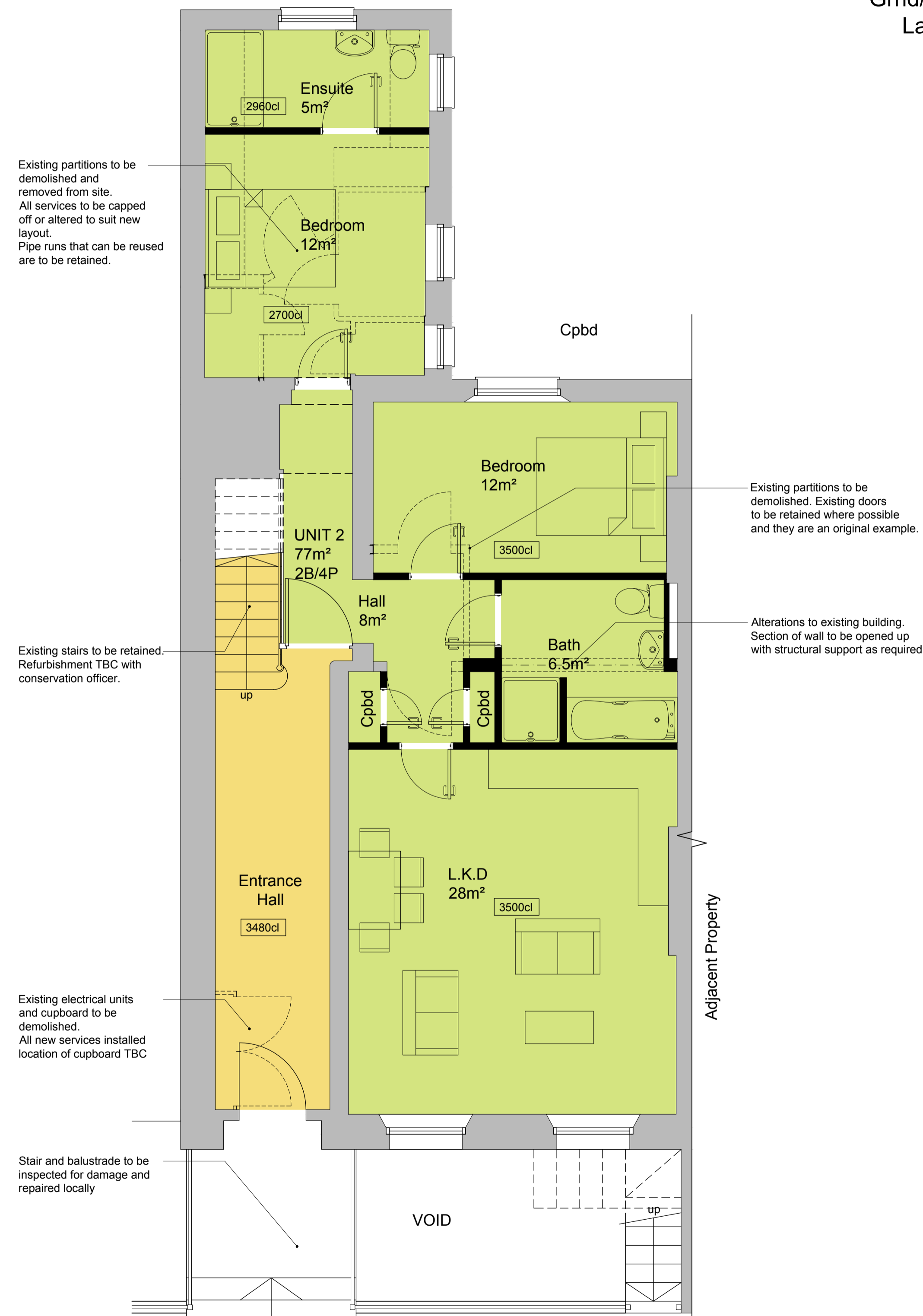


Grnd/1st Floor Landing

- Landlord / Circulation
- Unit 1 = 2 Bed / 4 Person Flat @ 95m²
- Unit 2 = 2 Bed / 4 Person Flat @ 77m²
- Unit 3 = 2 Bed / 3 Person Flat @ 83m²
- Unit 4 = 2 Person Studio @ 20m²
- Unit 5 = 2 Bed / 4 Person Flat @ 65m²
- Unit 6 = 2 Bed / 4 Person Flat @ 61m²
- Unit 7 = Existing Flat (not in scope)



Lower Ground Floor



Ground Floor

P1	First Issue	07/06/18	LH	LH
Rev	Description	Date	Chk	Appr
Project No:	Scale @ A1:	As Indicated	Drawn By:	LH



Vision, form and function
Project:
1, Tavton Street Refurbishment
Euston
London
WC1H 0BT
Client:
University of London

Title:
Proposed Lower Grnd, Ground Floor Plans

Drawing Number:
TAV - IW - XX - XX - DR - A - 2301

Status:	Purpose of Issue:	Revision:
S2	Information	P1