

NOTE:

ENSURE NO STRIP OUT, DEMOLITION OR BUILDING WORKS ARE UNDERTAKEN WITHOUT THE REQUIRED LISTED BUILDING AND PLANNING CONSENTS FROM THE LOCAL AUTHORITY.

IT IS AN OFFENCE TO CARRY OUT WORKS THAT REQUIRE LISTED BUILDING CONSENT WITHOUT SUCH CONSENT BEING OBTAINED.

DRAWINGS TO BE READ IN CONJUNCTION WITH:

- ARCHITECTURAL SCHEDULES AND SPECIFICATIONS.
- STRUCTURAL DRAWINGS AND SPECIFICATIONS.
- M&E DRAWINGS AND SPECIFICATIONS.
- ACOUSTIC REPORTS.
- FIRE STRATEGY.
- HERITAGE REPORT.
- SPECIALIST FACADE REPORT.
- IT/AV SPECIALIST DRAWINGS AND SPECIFICATIONS.
- LIFT SPECIALIST DRAWINGS AND SPECIFICATIONS.

THE MAIN CONTRACTOR IS TO SURVEY/TEST ACOUSTIC, FIRE AND THERMAL PROPERTIES OF EXISTING WALLS TO DETERMINE INTERNAL LINING REQUIREMENTS.

GENERAL NOTES



THIS DRAWING IS THE COPYRIGHT OF MACE DESIGN. DO NOT SCALE THIS DRAWING. ALL DIMENSIONS TO BE CHECKED ON SITE BEFORE ANY WORKS PROCEED.

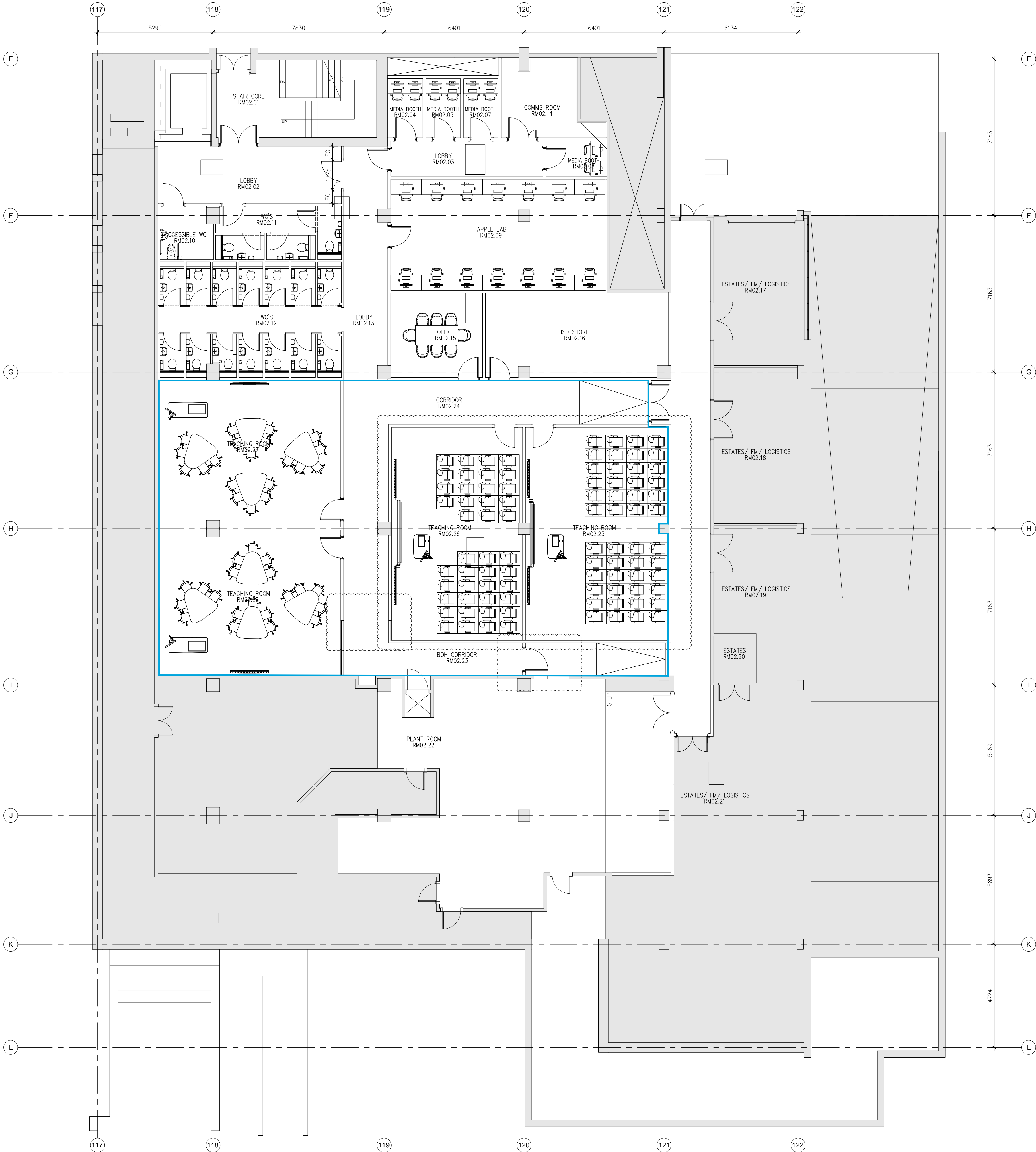
THE CONTRACTOR IS TO PROVIDE FULL SIZE SETTING OUT DRAWINGS BASED ON THE INFORMATION CONTAINED IN THIS DRAWING FOR THE DESIGNERS APPROVAL PRIOR TO COMMENCING MANUFACTURE.

THE DRAWING IS ISSUED ON THE CONDITION THAT IT IS NOT REPRODUCED, RETAINED OR DISCLOSED TO ANY UNAUTHORISED PERSON EITHER WHOLLY OR IN PART WITHOUT THE WRITTEN CONSENT OF MACE DESIGN.

THIS DRAWING SHOULD BE READ IN CONJUNCTION WITH ALL RELATED DRAWINGS AND SPECIFICATIONS. ALL WORK IS TO BE CARRIED OUT IN ACCORDANCE WITH THE APPROPRIATE BUILDING REGULATIONS AND CODE OF PRACTICE WHERE SUCH EXIST AND GENERALLY TO CONFORM WITH GOOD BUILDING PRACTICE.

GENERAL ARRANGEMENT PLAN LEGEND:

SYMBOL	DESCRIPTION
	AREAS OUTSIDE OF SCOPE.
	NEW TEACHING SPACE IN PREVIOUSLY APPROVED BAR AREA AS PART OF PHASE 1A.



P04	13.04.2017	Issued for information. Furniture to rooms RM02.25 and RM02.26 changed to suit AV proposal. Double door changed to single.	RA
P03	18.12.2017	Issued for information. Final Layout omitted from drawing title. WC block partition setting out updated. Apple Lab, Comms Room and Media Booths updated to reflect E&I DIB. Plant Room RM02.22 enlarged. Estates Room RM RM02.21 reduced in size to accommodate. New partition added to opening of removed double door to Plant Room RM02.22. BOH corridor shown within scope.	TP
P02	01.11.2017	Issued for information. Legend updated. Areas outside of scope hatched. Layout updated in Media Booths, Apple Lab & Comms Room.	TP
P01	27.10.2017	Issued for information.	TP
-	11.10.2017	Issued for information.	TP
REV	DATE	DESCRIPTION	BY



PROJECT
UCL IOE PHASE 1B
20 BEDFORD WAY, WC1H 0AL

CLIENT
UCL IOE

LOCATION
LEVEL 2 WING

DRAWING TITLE
GENERAL ARRANGEMENT PLAN

STATUS INFORMATION		SCALE 1:100 @ A1
DRAWN BY TP	CHECKED BY RA	DATE 15.09.2017
DRAWING NUMBER UCL-IOE-0100-WA-02-DR-A-72-0001	REVISION P04	