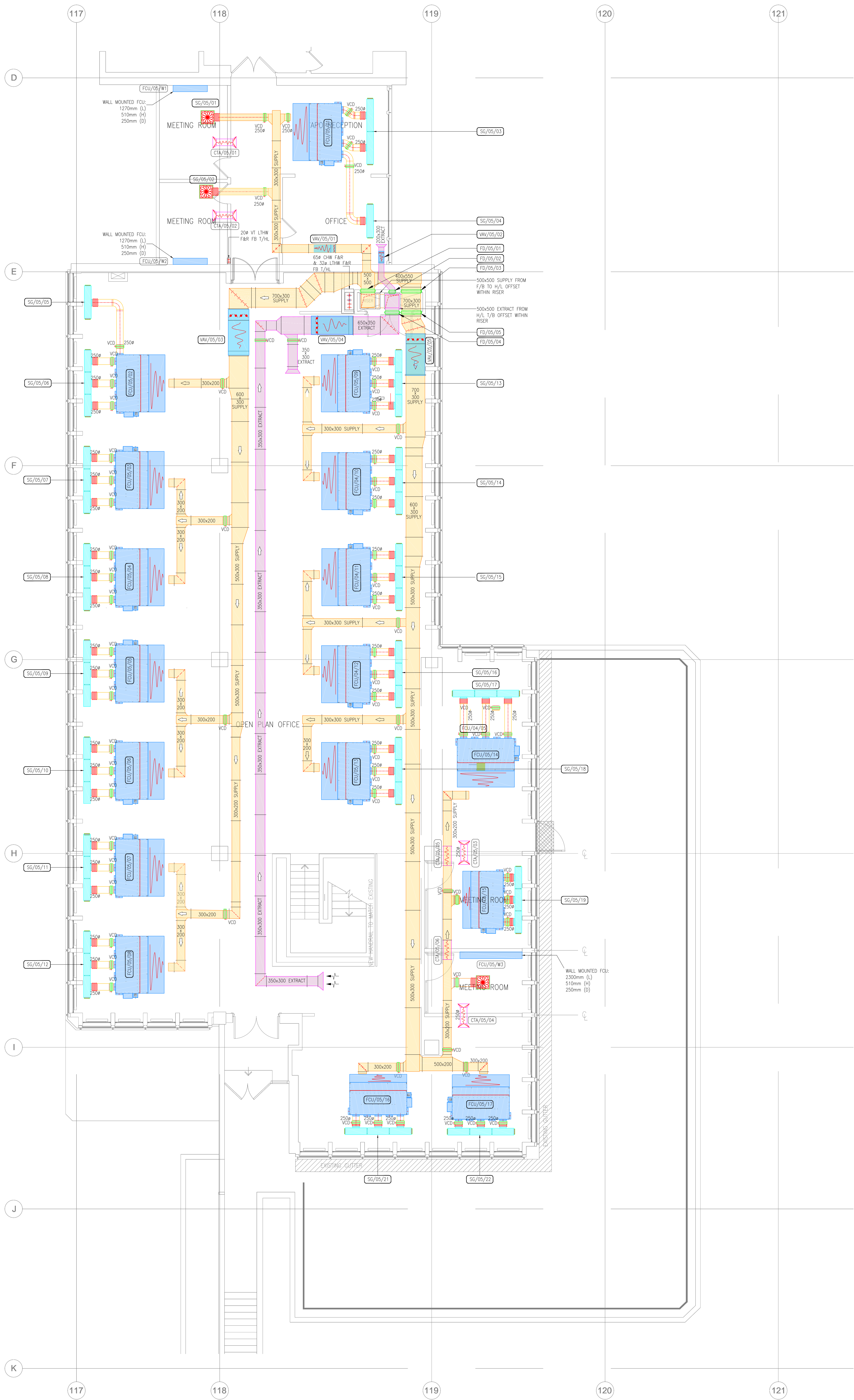


NOTES

- THIS DRAWING SHALL BE READ IN CONJUNCTION WITH THE ARCHITECTURAL, PUBLIC HEALTH, ELECTRICAL AND STRUCTURAL ENGINEERS' DRAWINGS.
- THIS DRAWING SHOWS DESIGN INTENT. IT IS NOT A CONSTRUCTION DRAWING AND IT IS THE CONTRACTORS RESPONSIBILITY TO PROVIDE A FULLY COORDINATED INSTALLATION INCORPORATING THIS INSTALLATION AND OTHER SERVICES.
- THIS DRAWING SHALL BE READ IN CONJUNCTION WITH ALL TECHNICAL DOCUMENTATION, SCHEDULES, LEGENDS AND STANDARD DETAILS.
- DO NOT SCALE FROM THIS DRAWING.
- FINAL ACCESS AND SETTING OUT OF SERVICES AND GRILLES TO BE AGREED WITH THE ARCHITECT.
- THE CONTRACTOR SHALL REFER TO THE ARCHITECT'S DRAWINGS DETAILING FIRE COMPARTMENTATION.
- THE CONTRACTOR SHALL ENSURE THAT ALL DUCTWORK AND DIFFUSER PLenums ARE SUFFICIENTLY TO ENSURE LOW VELOCITY AND NOISE LEVELS.
- THE BUILDING SERVICES SUB-CONTRACTOR SHALL REFER TO THE SCHEMATICS, SPECIFICATIONS AND CONTRACT DOCUMENTATION FOR THE LOCATIONS OF DUCTWORK MOUNTED COMPONENTS: (ATTENUATORS/ CROSS TALK ATTENUATORS (CTAs), VARIABLE AIR VOLUME (VAVs), VCDs, FIRE AND MOTORISED FIRE SMOKE DAMPERS, AND VARIABLE AIR VOLUME CONTROLS. THIS LIST IS NON EXHAUSTIVE.
- THERMAL INSULATION IS NOT SHOWN ON FOR CLARITY. ALTHOUGH ALL INSULATION SHALL BE DETAILED AS IN THE BUILDING SERVICES SPECIFICATION.
- ALL GRILLES AND DIFFUSERS ARE TO BE CO-ORDINATED WITH THE CEILING GRID, LIGHTING LAYOUT AND OTHER CEILING MOUNTED FITMENTS.
- ALL VOLUME CONTROL DAMPERS TO BE OPPOSED BLADE TYPE.
- ALL DUCTWORK SHALL BE IN ACCORDANCE WITH HVAC DW144 SPECIFICATION.
- ALL RECTANGULAR BENDS TO HAVE TURNING BLADES.
- ALL SHEET METAL DUCTWORK SHALL BE PROVIDED WITH ACCESS DOORS IN COMPLIANCE WITH RECOMMENDATIONS MADE WITHIN HVCA PUBLICATION "CLEANLINESS OF VENTILATION SYSTEMS" TR/19 AS THAT DESCRIBED WITHIN THE SPECIFICATION ALL POSITIONS OF ACCESS DOORS SHALL BE FULLY DETAILED ON THE BUILDING SERVICES SUB CONTRACTOR'S WORKING DRAWINGS.
- THE BUILDING SERVICES CONTRACTOR SHALL INCLUDE FOR ALL SECONDARY SUPPORT STEELWORK NECESSARY FOR SERVICES SUPPORTS ETC.
- THERMAL INSULATION IS NOT SHOWN FOR CLARITY. ALL SECONDARY SUPPLY DUCTWORK IS TO BE THERMALLY INSULATED.
- BRACKETS AND SUPPORTS ARE NOT SHOWN FOR CLARITY. ALL NECESSARY SUPPORTS / BRACKETING FOR DUCTWORK, PLANT, ETC IS TO BE INCLUDED FOR.
- REFERENCE SHALL BE MADE TO THE ARCHITECT'S LAYOUTS PRIOR TO THE POSITIONING OF SERVICES TO ENSURE FULL CO-ORDINATION.
- THE CONTRACTOR IS TO PROVIDE ALL NECESSARY TOOLS/LABOUR, MATERIALS TO SUPPLY, INSTALL, PUT INTO OPERATION AND COMMISSIONING OF SYSTEMS.
- THE MAIN CONTRACTOR SHALL PROVIDE ACCESS PANELS WITHIN THE CEILING CONSTRUCTION TO ALLOW ACCESS (FOR COMMISSIONING AND MAINTENANCE PURPOSES) TO VALVES, DAMPERS ETC. REFER TO SPECIFICATION FOR DETAILS.
- WHERE SERVICES PENETRATE FIRE BARRIERS, SUITABLE FIRE DAMPERS SHALL BE INSTALLED. MOTORISED FIRE SMOKE DAMPERS SHALL BE UTILISED FOR PROTECTED LOBBY AND ESCAPE CORRIDORS.
- SELECTION AND SPECIFICATION OF ATTENUATORS TO MEET NOISE CRITERIA ARE TO BE SIZED AND CONFIRMED BY ACOUSTIC CONSULTANT.
- THIS DRAWING HAS BEEN PRODUCED FROM INCOMPLETE RECORD INFORMATION OBTAINED. IT IS THE CONTRACTORS RESPONSIBILITY TO SURVEY AND VERIFY SITE MEASUREMENTS AND ADVISE OF ANY DISCREPANCIES ON THE DRAWINGS AND ASSOCIATED SPECIFICATION TO THE M&E SERVICES CONSULTANT.
- THE CONTRACTORS SHALL PERFORM VALIDATION OF EXISTING SERVICES PRIOR TO COMMENCEMENT OF THE INSTALLATION. THE CONTRACTOR SHALL BE RESPONSIBLE TO VERIFY ALL ASPECTS OF THE DESIGN DURING THIS DESIGN PHASE.



Rev	Date	Description	Drawn
5	25.05.18	STAGE 4 UPDATE	CAD
4	25.05.18	STAGE 4 ISSUE	CAD
3	11.05.18	STAGE 3 UPDATE	CAD
2	04.04.18	STAGE 3 ISSUE	CAD
1	14.04.18	STAGE 3 ISSUE	CAD
0	23.03.18	STAGE 3 DRAFT ISSUE	CAD
			Drawn

Based on architects drawing
 IOE-HEA-WA-05-DR-A-20-0105

STAGE 4

Project: UCL PHASE 1B

Title: LEVEL 5 (WING) MECHANICAL SERVICES VENTILATION LAYOUT

Scale: 1:500 A0

Designed By: MM
 Checked by: AJ
 Date: APR 18

building services consultants
 100 Brook Street, London, W1B 3LY
 T: +44 (0)20 7625 4000
 F: +44 (0)20 7625 4001
 www.bscgroup.co.uk

long-partners

6482 M 1001 5