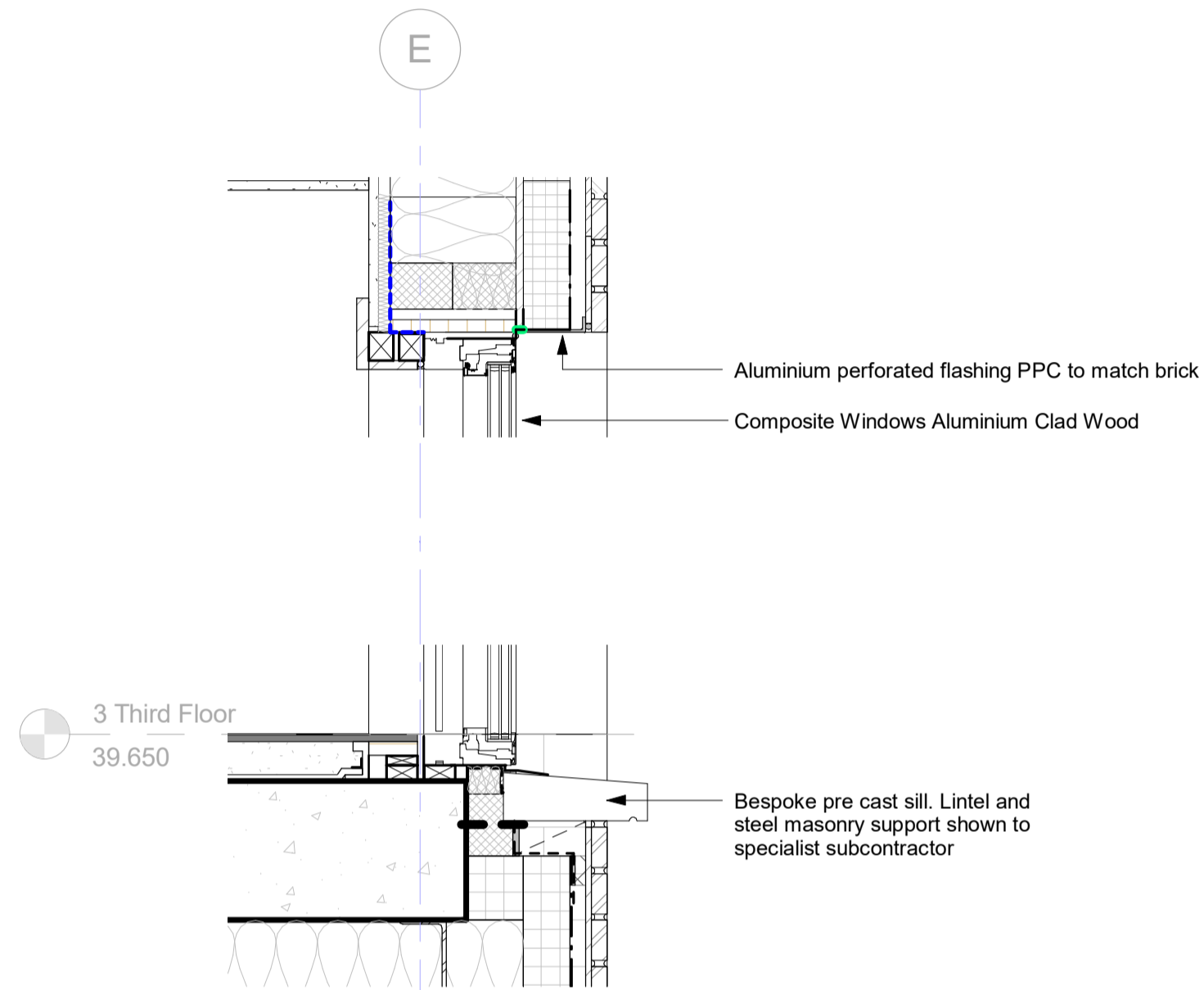
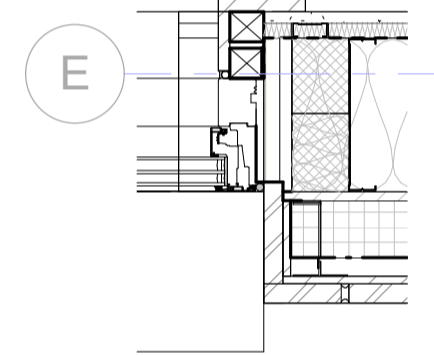


Notes

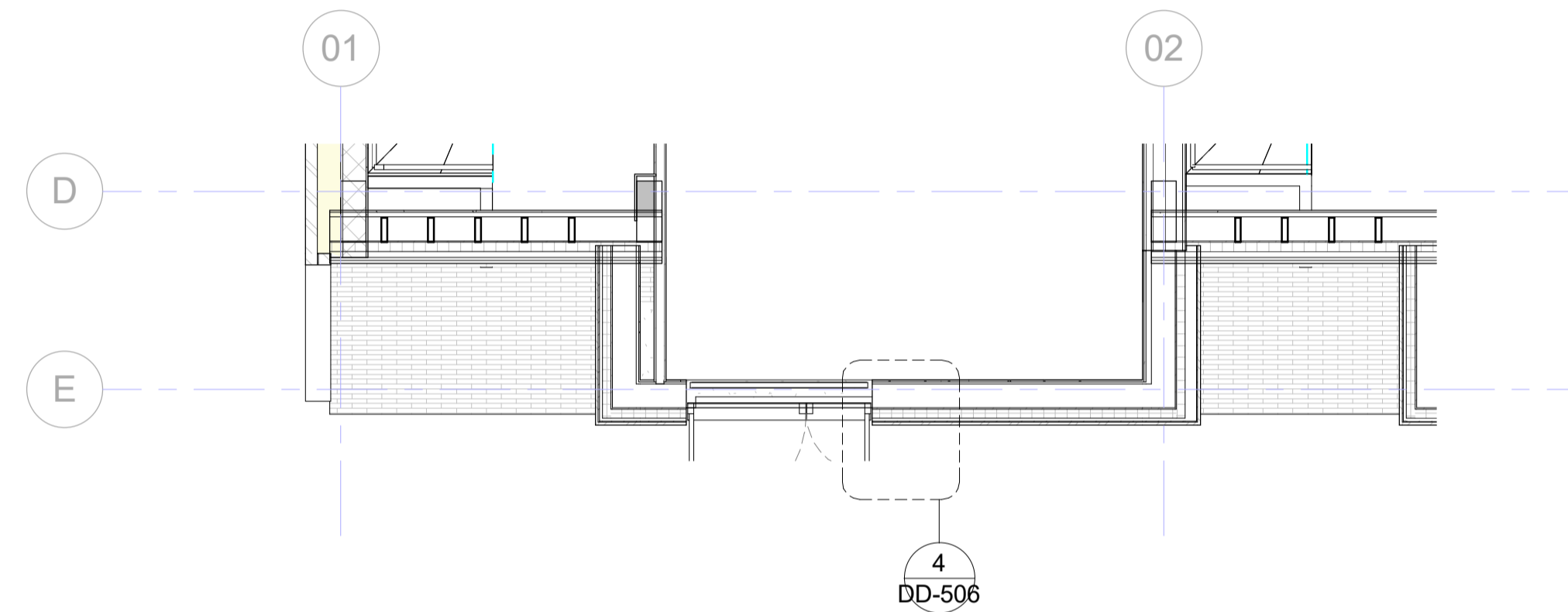
This drawing is © Archtype Ltd.
 Check this drawing is the latest revision.
 Do not scale from this drawing.
 Do not use the information on this drawing without checking all dimensions on site.
 Do not use any areas indicated for either valuation, purchase, sale or any other form of legally binding contract.
 Do not reproduce any part of this drawing without prior written consent.
 Report any discrepancies on this document to Archtype.
 Read this drawing in conjunction with the associated models, specifications and related consultant's documents.
 Equivalent products / materials may be Approved where the Employer's Requirements, Thermal Performance, Airtightness and any other specified performance requirements are met. Subject to Archtype "Acceptance".
 All materials to be certified to comply with BS 14001 or BES6001 or be able to provide a Chain of Custody certificate in order to comply Code for Sustainable Homes. All timber species and sources used in this development are not to be listed on the CITES appendices for endangered or threatened species (appendix I, II or III).



① DD-506 Window Head and Sill Detail to SFS
 1:10



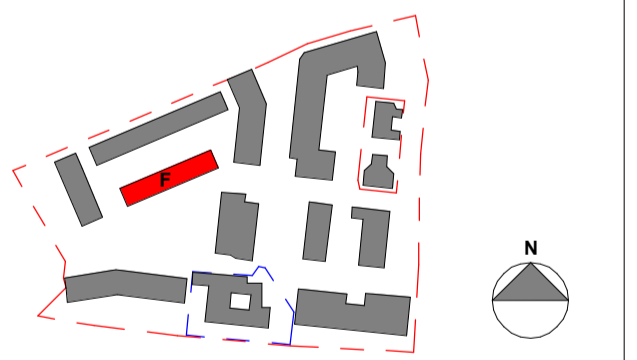
② DD-506 Window Jamb Detail to SFS
 1:10



③ Window Details Reference
 1:50

Rev	Date	Description	SG	AMF
1	30.05.18	Condition Submission For Planning		

Revision Schedule



LONDON: 020 7403 2889 WWW.ARCHTYPE.CO.UK HEREFORD: 01981 542 111

Client: Hill Partnership Ltd for Camden Council

Project: Agar Grove Block F

Drawing Title: Planning details for windows/doors

Project Originator Type Role Phase Block Unit Unique ID
 T14011 - ART - DR - A - 1b F 00 - PL-402

Status: Code Suitability Description

Issued For Information

Revision: Code Revision Description

PL 1 Issued For Planning

Scale: As indicated @ A1 Date: 05/01/18

Drawn by: SG Checked by: AMF

Internal Project Ref: 8575 Model Ref: AG-BlockF-RAC2015