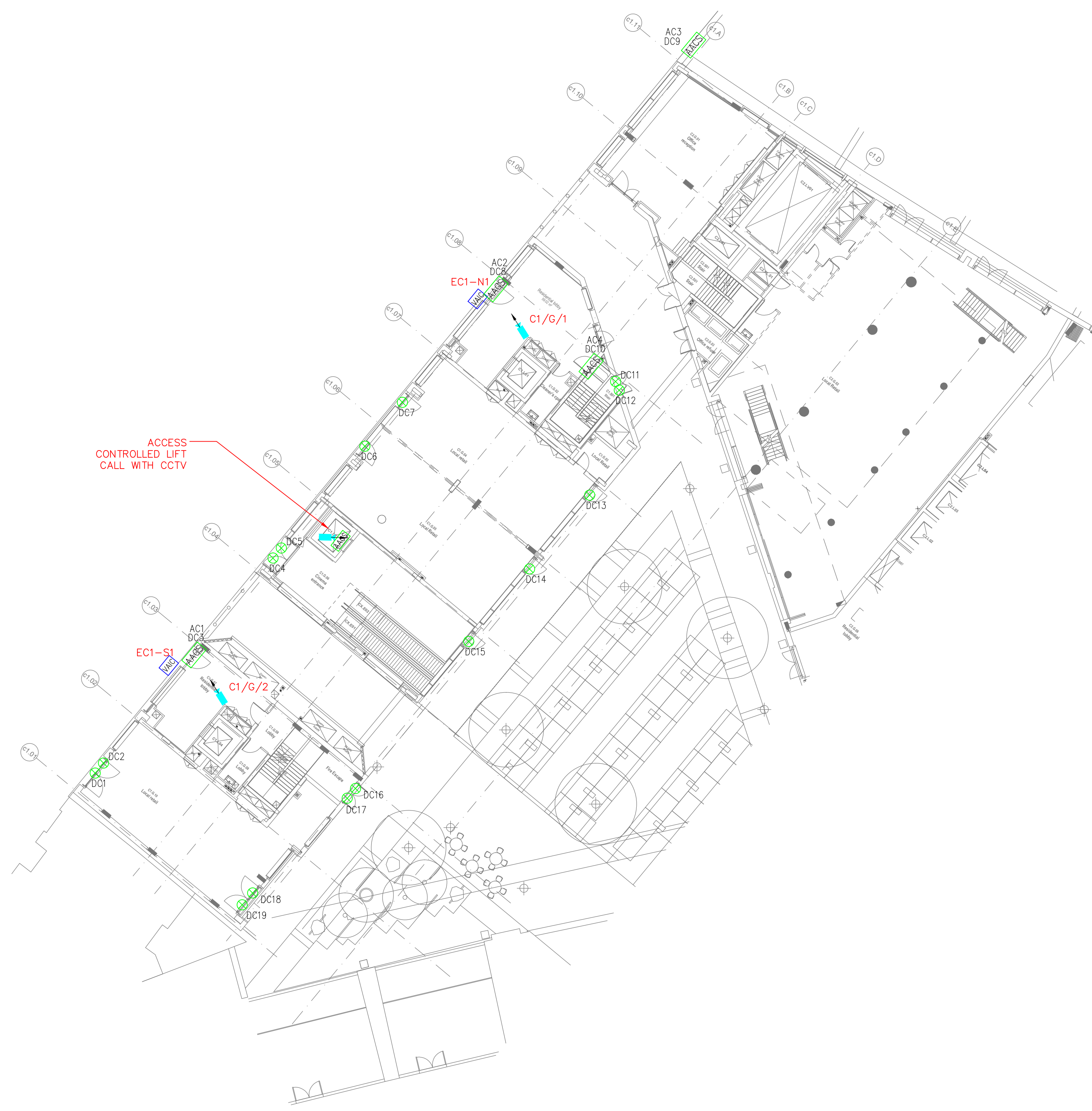


CAD REF: J:\MAIN CONTRACTS\3M3374 CAMDEN LOCK VILLAGE\19 Design & DRAWINGS\Drawings\GSM Security Layouts\CLV-6000-SC-C1-GF-DR-9000_Rev00.dwg MBAKER



Notes

Legend

- INTERNAL PTZ CAMERA WITH HOME POSITION INDICATED
- FIXED VIEW CCTV CAMERA
- 360° PANORAMIC CAMERA
- ACCESS CONTROLLED DOOR
- IDS DOOR CONTACT
- ACCESS INTERCOM
- SECURITY NODE
- VISITOR ACCESS INTERCOM

REFERENCE DOCUMENTS USED TO PRODUCE THIS DRAWING

REF: 4363/P1/C1/420 REV C

00 FOR APPROVAL				S/JG	ARD	07.12.16
REV	INITIAL ISSUE	DESCRIPTION	CHECKED	DRAWN	DATE	

This document is based on an original copyright work created by a company in the Gratte group of companies (Gratte) or a third party (Others) showing the layout of the relevant part of the building and/or the schematics of the fixtures and/or fittings in the relevant part of the building or to be affixed and/or fitted to that part. All property rights including copyright in a drawing created by Gratte or technical additions to that drawing made by Gratte are owned by Gratte. The contents of this document may not be reproduced, copied, stored in any retrieval system in any form or passed to any third party without the express written consent of both Gratte and the relevant Others. Gratte does not accept any responsibility or liability for any errors in the dimensions or scale shown in the drawing.

Client



Job

CAMDEN LOCK VILLAGE

Description

BUILDING C1 - GROUND FLOOR
SECURITY LAYOUT

Drg. No.	Rev	Scale
CLV-6000-SC-C1-GF-DR-9000	00	1:200 @ A1
Date	Drawn	Checked
DECEMBER 16	ARD	S/JG

GRATTE BROTHERS
SECURITY MANAGEMENT LIMITED

2 Regents Wharf
All Saints Street
London N1 9RL

Tel: 020 7837 6433
Fax: 020 7520 8100
email: cod@gratte.com

Security systems engineers