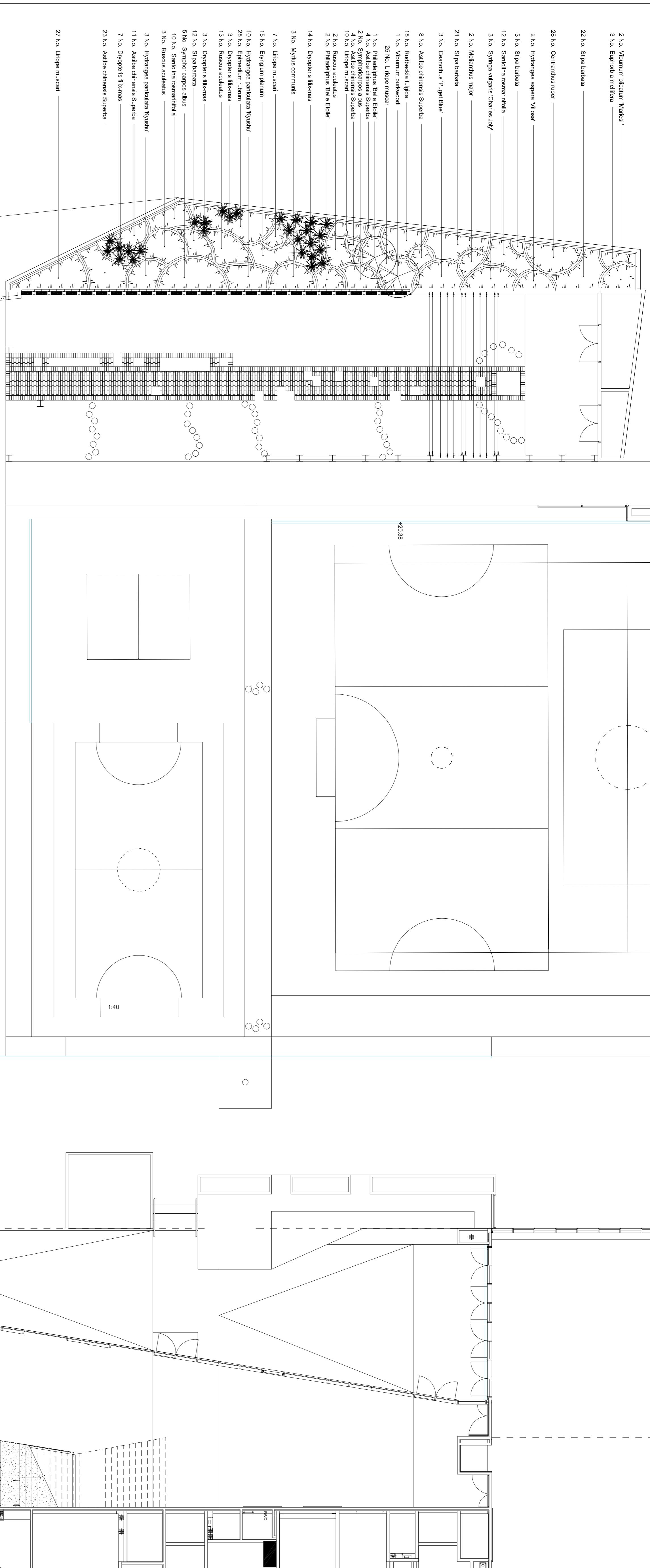


amendments



- 2 No. Viburnum plicatum 'Mariesii'
- 3 No. Euphorbia meliata
- 22 No. Sipa barbata
- 28 No. Centaurea idaei
- 2 No. Hydrangea aspera 'Villosa'
- 3 No. Sipa barbata
- 12 No. Sambolira rosarinifolia
- 3 No. Syringa vulgaris 'Charles-Joly'
- 2 No. Mahonia majur
- 21 No. Sipa barbata
- 3 No. Cornus 'Pugot Blue'
- 8 No. Aulica chinensis 'Superta'
- 18 No. Rubusida fulgida
- 1 No. Viburnum burkwoodii
- 25 No. Linoge musaei
- 1 No. Philadelphus 'Belle Etoile'
- 4 No. Aulica chinensis 'Superta'
- 2 No. Symphoricarpos albus
- 10 No. Linoge musaei
- 2 No. Ruscus scutellus
- 2 No. Philadelphus 'Belle Etoile'
- 14 No. Dryopteris filix-mas
- 3 No. Myrtus communis
- 7 No. Linoge musaei
- 15 No. Eryngium planum
- 10 No. Hydrangea paniculata 'Kyushu'
- 28 No. Eriodictyon nutrum
- 3 No. Dryopteris filix-mas
- 13 No. Ruscus scutellus
- 3 No. Dryopteris filix-mas
- 12 No. Sipa barbata
- 5 No. Symphoricarpos albus
- 10 No. Sambolira rosarinifolia
- 3 No. Ruscus scutellus
- 3 No. Hydrangea paniculata 'Kyushu'
- 11 No. Aulica chinensis 'Superta'
- 7 No. Dryopteris filix-mas
- 23 No. Aulica chinensis 'Superta'
- 27 No. Linoge musaei
- 2 No. Hydrangea aspera 'Villosa'
- 2 No. Viburnum burkwoodii
- 1 No. Mahonia
- 3 No. Philadelphus 'Belle Etoile'
- 3 No. Libertia grandiflora 'Lanceolata'
- 1 No. 4 No. Eriodictyon nutrum
- 7 No. Hydrangea aspera 'Villosa'
- 7 No. Hosteria speciosa
- 1 No. Arctostaphylos uva-ursi
- 4 No. Philadelphus 'Belle Etoile'
- 1 No. 2 No. Ruscus scutellus
- 10 No. Myrtus communis
- 2 No. Carex siliquastrum
- 1 No. Aulica chinensis 'Superta'
- 5 No. Rosmarinus officinalis
- 10 No. Pliconias sessilifera
- 2 No. Rosmarinus officinalis
- 14 No. Centaurea idaei
- 7 No. Libertia grandiflora
- 5 No. Rosmarinus officinalis
- 3 No. Mahonia 'Transparent'
- 10 No. Pliconias sessilifera
- 2 No. Rosmarinus officinalis
- 14 No. Centaurea idaei
- 1 No. Hamamelis intermedia 'Diane'
- 1 No. Eriodictyon nutrum 'Tallolli'
- 2 No. Hamamelis intermedia 'Diane'
- 1 No. Corylus colurna 'Grand'
- 11 No. Eriodictyon nutrum 'Villosa'
- 2 No. Hosteria speciosa
- 11 No. Veronica bonariensis
- 5 No. Cornus 'Pugot Blue'
- 23 No. Cornopeltis danden. 'Heavyweight'
- 4 No. Cornus 'Pugot Blue'
- 3 No. Mahonia 'Transparent'
- 1 No. Viburnum plicatum 'Mariesii'
- 13 No. Euphorbia meliata
- 2 No. Euphorbia meliata
- 13 No. Euphorbia meliata
- 2 No. Hosteria speciosa
- 1 No. Viburnum plicatum 'Mariesii'
- 11 No. Veronica bonariensis
- 11 No. Cornus kousa 'Milk Way'
- 4 No. Philadelphus 'Belle Etoile'
- 1 No. Hamamelis intermedia 'Diane'
- 7 No. Pliconias sessilifera
- 13 No. Rubusida fulgida
- 13 No. Pliconias sessilifera
- 13 No. Pliconias sessilifera
- 4 No. Cornus 'Pugot Blue'
- 16 No. Pliconias sessilifera
- 1 No. Carex siliquastrum
- 25 No. Sipa barbata
- 22 No. Libertia grandiflora
- 7 No. Rosmarinus officinalis
- 11 No. Rubusida fulgida

drawing status: Information
project: Plot 4 Edlin Neville Primary School
job number: LP2119
drawing title: Public Realm Planting
drawing number: 5689-LP2119-FIR-PT4-P-5000

revision	scale	drawn	date
-	1:100 @ A1	BK	13/04/18

for information
for construction

fira
The Jewellery Business Centre
88-90/90A/91
Folkestone
Folkestone, Kent, CT20 1JQ
Tel: 01524 523 1053
Fax: 01524 523 1054

TIRA LANDSCAPE ARCHITECTS AND URBAN DESIGN