

RAL 9005
Paint - Jet Black

RAL 1036
Paint - Pearl Gold

SIGNAGE SCHEDULE - "S"				
DESIGN ID	COUNT	DESCRIPTION	RESP.	COMMENTS
BUILDING SIGNAGE				
13159	1	SIGN - DISK DF ILLUMINATED WITH BRACKET WALL MOUNTED EVOLVED - 24IN 610MM	SIGNAGE SUPP	
XS001	1	SIGN - WORDMARK - WHITE POWDER COATED ILLUMINATED WITH REFLECTIVE FRONT FACE COATING - SIZE: 1550MM X X170MM HEIGHT	SIGNAGE SUPP	MOUNTED SECURELY VIA FIXING PLATE TO STOREFRONT FRAMEWORK

SHEET NOTES

- WORDMARK TO BE CENTRED OVER DOORWAY. WORDMARK WHITE POWDERCOATED METAL WITH A REFLECTIVE FRONT FACE COATING. WORDMARK TO BE SECURELY MOUNTED TO BLACK METAL BAR. BAR TO UPLIGHT AND DOWNLIGHT MESH FASCIA PANEL (SEE DETAIL LEFT).
- FASCIA PANEL BEHIND WORDMARK TO BE MESH WITH SOLID BACKING.

MESH SPEC: SOHO XL: RAL 1036
MESH SUPPLIER: LOCKER GROUP
TEL: 01925 406618
www.architecturalwiremesh.com

MESH TO BE INCORPORATED INTO FACADE FRAMES PRIOR TO ARRIVAL ON SITE BY SHOPFRONT SUPPLIER. MESH TO BE OPEN TO ALLOW FOR VENTILATION IN BOTTOM ROW. MESH TO HAVE BLACK METAL BACKING ON THE HIGHER 2 ROWS TO BECOME A SOLID FASCIA PANEL.
- FASCIA PANEL BELOW WORDMARK TO BE MESH WITH OPEN BACK TO ALLOW FOR VENTILATION INTO THE STORE. MESH TBC AT CHECK SET.
- STOREFRONT TO BE CONSTRUCTED OF BLACK METAL WITH GLASS, MESH, SOLID METAL INFILLS
- WINDOWS TO LEFT HAND SIDE OF DOOR TO BI-FOLD BACK TO LEFT HAND SIDE WALL INTERNALLY.
- BLADE SIGN TO BE INTERNALLY ILLUMINATED
- CURRENT FACADE BOXING OUT (YELLOW IN PHOTO LEFT) TO BE CLAD IN SAME BLACK METAL IN RAL 9005 JET BLACK AND TO BE MADE FLUSH WITH FASCIA PANEL ABOVE.
- DOOR TO BE SAME STYLE AND PROPORTIONS AS REST OF STOREFRONT AND OPEN INWARDS ONTO ENTRANCE MATTING.

EXTERIOR ELEVATION NOTES

- GENERAL CONTRACTOR TO COORDINATE AND SCHEDULE SIGNAGE INSTALLATION WITH THE SIGNAGE CONTRACTOR.
 - GENERAL CONTRACTOR SHALL COORDINATE WITH ELECTRICAL CONTRACTOR TO FURNISH AND INSTALL ELECTRICAL CIRCUITS INCLUDING ALL CONDUIT, CABLING, CONNECTIONS, AND BREAKER AT PANEL BOARD NECESSARY TO SERVE SIGNAGE.
 - UNLESS OTHERWISE STATED, GENERAL CONTRACTOR WILL SUPPLY AND INSTALL ALL SIGNAGE SUPPORT FRAMES, BACKING PANELS, STUDWORK, ETC. IN LINE WITH SIGNAGE CONTRACTOR'S DRAWINGS.
 - ON REQUEST, SIGNAGE CONTRACTOR WILL SUPPLY SHOP DRAWINGS PRIOR TO FABRICATION TO STARBUCKS CONSTRUCTION MANAGER/PROJECT MANAGER.
 - SIGNAGE CONTRACTOR TO INSTALL SIGNAGE IN COMPLIANCE WITH APPROVED PROJECT DRAWINGS AND/OR LOCAL APPLICABLE REGULATIONS.
 - GENERAL CONTRACTOR TO NOTIFY STARBUCKS CONSTRUCTION MANAGER IMMEDIATELY IF SHOP DRAWINGS OR INSTALLATION IS IN DISCREPANCY WITH STARBUCKS ARCHITECTURAL DRAWINGS.
 - GENERAL CONTRACTOR TO CLEAN, PATCH AND REPAIR EXISTING EXTERIOR AS REQUIRED.
- GC TO CONFIRM ALL DIMENSIONS ON SITE AND ADVISE STARBUCKS OF ANY CHANGES.**
- SHOPFRONT CONTRACTOR TO ACCURATELY MEASURE ON SITE PRIOR TO MANUFACTURE**



© 2015 STARBUCKS COFFEE COMPANY

STARBUCKS COFFEE COMPANY

BUILDING 4, CHISWICK PARK
566 CHISWICK HIGH ROAD
LONDON, W4 5YE

THESE DRAWINGS AND SPECIFICATIONS ARE CONFIDENTIAL AND SHALL REMAIN THE SOLE PROPERTY OF STARBUCKS CORPORATION, WHICH IS THE OWNER OF THE COPYRIGHT IN THIS WORK. THEY SHALL NOT BE REPRODUCED (IN WHOLE OR IN PART), SHARED WITH THIRD PARTIES OR USED IN ANY MANNER ON OTHER PROJECTS OR EXTENSIONS TO THIS PROJECT WITHOUT THE PRIOR WRITTEN CONSENT OF STARBUCKS CORPORATION. THESE DRAWINGS AND SPECIFICATIONS ARE INTENDED TO EXPRESS DESIGN INTENT FOR A PROTOTYPICAL STARBUCKS STORE (WHICH IS SUBJECT TO CHANGE AT ANYTIME) AND DO NOT REFLECT ACTUAL SITE CONDITIONS. NEITHER PARTY SHALL HAVE ANY OBLIGATION NOR LIABILITY TO THE OTHER (EXCEPT STATED ABOVE) UNTIL A WRITTEN AGREEMENT IS FULLY EXECUTED BY BOTH PARTIES.

STARBUCKS TEMPLATE VERSION EMEA 2017_01

ARCHITECT OF RECORD

THIS DRAWING IS A DESIGN DEVELOPMENT DOCUMENT. SITE SPECIFIC MODIFICATIONS MADE UNDER THE RESPONSIBLE CHARGE OF THE ARCHITECT AND/OR ENGINEER-OF-RECORD WILL BE REQUIRED PRIOR TO USING THIS DOCUMENT FOR BIDDING, PERMITTING, OR CONSTRUCTION.

DESIGN DEVELOPMENT ONLY - NOT INTENDED FOR CONSTRUCTION

PROJECT NAME:
Kentish Town

PROJECT ADDRESS:
**325 Kentish Town Road,
Kentish Town London
NW5 2TJ**

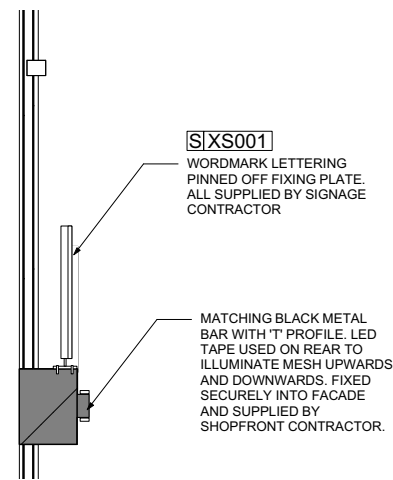
STORE #: 55927
PROJECT #: 81634-001
CASEWORK CONCEPT:
ISSUE DATE: 08/06/2018
DESIGN MANAGER: Adrienne Cooper
PROJECT DESIGNER: Phil Parkin
PRODUCTION DESIGNER:
CHECKED BY: Checked By

Revision Schedule			
Rev	Date	By	Description

SHEET TITLE:
Exterior Elevations

SCALE: AS SHOWN

SHEET NUMBER:
A-2001

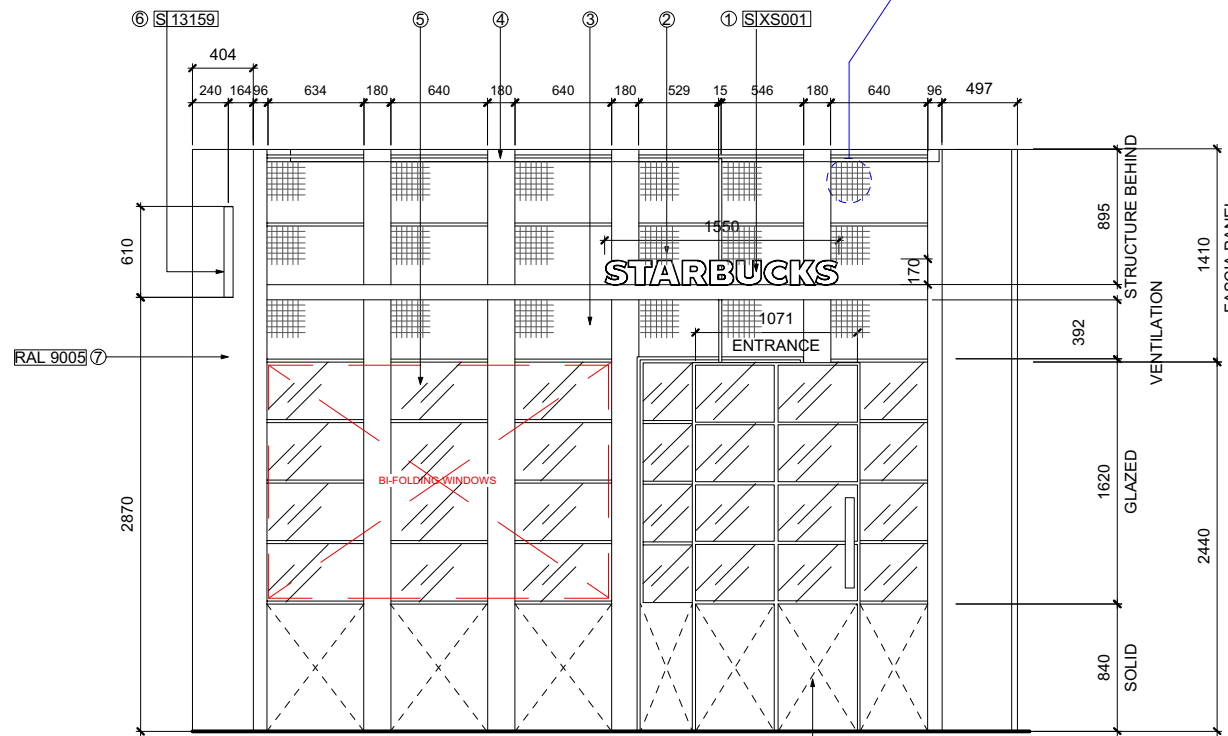
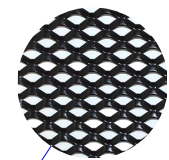


1 SECTION - DETAIL 1
Scale: 1:10

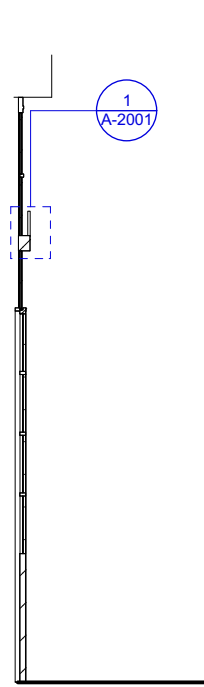


EXISTING SHOPFRONT

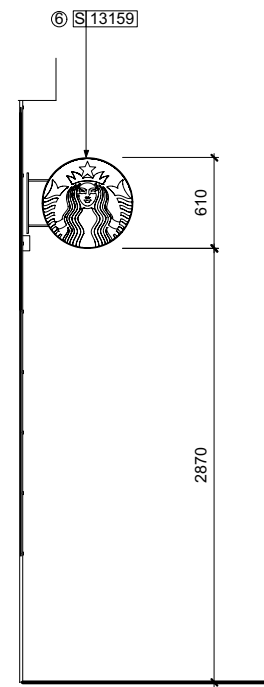
MESH: SOHO XL ARCHITECTURAL EXPANDED METAL IN RAL 1036 PEARL GOLD



2 EXTERNAL ELEVATION
Scale: 1:50



3 SECTION
Scale: 1:50



4 SIDE ELEVATION
Scale: 1:50



Scale: 1:50