

**CLIENT :**  
**TESCO EXPRESS**

**PROJECT :**  
**EXTERNAL SIGNAGE**

**SITE REFERENCE :**  
**GENERIC DRAWINGS**

**PRODUCT TYPE/DOCUMENT TITLE :**  
**500 PROJECTING SIGN FASCIA MOUNTED-INT LIT**

A Merson Group Business

**MERSON-ASG**  
SIGNAGE & BRANDING

**DRAWING / DOCUMENT No :**  
CD-TEX-EX-PR12

**FILE PATH:**  
I:\Design Black Seal\Tesco  
Express\EXTERNAL\PROJECTING\TEX-EX-PR12 500 PROJECTING  
SIGN-INTERNALLY LIT\3.CONSTRUCTION DRAWINGS\2.AUTOCAD

**ISSUE :** **1**    **DATE :** **25.01.18**

**DESIGN STATUS :**  
**FOR CONSTRUCTION**

## DESIGN REGISTER

Our design information is issued as a multi-page document. Each document has a unique number and each drawing or page a sequential number of that. Individual drawings/pages within a document have a revision status marked by a letter and a red 'rev' cloud on the drawing. Each document issue is marked by a number, the table below provides a history of this document.

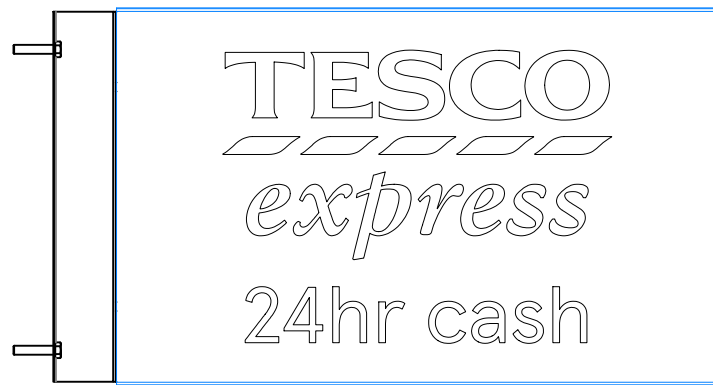
ISSUE:	DATE:	DESIGNER:	CHECKED:	APPROVED:	DESIGN STATUS:	SUMMARY OF ISSUE:
1	25.01.18	MF	TD	SW	FOR CONSTRUCTION	DRAWING FIRST ISSUED

## RISK ELEMENTS

During design development risks are identified on drawings/pages using a bold red dashed box. This could be information or detail yet to be confirmed leading to risk in proceeding or ones that remain in the design but highlighted to reduce risk to construction, safety, health or the environment. The table below shows numbered risks and how these have been managed.

RISK No:	DESCRIPTION OF RISK:	RESOLUTION AGREED:
R1	PROJECTING SIGN ARTWORK TO BE ADDED	ARTWORK SUPPLIED BY CLIENT

INDICATED BY: -----



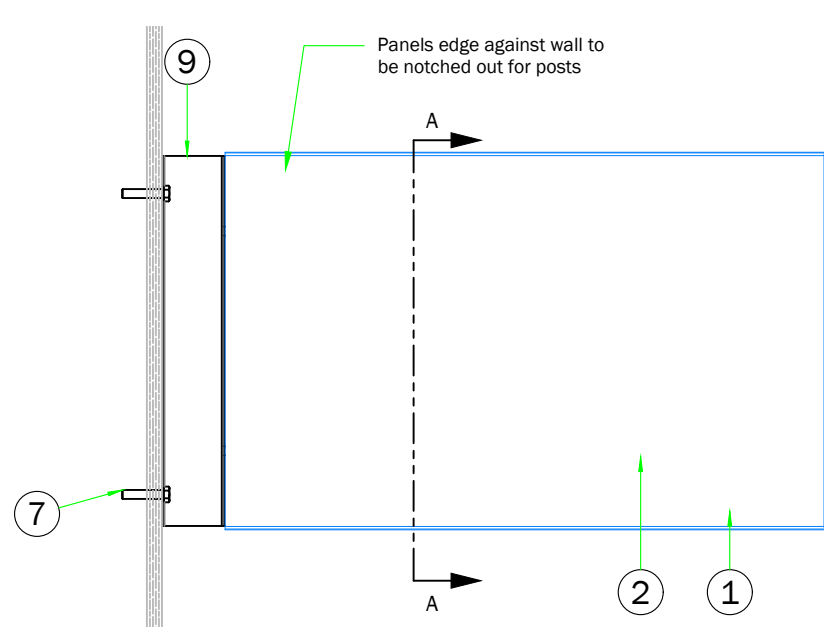
○ **PR12-1 Tesco Express + 24HR CASH**  
scale 1:10



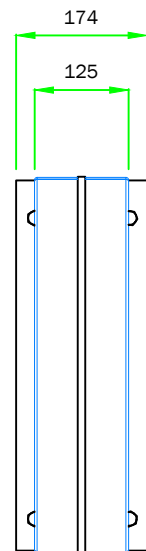
○ **PR12-2 Tesco Express + CASH**  
scale 1:10



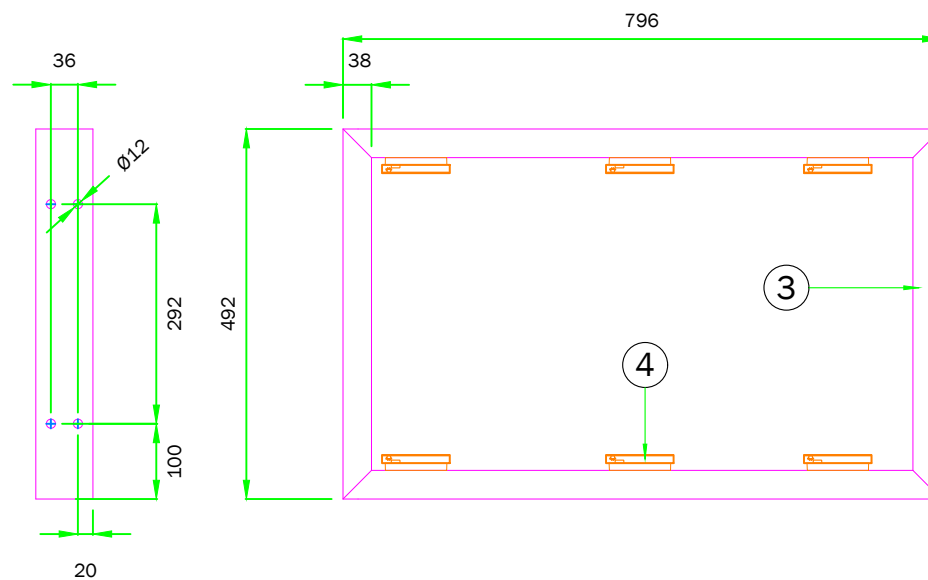
○ **PR12-3 Tesco Express Only**  
scale 1:10



○ **Front Elevation - Remote Version**  
scale 1:10

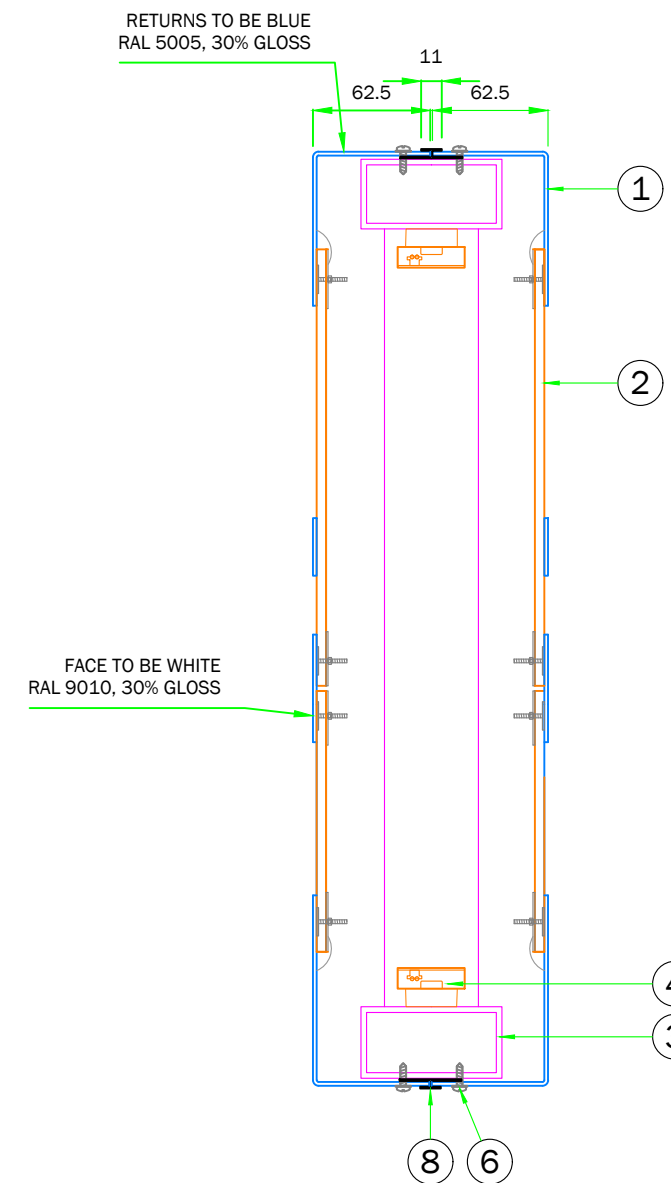


○ **End Elevation**  
scale 1:10

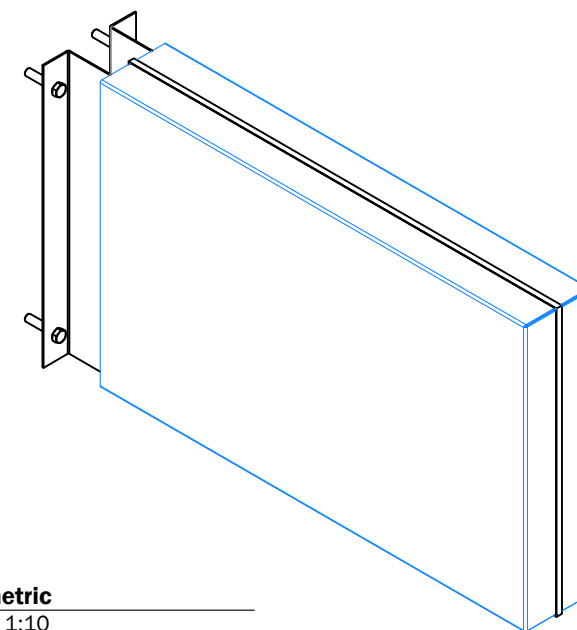


○ **Framework: Front Elevation**  
scale 1:10

○ **Framework: Side Elevation**  
scale 1:10

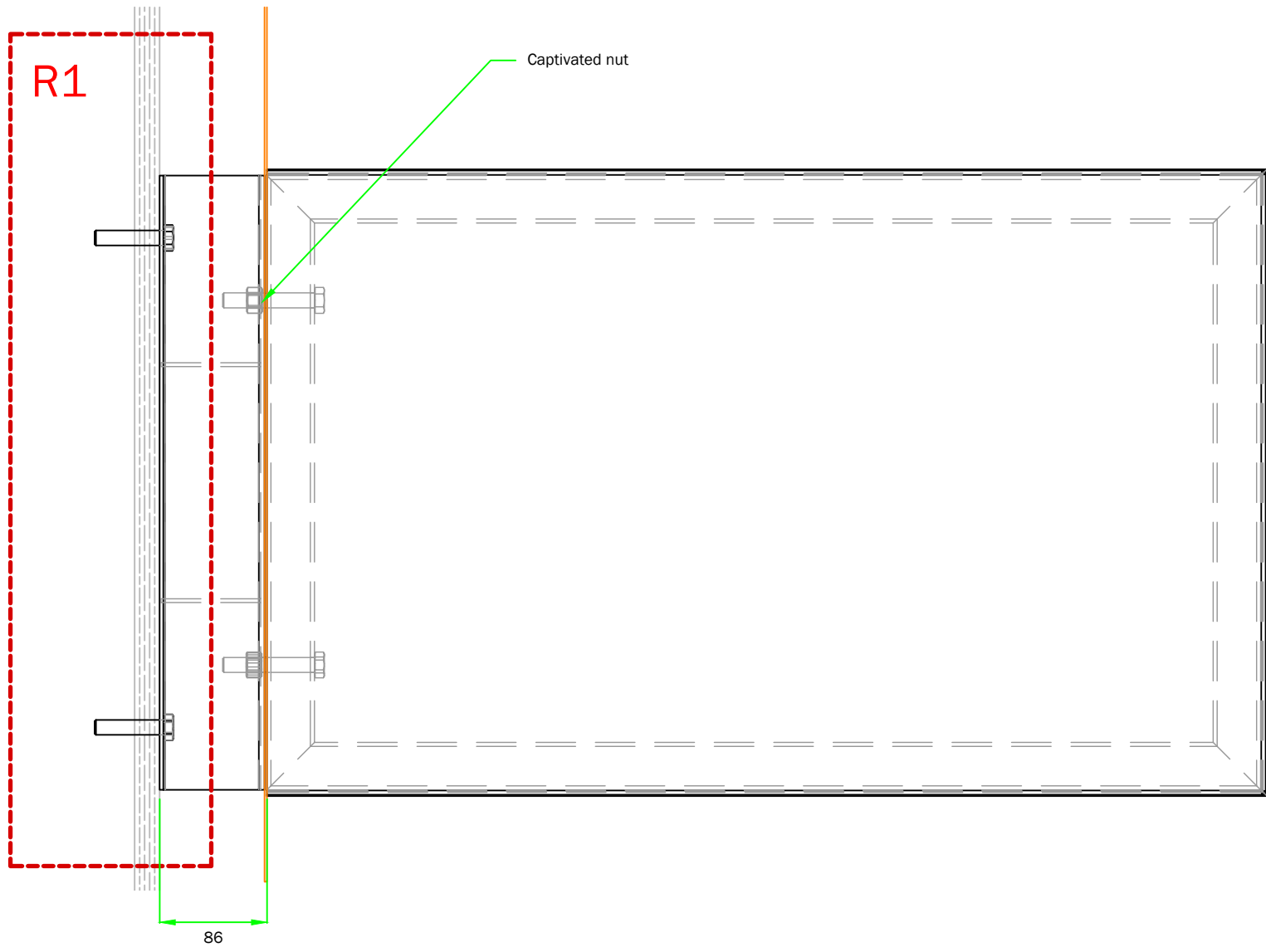


○ **A Section A-A**  
scale 1:4

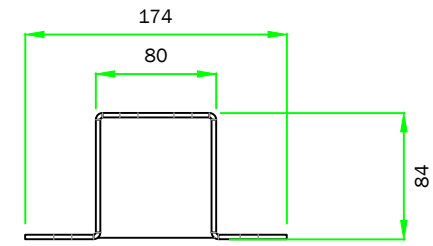


○ **Isometric**  
scale 1:10

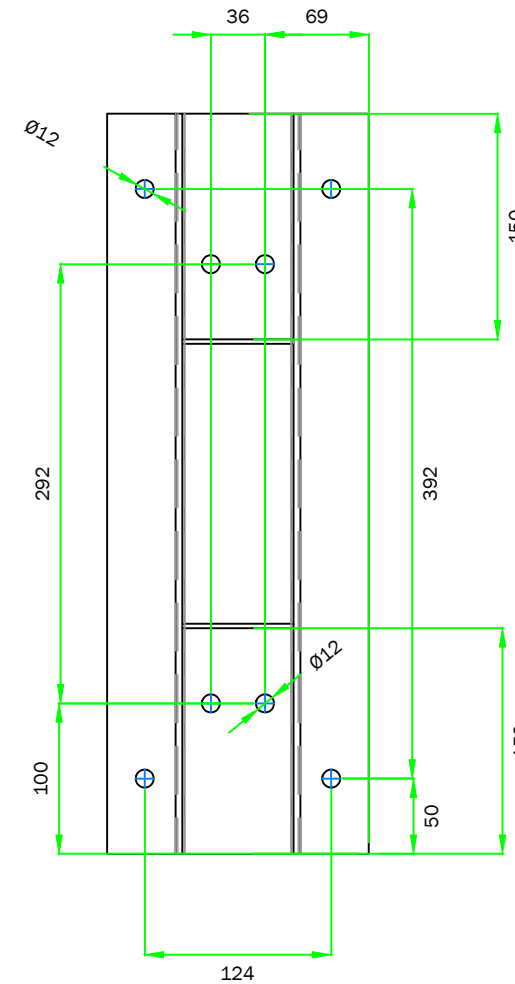
SPECIFICATION				
Item	Description	Qty.	Tick Box	Initials
1	Face panels folded from 2mm aluminium, FACE - to be powdercoated WHITE RAL 9010, 30% gloss RETURNS - to be powdercoated BLUE Ral 5005, 30% gloss.	2		
2	5mm acrylic fixed to rear of panel with big head fixings and Simson ISR 70-03. For 'TESCO' Opal 030 with Avery 4509 translucent vinyl applied to face to be used. For 'blips' under 'TESCO' Opal 030 with Avery 5600 LD-082A translucent vinyl applied to face to be used. For 'EXPRESS' letters and additional 'CASH' text, Opal 030 with Avery 5600 LD-082A translucent vinyl applied to face to be used.	as req		
3	2no. framework legs from 75x38x3mm mitred aluminium box section, with 75x38x3mm vertical at end. To be powdercoated BLUE RAL 5005, 30% gloss	1		
4	Tetra Edge Strip LED Product Code: GEWHBIP2	6		
5	Transformer to suit LEDs.	as req		
6	No.8x13mm flange head self tapping screws for fixing face panels to frame, touched up WHITE RAL 9010, 30% gloss	as req		
7	Suitable fixings for fixing base plate to substrate	8		
8	H-section wallboard extrusion to run perimeter of sign, To be powdercoated BLUE RAL 5005, 30% gloss.	as req		
9	3mm mild steel top hat bracket with 3mm plates welded to inside for strength -to be red oxide coated. M10mm captivated nut fixed to inside of bracket.	1		



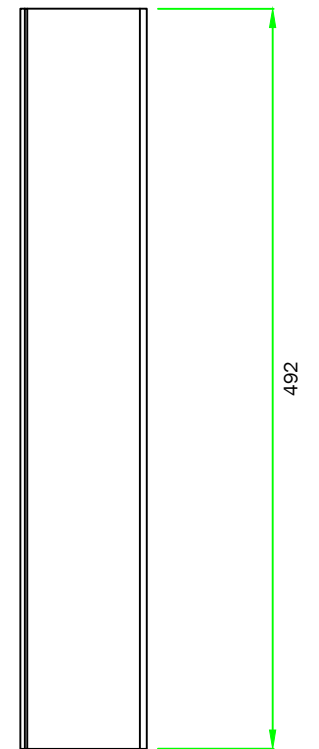
Plan View - PR-12 Fascia Mounted Option  
scale 1:5



Plan View - Top Hat Bracket  
scale 1:5



Front View - Top Hat Bracket  
scale 1:5



Side View - Top Hat Bracket  
scale 1:5