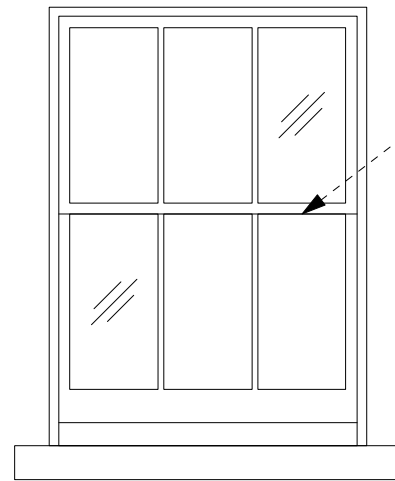
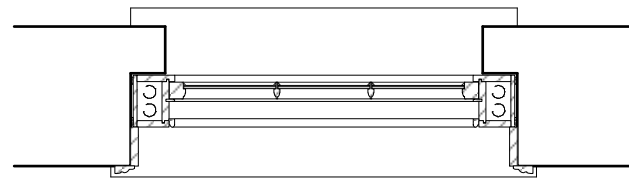


Section 1:20



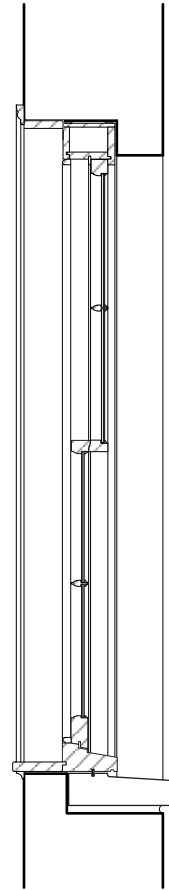
Elevation 1:20

White painted three over three timber sash window. Frame and glazing bar profiles to match existing. Glazing to be Histoglass Mono RT.

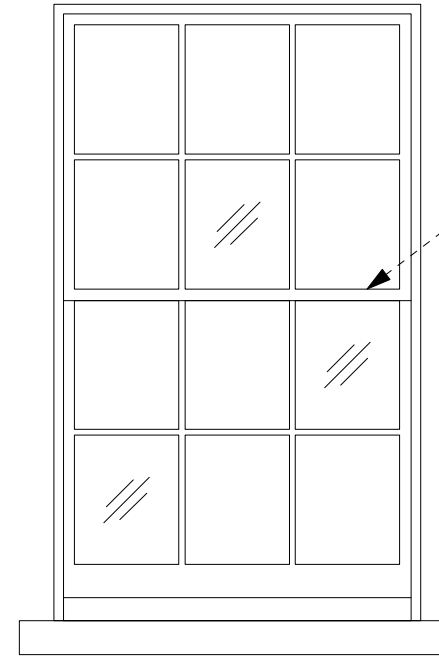


LG-W-02

Plan 1:20

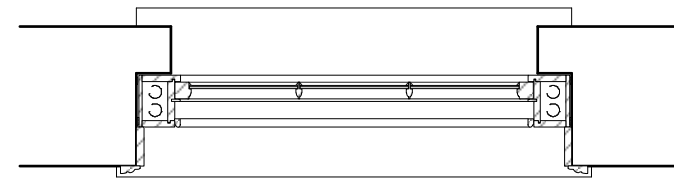


Section 1:20



Elevation 1:20

White painted six over six timber sash window. Frame and glazing bar profiles to match existing. Glazing to be Histoglass Mono RT.



LG-W-03

Plan 1:20

**General Notes**  
Do not scale from this drawing  
All dimensions to be verified on site  
To be read in conjunction with all relevant documents  
In the event of discrepancy notify the Architect immediately  
This document is copyright of Hugh Cullum Architects Ltd

**Issue Status**  
SK Sketch E Existing Condition  
D Design P Permissions  
T Tender C Contract

(\_) : Issued for Planning (12.06.18/TS/HC)  
Revision: Information (date/drawn by/checked by)

0m 0.5m 1m 2m

## Proposed \_ Detailed Arrangement \_ Sash Window Details

**HUGH CULLUM**  
ARCHITECTS LTD  
Bloomsbury Design  
61b Judd Street  
London WC1H 9QT  
t 020 7383 7647  
f 020 7387 7645  
mail@hughcullum.com

**2 Provost Road**

PLANNING\_ Proposal  
Window Details I  
1:20@A3 June 2018

PR002-P330(\_)