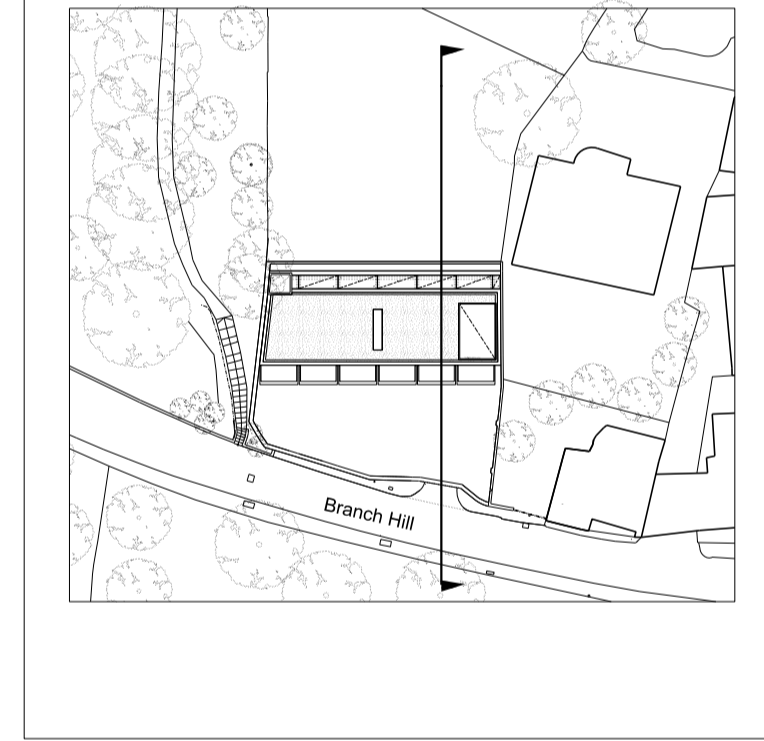
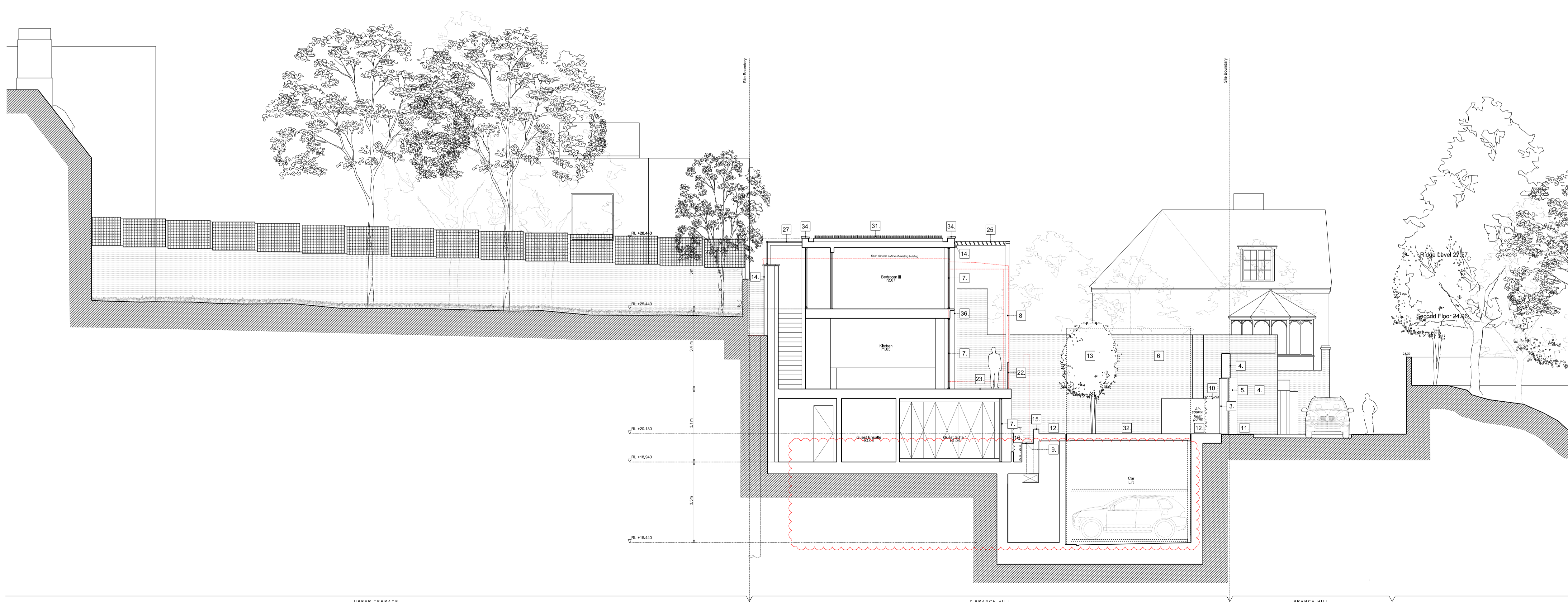


- Legend: Existing Building**
- Existing London Stock brick wall
 - Existing brick paving
 - Existing steel-framed shade structure
 - Existing timber lattice atop London Stock brick garden wall
 - Existing garage door
 - Existing sliding vehicle gate to Branch Hill
 - Existing aluminium-framed glass sliding doors
 - Existing razor wire atop garden wall
 - Existing upstand of aluminium-framed rooflight

- Key:**
- Existing structure / earth
 - New structure
 - Outline of existing house

- Legend: Proposed Building**
- New 'Bronze' (Electroplated Aluminium) front door
 - New 'Bronze' (Electroplated Aluminium) fixed panels
 - New 'Bronze' (Electroplated Aluminium) sliding gate
 - New brickwork retaining wall in stock brickwork re-claimed from demolition
 - 'Bronze' (Electroplated Aluminium) reveals to new opening in garden wall.
 - Existing London stock brickwork wall retained
 - 'Bronze' (Electroplated Aluminium) framed double-glazed sliding door system
 - 'Bronze' (Electroplated Aluminium) frame. Refer drawing P_09
 - Flush, floor-mounted 'Bronze' (Electroplated Aluminium) grilles to ventilate basement environment (below)
 - Air-source heat pump enclosure. Refer to noise specialists documentation
 - New vehicular crossover: Brick paving to match existing
 - New Granite Setts paving to drive
 - Mature specimen Ash in bespoke, raised, cast-stone planter. Refer to P_06
 - 'Linear' brick external wall, stagger bond
 - Raised curb in 'Linear' brickwork
 - Yew hedging. Refer to P_06
 - 'Bronze' (Electroplated Aluminium) double-glazed fixed window system
 - Deep planting zone (designated by green hatch). Refer to P_06
 - Double-glazed glass walkway to ground floor
 - Flush, double-glazed fixed walk-on rooflight
 - Lawn. Refer to P_06
 - 'Bronze' (anodised aluminium) steel-framed, lightweight balustrade
 - Yorkstone paving
 - Yorkstone coping to retaining wall
 - Pre-fabricated 'Bronze' (Electroplated Aluminium) brise soleil
 - Balcony: Yorkstone paved, 'Bronze' (Electroplated Aluminium) fascia
 - 'Bronze' (Electroplated Aluminium) portal frame with flush, fixed, double-glazed, obscured, sand blasted glass mull between frame
 - 'Bronze' (Electroplated Aluminium) chimney flue
 - Lift and counter weight, LRT overrun formed in 'linear' brick, with linear brick lid
 - Fixed, double-glazed flush rooflight with obscured sand blasted glass
 - Secum roof, refer to P_06
 - Car lift
 - Gar-tum-table within basement
 - Polyester powder-coated coping
 - Mature specimen Copper Beech within deep planting zone. Refer to P_06
 - Anodised aluminium feature spandrel panel
 - 'Bronze' (Electroplated Aluminium) framed double-glazed tilt-turn window system
 - Mature specimen Birch, within deep planting zone. Refer to P_06
 - Operable, double-glazed flush rooflight
 - Proposed timber lattice atop London Stock brick garden wall
 - Glazed access hatch
 - Fixed, double-glazed flush rooflight with obscured privacy fins below

UPPER TERRACE 7 BRANCH HILL BRANCH HILL Existing Section CC



- Rev C 02/02/2018 Minor Material Amendment Application Revisions bubbled
- Rev B 17/10/2013 Issued for Planning Revisions bubbled
- Rev A 07/06/2013 Issued for Planning

PLANNING ISSUE

Project No. **12021**

Client **Cheryl Plaza**

Date **June 2013**

Scale **1:50@A00, 1:100@A1**

Project **Judges Lodge, Branch Hill**

Drawing Title: **Existing & Proposed Section CC**

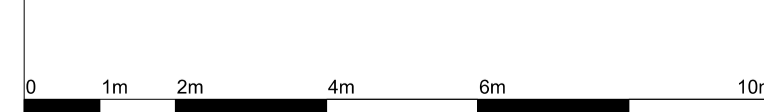
Drawing No. **P_16** Rev. **C**

Drawn **LH** Approved **MW** Signed

Marek Wojciechowski Architects

28 Margaret Street W1W 8RZ T. 020 7580 8336 www.mw-a.co.uk

Copyright Marek Wojciechowski Architects Limited. No implied license exists. This drawing should not be used to calculate areas for the purposes of valuation. All dimensions to be checked on site by the contractor and such dimensions to be their responsibility. Do not scale drawings. All work must comply with relevant British Standards and Building Regulations requirements. Drawing errors and omissions to be reported to the architect.



UPPER TERRACE 7 BRANCH HILL BRANCH HILL Proposed Section CC