

Indicative Site Plan

Receiver points A, B & C as acoustic consultancy report 10858 dates 21st November 2017 by Acoustic Consultancy Partnership Ltd.

**Finish**

- 1) Louvres to be finish painted to a standard RAL colour
- 2) Steel acoustic door to be finish painted to a standard RAL colour
- 3) Attenuators, splitters, plenum plates and closing off angles to be galvanised finish
- 4) Masonry walls and roof finish to be agreed by architect

**Builders Work**

- Existing external wall modified as shown
- External ground dug away to create clear opening for doors

**Mitigation Measures**

- steel weather louvres
- plenums
- attenuator splitters - fixed and removable
- hinged steel weather louvred door - double leaf

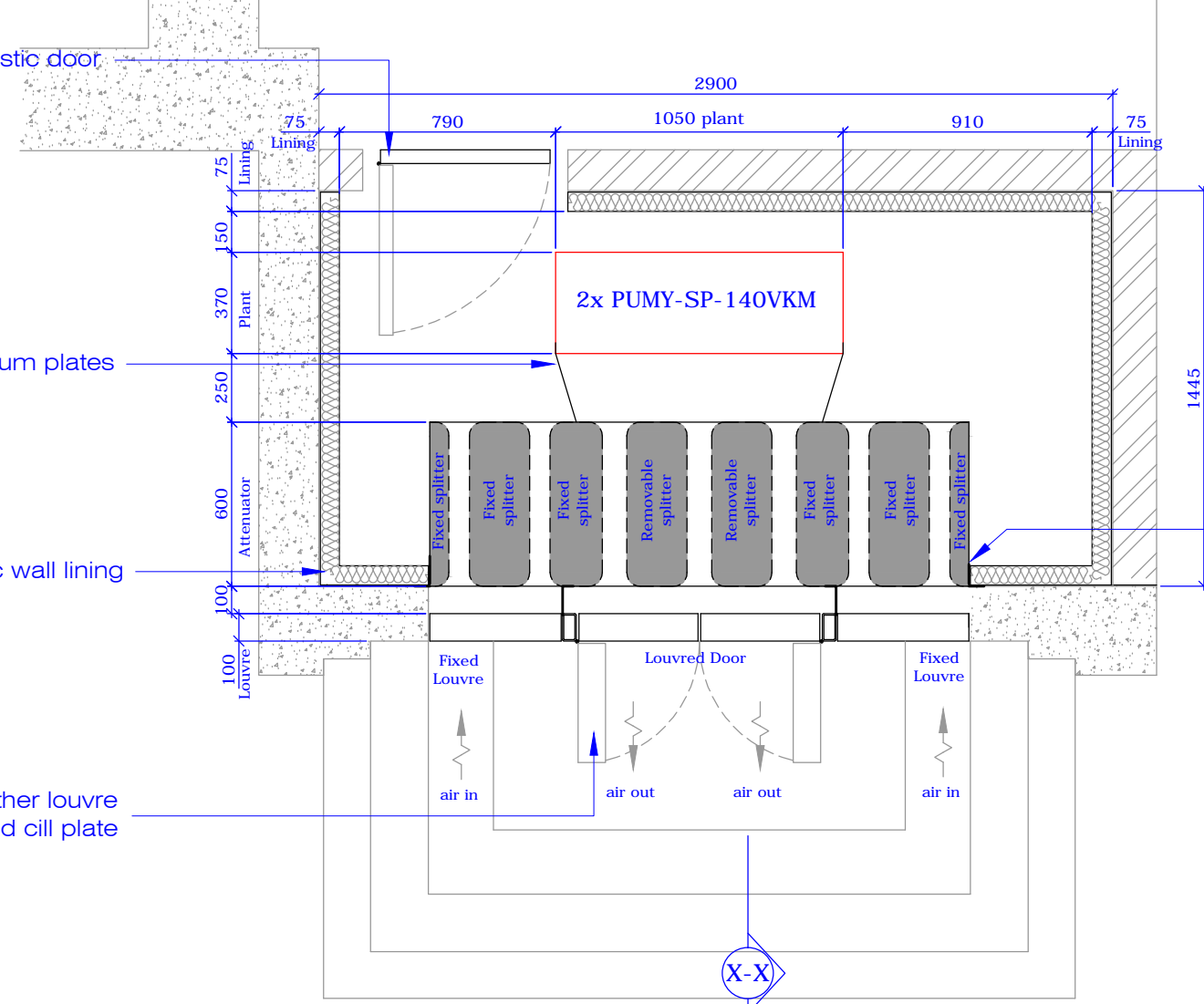
Doors to have a welded box section frame, satin finish pull handles and Eurocylinder deadlock.

Optional steel acoustic door

Plenum plates

Acoustic wall lining

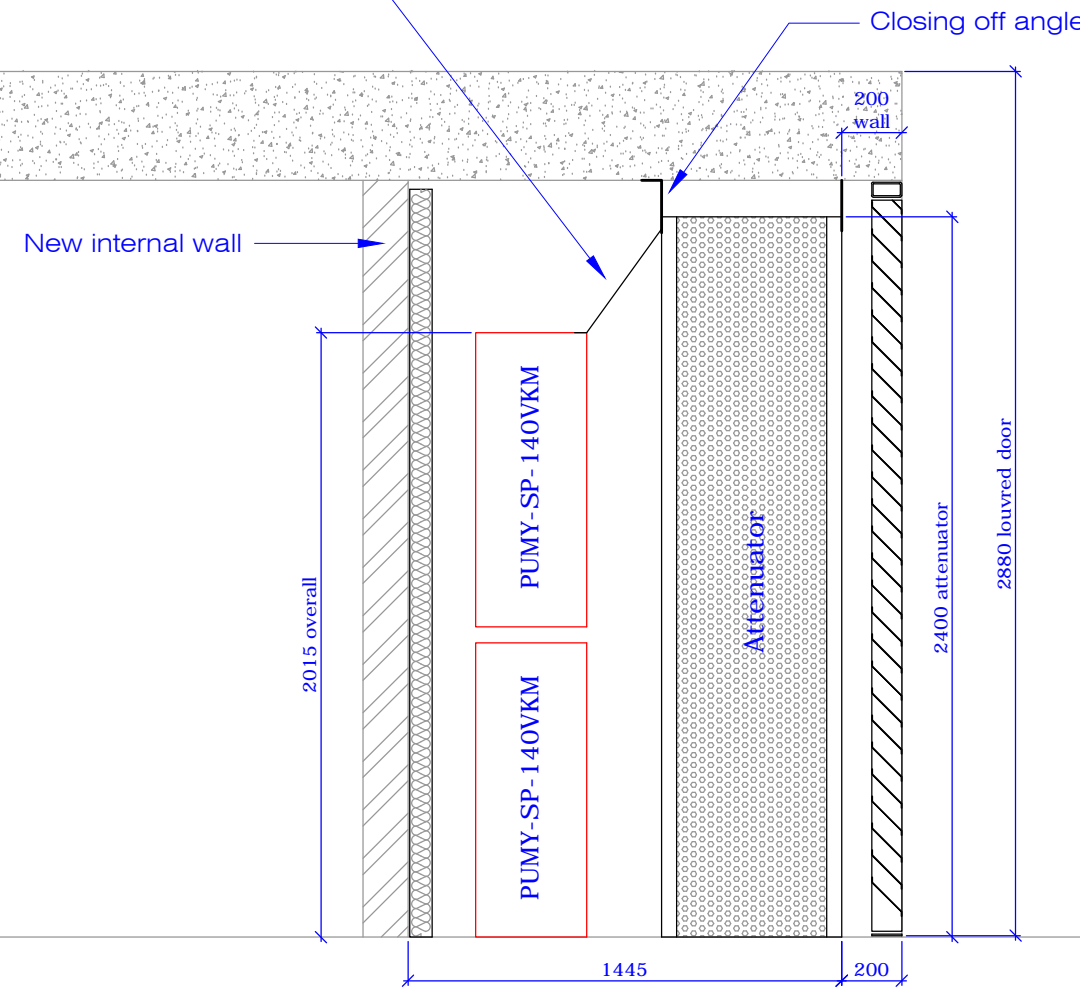
Double leaf hinged weather louvre door c/w box frame and cill plate



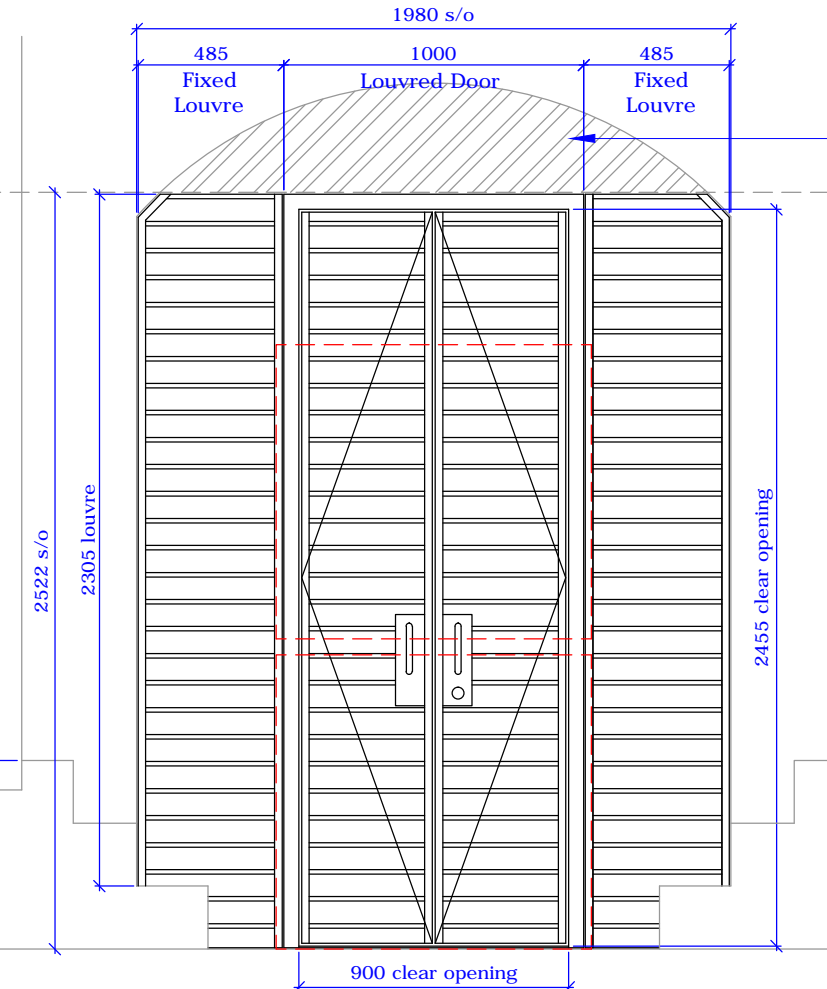
Plan View

Plenum plates

Closing off angle



Section X-X



Elevation On Doors

COPYRIGHT © 2018  
This drawing is supplied under the express condition that it is not communicated to any other person without the written permission of Noico Limited.



Patrick House, Station Road  
Hook, Hants. RG27 9HU  
Tel: 01256 766207  
Fax: 01256 768413  
email: sales@noico.co.uk

Projection:		
		Third Angle
A	First issue	17/05/18
Client: Red Square		
File no. 780344		
Project 6 Templewood Avenue Hampstead NW3 7XA		
Title Garage AC Plant Room (Option 1)		
Drawing No.	101	Rev. A
Date	17/05/2018	Scale NTS Drawn SJA