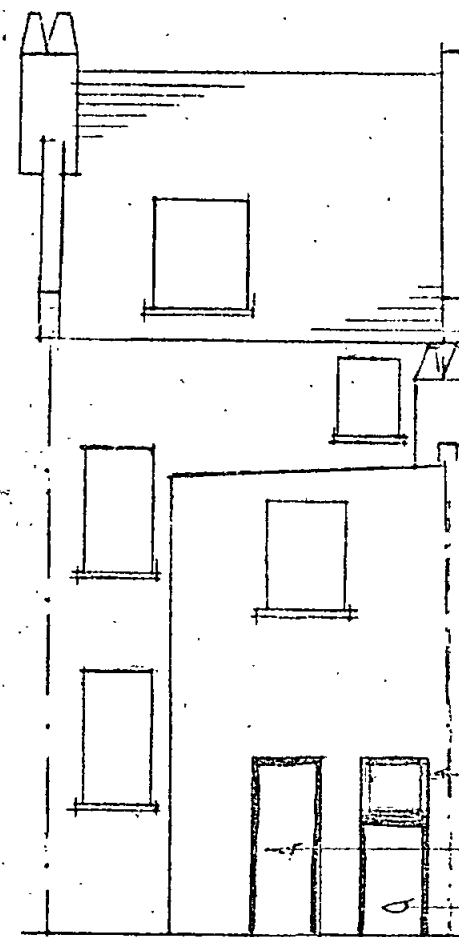
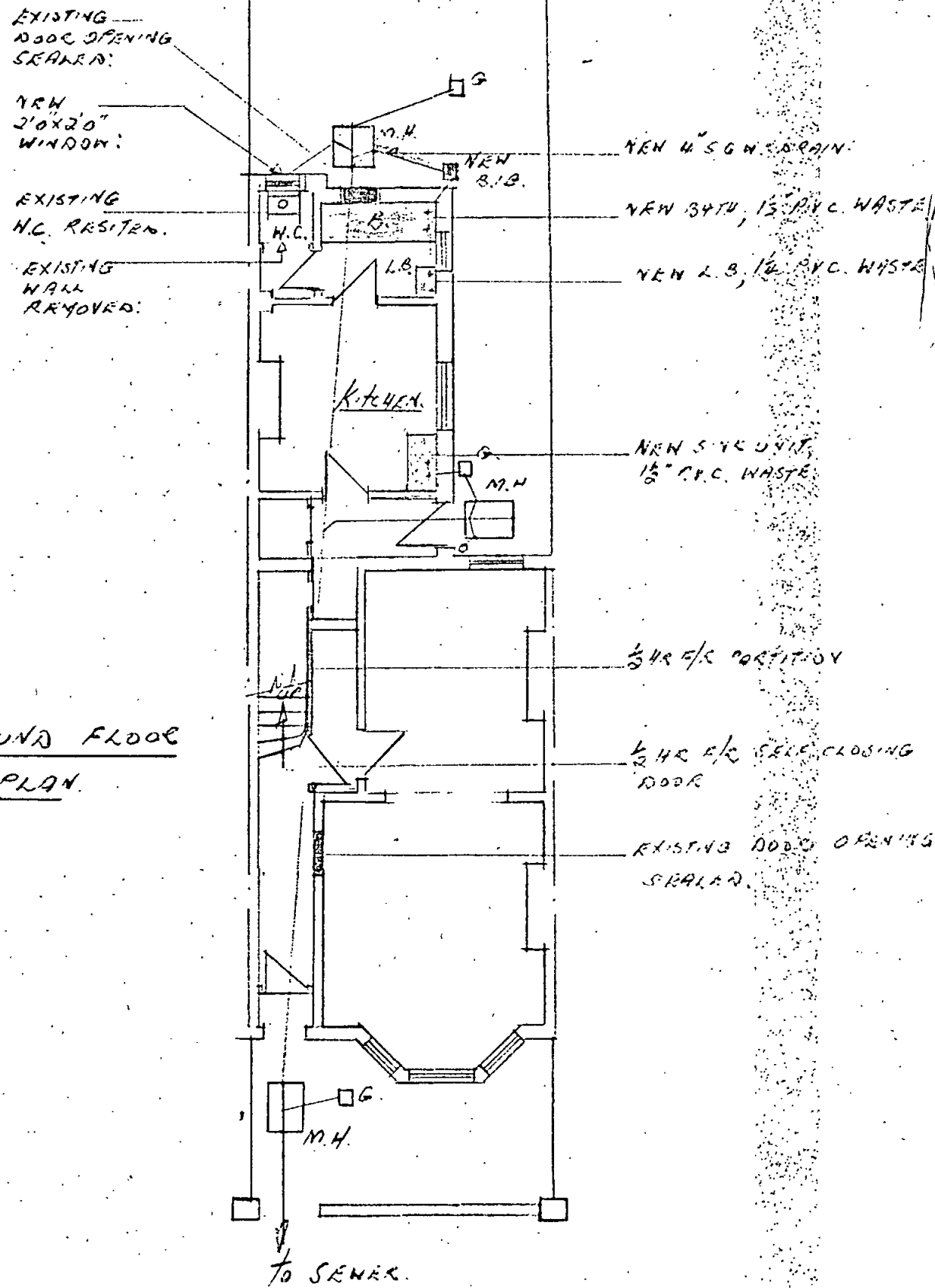
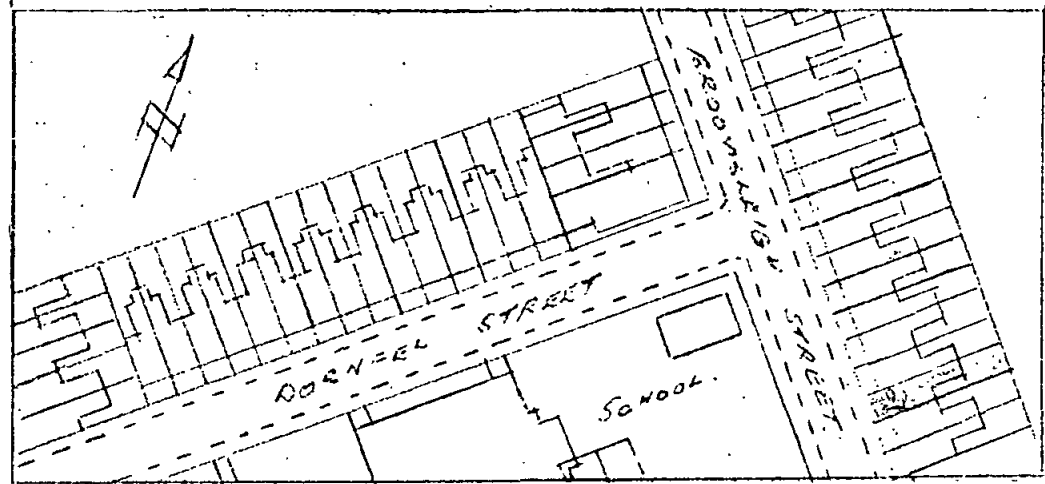


GROUND FLOOR PLAN.



REAR ELEVATION

NEW 2'0" x 2" WINDOW WITH FIREFLOW INSERT
 NEW BRICKWORK WITH A.P.C. AT APPROPRIATE LEVEL.

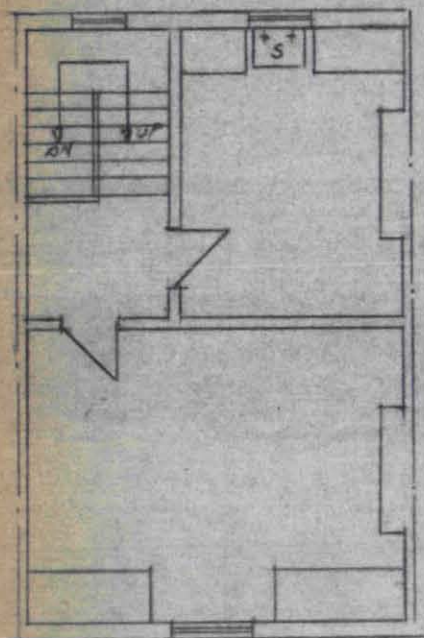


BLOCK PLAN.

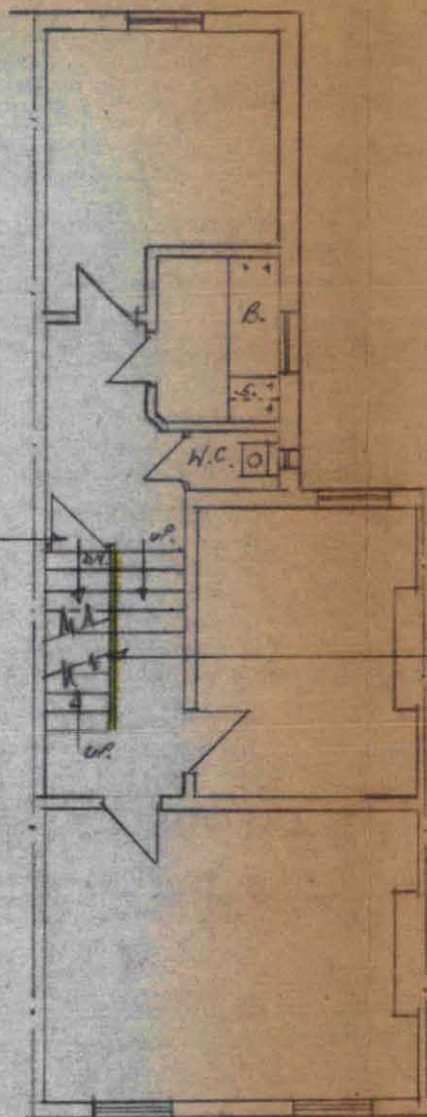
PROPOSED CONVERSION OF THE GROUND FLOOR FLAT AT N° 27 BROOMSKEIGH ST N.W.G. INTO A SELF-CONTAINED UNIT OF ACCOMMODATION.

SCALE 1" = 8'

CTP/F3/16/6/19497



TOP FLOOR
PLAN.



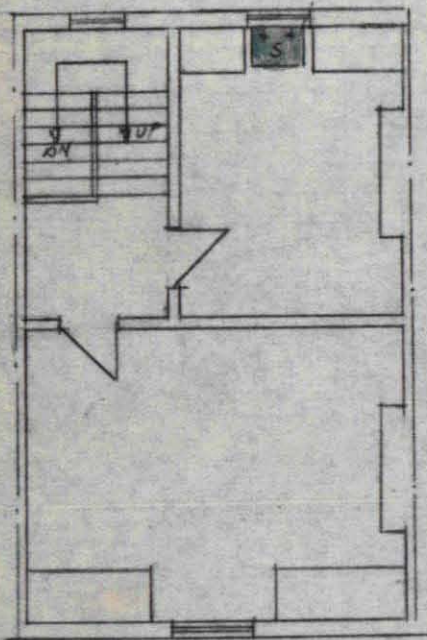
FIRST FLOOR
PLAN.

FLOOR PLANS OF UPPER FLAT
AT
Nº 27 BROOMSLEIGH ST NW6.

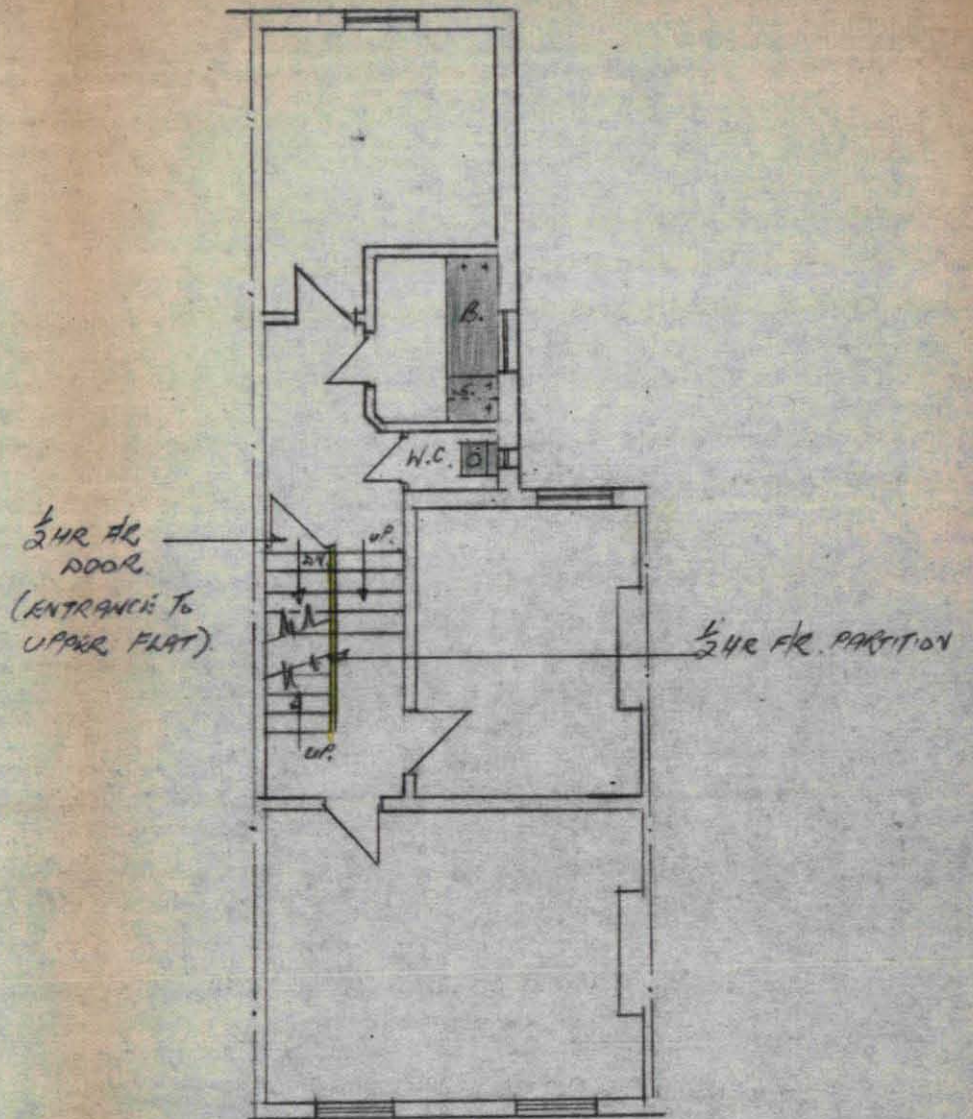
FILE COPY
REF: _____

SCALE 1" = 8'

CTP/F3/16/6/19497



TOP FLOOR
PLAN.



FIRST FLOOR
PLAN.

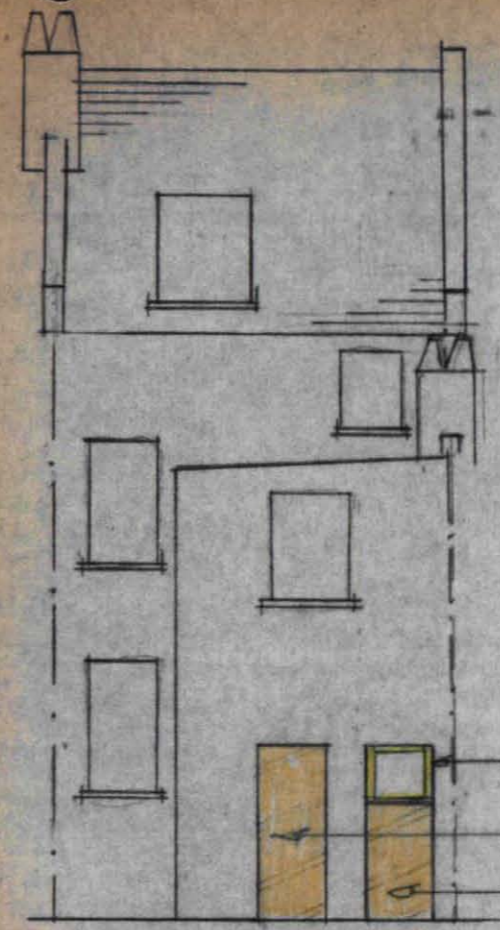
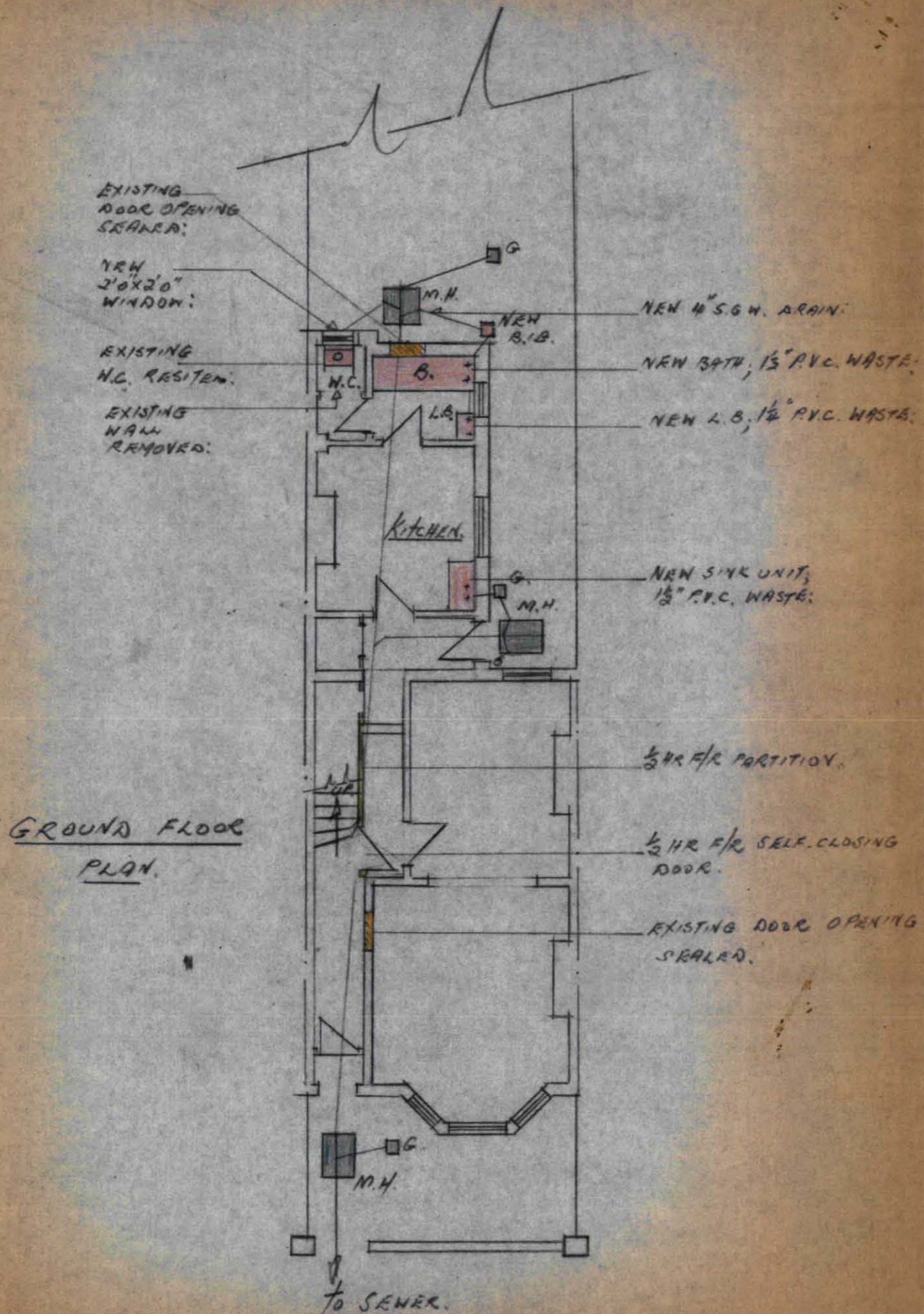
FLOOR PLANS OF UPPER FLAT

AT

Nº 27 BROOMSLEIGH ST NW6.

SCALE 1'0" = 1/8"

CTP / F3 / 16 / 6 / 1949



REAR ELEVATION



BLOCK PLAN

PROPOSED CONVERSION OF THE GROUND FLOOR FLAT AT N° 27 BROOMSLEIGH ST N.W.6. INTO A SELF-CONTAINED UNIT OF ACCOMMODATION.

FILE COPY
REF:

LONDON BOROUGH OF CAMDEN
PLANS APPROVED
DISAPPROVED
14 JAN 1975
ON BEHALF OF THE COUNCIL

CTP/F3/16/6/19497

SCALE 1/100