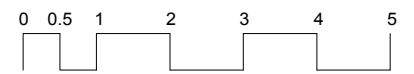
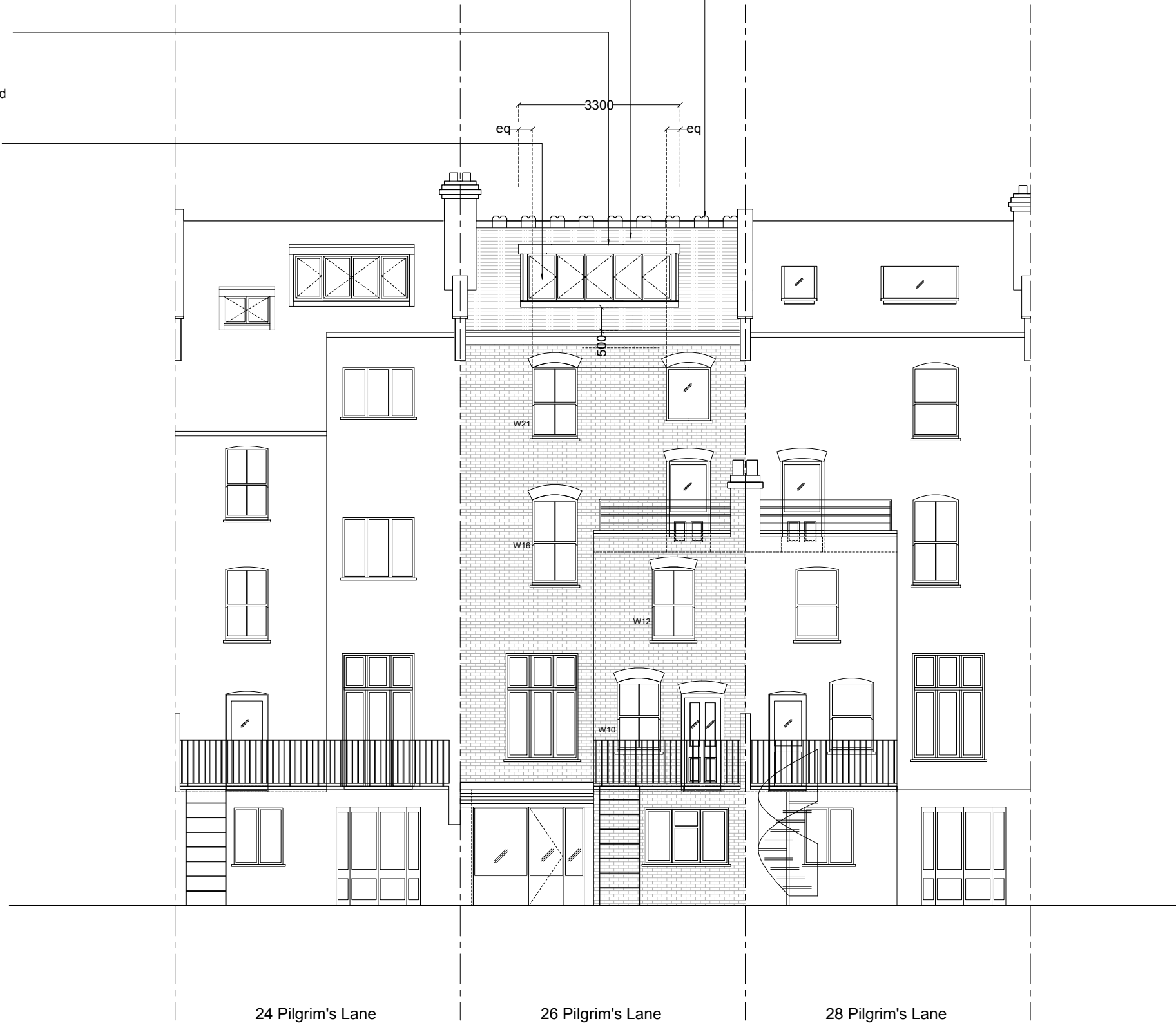


Decorative terracotta ridge cappings to be reused.

Man made slate roofing removed and replaced with natural Welsh slate to closely match colour and gauge of adjoining properties.

New painted timber frame dormer with standing seam zinc roofing and coping in dark grey finish (aligned with no.24).

New painted timber framed sliding / folding casement windows.



26 Pilgrim's Lane, Hampstead NW3 1SN

Dwg No. PLPR02 (REV C) - REAR ELEVATION AS PROPOSED
SCALE: 1:100@A3
FEBRUARY 2018

FOR PLANNING
Malcolm Fryer Architects Limited
Unit 7, The Ivories, 6 Northampton Street, N1 2HY
www.mfryer-architects.com 020 7354 7370