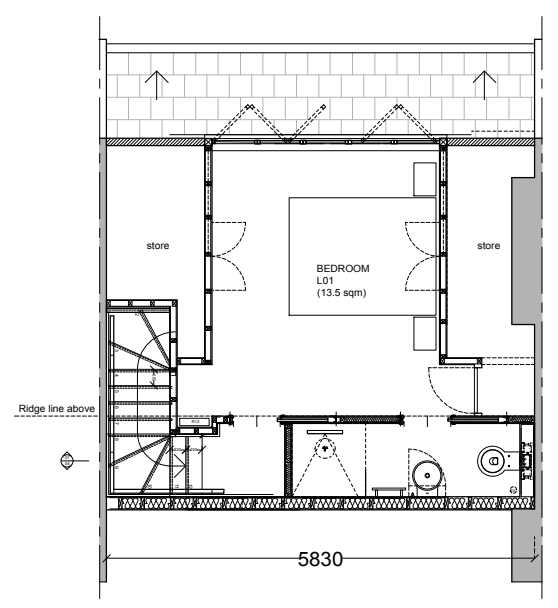


26 Pilgrim's Lane, Hampstead NW3 1SN

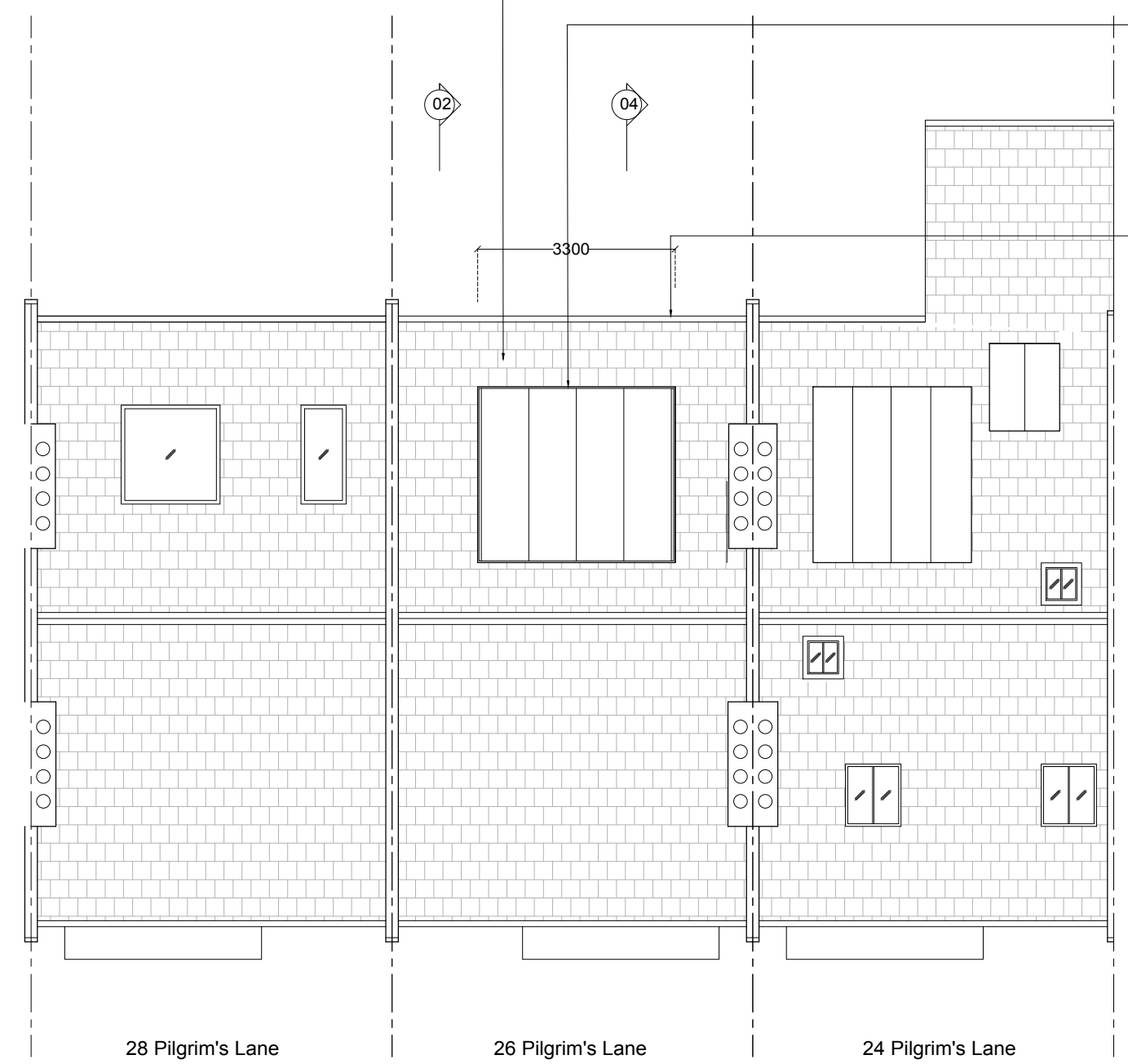
Dwg No. PLPR01(REV C) - PLANS AND SECTIONS AS PROPOSED
 SCALE: 1:100@A3
 FEBRUARY 2018

FOR PLANNING
Malcolm Fryer Architects Limited
 Unit 7, The Ivories, 6 Northampton Street, N1 2HY
 www.mfryer-architects.com 020 7354 7370

01 LOFT PARTIAL FLOOR PLAN AS PROPOSED



Man made slate roofing removed and replaced with natural Welsh slate to closely match colour and gauge of adjoining properties.

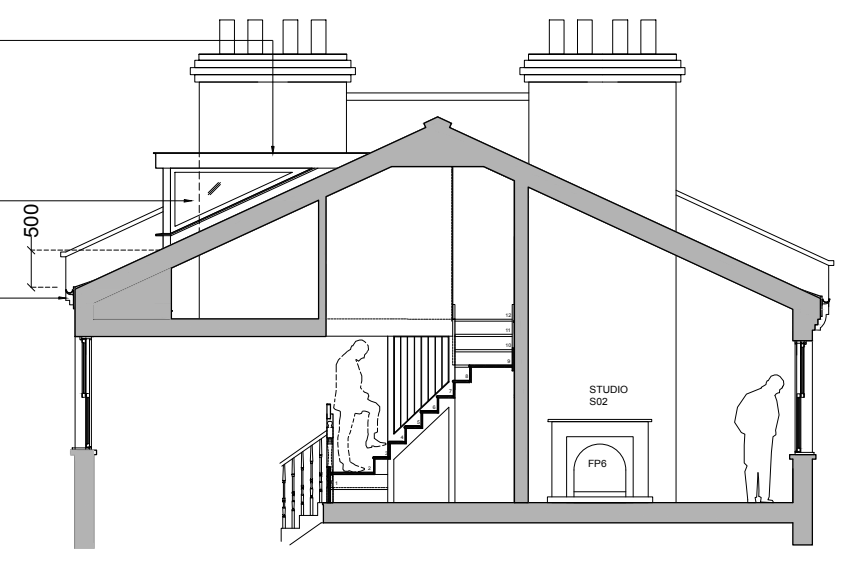


03 ROOF PLAN AS PROPOSED

New painted timber frame dormer with standing seam zinc roofing and coping in dark grey finish (aligned with no.24).

New painted timber framed fixed side windows.

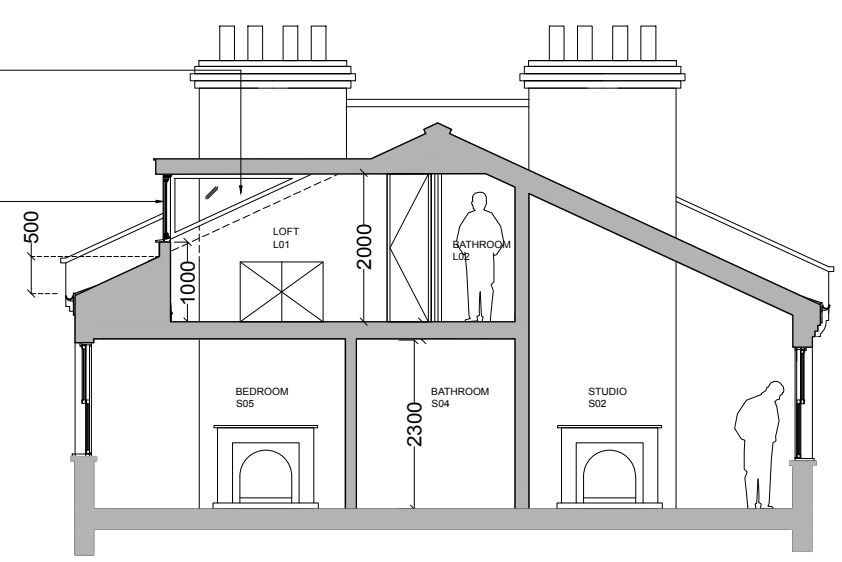
Cast iron rainwater goods repaired and sections replaced as necessary.



02 SECTION AS PROPOSED

New painted timber framed fixed side windows.

New painted timber framed casement windows.



04 SECTION AS PROPOSED