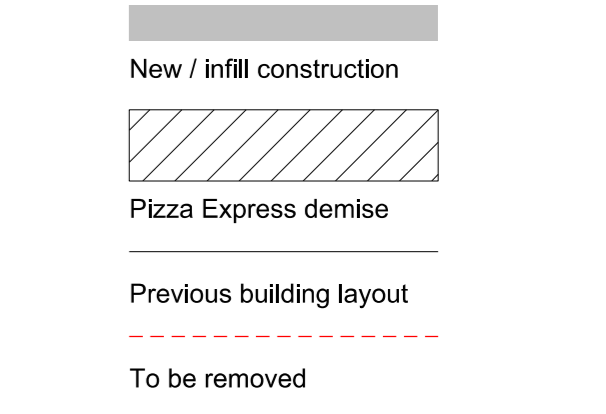


Notes
 © David Morley Architects
 Do not scale off drawing.
 Check all dimensions on site and advise any discrepancies before commencing work.
 All dimensions in millimetres unless otherwise noted.

Legend

A	Services Riser
B	Teapoint
C	Low level overhead beam
D	Entrance panel and signage
E	Solid main entrance doors with glazed aperture
F	New brickwork wall to match existing
G	Fire alarm panel
I	New stair
J	Existing fire escape door
K	Cor-ten cladding
L	Electrical riser
M	Mechanical riser
N	Smoke extract grille and ductwork
O	Wheelchair refuge
P	Smoke shaft
Q	Adjacent light well
R	Door to roof level access only
S	Pizza express duct
T	New glazed roof
U	Existing roof lantern removed and in-filled
V	New grey powder coated double glazed aluminium windows
W	Ducts for Kitchen, Event Space and Offices
X	Extract ducts
Y	Supply and return air ducts for basement set within a weatherproof upstand
Z	New obscured glazing with louvre above
AA	Kitchens extract duct
AB	Green planted building step back accessible for maintenance only
AC	Paving slabs for maintenance access to plant area
AD	New boiler flue
AE	Louvred facade for smoke clearance of lift lobby
AF	New through colour rendered insulation
AG	Heat exchange unit in Acoustic enclosure
AH	Smoke shaft vent
AI	Acoustic screen
AJ	New sedum covering to existing flat roof
AL	New below ground drainage
AM	Sump drain
AN	Vehicle turntable
AO	Pavement lights
AP	Roller shutter
AQ	New open plan office space
AR	Concrete kerb
AS	Parapet wall
AT	Upstand
AU	Floor hatch
AV	Safety Barrier
AW	Existing fire escape doorway blocked internally
AX	Concrete paving slabs
AY	Glazed canopy over
AZ	Natural stone finish cladding
BA	Glass Balustrading
BB	Balustrading for maintenance access to roofs. Metal flats painted with SS high tension cable inlits
BC	Painted timber screen
BD	Single Ply roof finish - grey
BE	Natural Ventilation passive stack chimneys
BF	New Powder coated double glazed glazing system with PV panels integrated into roof
BG	Metal standing seam roof - Zinc concealed gutters and downpipes
BH	Dry Riser Inlet
BJ	Ventilation cowl with louvred panels
BK	Sheffield Stand for cycle parking, under the stairs
BL	Hard Castle stand for cycle parking



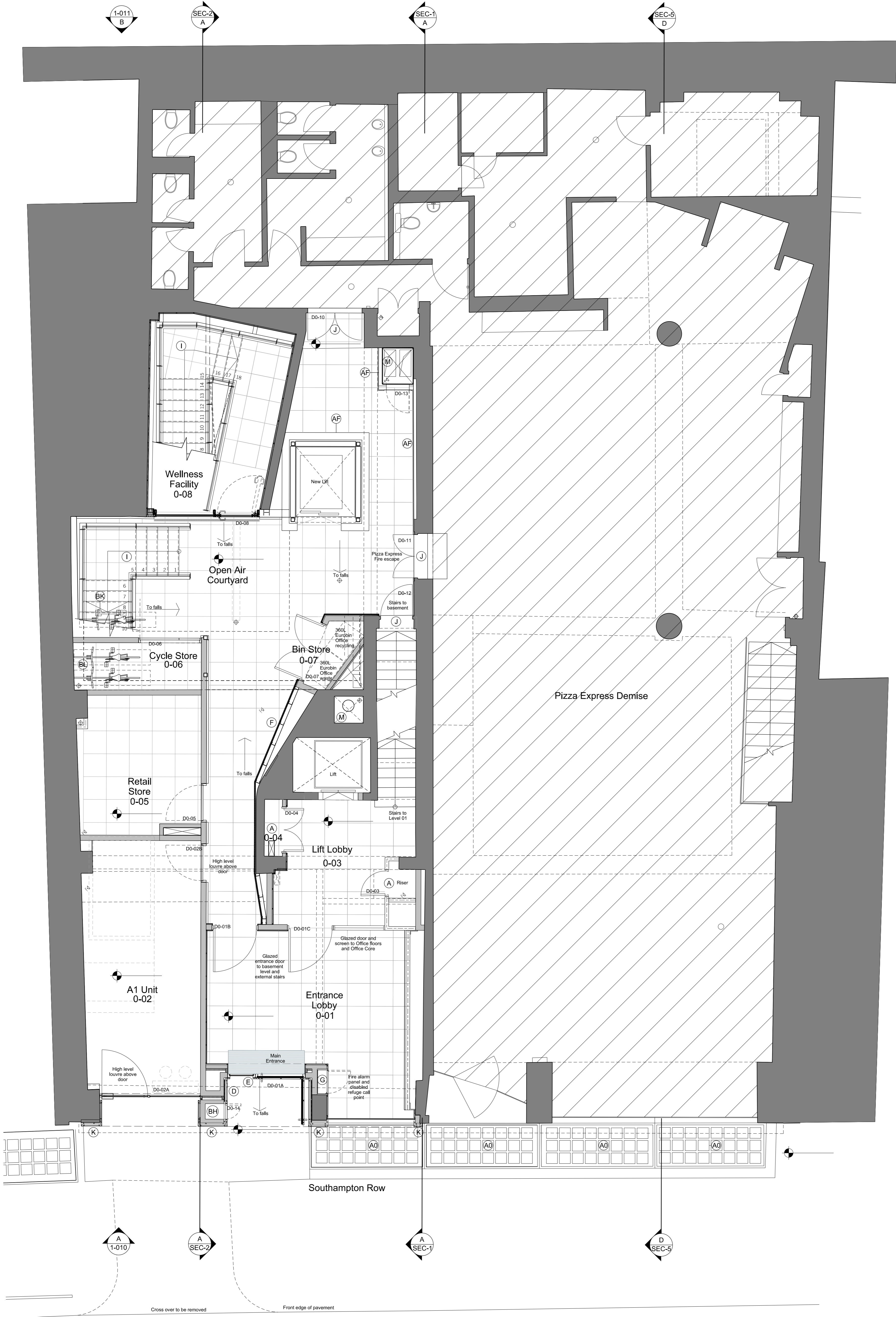
Rev.	Description	Date
P2	Cycle store changed to retail store, bin store changed to cycle store, Bin store moved from entrance lobby and courtyard. Bin store shown with one waste and one recycling bin.	10/05/18

DAVID MORLEY ARCHITECTS
 18 Hutton Place London EC1N 8RU
 Tel: 020 7430 2444 Fax: 020 7430 2443
 davidmorleyarchitects.co.uk

Client: Panatura Properties A Ltd
 Project: Synergy House

Drawing: General Arrangement Proposed Ground Floor

Job No. 568	Drawing No. 1-002	Revision P3
Date of First Issue 27/01/17	Scale @ A1 1:50	Revision Date 04/06/18



Cross over to be removed
 Front edge of pavement