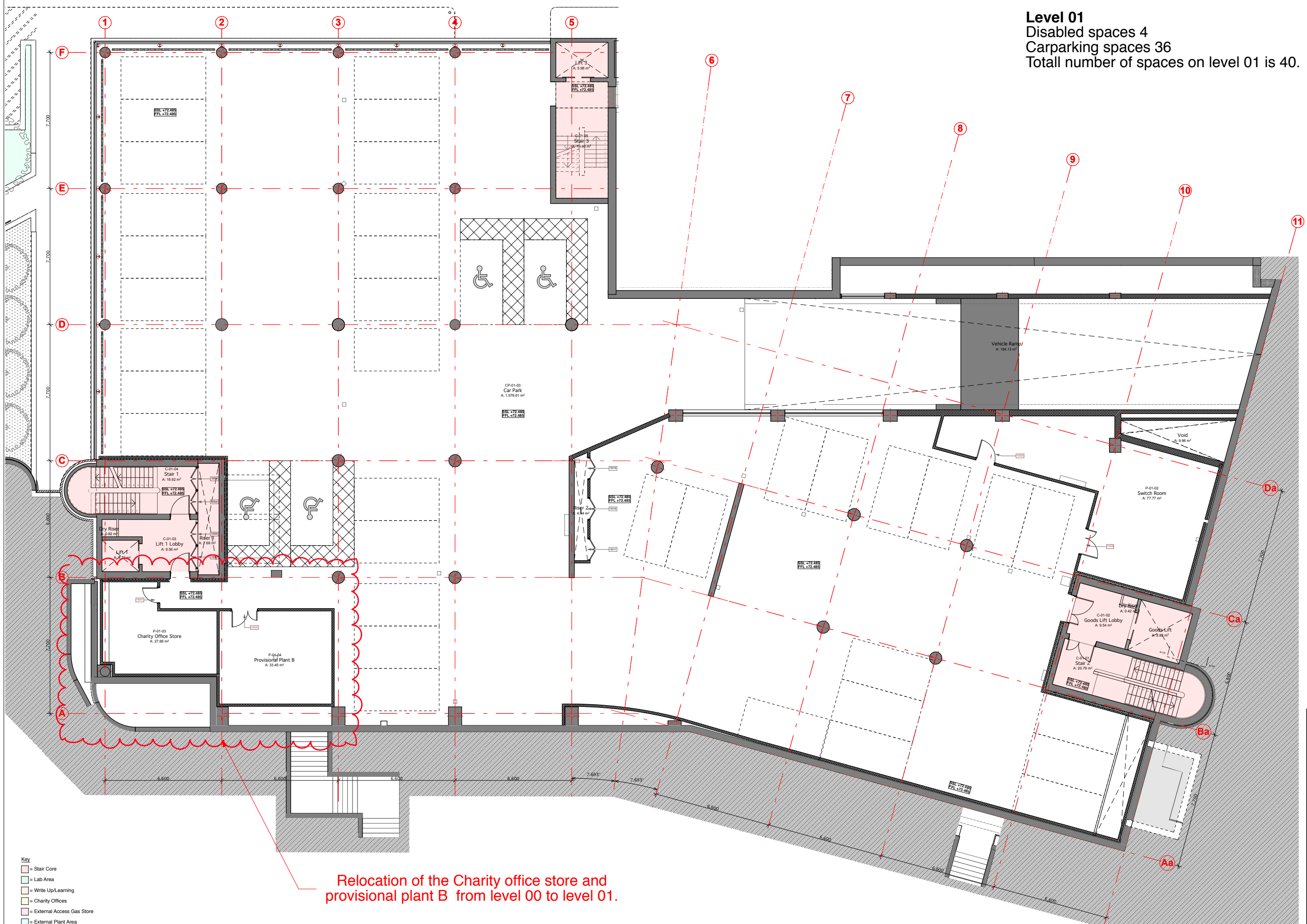


Level 01
Disabled spaces 4
Carparking spaces 36
Total number of spaces on level 01 is 40.



Relocation of the Charity office store and provisional plant B from level 00 to level 01.

Key

- = Stair Core
- = Lab Area
- = Write Up/Learning
- = Charity Offices
- = External Access Gas Store
- = External Plant Area

0 1 2 3 4 5m

Scale

NMA Application- Carparking 24.05.18

Rev	Description	Date

royal free charity WILLMOTT DIXON

Job Title
PEARS BUILDING ROYAL FREE HOSPITAL

Drawing Title
Level 01 Planning Conditions

bmj architects

Boswell Mitchell & Johnson
23-24 Easton Street
London
WC1X 0DS

T: 020 7833 9974
E: london@bmjarchitects.co.uk
www.bmjarchitects.co.uk

Glasgow/London/Aberdeen

Scale @ A1 1:100

Drawn by VG Approved by SG Date 10.05.2018

Job No. Drawing No. Revision

3340 PL(10)01