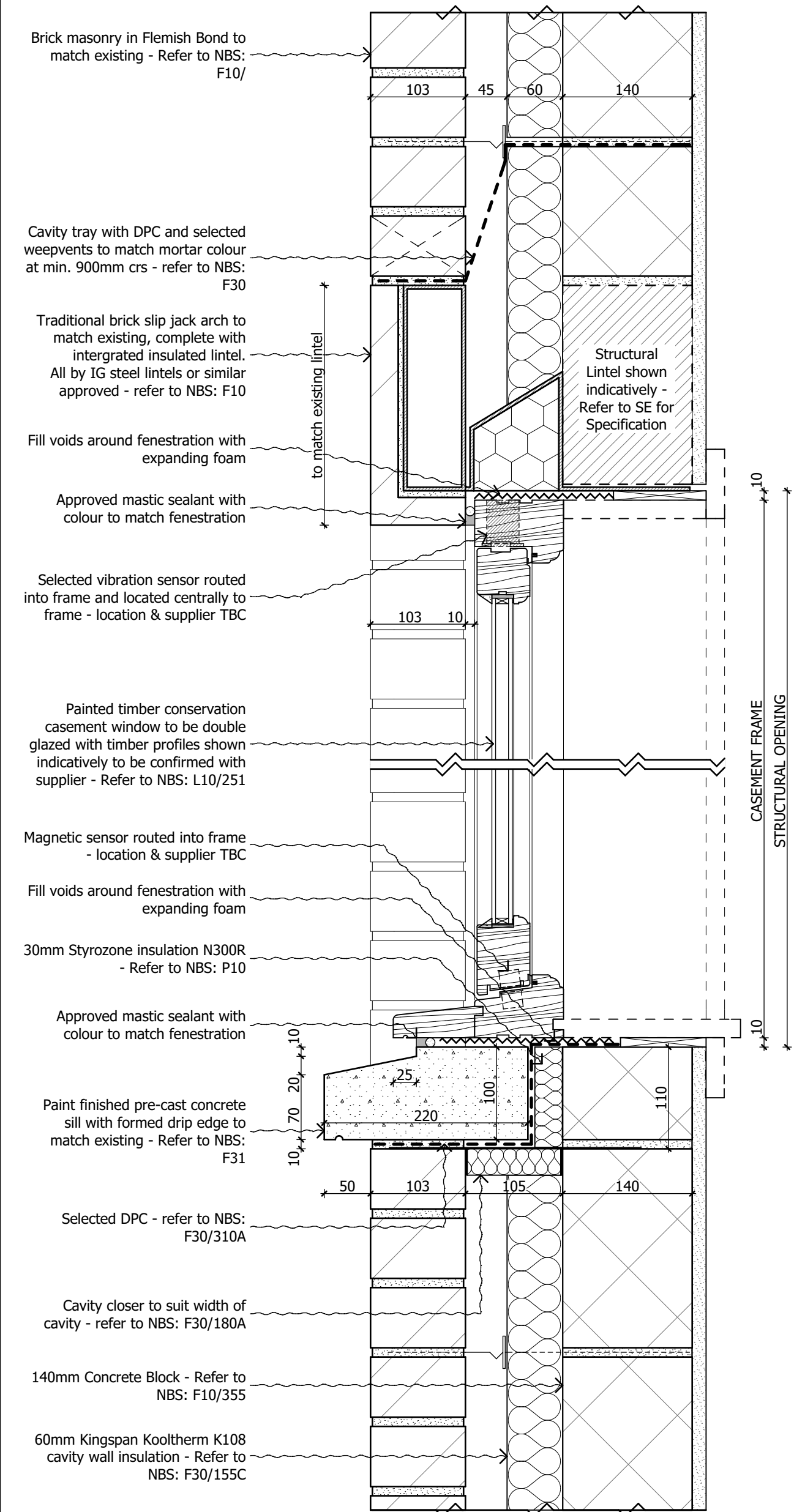
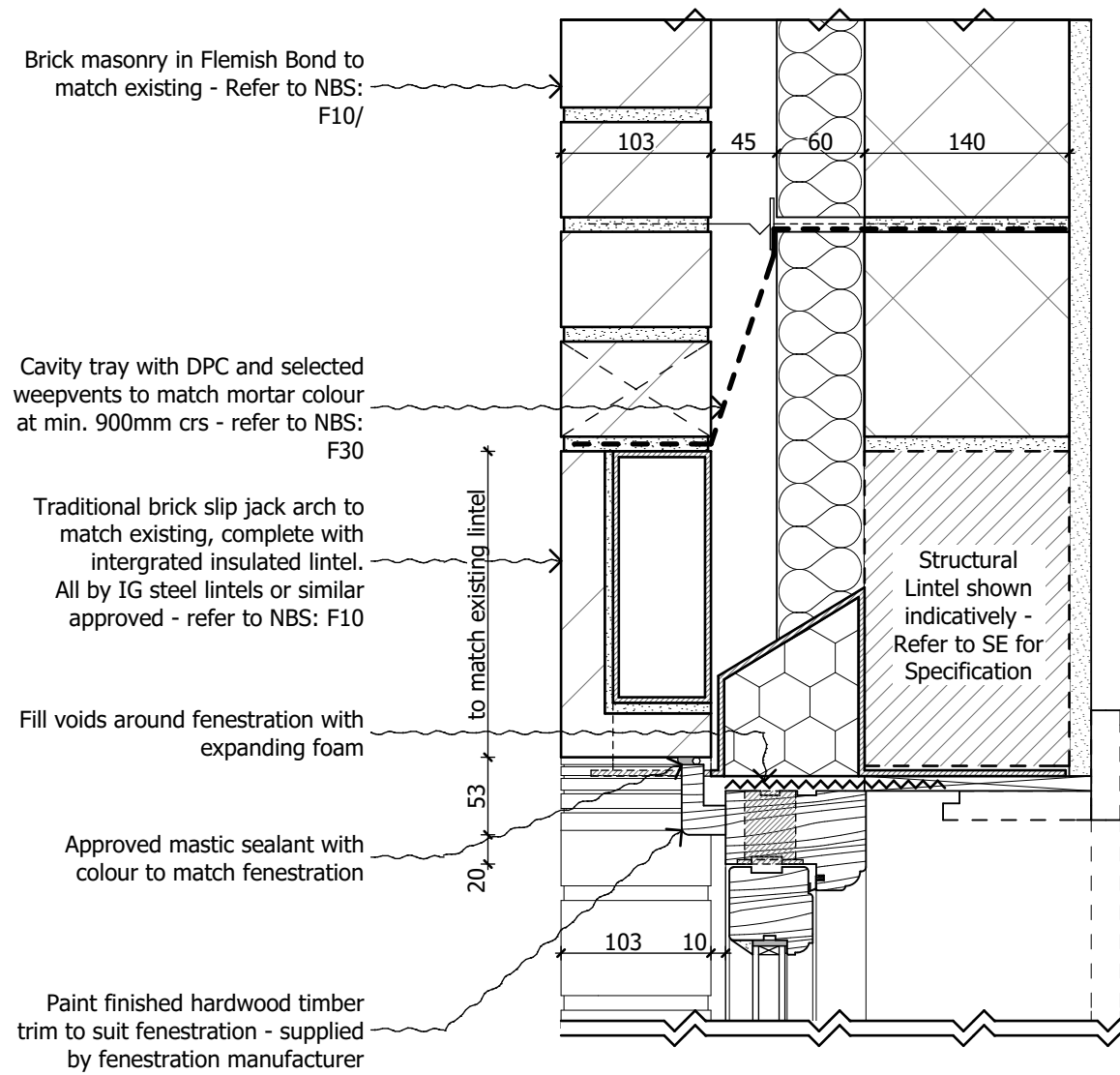


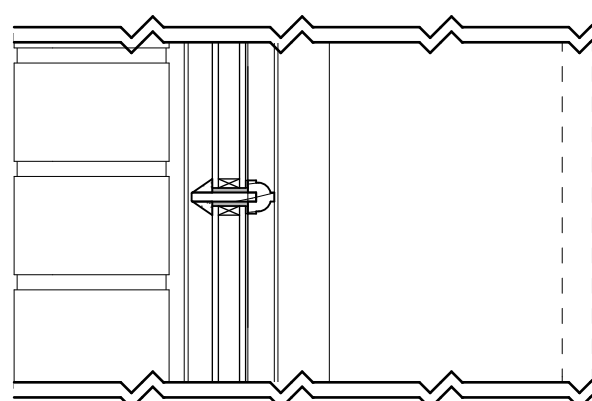
1 SCALE 1:5 @ A1, 1:10 @ A3
TYPICAL FENESTRATION PLAN DETAIL - CASEMENT WINDOW TO NEW WALL



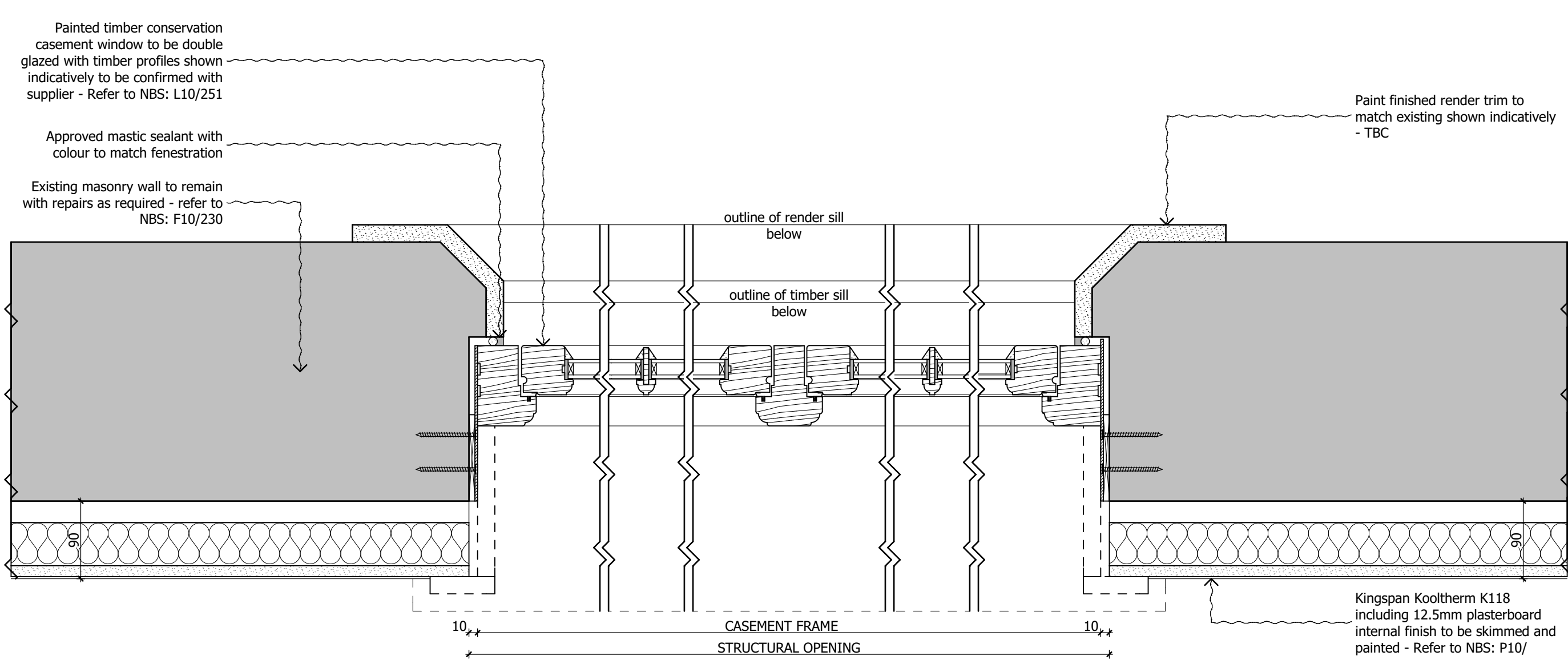
2 SCALE 1:5 @ A1, 1:10 @ A3
TYPICAL FENESTRATION SECTION DETAIL - CASEMENT WINDOW TO NEW WALL



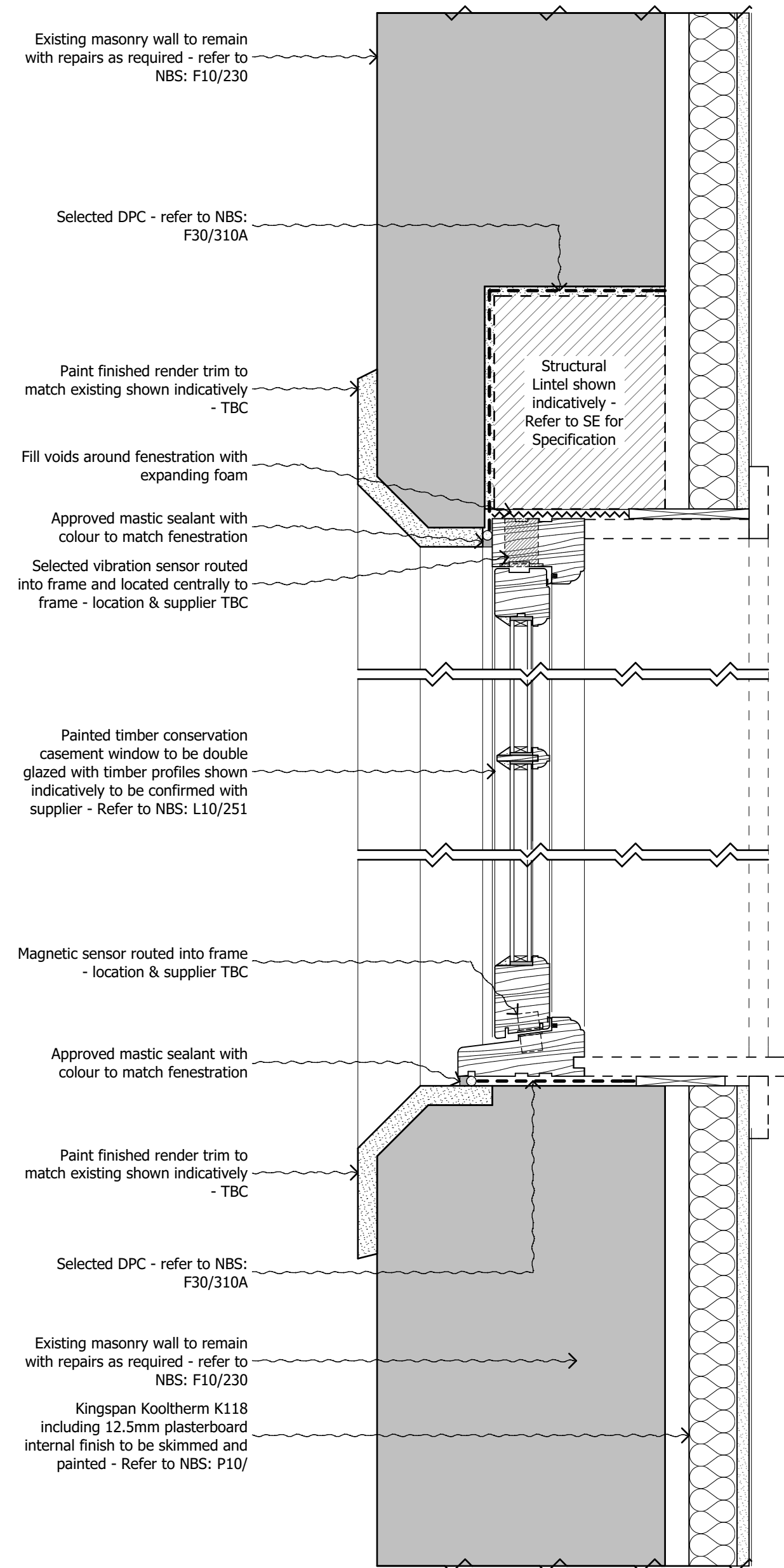
ALTERNATIVE JACK ARCH WITH CAMBER HEAD DETAIL (REFER TO ELEVATIONS)



GLAZING BAR DETAIL (REFER TO FENESTRATION SCHEDULE FOR LOCATION)



3 SCALE 1:5 @ A1, 1:10 @ A3
TYPICAL FENESTRATION PLAN DETAIL - CASEMENT WINDOW TO EXISTING WALL



4 SCALE 1:5 @ A1, 1:10 @ A3
TYPICAL FENESTRATION SECTION DETAIL - CASEMENT WINDOW TO EXISTING WALL

DO NOT SCALE FROM THIS DRAWING

Figured dimensions only are to be taken from this drawing. All dimensions are to be checked on site before any work is put in hand. If in doubt, ask.

All SHH drawings to be read in conjunction with relevant SHH Finishes, Sanitaryware, Lighting & Ironmongery schedules.

Any discrepancies to be highlighted to SHH prior to procurement and in good time.

Copyright © Spence Harris Hogan Limited 2018
Registered in England & Wales. Registered No. 261 0615
SHH is the trading name of Spence Harris Hogan Limited

Legends & Notes:

CCF0.00	Caenwood Cottage Ground Floor
CCF1.00	Caenwood Cottage First Floor
GHF0.00	Gatehouse Ground Floor
GHF1.00	Gatehouse First Floor
CCSK00	Caenwood Cottage Rooflight
GH5K00	Gatehouse Rooflight
VS	Vibration Sensor
MC	Magnetic Contact

General Notes:

1. All fenestration profiles and weather-proofing show design intent only - TBC by window manufacturer
2. Glazing within risk areas to be toughened in accordance with BS6206
3. All fenestration structural openings to be measured and checked on site by manufacturer prior to fabrication
4. All systems/ products to be installed to manufacturer specifications and details
5. Position of magnetic contacts and vibration sensors subject to approval by suppliers and installers
6. All fenestration details are indicative only. Construction details by window manufacturer subject to Architect approval
7. All windows and external doors to receive routed in seals