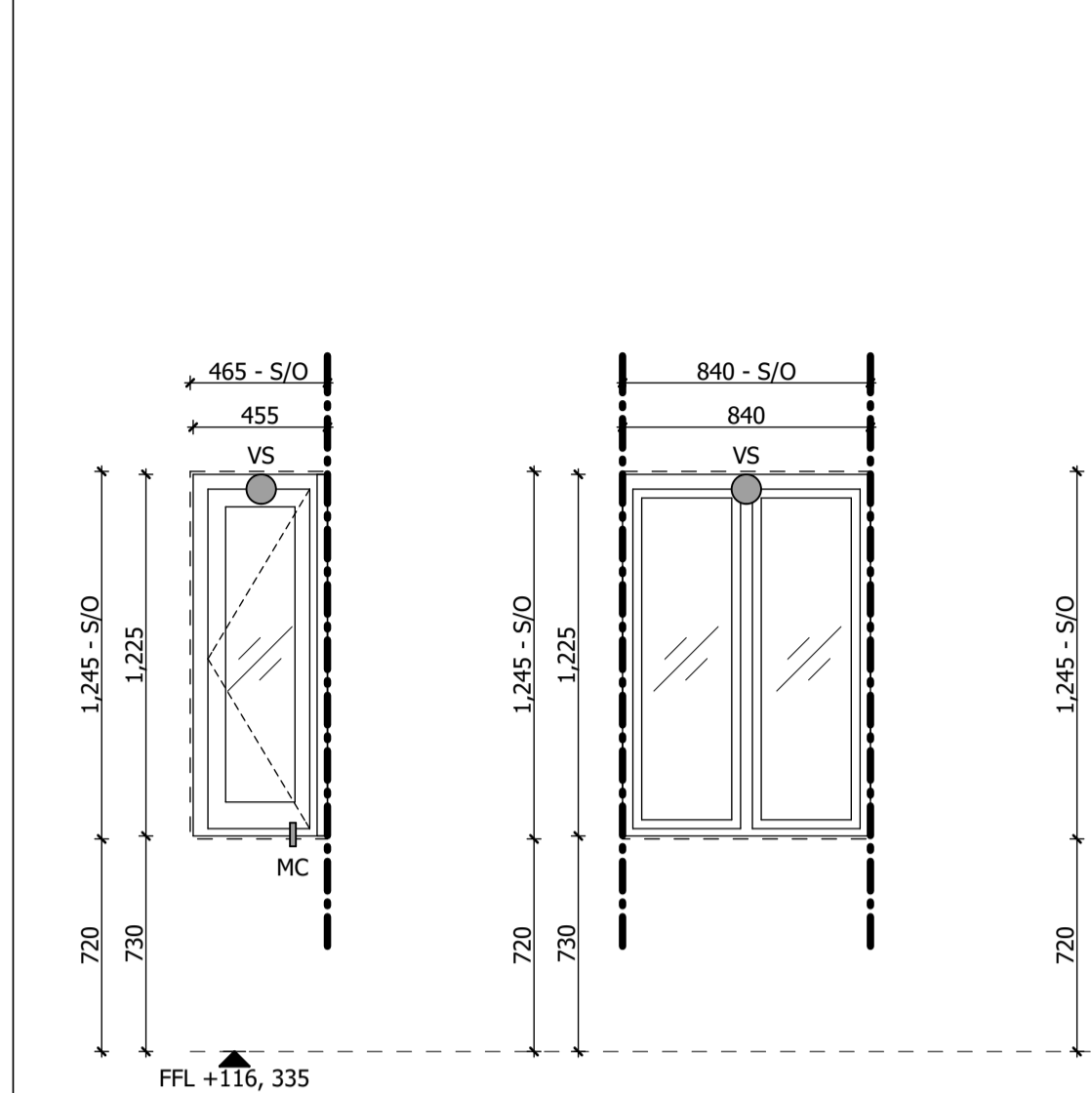


Reference	Location	New / Existing
<b>GHF1.01</b>	GH1.01 Bedroom	<b>New</b>
Fire Rating	N/A	Acoustic Rating
	N/A	U Value
		0.16 W/m <sup>2</sup> K



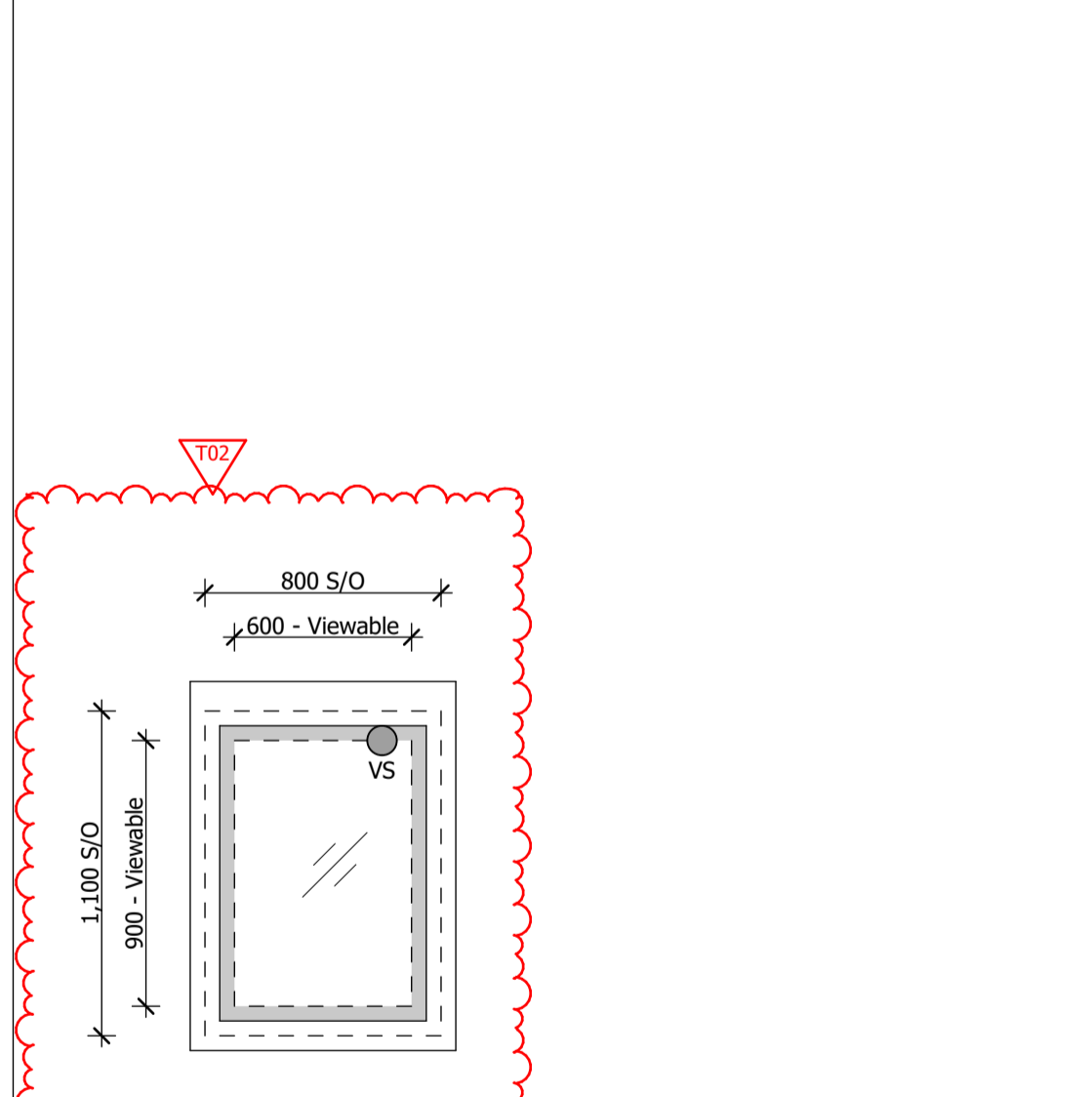
REFER TO NBS: L10/251

FENESTRATION SPECIFICATION						Notes
Item	Push Side		Pull Side			
	Type	Finish	Type	Finish		
Leaf	-	-	-	-	-	
Frame	-	-	-	-	-	
Sill	-	-	-	-	-	
Shutters	-	-	-	-	-	
Architraves	-	-	-	-	-	
Reveal Lining	-	-	-	-	-	
Glazing	-	-	-	-	-	

IRONMONGERY SCHEDULE						Notes
Item	Push Side		Pull Side			
	Type	Finish	Type	Finish		
Handle	-	-	-	-	-	
Fastener/ Lock	-	-	-	-	-	
Stay (C)/ Stop (S)	-	-	-	-	-	
Hinge/ Sliding Gear	-	-	-	-	-	
Trickle Vent	-	-	-	-	-	
Seals	-	-	-	-	-	
Misc. Accessories	-	-	-	-	-	

Notes: - New window to replace existing window to match  
- Refer to NBS: L10/251

Reference	Location	New / Existing
<b>GHSK01</b>	GHG.03 Kitchen	<b>New</b>
Fire Rating	N/A	Acoustic Rating
	N/A	U Value
		0.16 W/m <sup>2</sup> K



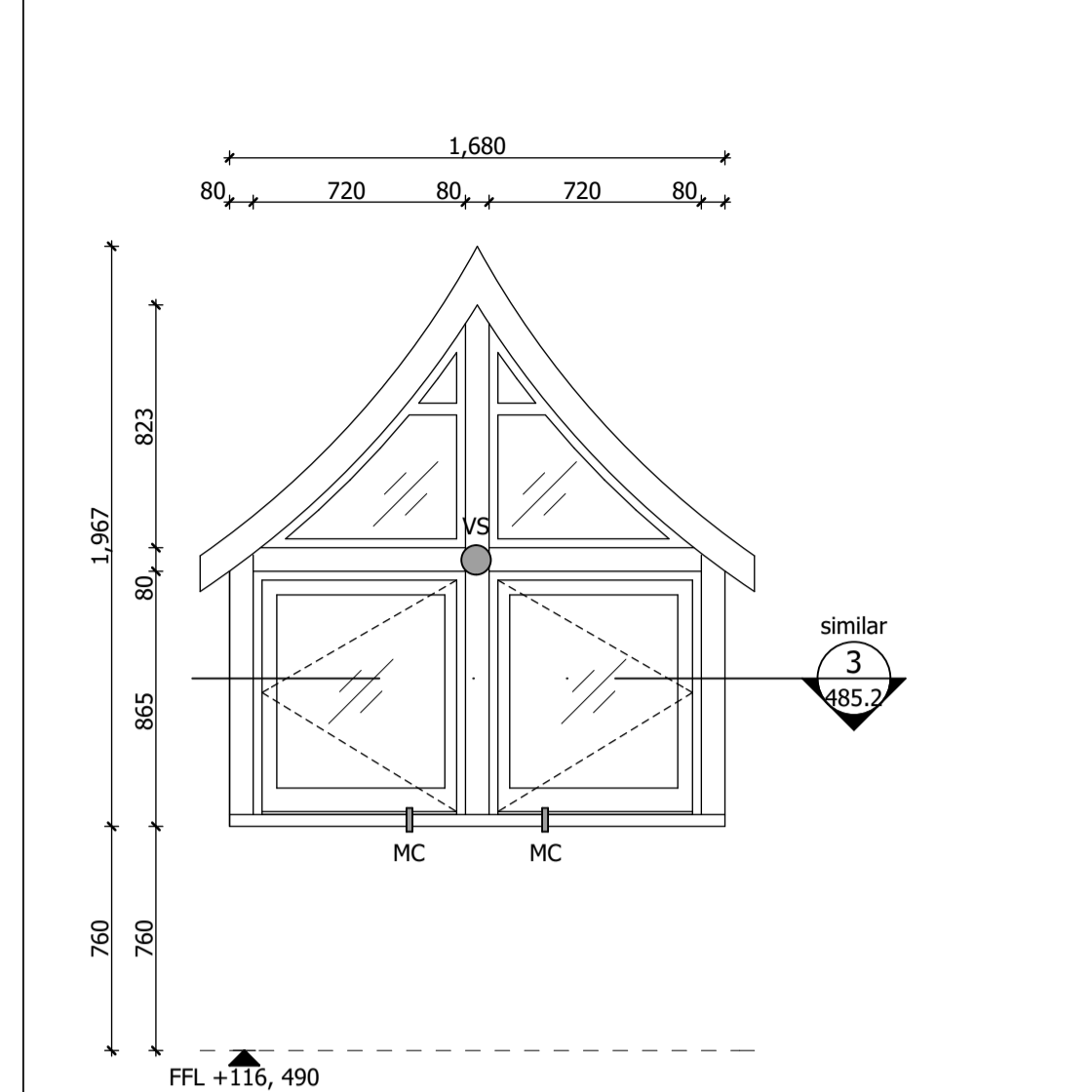
REFER TO NBS: L10/480A

FENESTRATION SPECIFICATION						Notes
Item	Push Side		Pull Side			
	Type	Finish	Type	Finish		
Leaf	-	-	-	-	-	
Frame	-	-	-	-	-	
Sill	-	-	-	-	-	
Shutters	-	-	-	-	-	
Architraves	-	-	-	-	-	
Reveal Lining	-	-	-	-	-	
Glazing	-	-	-	-	-	

IRONMONGERY SCHEDULE						Notes
Item	Push Side		Pull Side			
	Type	Finish	Type	Finish		
Handle	-	-	-	-	-	
Fastener/ Lock	-	-	-	-	-	
Stay (C)/ Stop (S)	-	-	-	-	-	
Hinge/ Sliding Gear	-	-	-	-	-	
Trickle Vent	-	-	-	-	-	
Seals	-	-	-	-	-	
Misc. Accessories	-	-	-	-	-	

Notes: -

Reference	Location	New / Existing
<b>GHF1.02</b>	GH1.02 Lobby	<b>New</b>
Fire Rating	N/A	Acoustic Rating
	N/A	U Value
		0.16 W/m <sup>2</sup> K



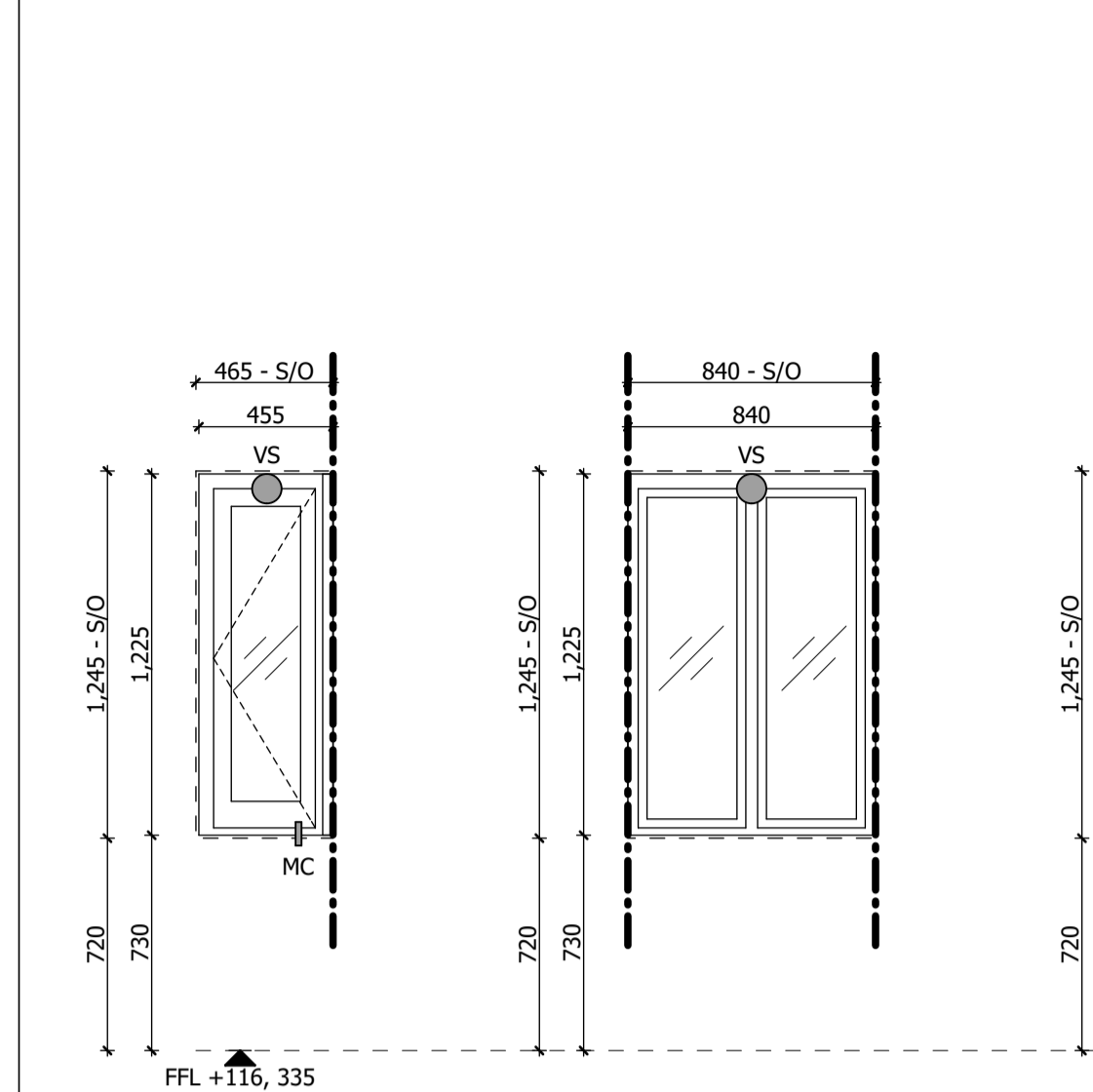
REFER TO NBS: L10/251

FENESTRATION SPECIFICATION						Notes
Item	Push Side		Pull Side			
	Type	Finish	Type	Finish		
Leaf	-	-	-	-	-	
Frame	-	-	-	-	-	
Sill	-	-	-	-	-	
Shutters	-	-	-	-	-	
Architraves	-	-	-	-	-	
Reveal Lining	-	-	-	-	-	
Glazing	-	-	-	-	-	

IRONMONGERY SCHEDULE						Notes
Item	Push Side		Pull Side			
	Type	Finish	Type	Finish		
Handle	-	-	-	-	-	
Fastener/ Lock	-	-	-	-	-	
Stay (C)/ Stop (S)	-	-	-	-	-	
Hinge/ Sliding Gear	-	-	-	-	-	
Trickle Vent	-	-	-	-	-	
Seals	-	-	-	-	-	
Misc. Accessories	-	-	-	-	-	

Notes: - New window to replace existing window to match  
- Refer to NBS: L10/251

Reference	Location	New / Existing
<b>GHF1.03</b>	GH1.03 Bathroom	<b>New</b>
Fire Rating	N/A	Acoustic Rating
	N/A	U Value
		0.16 W/m <sup>2</sup> K



REFER TO NBS: L10/251

FENESTRATION SPECIFICATION						Notes
Item	Push Side		Pull Side			
	Type	Finish	Type	Finish		
Leaf	-	-	-	-	-	
Frame	-	-	-	-	-	
Sill	-	-	-	-	-	
Shutters	-	-	-	-	-	
Architraves	-	-	-	-	-	
Reveal Lining	-	-	-	-	-	
Glazing	-	-	-	-	-	

IRONMONGERY SCHEDULE						Notes
Item	Push Side		Pull Side			
	Type	Finish	Type	Finish		
Handle	-	-	-	-	-	
Fastener/ Lock	-	-	-	-	-	
Stay (C)/ Stop (S)	-	-	-	-	-	
Hinge/ Sliding Gear	-	-	-	-	-	
Trickle Vent	-	-	-	-	-	
Seals	-	-	-	-	-	
Misc. Accessories	-	-	-	-	-	

Notes: - New window to replace existing window to match  
- Refer to NBS: L10/251

**DO NOT SCALE FROM THIS DRAWING**

Figured dimensions only are to be taken from this drawing. All dimensions are to be checked on site before any work is put in hand. If in doubt, ask.

All SHH drawings to be read in conjunction with relevant SHH Finishes, Sanitaryware, Lighting & Ironmongery schedules.

Any discrepancies to be highlighted to SHH prior to procurement and in good time.

Copyright © Spence Harris Hogan Limited 2018  
Registered in England & Wales. Registered No. 261 0615  
SHH is the trading name of Spence Harris Hogan Limited

Legends & Notes:

CCF0.00	Caenwood Cottage Ground Floor
CCF1.00	Caenwood Cottage First Floor
GHF0.00	Gatehouse Ground Floor
GHF1.00	Gatehouse First Floor
CCSK00	Caenwood Cottage Rooflight
GHSK00	Gatehouse Rooflight
VS	Vibration Sensor
MC	Magnetic Contact

General Notes:

- All fenestration profiles and weather-proofing show design intent only - TBC by window manufacturer
- Glazing within risk areas to be toughened in accordance with BS6206
- All fenestration structural openings to be measured and checked on site by manufacturer prior to fabrication
- All systems' products to be installed to manufacturer specifications and details
- Position of magnetic contacts and vibration sensors subject to approval by suppliers and installers
- All fenestration details are indicative only. Construction details by window manufacturer subject to Architect approval
- All windows and external doors to receive routed in seals

PL01	04.06.18	Planning Issue	JD
Rev	Date	Descriptor	Atr.

SHH ARCHITECTS | INTERIORDESIGNERS  
RIBA MEMBER  
Chartered Practise

1 Vencourt Place, Ravenscourt Park  
HammerSmith, London W6 9NU  
Phone: +44 (0) 20 8600 4171 Email: info@shh.co.uk  
shh.co.uk

Project:

**Athlone House - Gate House**

Hampstead Lane  
London

Client:  
Private Client

Drawing Title:  
400 Construction Details

**Fenestration Schedule**

(Project number)DWG number_Revision:	Checked:
<b>(817)GH-480.3_PL01</b>	AT