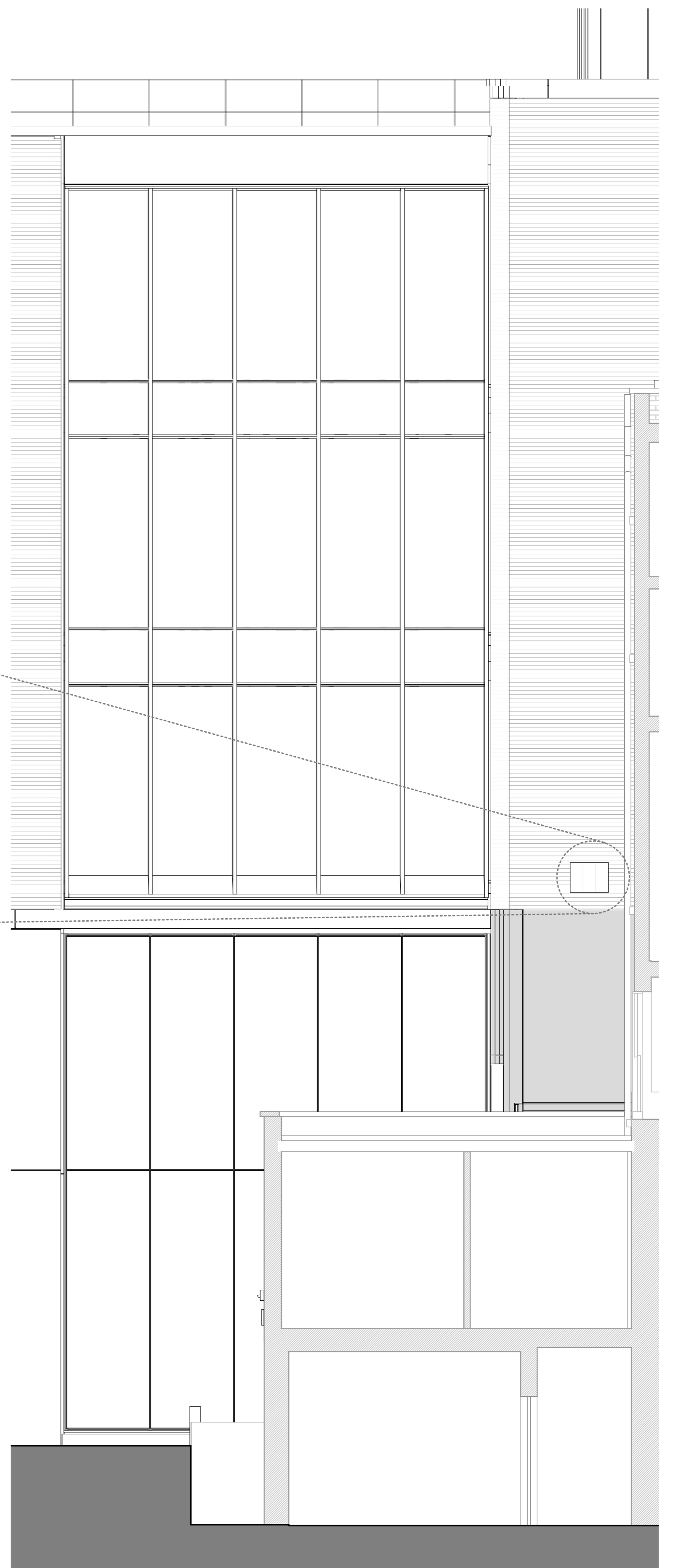
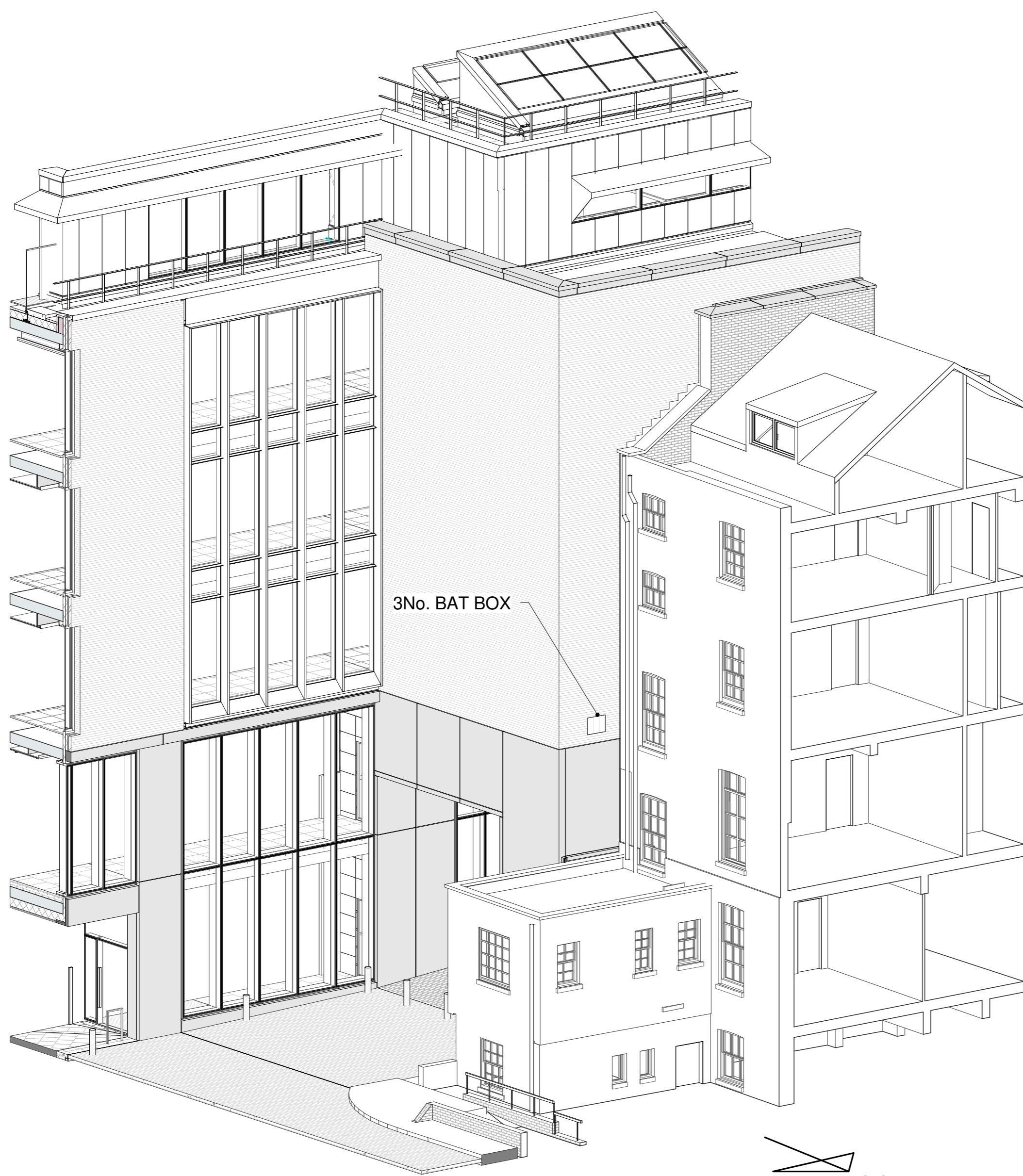


DETAIL LOCATION FOR BAT TUBE.
NOTE SECTION TAKEN PARALLEL WITH WALL

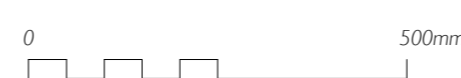


SECTION A-A SHOWING WESTERN SIDE OF SOUTHERN
ELEVATION TO No. 26 GABLE
REFER TO KEY FOR LOCATION
NOTE SECTION TAKEN PARALLEL WITH WALL



3D VIEW OF SOUTH ELEVATION
REFER TO KEY FOR LOCATION

Rev.	Date	Description
P01	29/05/18	First issue



Nicholas Hare Architects 3 Bamsbury Square London N1 1JL		project	UCL New Student Centre
telephone	+44 (0)20 7619 1670	for	University College London
fax	+44 (0)20 7619 1671	site	Bat Box Locations
e-mail	689ucl@nicholashare.co.uk		(689)
status	Planning To be read in conjunction with all relevant information - do not scale	scale	1:10
		size	A1
		drawing number	031-51-0100-DRA-PL503-ZZ
		rev.	P01

