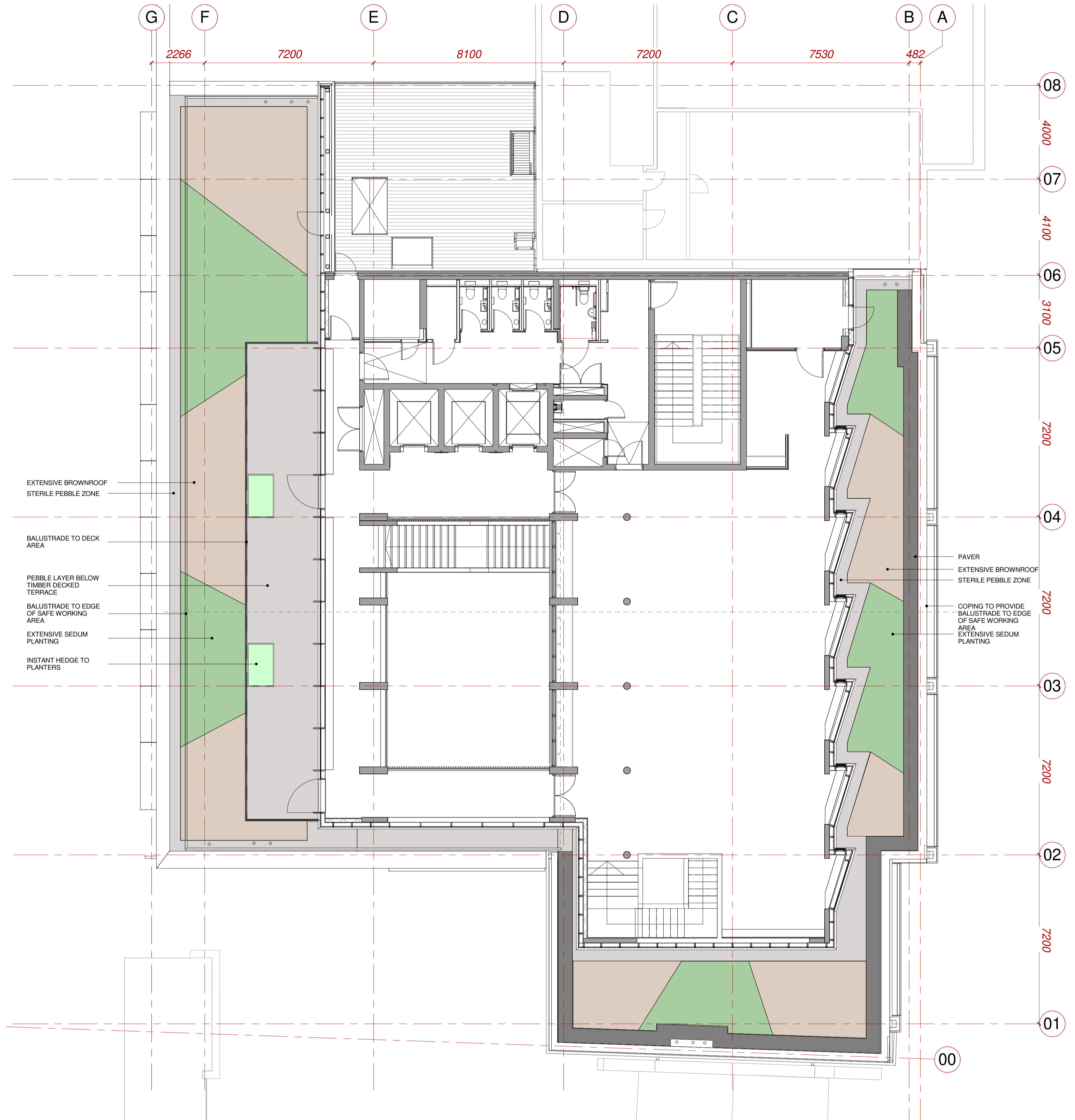


KEY

- EXTENSIVE 'BROWNROOF' SUBSTRATES OF VARYING 100-300mm DEPTH AS PER Q37/130. AREA 50% PLUG PLANTED AS PER BIO-DIVERSE ROOF MIX.
- EXTENSIVE SEDUM PLUG PLANTING (AS PER BAUDER XF300 SEDUM MIX) TO BROWNROOF SUBSTRATES OF 100mm DEPTH AS PER Q37/130
- INSTANT HEDGING TO RAISED PLANTERS AS PER Q31 SPECIFICATION
- STERILE ZONE / DRAINAGE BRAKE - AREA TO BE FILLED USING 40mm GRADED AND WASHED ORNAMENTAL PEBBLE BALLAST
- 600x600mm PAVER TO PROVIDE MAINTENANCE ACCESS



Level 4 Roof Garden

Biodiverse 'Brown Roof' - (UK Provenance Native species plugs planted @ 20/m2) (111m/2)

Mix %	Qty	Name	Form	Grth (cm)	Hght (cm)	Clear Stem (cm)	Root Type	Size	Comments
10.00	260	Armeria maritima	Plug				PL	50cc min.	Established root; Sept to April planting; British native-origin
10.00	260	Daucus carota	Plug				PL	50cc min.	Established root; Sept to April planting; British native-origin
10.00	260	Festuca ovina	Plug				PL	50cc min.	Established root; Sept to April planting; British native-origin
10.00	260	Festuca rubra	Plug				PL	50cc min.	Established root; Sept to April planting; British native-origin
10.00	260	Leucanthemum vulgare	Plug				PL	50cc min.	Established root; Sept to April planting; British native-origin
10.00	260	Plantago lanceolata	Plug				PL	50cc min.	Established root; Sept to April planting; British native-origin
10.00	260	Primula veris	Plug				PL	50cc min.	Established root; Sept to April planting; British native-origin
10.00	260	Prunella vulgaris	Plug				PL	50cc min.	Established root; Sept to April planting; British native-origin
10.00	260	Silene dioica	Plug				PL	50cc min.	Established root; Sept to April planting; British native-origin
10.00	260	Verbascum chaixii					C	0.5L	Seed propagation; full pot

Green Roof' - (UK Provenance plugs planted @ 20/m2) (85m/2)

Mix %	Qty	Name	Form	Grth (cm)	Hght (cm)	Clear Stem (cm)	Root Type	Size	Comments
20	408	Sedum acre	Plug				PL	50cc min.	Established root; Sept to April planting; UK Provenance
20	408	Sedum album 'Bella d'Inverno'	Plug				PL	50cc min.	Established root; Sept to April planting; UK Provenance
20	408	Sedum ewersie	Plug				PL	50cc min.	Established root; Sept to April planting; UK Provenance
20	408	Sedum pulchellum	Plug				PL	50cc min.	Established root; Sept to April planting; UK Provenance
20	408	Sedum sexangulare	Plug				PL	50cc min.	Established root; Sept to April planting; UK Provenance

Raised Planter - 'Ready Grown' Hedge

Abbrev.	Qty	Name	Form	Grth (cm)	Hght (cm)	Clear Stem (cm)	Root Type	Size	Comments
B sem	12	Buxus sempervirens	Hedge	7 plants per trough, 30-35cm hght			C		1m long trough; neatly clipped ready grown hedge, UK Provenance

