

NOTES

1. DX LINES - COP ITEM
2. ACOUSTIC CONSULTANT TO CONFIRM ACOUSTIC REQUIREMENTS.
3. ARCHITECT/CLIENT TO CONFIRM ROOM CONTROLLERS.
4. SUPPORTS AND FIXINGS - COP ITEM
5. UNITS TO BE STRICTLY TO MANUFACTURERS INSTALLATION GUIDELINES.
6. ALL UNITS TO BE INSTALLED WITH AN MOUNTS.
7. UNITS TO BE SUPPLIED WITH DRIP TRAYS FOR CONDENSATE COLLECTION AND CO PUMPS AS REQUIRED.
8. ALL FCU DUCT SECTIONS TO BE COMPLETE WITH VERTICAL VANES.
9. ALL GRILLES BY GILBERTS OR APPROVED.
10. ALL FCU DISCHARGE GRILLES TO BE 5° UPWARDS DEFLECTION.
11. ALL GRILLES 90x5 TBC BY ARCHITECT/INTERIOR DESIGNER OR MATCH JOINERY/WALL COLOURS AS APPLICABLE.
12. ALL VERTICAL VANES/BUFFLES TO BE PAINTED BLACK.
13. REFRIGERANT GAS SYSTEM BY AQUILAR.
14. REFRIGERANT GAS SENSORS SHOULD BE LOCATED IN THE FREE AIR, NOT OBSTRUCTED BY FURNITURE OR EQUIPMENT. THE SENSOR SHOULD BE PLACED AT A HEIGHT OF APPROXIMATELY 250mm ABOVE FINISHED FLOOR LEVEL, AS REFRIGERANT IS HEAVIER THAN AIR. THE SENSOR SHOULD BE LOCATED AS NEAR AS POSSIBLE TO THE FCU TO ENSURE A QUICK LEAK DETECTION TIME.
15. FOU UNITS TO BE CONTROLLED BY APPLE IPAD/PHONE CONTROLLERS. TBC BY CLIENT.
16. ALL AIRBRICKS TO HAVE AT LEAST A FREE AREA OF 10,000mm².
17. GAS FIRE EXTRACT FANS (GEF) SHOWN IN APPROXIMATE LOCATIONS. FINAL POSITION, NUMBERS & SIZING BY CHARLES PEARCE.
18. FRESH AIR SECTIONS OF SLOT/GRILLE TO GAS FIRE TO BE MINIMUM 100cm². TO BE LOCATED ON THE SUPPLY SLOT/GRILLE.
19. ALL DOORS TO ESCAPE ROUTES TO BE 6mm UNDERCUT. ALL DOORS FROM BEDROOMS TO ENSUITES TO BE 8mm UNDERCUT.

KEY

- TS THIMBLE SENSOR (DUAL COOLING/HEATING SENSOR WITH 2ND CABLE FOR FANCOIL SENSING)
- RG REFRIGERANT GAS SENSOR
- RC ROOM CONTROLLER (SIMPLIFIED)
- CHIMNEY TO BE USED BY ME7 SYSTEMS
- TV TILE VENT
- FB FIRE BRAKE
- FD FIRE DAMPER

TILE VENTS TO BE KLOBER UNIVERSAL 20K SLATE VENT WITH 20,000mm² FREE AREA & INSECT MESH. COLOUR/FINISH & FINAL SELECTION OF TV TBC WITH ARCHITECT.

REFER TO CHARLES PEARCE DRAWINGS FOR GAS FIRE FLUE ROUTES, GAS FIRE FLUE TERMINATIONS & GAS FIRE EXTRACT FANS.

CONE EXHAUST TO TOP OF NEW CHIMNEY STACK. FINISH FLUSH WITH TOP OF INNER STONE LEVEL.

WEATHERPROOF SEAL BETWEEN NEW FLUE & NEW CHIMNEY STACK

JOINTLESS STAINLESS STEEL FLEXIBLE FLUE LINER

EXISTING BRICK BUILT CHIMNEY STACK WITHIN LOFT SPACE

SIZE OF CHIMNEY LINER DEPENDING ON WHETHER ON BOILER, CHP OR GENERATOR. FINAL SIZING & DETAIL DESIGN BY SPECIALIST

ROOF

LINTEL OVER PENETRATION TO EXISTING CHIMNEY

FIRE SEAL AROUND FLUE PENETRATION INTO CHIMNEY STACK

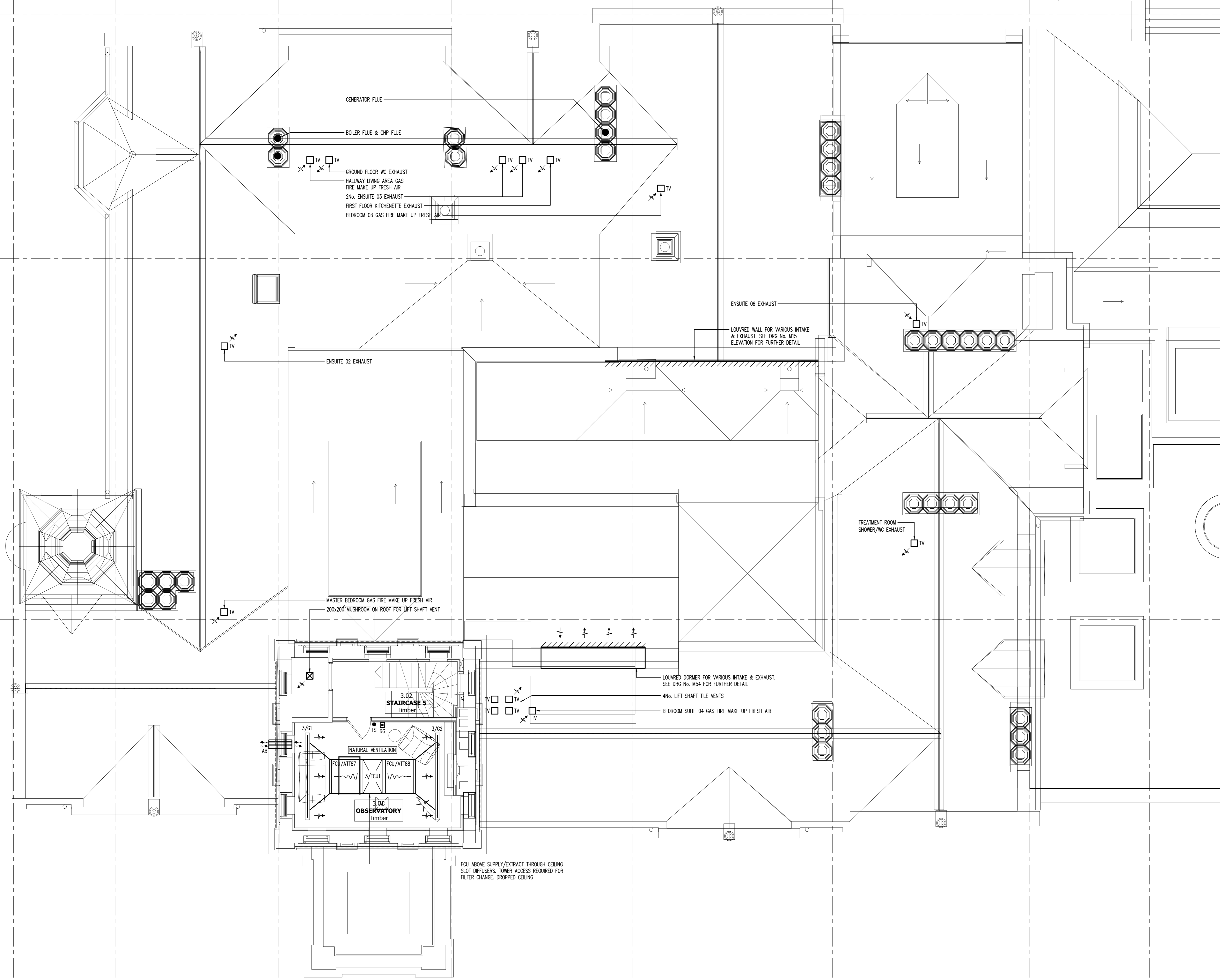
CONNECT LINER TO FLUE SYSTEM WITHIN LOFT

FIRE SEAL STACK BELOW FLUE ENTRY

FLUE TO EXISTING CHIMNEY DETAIL (1:20)

Orientation

Rev./Date	REVISIONS
P 03.04.17	PRELIMINARY ISSUE
P1 28.04.17	FOR COMMENT
P2 21.06.17	FOR COMMENT
P3 03.07.17	STAGE 3 ISSUE
T 08.12.17	STAGE 1 TENDER ISSUE
T1 21.03.18	STAGE 1 TENDER ADDENDUM
C 23.05.18	CONTRACT ISSUE



Rev./Date	REVISIONS
P 03.04.17	PRELIMINARY ISSUE
P1 28.04.17	FOR COMMENT
P2 21.06.17	FOR COMMENT
P3 03.07.17	STAGE 3 ISSUE
T 08.12.17	STAGE 1 TENDER ISSUE
T1 21.03.18	STAGE 1 TENDER ADDENDUM
C 23.05.18	CONTRACT ISSUE

ME7

ME7 Ltd.
 Jorand House, Bebington Close,
 Billericay, Essex, CM12 0DT
 Email: info@me7.eu
 Web: www.me7.eu
 Tel: +44(0)1277 353225
 M&E Consultants Energy Consultants

ace

www.aceinst.co.uk

THIRD FLOOR
 A/C & VENTILATION SERVICES

Project
**ATHLONE HOUSE
 HAMPSTEAD LANE
 HAMPSTEAD
 LONDON, N6 4RU**

Architect
 SHH Architects
 1 Vancourt Place
 Ravenscourt Park
 Hammersmith, London, W6 9NU
 +44 (0) 20 8600 4171

Scale
 AD @ 1:50
 Date
 July 2017

Drawn
 PK / CA
 Checked
 PK

Issue
CONTRACT

Project No.	Services	Draw No.	Rev.
633	M	16	C