

This drawing is © C4 Consulting and is not to be copied, reproduced or re-distributed either in whole or in part without the prior written permission of the originator.

The originator shall have no responsibility for any liability, loss, cost, damage or expense arising from or relating to any use of this document other than for its intended purpose on this project.

This drawing shall be read in conjunction with all other relevant drawings, specifications and associated documentation. Any discrepancies, errors or omissions are to be reported to the originator before proceeding with work.

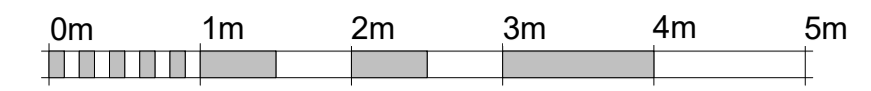
All dimensions are to be checked on site by the contractor prior to proceeding with any work. This drawing shall not be scaled to ascertain any dimensions, work to figured dimensions only.

**DISCLAIMER**  
When this drawing is issued in CAD, it is an uncontrolled version issued for information only, to enable the recipient to prepare their own documents/drawings for which they are solely responsible.

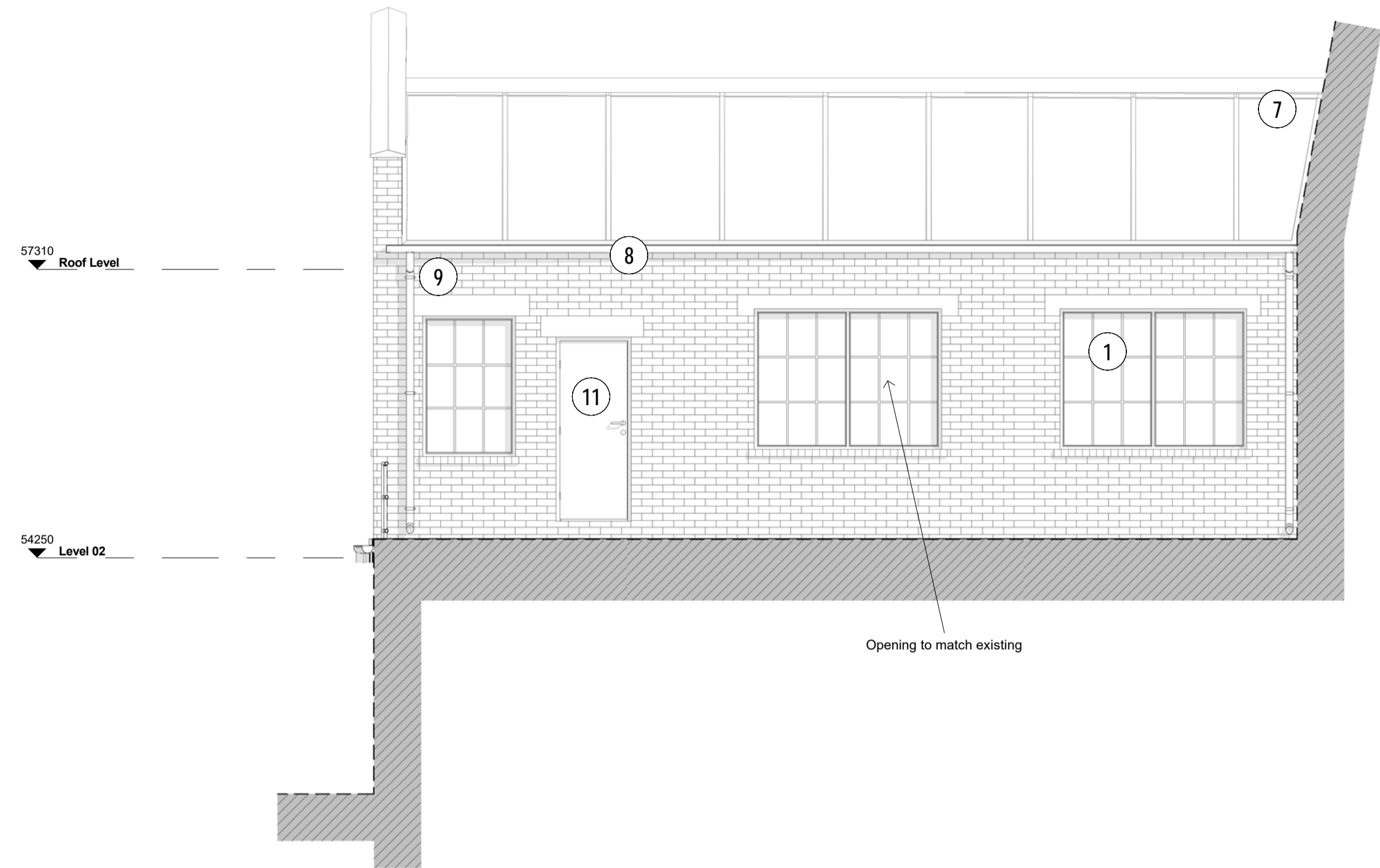
**SOFTWARE INTEROPERABILITY**  
C4 Consulting prepared this drawing using Autodesk REVIT Architecture.

C4 Consulting does not accept liability for any loss or degradation of any information held in the drawing resulting from the translation from the original file format to any other file format or from the recipient's reading of it in any other programme.

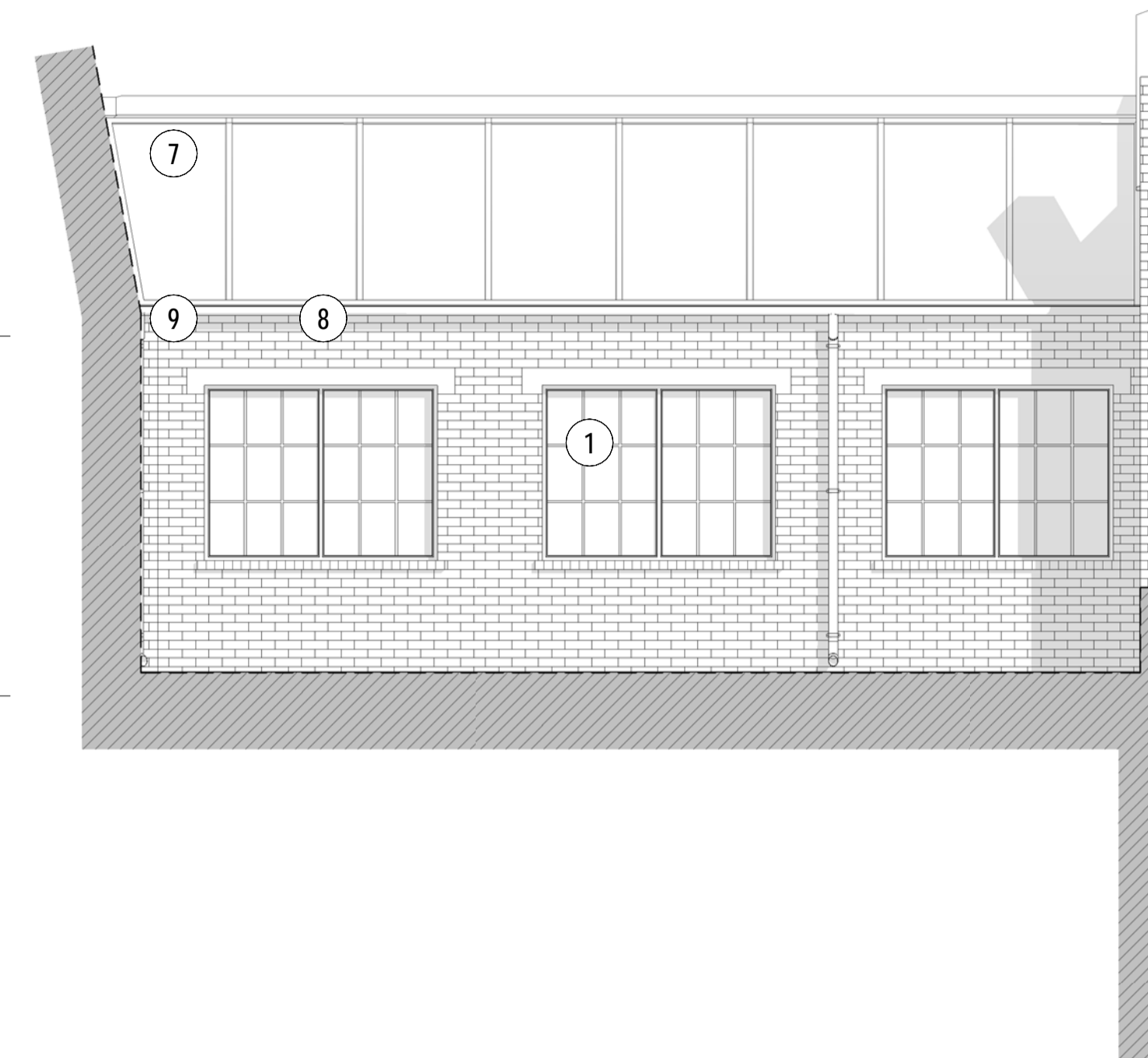
Hazard Identification		
ref	hazard	date



VISUAL SCALE 1:50 @ A1



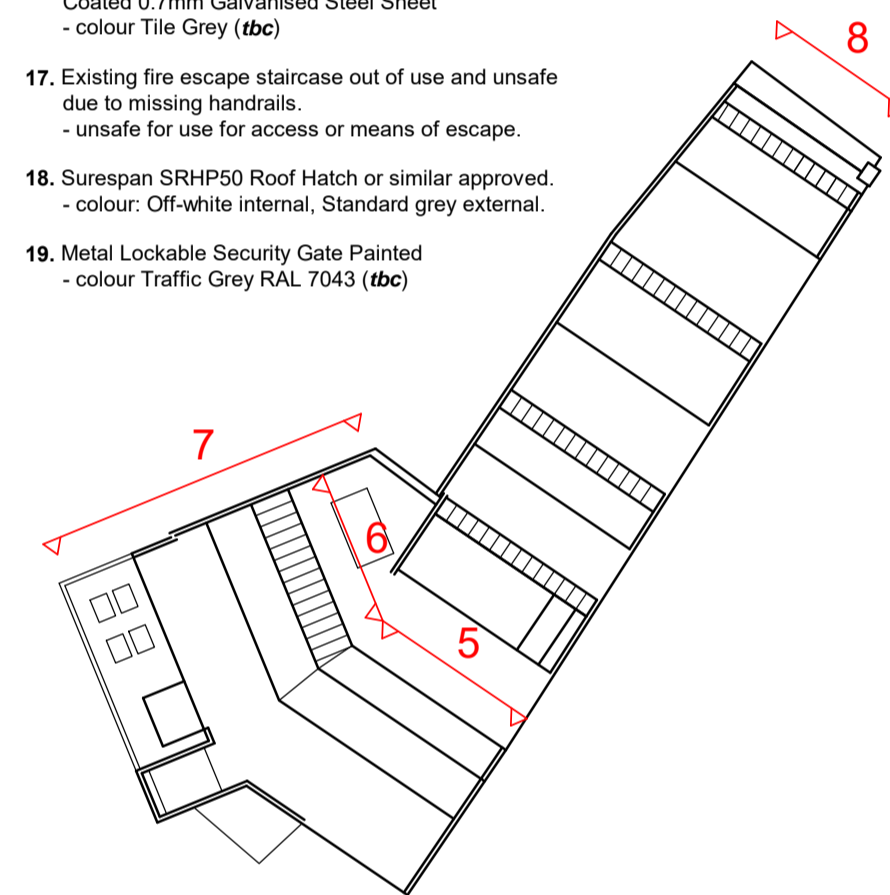
**Elevation 5 as Proposed**



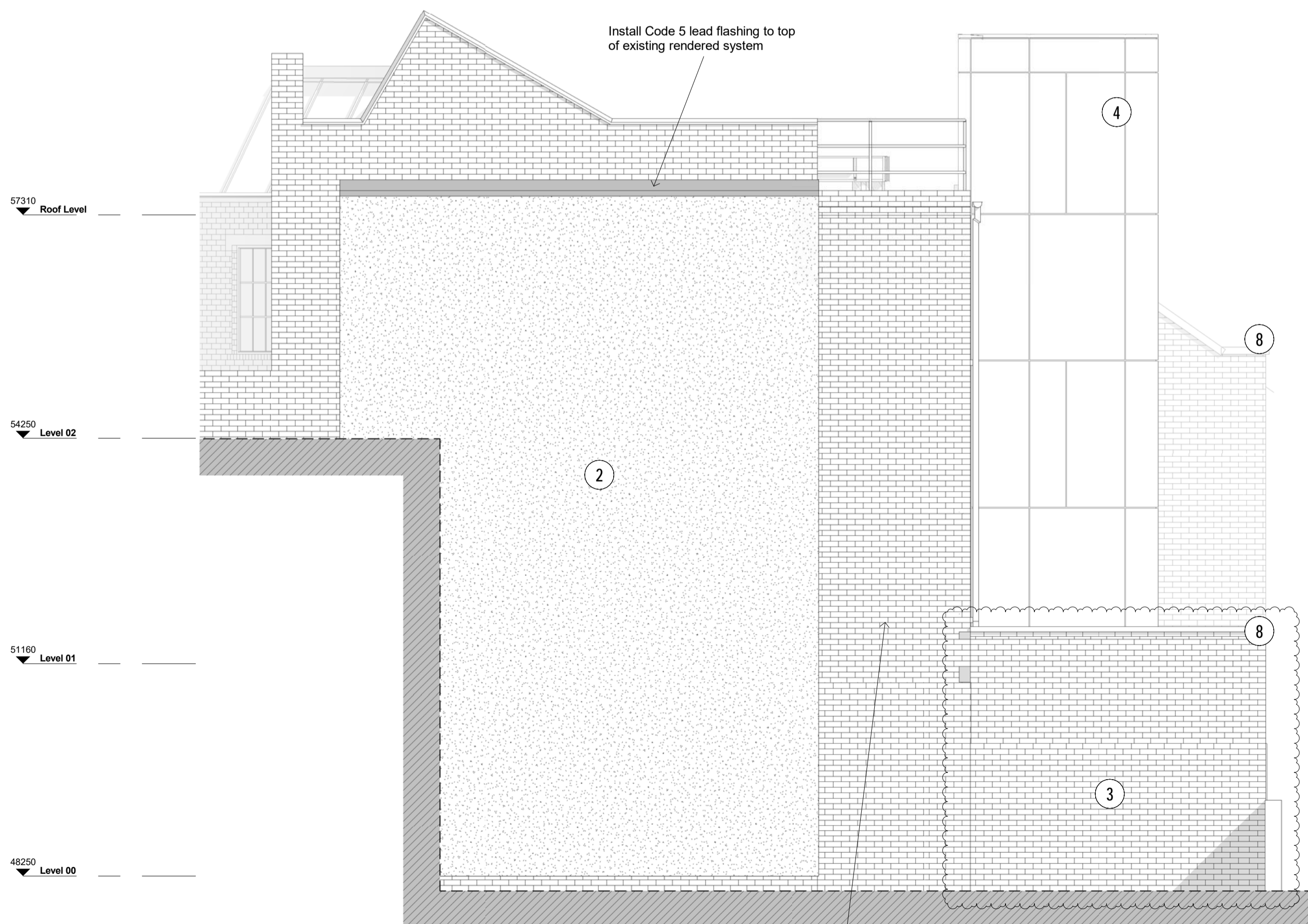
**Elevation 6 as Proposed**

**Materials Key - PROPOSED**

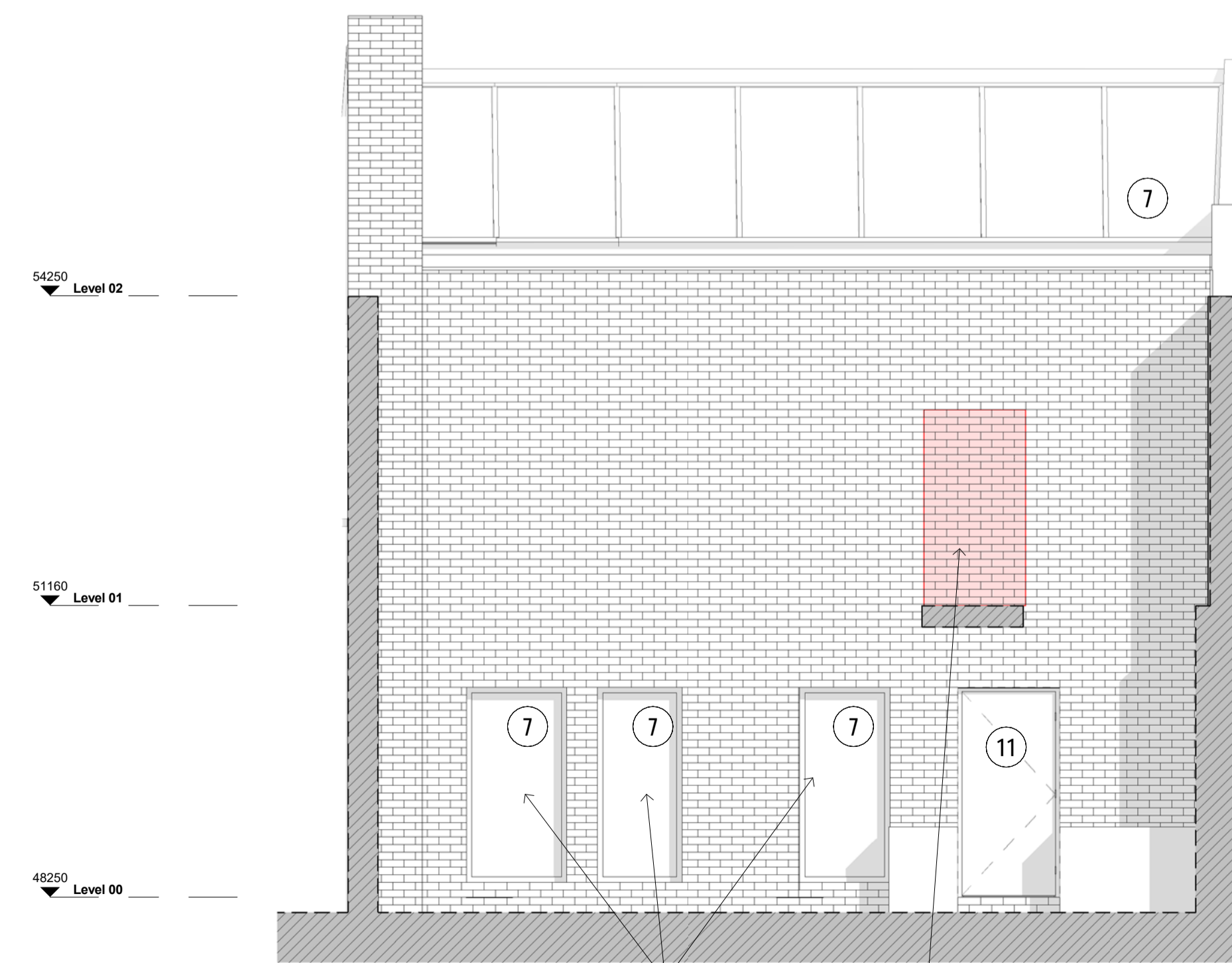
- Kawneer CT70 Slimline Aluminium Renovation Window or similar approved - colour Traffic Grey RAL 7043 (tbc)
- Existing render retained & painted Traffic Grey RAL 7043 (tbc)
- Existing structurally failing & damaged brickwork to be replaced with reclaimed brickwork from site
- Honeycomb Systems 'Metallux' Honeycomb Rainscreen Cladding Panel by Quantum Key Ltd. or similar approved - Corten Steel 'A', with exhaustiated pre-weathered finish to provide 'rust' orange colour. Sample to be approved by architect prior to manufacture.
- Reclaimed Welsh Slate Roof Tiles
- Bauder Total Roof System - Strip Roofing Felt on insulation.
- Kawneer AA100 50mm Curtain Wall System or similar approved - colour Traffic Grey RAL 7043 (tbc)
- EPPC Aluminium Fascia Boards, Copings - colour Traffic Grey RAL 7043 (tbc)
- EPPC Aluminium Rainwater Gutters and Downpipe, Soil Stacks - colour Jet Black RAL 9005 (tbc)
- Galvanised Steel Guardrail to be painted - colour Traffic Grey RAL 7043 (tbc)
- Steel Security Fire Door Set / Louver Bin Door Set - colour Traffic Grey RAL 7043 (tbc)
- 'Bespoke' Timber Door Set Painted - colour Traffic Grey RAL 7043 (tbc) External Safety Rail Bar Fixed at 1100mm (RAL 7043) - colour Water Blue RAL 5021 (tbc)
- Historic Crane Hoist to be Refurbished and Painted - colour Water Blue RAL 5021 (tbc)
- Potential signage location - material and colour (tbc)
- Existing steelwork to be cleaned, prepared and painted - colour Traffic Grey RAL 7043 (tbc). Pigeon Post and Wire Prevention Kit to be installed.
- Accord Steel Cladding - 3" Corrugated Plastisol Coated 0.7mm Galvanised Steel Sheet - colour Tile Grey (tbc)
- Existing fire escape staircase out of use and unsafe due to missing handrails. - unsafe for use for access or means of escape.
- Surespan SRHP50 Roof Hatch or similar approved. - colour: Off-white internal, Standard grey external.
- Metal Lockable Security Gate Painted - colour Traffic Grey RAL 7043 (tbc)



**Key Plan**



**Elevation 7 as Proposed**



**Elevation 8 as Proposed**

rev	revision details	by	date
G	Elevations updated following comments received from planning - specification updated	RJ	31.05.18
F	Specification updated	SW	05.03.18
E	Issued for TENDER PHASE 2	SW	23.02.18
D	Issued for APPROVAL	SW	23.02.18
C	Updated for PLANNING	SW	05.02.18
B	Updated for PLANNING	SW	16.01.18
A	Additional Notes Added	SW	10.01.18

**C4 Consulting**  
The Chapel, Old Cherry Lane, Lymm, Cheshire WA13 0TA  
T 01925 751 852  
E info@c4consulting.co.uk  
W www.c4consulting.co.uk

Project Management • Architecture • Cost Consultancy • Building Surveying

**Client**  
Industry House Developments Limited

**Project**  
Industry House  
23-25 Hampshire Street, London NW5 2TE

**Drawing Title**  
Elevations as Proposed - Sheet 3 of 3

Drawn by	S.Wardle	Date	21.12.17
Checked by	J.Pass	Date	22.12.17
Job no.	17-048	Scale	1 : 50 @ A1
Drg no.	C4C-B1-Z1-A1-20-E2-LL-203	Revision	G