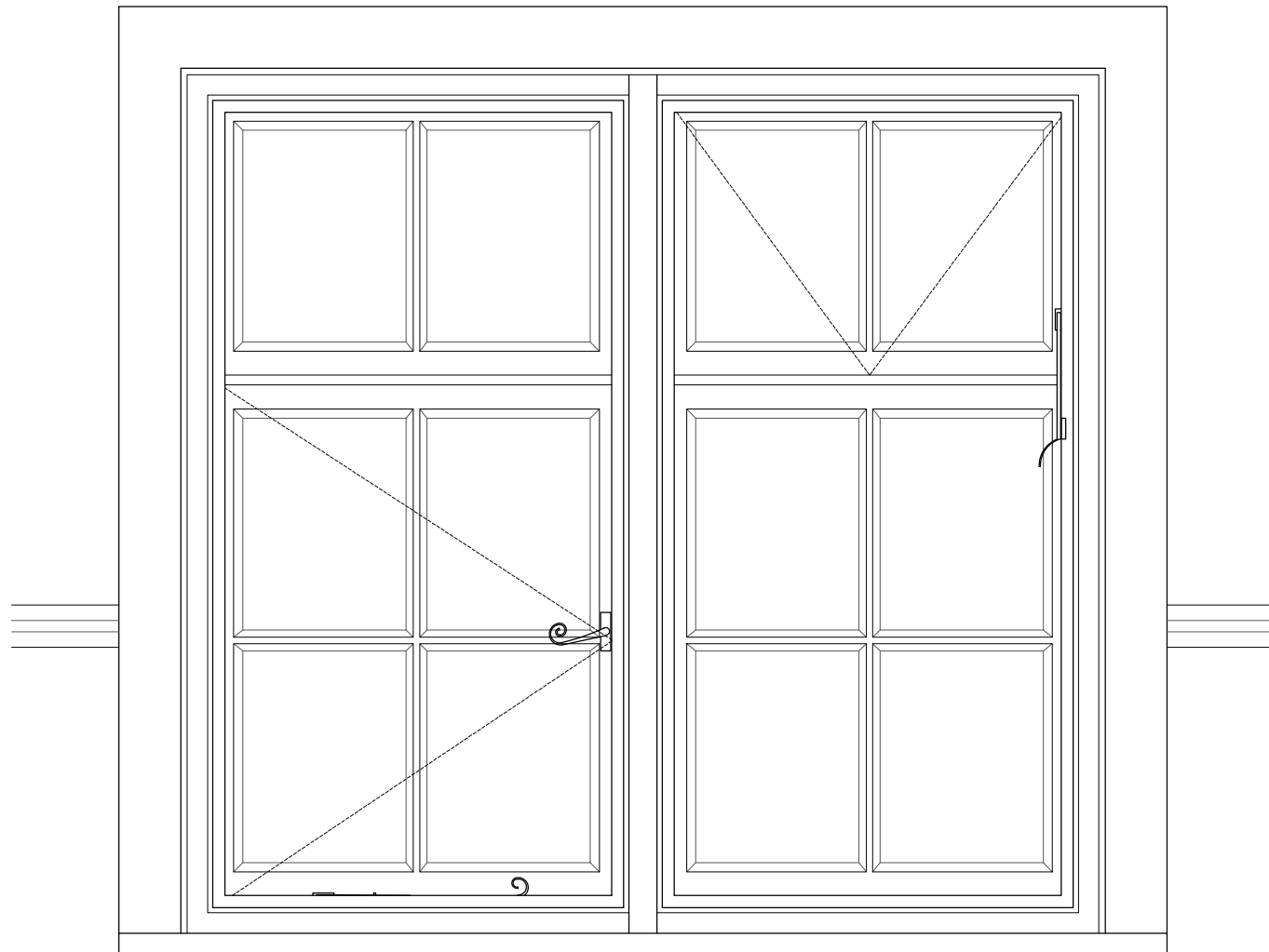


Detail Section

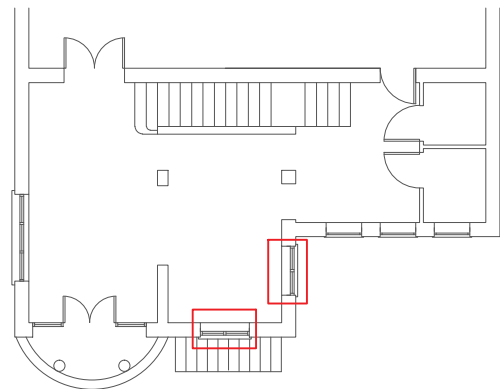


Internal Elevation

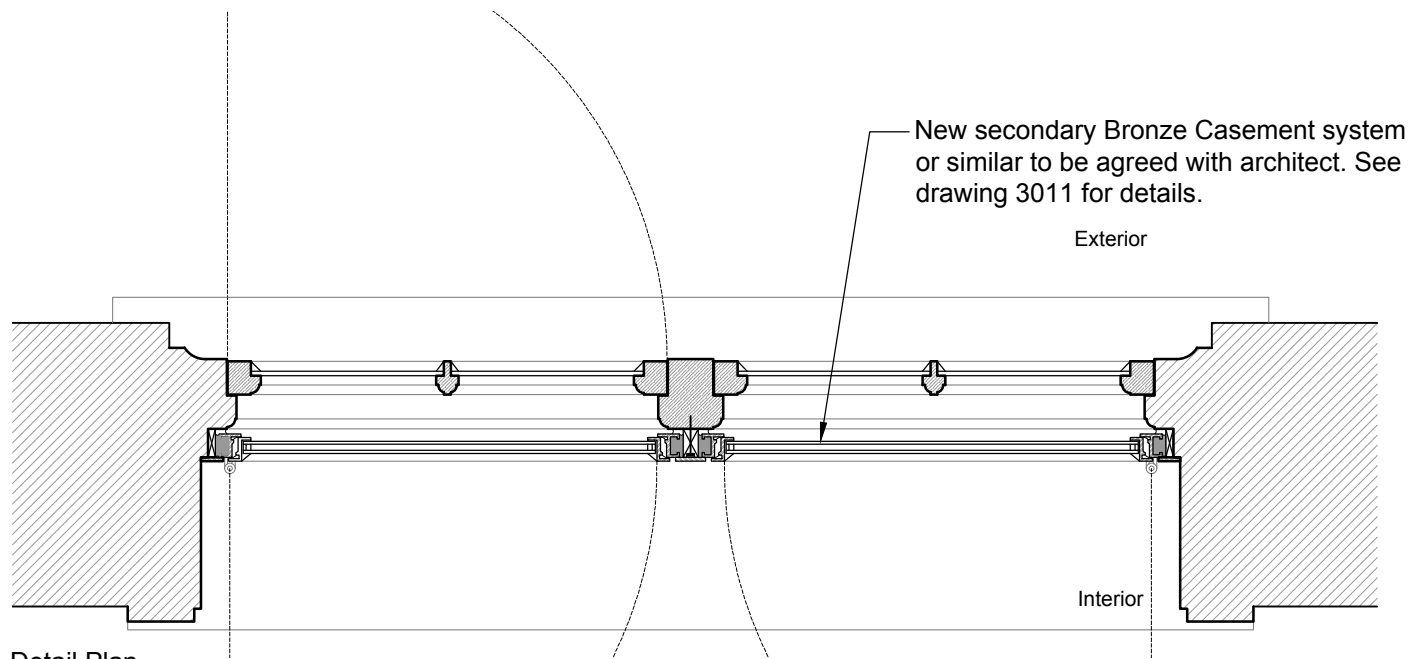
NOTES

Allow for the production of full working shop drawings to be undertaken by a specialist for the review and approval of architect.

All dimensions based on site survey and survey drawings. Structural openings to be confirmed on site by contractor.



Key Plan

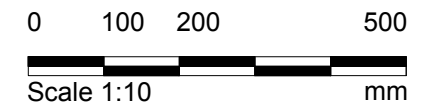


Detail Plan

New secondary Bronze Casement system or similar to be agreed with architect. See drawing 3011 for details.

Exterior

Interior



- Notes
- Any dwg format drawing is to be read in conjunction with and at the scale of the accompanying pdf.
 - Where colours other than black or grey are used, the drawing must be plotted in colour.
 - For status 'C' (Construction) drawings all dimensions are to be checked on site by the contractor, scaling is for Local Authority purposes only.
 - Unless otherwise indicated, all dimensions are in millimeters.
 - All information on this drawing is to be read in conjunction with the relevant Donald Insall Associates specification and trade contractors' drawings and information by specialists.
 - In the event of any discrepancy, please contact us immediately.
 - This drawing may contain survey information by others and is to be used solely for the purposes for which it was issued.
 - These are uncontrolled documents issued for information purposes only. If you have any queries regarding the drawings, please contact DIA immediately.
 - Please note DIA cannot be held responsible for any errors arising from changes made to an uncontrolled dwg file.

© 2017 DONALD INSALL ASSOCIATES LTD

Drawing Status	
F	Feasibility
S	Sketch Design
P	Planning
B	Building Control
D	Design Development
M	Measurement
T	Tender
C	Construction
R	Record

Rev	Date	Dwn	Auth	Revision

Rev	Date	Dwn	Auth	Revision
0	25-05-18	MXV	FM	Initial Issue

<p>Donald Insall Associates Chartered Architects and Historic Building Consultants</p>		<p>12 Devonshire Street London W1G 7AB (+44) 020 7245 9888 london@insall-architects.co.uk</p>	
<p>Quaker Meeting House, Hampstead</p>		<p>Project HPQMH.01</p>	<p>No 3010</p>
<p>Window 1.1 & 1.2 Detail As Proposed</p>		<p>Scale (A3) 1:10</p>	<p>Status P</p>
<p> </p>		<p>Revision 0</p>	<p> </p>