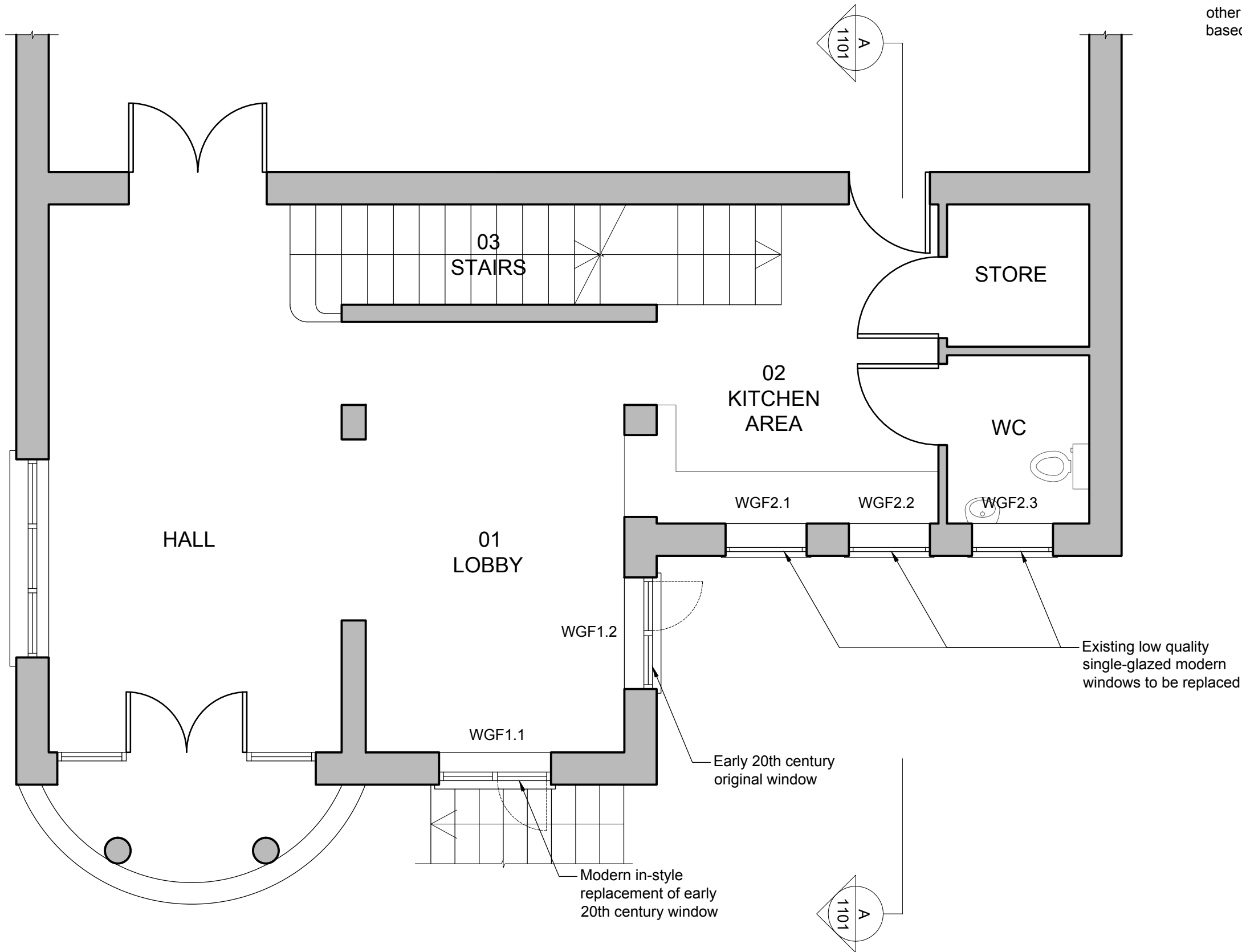


NOTES

Window dimensions taken on site by architect whereas all other elements of drawing (external walls, stairs, etc.) are based on existing sketch drawings provided by client.



Notes

- Any dwg format drawing is to be read in conjunction with and at the scale of the accompanying pdf.
- Where colours other than black or grey are used, the drawing must be plotted in colour.
- For status 'C' (Construction) drawings all dimensions are to be checked on site by the contractor, scaling is for Local Authority purposes only.
- Unless otherwise indicated, all dimensions are in millimeters.
- All information on this drawing is to be read in conjunction with the relevant Donald Insall Associates specification and trade contractors' drawings and information by specialists.
- In the event of any discrepancy, please contact us immediately.
- This drawing may contain survey information by others and is to be used solely for the purposes for which it was issued.
- These are uncontrolled documents issued for information purposes only. If you have any queries regarding the drawings, please contact DIA immediately.
- Please note DIA cannot be held responsible for any errors arising from changes made to an uncontrolled dwg file.

© 2017 DONALD INSALL ASSOCIATES LTD

Drawing Status				
F	Feasibility			
S	Sketch Design			
P	Planning			
B	Building Control			
D	Design Development			
M	Measurement			
T	Tender			
C	Construction			
R	Record			

Rev	Date	Dwn	Auth	Revision
0	25-05-18	MXV	FM	Initial Issue

Drawing Status				
F	Feasibility			
S	Sketch Design			
P	Planning			
B	Building Control			
D	Design Development			
M	Measurement			
T	Tender			
C	Construction			
R	Record			

Rev	Date	Dwn	Auth	Revision
0	25-05-18	MXV	FM	Initial Issue

Donald Insall Associates
 Chartered Architects and Historic Building Consultants

12 Devonshire Street
 London W1G 7AB
 (+44) 020 7245 9888
 london@insall-architects.co.uk

Quaker Meeting House, Hampstead

Project	HPQMH.01	No	1000
Scale (A3)	1:50	Status	P
		Revision	0

Ground Floor Plan
 As Existing