



SUMMARY OF CHEMICAL TESTS ON SOIL

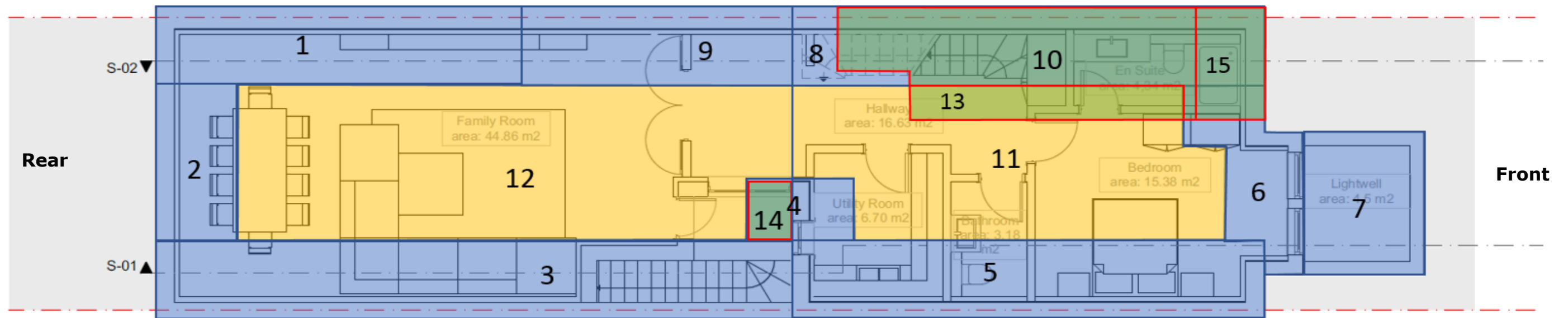
Borehole / Trial Pit	Depth m	Sample Ref	Sample Type	pH Value	Total Acid Soluble Sulphate as SO4 %	Water Soluble Sulphate as SO4 2:1 Water:Soil Extract g/l	Total Sulphur %	Water Soluble Chloride g/l	Water Soluble Nitrate g/l	Magnesium g/l	Organic Content %	Mass Loss on Ignition %	Carbonate Content %
BH1	0.50-0.60		D	7.6	0.09	0.08	0.08						
BH1	2.30-2.40		D	7.5	1.50	2.00	0.41						
BH1	3.50-3.60		D	8.0	0.29	0.96	0.09						

Tested by Chemtest Ltd : UKAS No 2183

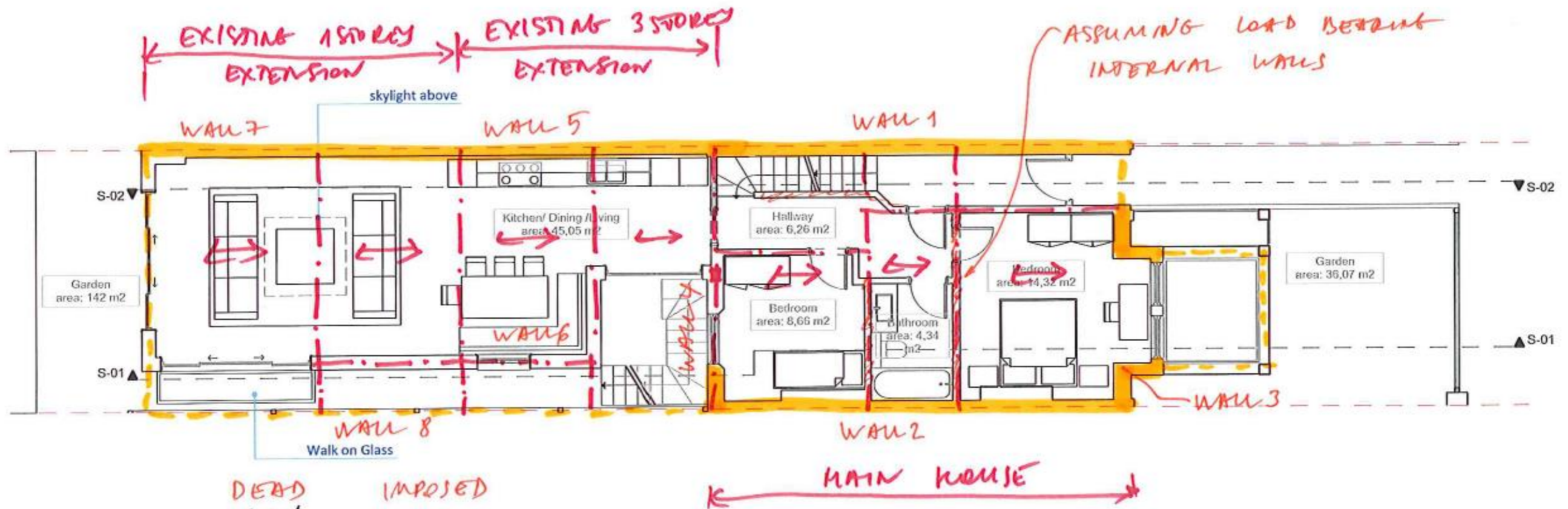
Checked and Approved by:  S Burke - Senior Technician 02/03/2018	Project Number: GEO / 27117 Project Name: 71 GOLDHURST TERRACE, LONDON, NW6 3HA GGC18672	
--	---	---

APPENDIX G

PDISP Heave/Settlement Analysis Figures



Plan taken from Opera Architects' 'Proposed Set: Basement Floor' (Drg No. 17_27//2 Rev.03)



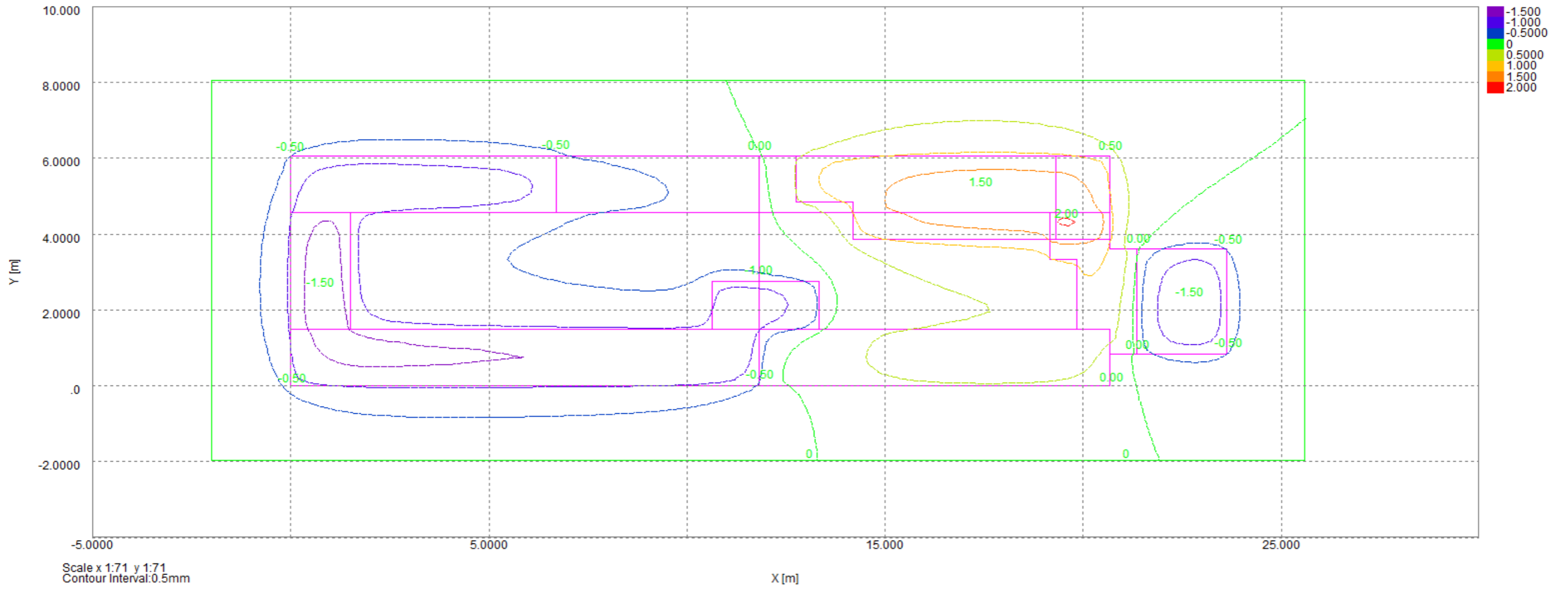
	DEAD	IMPOSED
WALL 1	60 kN/m	
WALL 2	60 kN/m	
WALL 3	54 kN/m	14 kN/m
WALL 4	ASSUME UNDERPINNED. SEE LOADS FOR WALL 3	
WALL 5	50 kN/m	16 kN/m
WALL 6		
WALL 7	25 kN/m	12 kN/m
WALL 8	16 kN/m	6 kN/m

LOAD TAKE DOWN

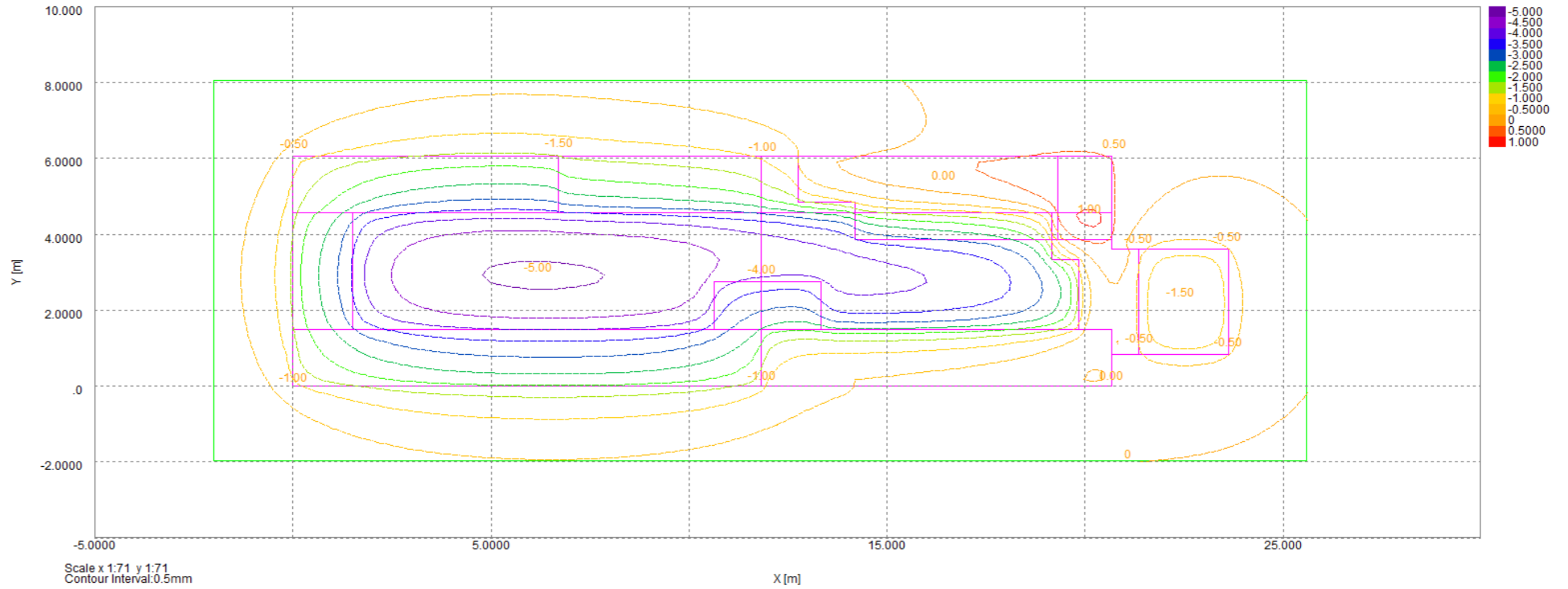


Plan taken from Green Structural Engineering's 'Proposed Set: Ground Floor Load Takedown' (Drg No. 17_27_PR_1)

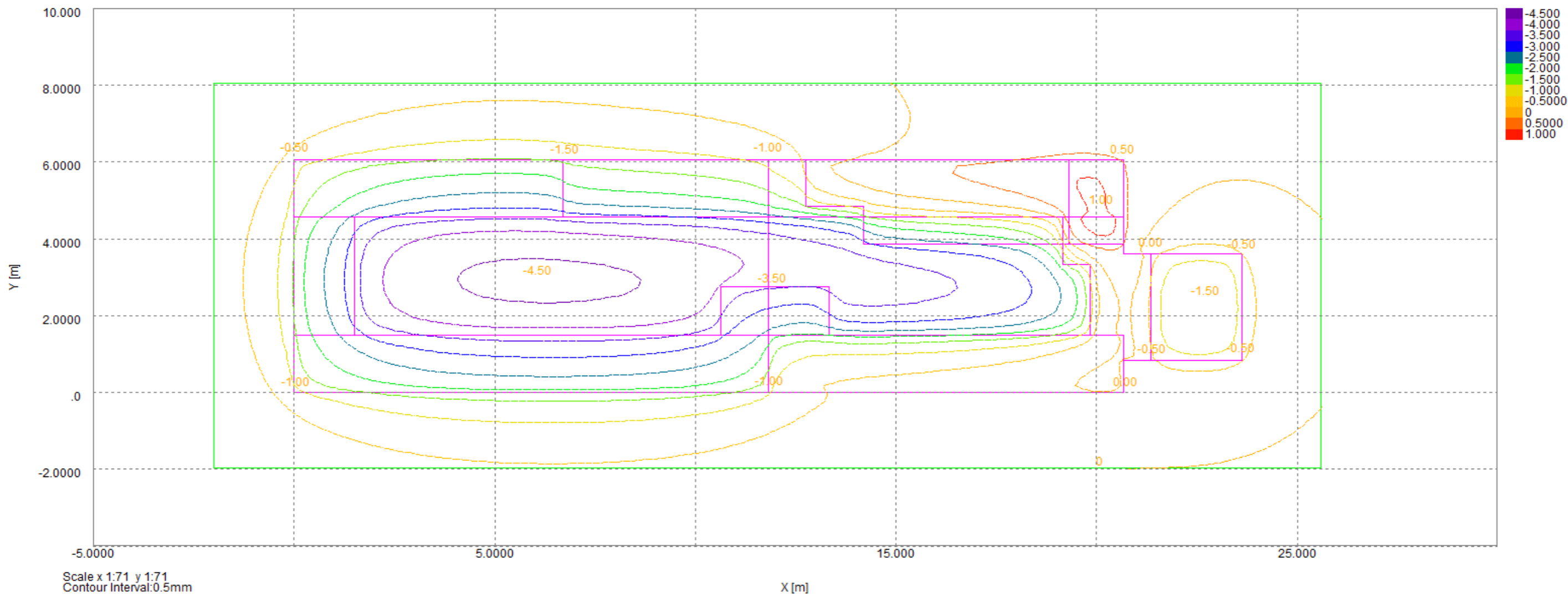
Settlement Contours : Grid 1 at -3.6000m



Settlement Contours : Grid 1 at -3.6000m



Settlement Contours : Grid 1 at -3.6000m



Settlement Contours : Grid 1 at -3.6000m

