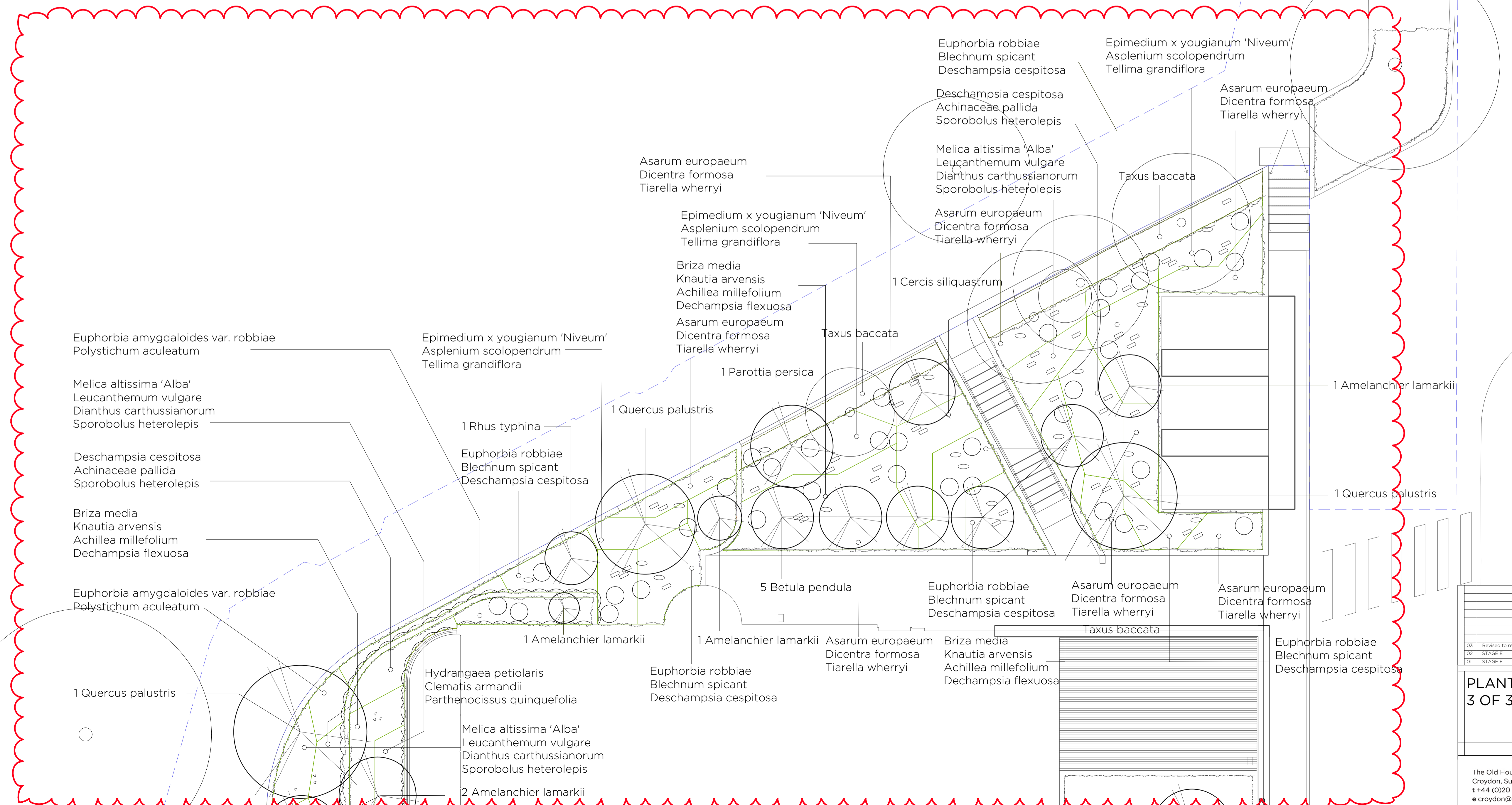


Planting plan revised in accordance with changes discharged under Non Material Amendments application
Reference: 2017/4229/P



KEY
Single Species with Planting Mixes

- Existing trees
- Proposed trees
- Climbing plants
- Prunus laurocerasus 'Otto Luykens'
- Luzula nivea
- Polystichum aculeatum
- Penstemon coccineus
- Anthriscus sylvestris
- Rudbeckia fulgida 'Goldsturm'
- Digitalis 'Alba'
- Wildflower turf (to follow)

All planting mixes to be equally divided in proportions and quantities.
All herbaceous to be planted at a density of 4 per square meter.
Climbers to be planted at 750mm centers.

NOT FOR ISSUE

General notes:			
1. This drawing is to be read in conjunction with other C&M landscape drawings and specifications.			
2. Any discrepancies between sources of information should be immediately notified to the Landscape Architect for clarification.			
3. Do not scale off this drawing.			
4. All dimensions in mm unless otherwise stated.			
03	Revised to reflect changes to layout	24.10.17	BK
02	STAGE E	01.09.15	MS
01	STAGE E	16.01.15	MS

PLANTING PLAN 3 OF 3	ROYAL FREE PEARS BUILDING	1:100 @ A1	1372-PP-303-03
		30.03.2016	
		CP	