

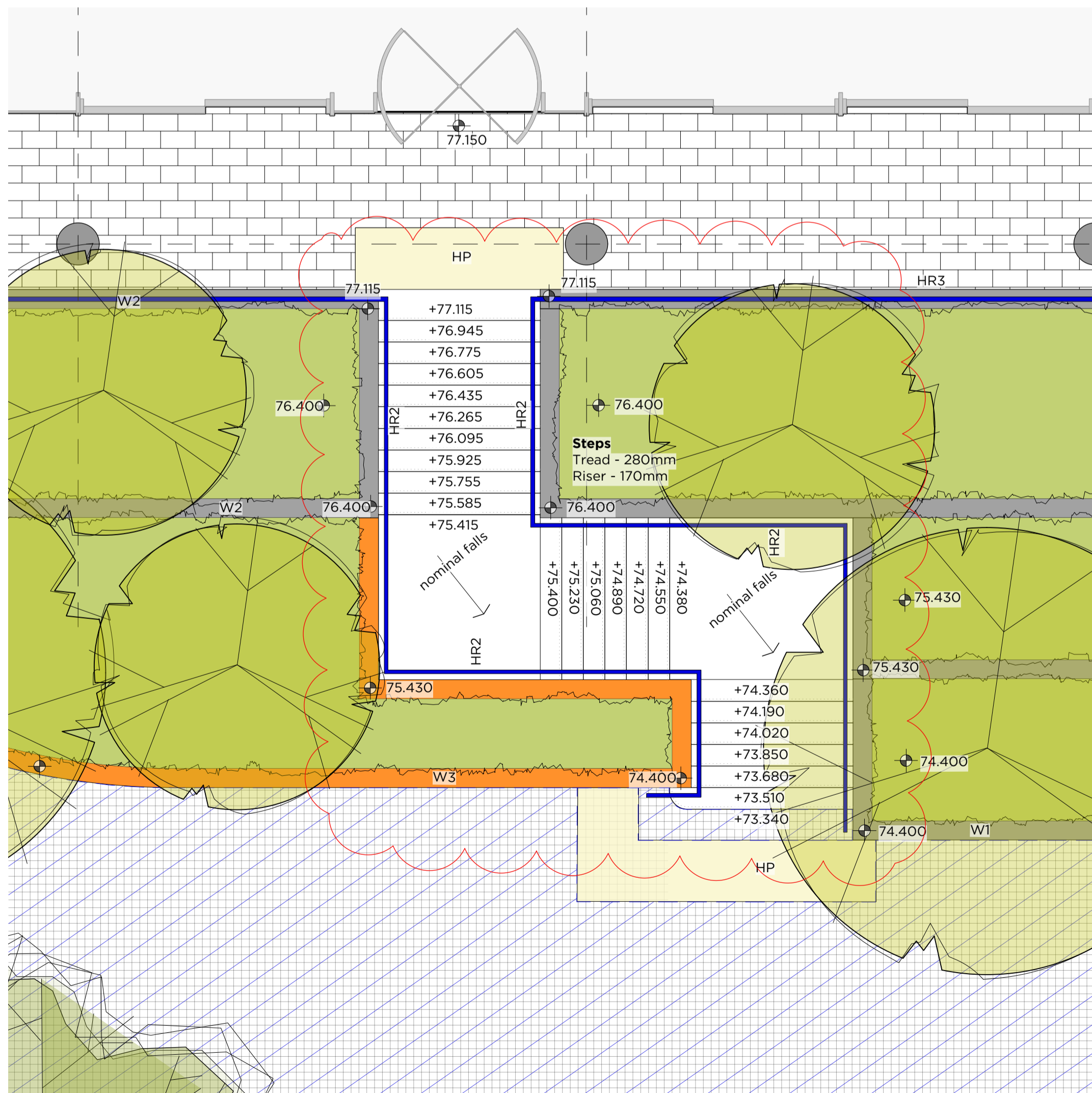
Note: Entrance steps and surrounding terraces / retaining walls and landscaping have been revised in accordance with Non Material Amendments application / Reference: 2017/4229/P

Plan scale 1:100

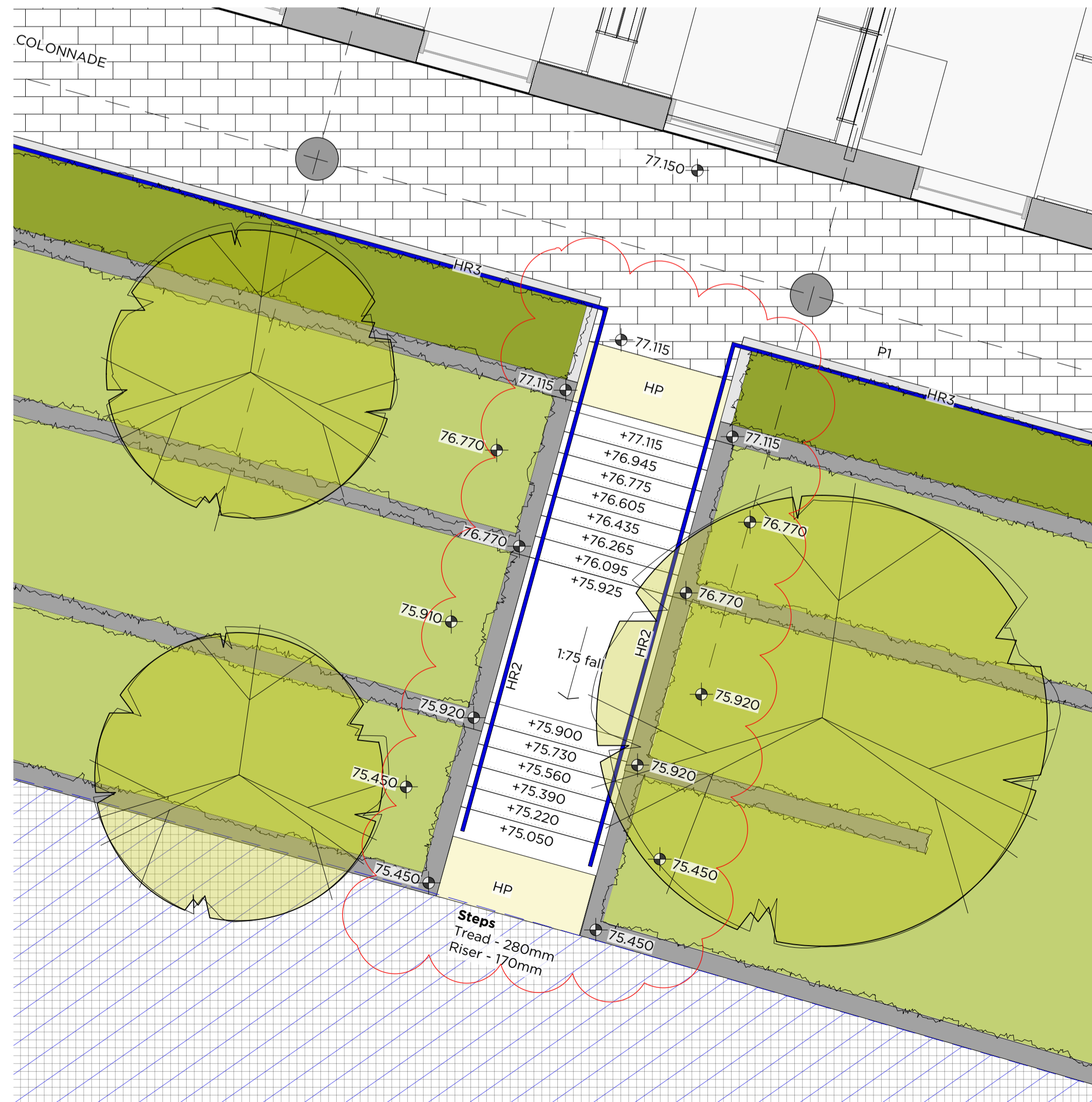
- Site Boundary**
- Surfaces
 - P1 Scoutmoor Yorkstone Paving. Diamond sawn finish 600 W x 400-900 L x 80mm. Refer to Q25/110J
 - P2 600 X 200 Marsalls Celestia Concrete Flags. Refer to Q25/120
 - P3 Concrete Setts 'Tegula'. Traditional color. 240 x 160x 80 mm. Refer to Q25/120 and Q25/317J
 - P4 Concrete Setts 'Tegula'. Traditional color. 240 x 160x 80 mm. Refer to Q25/120 and Q25/316J
 - P5 Granite Setts to Rowland Hill Street 240 x 160 x 100 mm Refer to Q25/115 J
 - P6 In-situ concrete Refer to Engineer's specification
 - P7 Existing surface and kerbs to be retained. Work by LBC
 - HP Hazard Warning Corduroy paving Refer to Q25/320 J
 - GK Granite Kerb. Refer to Q25/120 J
 - FK Flush Kerb. Refer to Q25/121 J
 - PK Pin Kerb Refer to Q25/122 J
 - Hard Timber Decking Refer to Q55/110
 - Planting
 - Proposed Tree Planting
 - Existing trees to be retained. Trees to be protected according to BS5837 during construction
 - Shrub Planting
 - Lawn
 - Hedge

- Furniture**
- Proposed memorial benches. Refer to Q50/220
 - Hedge Planters 1000x500x500mm
 - Tree Planter 1800x1800x700mm
 - Litter bin. Refer to Q50/240J
 - Handrail type 1- Fixed to the wall. Refer to Architects specification
 - Handrail type 2 with incorporated lighting Refer to Architects specification
 - Handrail type 3 Floor Mounted No lighting Refer to Architects specification
 - General
 - Bespoke "in-situ" concrete retaining wall 250mm wide to vary heights Refer to Engineers details
 - Brick wall Refer to Engineers details
 - Low kerb 250x150mm kerb laid on side in accordance to Engineers details
 - Stainless Steel Bollards with concrete footings

08	Revised layout. Lighting omitted.	06.10.17	KI	General notes:
07	Drawing updates	25.07.16	MS	1. This drawing is to be read in conjunction with other C&M landscape drawings and specifications.
06	Further Hopkins Comments added	18.07.16	MS	2. Any discrepancies between sources of information should be immediately notified to the Landscape Architect for clarification.
05	Revised following Hopkins	05.05.16	CP	3. Do not scale off this drawing.
04	Revised Layout for Planning	25.04.16	CP	4. All dimensions in mm unless otherwise stated.
03	Revised Layout	23.03.16	CP	
02	Revised Layout	10.03.16	CP	
01	Revised Layout	26.02.16	CP	



area A scale 1:50



area B scale 1:50

ENTRANCE STEPS	ROYAL FREE PEARS BUILDING
PLANNING	1372-GA-104-08